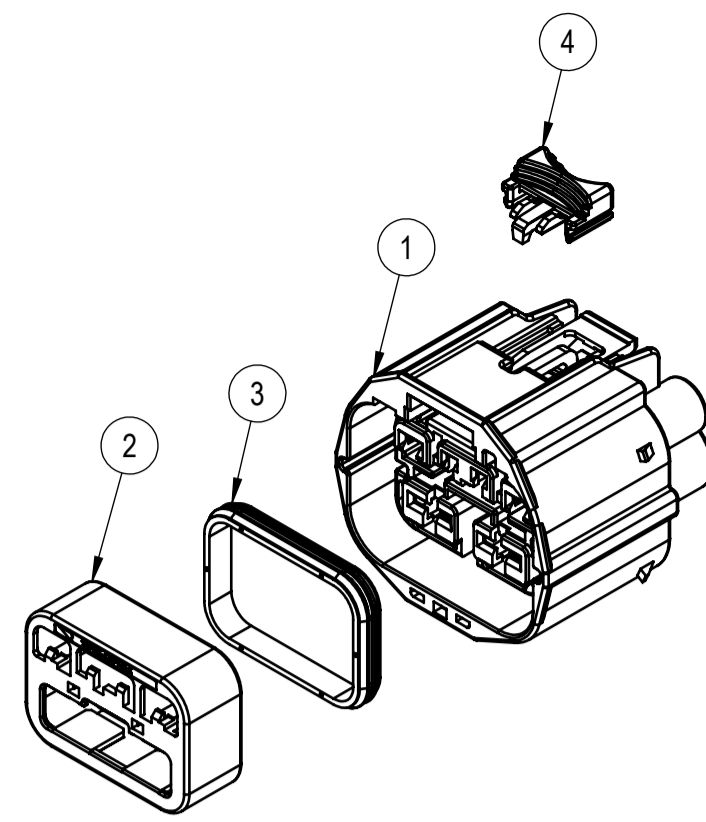
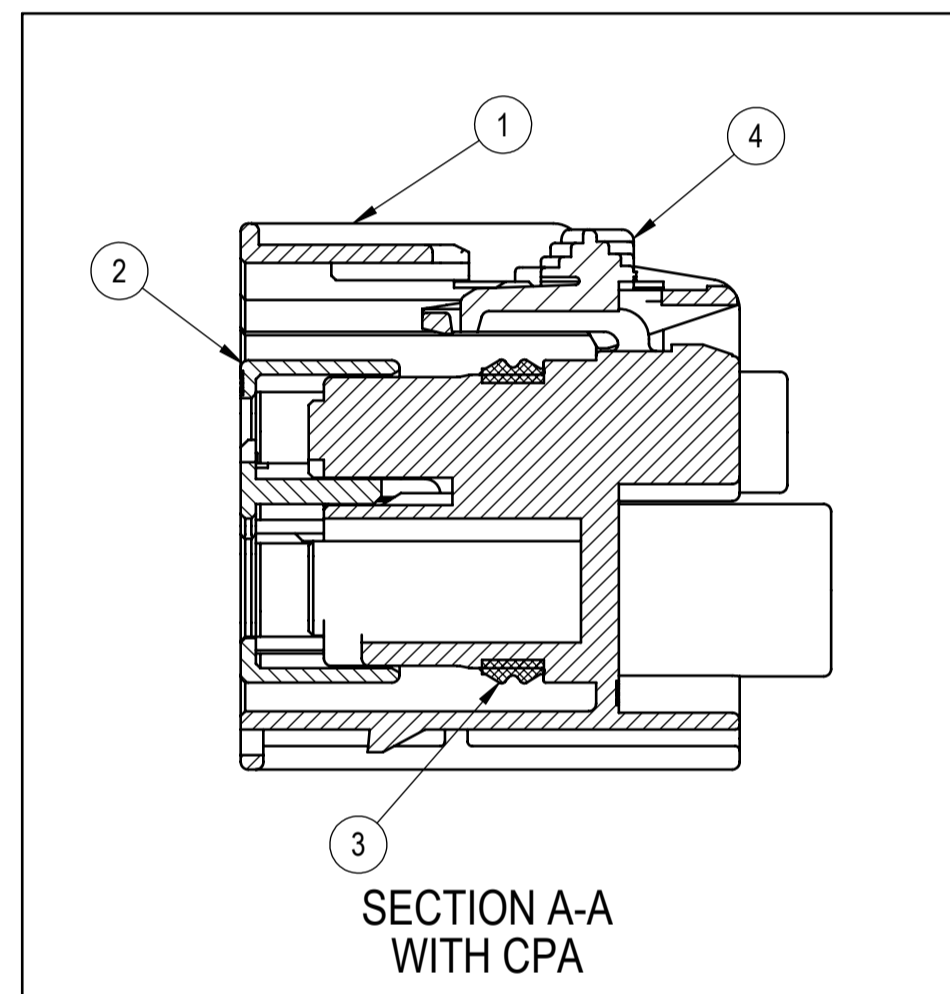
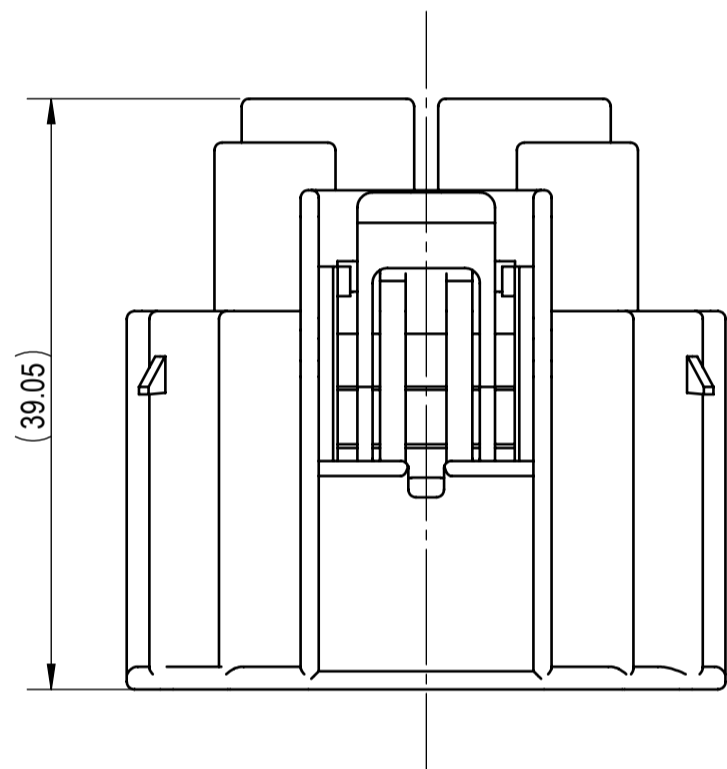


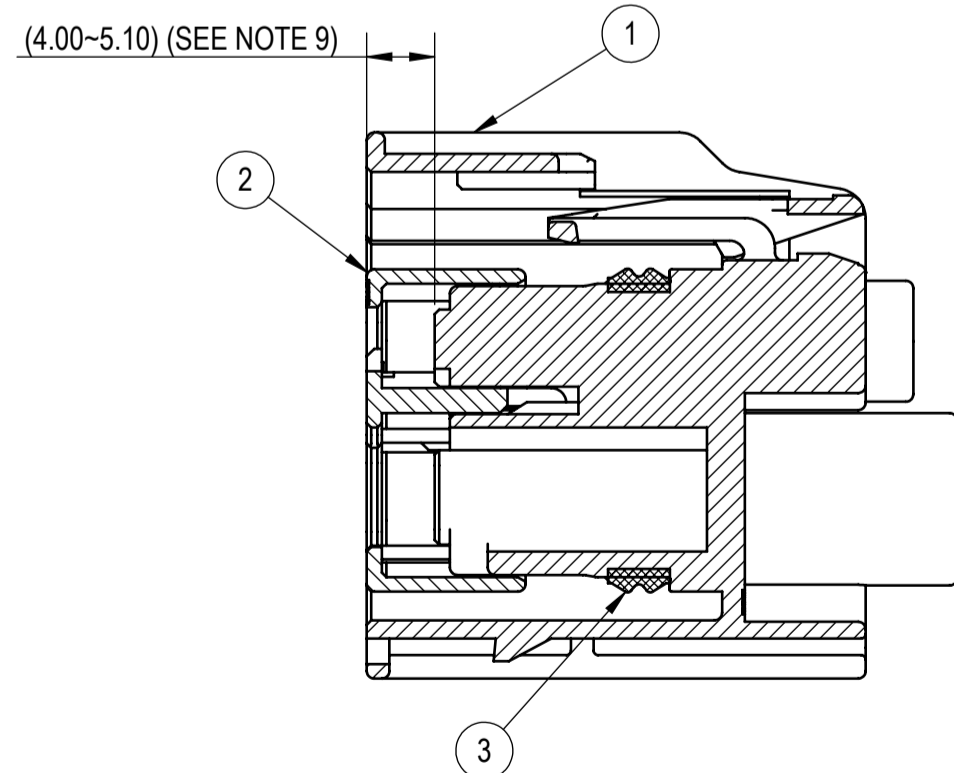
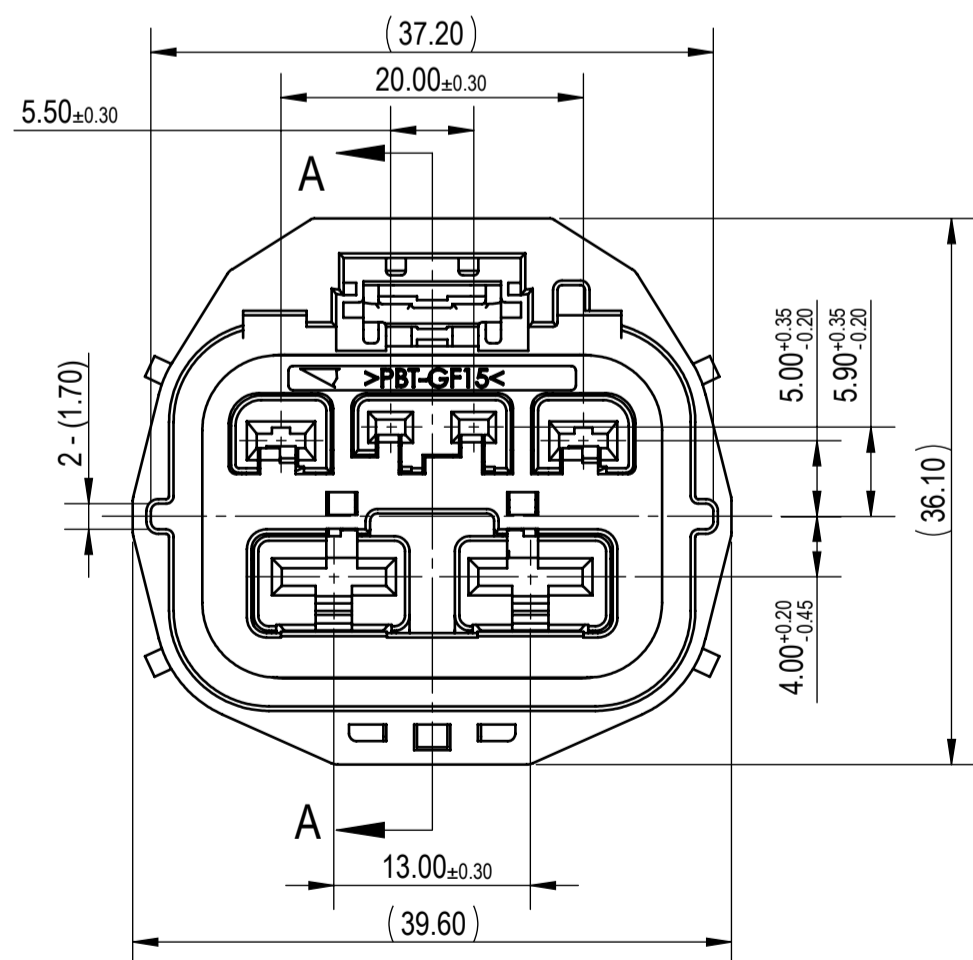
7289-9093-30, ETC.
KEYWAY A



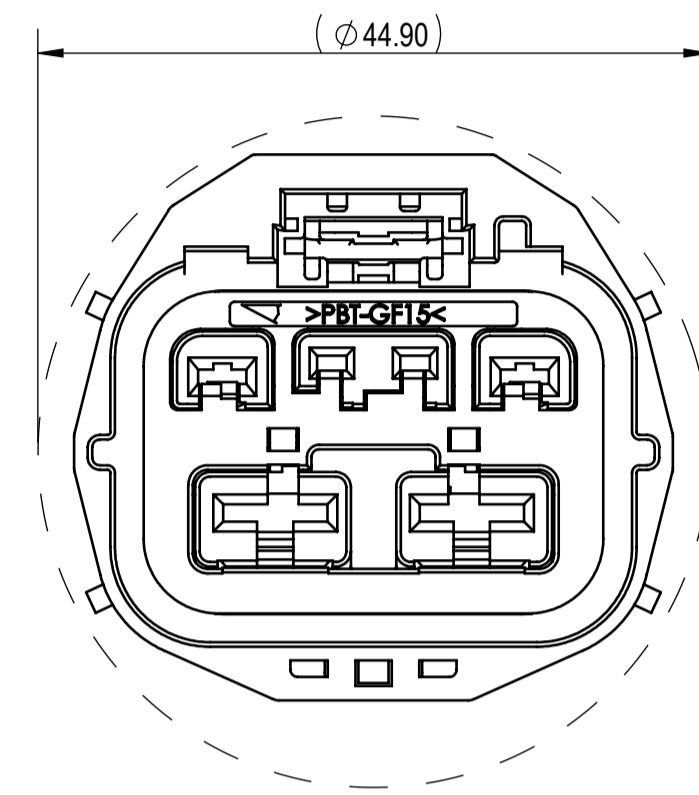
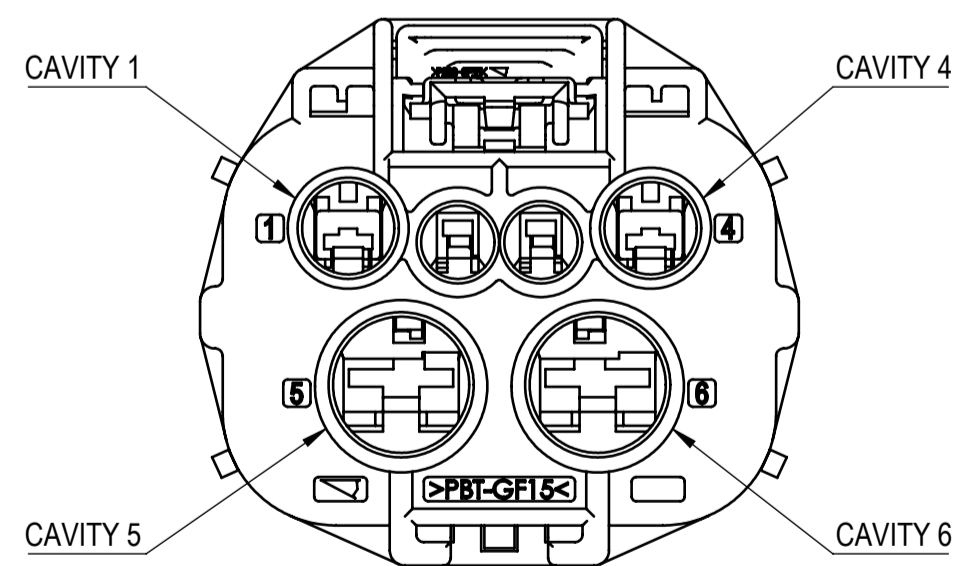
EXPLODED VIEW
(1/1)



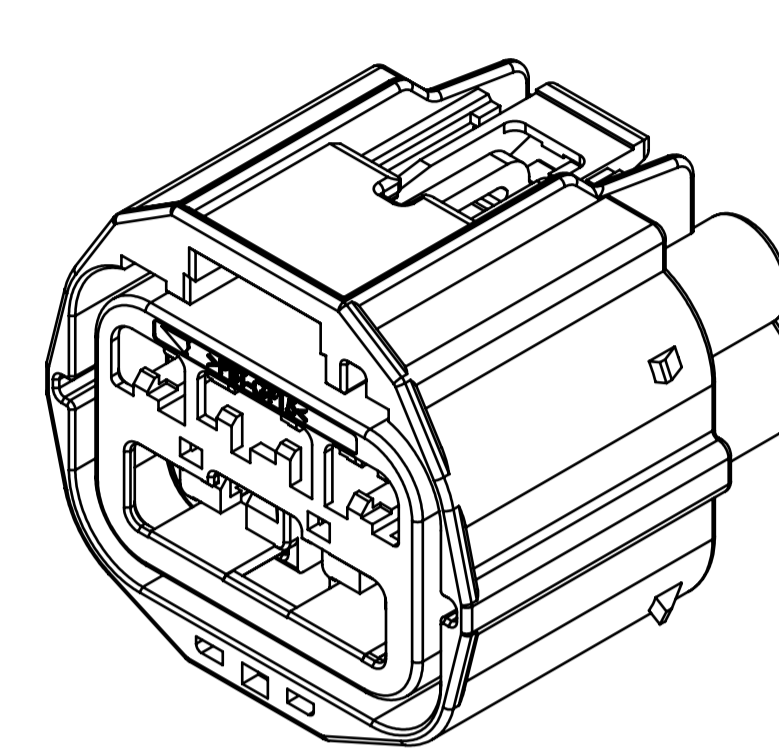
SECTION A-A
WITH CPA



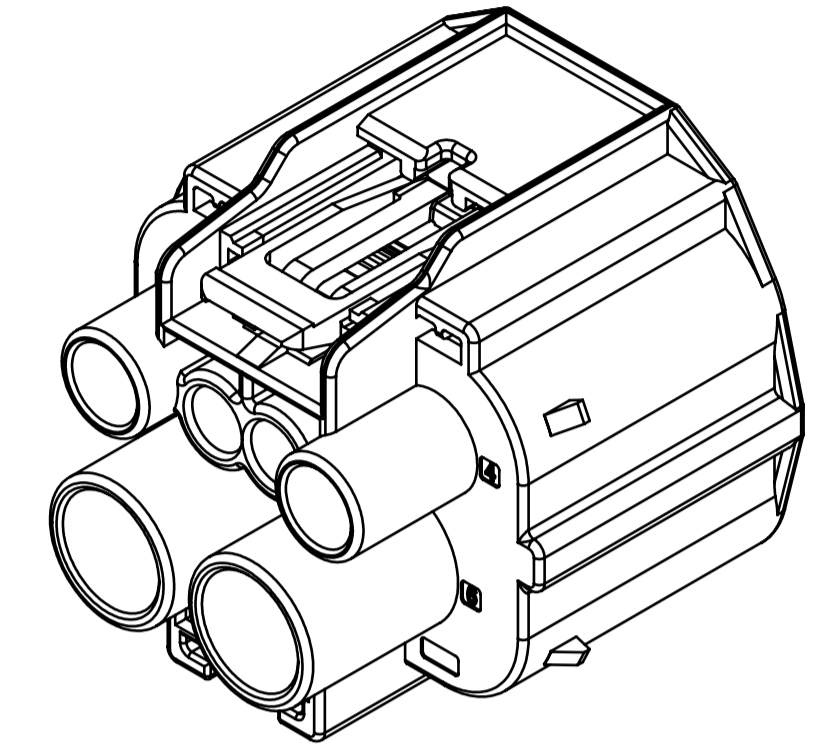
SECTION A-A



RECOMMENDED PASS-THROUGH
HOLE DIMENSION
(1mm CLEARANCE ALL AROUND)
(2/1)



FRONT ISOMETRIC VIEW
(2/1)



REAR ISOMETRIC VIEW
(2/1)

SUB-ASSEMBLY PART NUMBER	NO.	PART NUMBER	PART NAME	MATERIAL	COLOR	QUANTITY	MASS (g)
7289-9093-30	①	7189-9093-30	6P (2Px1.5mm + 2Px2.8mm + 2Px6.3mm) YESC SEALED FEMALE CONNECTOR HOUSING	PBT-GF15	BLACK	1	(21.65)
	②	7172-1494	6P (2Px1.5mm + 2Px2.8mm + 2Px6.3mm) YESC SEALED FEMALE CONNECTOR TPA	PBT-GF15	NATURAL	1	
	③	7137-3130-50	6P (2Px1.5mm + 2Px2.8mm + 2Px6.3mm) YESC SEALED FEMALE CONNECTOR INTERFACE SEAL	SILICONE	RED	1	
7289-9146-30	①	7189-9093-30	6P (2Px1.5mm + 2Px2.8mm + 2Px6.3mm) YESC SEALED FEMALE CONNECTOR HOUSING	PBT-GF15	BLACK	1	(22.08)
	②	7172-1494	6P (2Px1.5mm + 2Px2.8mm + 2Px6.3mm) YESC SEALED FEMALE CONNECTOR TPA	PBT-GF15	NATURAL	1	
	③	7137-3130-50	6P (2Px1.5mm + 2Px2.8mm + 2Px6.3mm) YESC SEALED FEMALE CONNECTOR INTERFACE SEAL	SILICONE	RED	1	
	④	7172-1065-50	YESC SEALED FEMALE CONNECTOR CPA	PA66-GF35	RED	1	

NOTES:

- PARTS MUST BE PURCHASED FROM YAZAKI.
- PARTS MUST BE FREE OF FLASH AND IMPERFECTIONS THAT AFFECT FUNCTION.
- APPLICABLE TERMINAL: SEE 7116-4102-02:R DRAWING (1.5 YESC SEALED TERMINAL)
MAX WIRE OD: 2.70mm (APPLICABLE CAVITIES: 2,3)
MIN WIRE OD: 1.20mm (APPLICABLE CAVITIES: 2,3)
7116-4150-02:R DRAWING (2.8 YESC SEALED TERMINAL)
MAX WIRE OD: 3.80mm (APPLICABLE CAVITIES: 1,4)
MIN WIRE OD: 1.20mm (APPLICABLE CAVITIES: 1,4)
7116-4140-02:R DRAWING (6.3 YESC SEALED TERMINAL)
MAX WIRE OD: 4.30mm (APPLICABLE CAVITIES: 5,6)
MIN WIRE OD: 1.40mm (APPLICABLE CAVITIES: 5,6)
- APPLICABLE WIRE SEAL: SEE 7158-3030-50:R DRAWING (1.5 YESC)
7158-3111-60:R DRAWING (2.8 YESC)
7158-3081-50:R DRAWING (6.3 YESC)
7158-3084-40:RA DRAWING (6.3 YESC SEALED TERMINAL-10AWG)
- APPLICABLE CAVITY PLUG: SEE 7158-3032-60:R DRAWING (1.5 YESC)
7158-3114-90:R DRAWING (2.8 YESC)
7158-3080-60:R DRAWING (6.3 YESC)
- MATING PART NUMBER: 7288-9094-30
- PART SATISFIES USCAR 2, REVISION 6, FEBRUARY 2013, (T3/V2/S3/MF3)
- PART TO COMPLY WITH YPES-31-038 REQUIREMENTS.
- THIS DIMENSION SHOWS THE PRE-SET POSITION OF THE TPA.
- THIS DRAWING IS TO BE USED FOR INTERNAL YAZAKI PSW SUBMISSION.
- CLIP SLOT: 11mm CLIP SLOT. (BASED ON USCAR 11mm CLIP SLOT, EWCAP-005-11, REV C)
- HANDLING MANUAL NUMBER: YPES-15-298E (1.5), YPES-15-299E (2.8), YPES-15-300E (6.3)
- CONNECTOR IS CAPABLE OF ACCEPTING A DRESS COVER.

DATE	REVISION RECORD	NO.	CHKD
04-14-2022	REMOVED TEST FAILURE	C22-A198	F.R.
08-24-2018	NEW	C18-A787	S.A.

GENERAL TOLERANCE											
	10MAX	50MAX	100MAX	250MAX	250OVR	R5 MAX	R10 MAX	R20 MAX	R20 OVR	ANGLE	ECCENT
A	±0.15	±0.20	±0.30	±0.50	±0.75	±0.20	±0.30	±0.50	±2.50	±3°	0.1
B	±0.20	±0.30	±0.55	±0.95	±1.40	±0.20	±0.30	±0.50	±2.50	±3°	0.1
C	±0.30	±0.50	±0.80	±1.40	±2.00	±0.20	±0.30	±0.50	±2.50	±3°	0.15
MASS	SEE TABLE										

CUSTOMER		MATERIAL		TREAT.	
CUSTOMER PART NO.	CUSTOMER DWG NO.	SPEC.	SEE TABLE	& FIN.	N/A
YNA	TRIAL PART NO.	NAME 6P (2Px1.5mm + 2Px2.8mm + 2Px6.3mm) YESC SEALED FEMALE CONNECTOR SUB-ASSEMBLY			
VENDOR		PART NO.		7289-9093-30, ETC.	
VENDOR NO.		CH. CODE		7289-9093-30:R	
DWG TYPE		DWG SOURCE		DWG NO.	
R	7289-9093-30:M	DWG DATE		08-24-2018	
APPROVED	CHECKED	CHECKED	DESIGN	DRAWN	
VENDOR NO.		DESIGN		DRAWN	
VENDOR NO.		ADRIAN WARGA KANE		FERNANDA RASCONA	
VENDOR NO.		01-10-2017		04-14-2022	
YAZAKI CORPORATION					