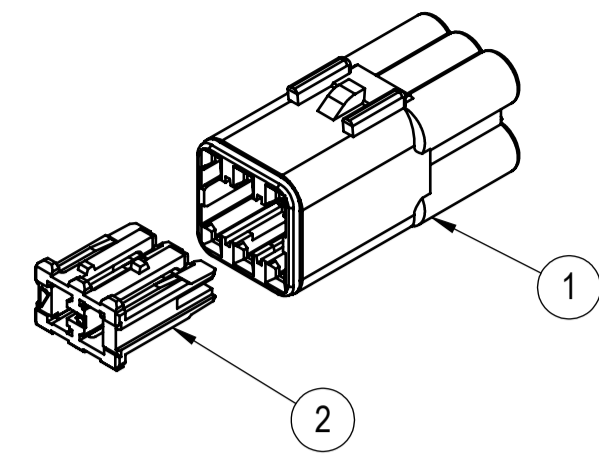
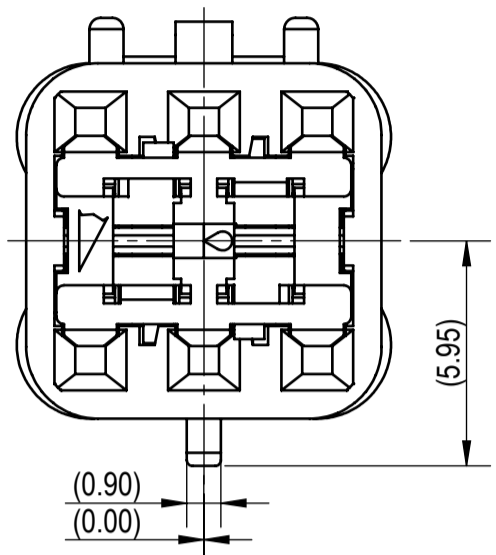


7289-8958-30, ETC.
KEYWAY A

(5/1)

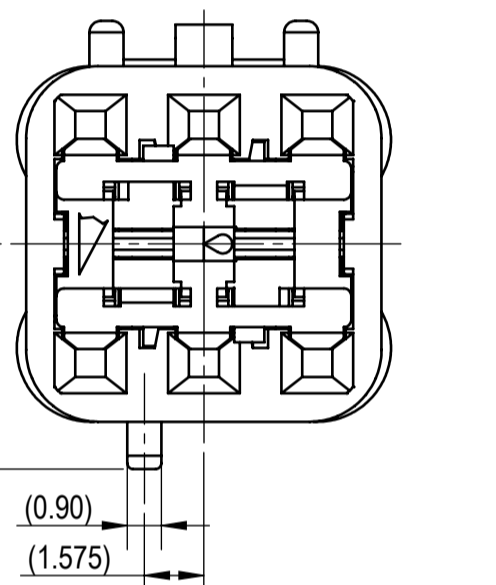


EXPLODED VIEW
(2/1)



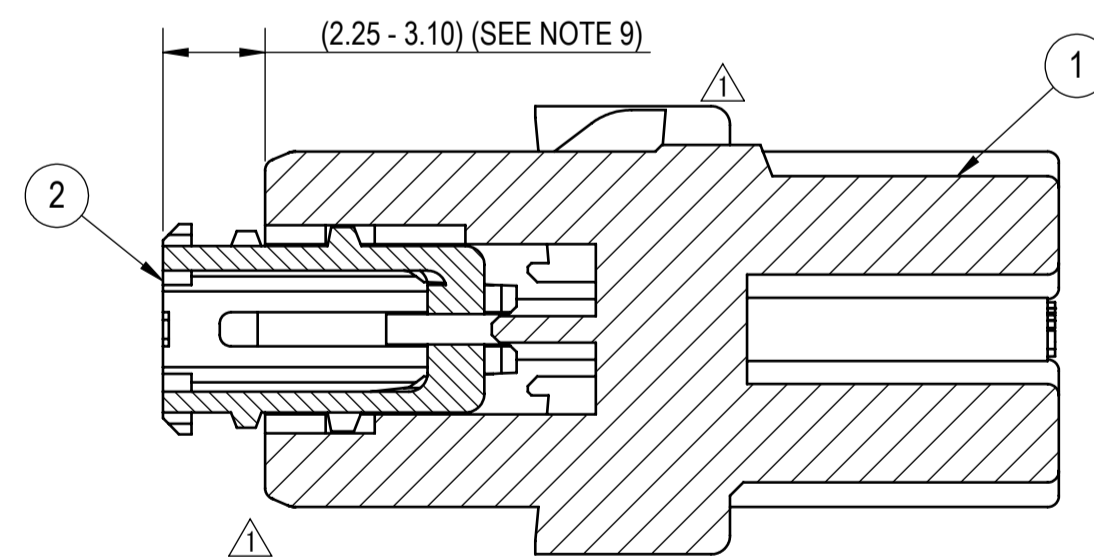
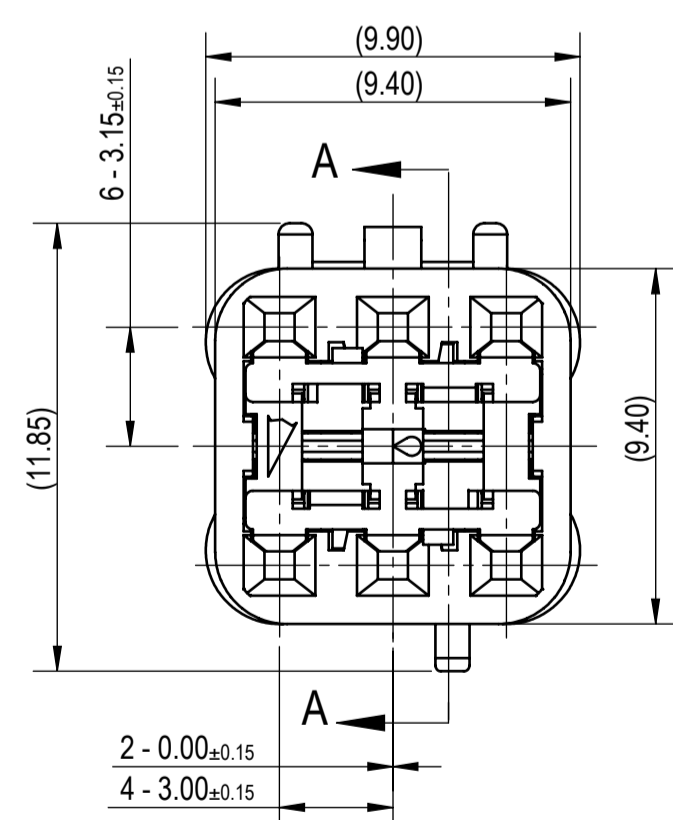
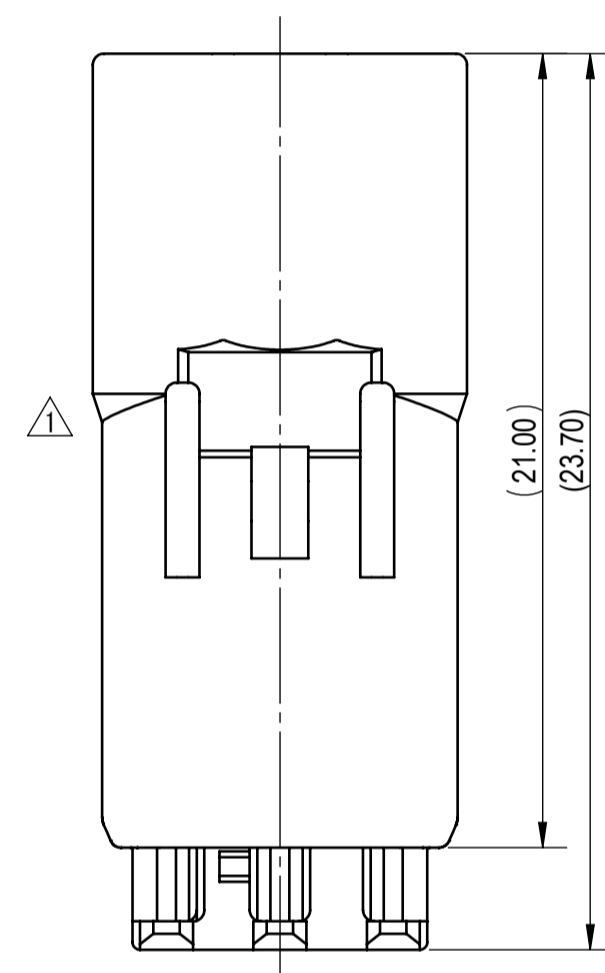
7298-8740-40, ETC.
KEYWAY B

(5/1)

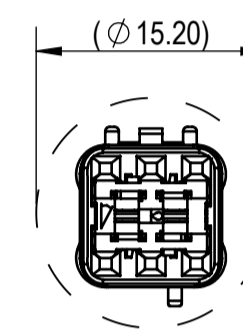


7298-8944-10, ETC.
KEYWAY C

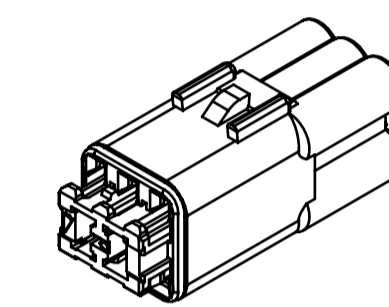
(5/1)



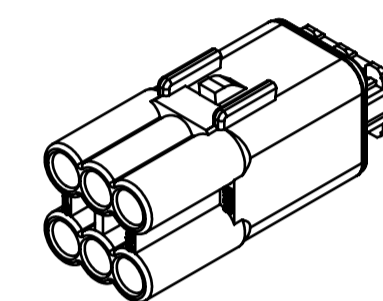
SECTION A-A



RECOMMENDED PASS-THROUGH
HOLE DIMENSION
(1mm CLEARANCE ALL AROUND)
(2/1)



FRONT ISOMETRIC VIEW
(2/1)



REAR ISOMETRIC VIEW
(2/1)

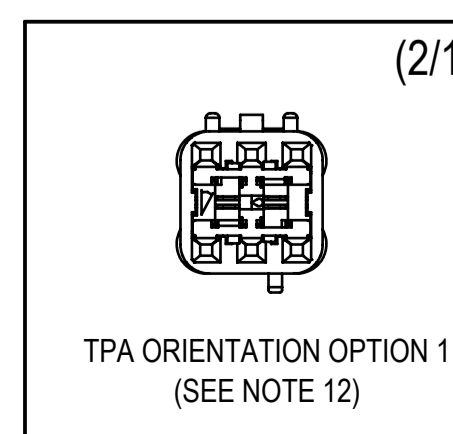
NOTES:

- PARTS MUST BE PURCHASED FROM YAZAKI.
- PARTS MUST BE FREE OF FLASH AND IMPERFECTIONS THAT AFFECT FUNCTION.
- APPLICABLE TERMINAL: SEE 7116-4415-02:R DRAWING (0.64mm RH TYPE)
MAX WIRE OD: 1.90 mm
MIN WIRE OD: 0.81 mm
- APPLICABLE WIRE SEAL: SEE 7158-3165-90:R DRAWING (0.64mm RH TYPE)
- APPLICABLE CAVITY PLUG: SEE 7158-3169-40:R DRAWING (0.64mm RH TYPE)
- MATING PART NUMBER: SEE TABLE 2.
- PART SATISFIES USCAR-2 REV 6, FEB 2013 (T3/V2/S3/MF2)
- PART TO COMPLY WITH YPES-31-038 REQUIREMENTS.
- THIS DIMENSION SHOWS THE PRE-SET POSITION OF THE TPA.
- THIS DRAWING IS TO BE USED FOR INTERNAL YAZAKI PSW SUBMISSION.
- HANDLING MANUAL NUMBER: YPES-15-1746E
- TPA CAN BE INSTALLED IN EITHER ORIENTATION SHOWN WITH NO EFFECTS TO THE FUNCTION OF THE PART.

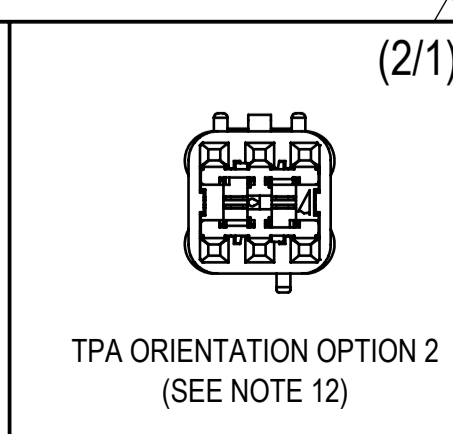
TABLE 1	SUB-ASSEMBLY PART NUMBER	NO.	PART NUMBER	PART NAME	MATERIAL	COLOR	QUANTITY
	SEE TABLE 2	①	SEE TABLE 2	6P 0.64mm RH SEALED FEMALE CONNECTOR HOUSING	PBT-GF15	SEE TABLE 2	1
		②	7172-1486	6P 0.64mm RH SEALED FEMALE CONNECTOR TPA	PBT-GF15	NATURAL	1

TABLE 2	SUB-ASSEMBLY PART NUMBER	HOUSING PART NUMBER	KEYWAY	COLOR	X=BLOCKED CAVITY						MATING PART NUMBER	
					1	2	3	4	5	6		
	7289-8958-30	7189-8958-30	A	BLACK								7297-2805-30
	7289-8959-30	7189-8959-30	A	BLACK	X							7297-2806-30
	7298-8740-40	7198-8743-40	B	LIGHT GRAY								7297-8745-40
	7298-8741-40	7198-8741-40	B	LIGHT GRAY	X					X		7297-8746-40
	7298-8944-10	7198-8944-10	C	DARK GRAY								7297-8943-10
	7298-8946-10	7198-8946-10	C	DARK GRAY	X					X		7297-8945-10

△	DATE	REVISION RECORD	NO.	CHKD
△	01-20-2022	ADDED KEYWAY B / KEYWAY C & CONFIGURATIONS. REMOVED OBSOLETE PN & UPDATED NOTE	C22-A029	F.R
△	07-17-2018	FORM CHANGE AND MADE NEW CONFIGURATION AVAILABLE	C18-A628	D.M.
-	08-08-2017	NEW	C17-A817	J.G.



(2/1)



(2/1)

GENERAL TOLERANCE											
	10MAX	50MAX	100MAX	250MAX	250OVR	R5 MAX	R10 MAX	R20 MAX	R20 OVR	ANGLE	ECCENT
A	±0.15	±0.20	±0.30	±0.50	±0.75					±3°	0.1
B	±0.20	±0.30	±0.55	±0.95	±1.40	±0.20	±0.30	±0.50	±2.50	±3°	0.15
©	±0.30	±0.50	±0.80	±1.40	±2.00						
SPECIFIED										MASS	(1.40) g

CUSTOMER		MTRL SPEC.		TREAT. & FIN.	
CUSTOMER PART NO.	CUSTOMER DWG NO.	SEE TABLE		N/A	
OFFICE YNA	TRIAL PART NO.	NAME 6P 0.64mm RH SEALED FEMALE			
VENDOR		CONNECTOR SUB-ASSEMBLY			
VENDOR NO.		PART NO.	7289-8958-30, ETC.		
DWG TYPE R	DWG SOURCE 7289-8958-30:M	DWG DATE 08-08-2017	UNIT mm	SCL 5/1	ANGLE 3
APPROVED	CHECKED	CHECKED	DESIGN	DRAWN	
			ESTHER CRESWELL	FERNANDA RASCON	
			11-10-2016	01-20-2022	
YAZAKI CORPORATION					

ISSUE MARK