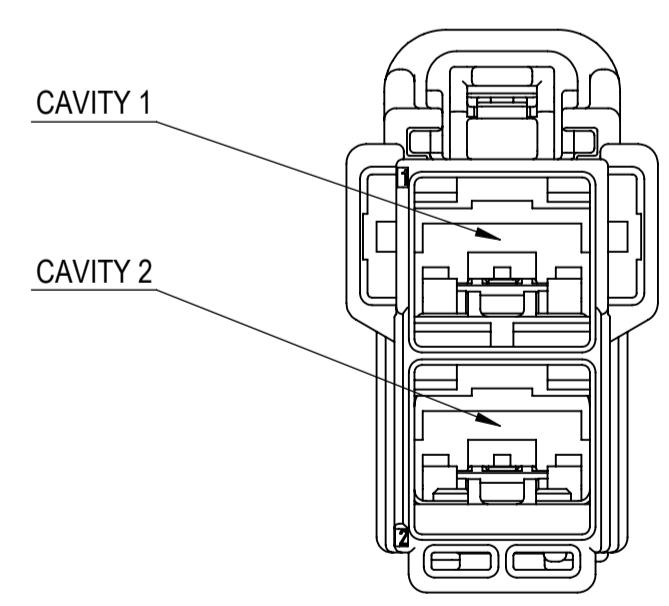
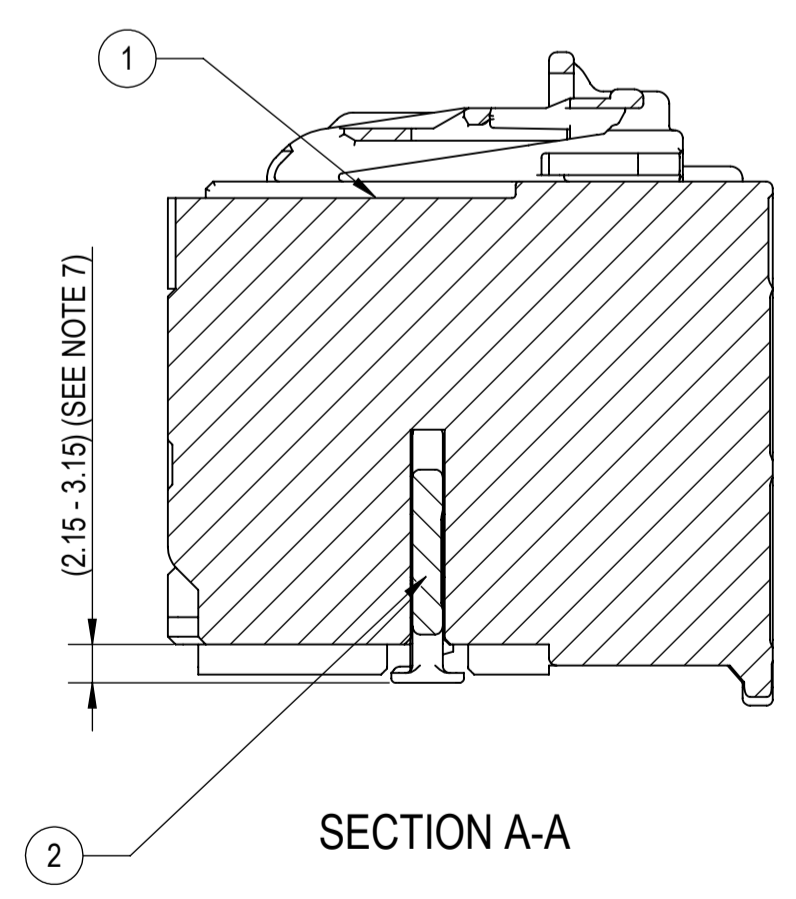
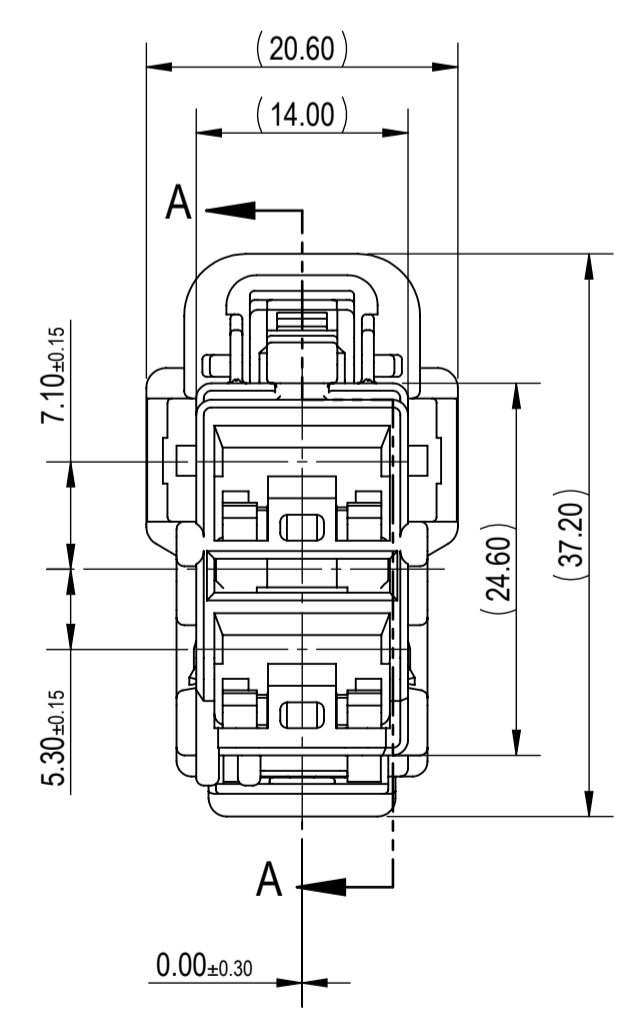
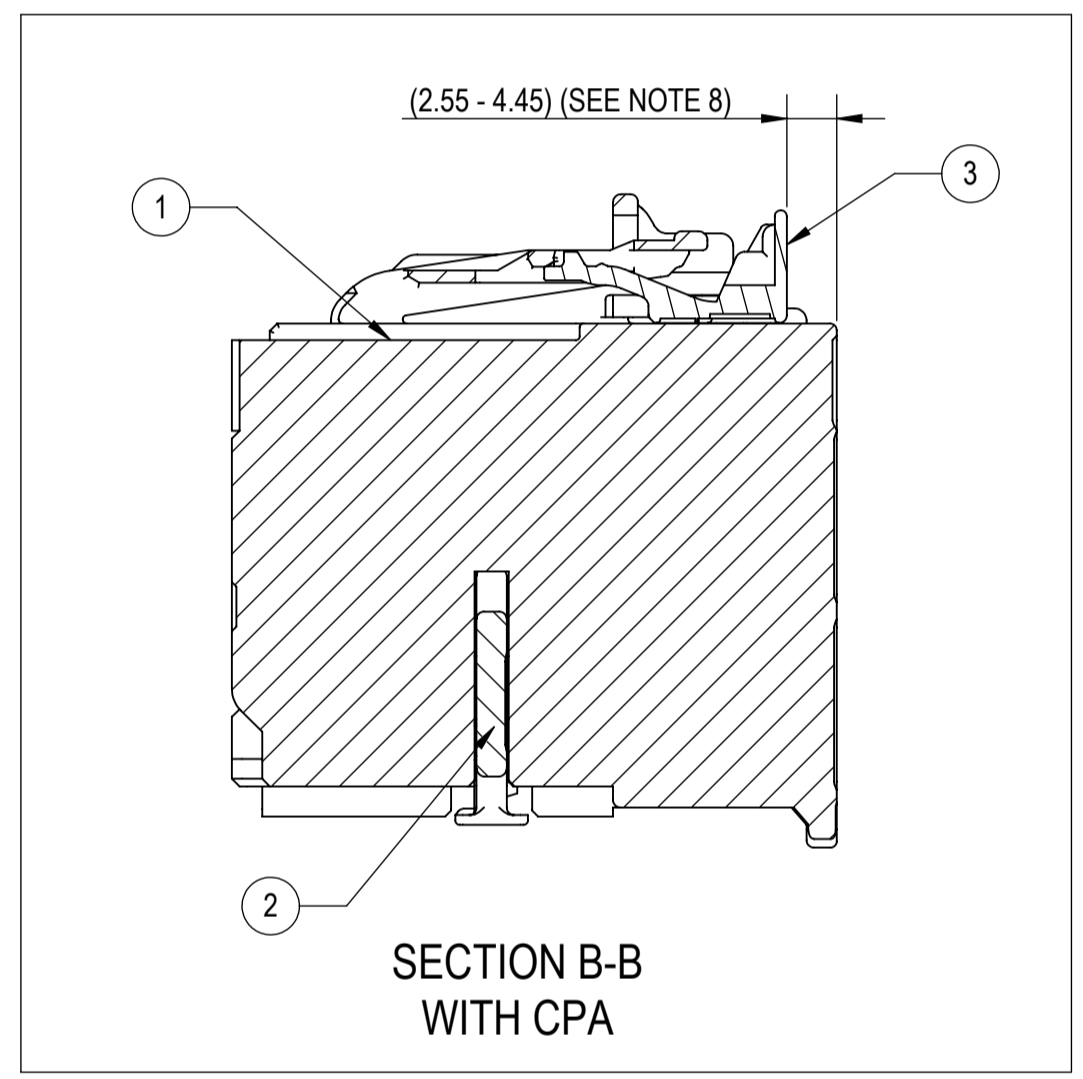
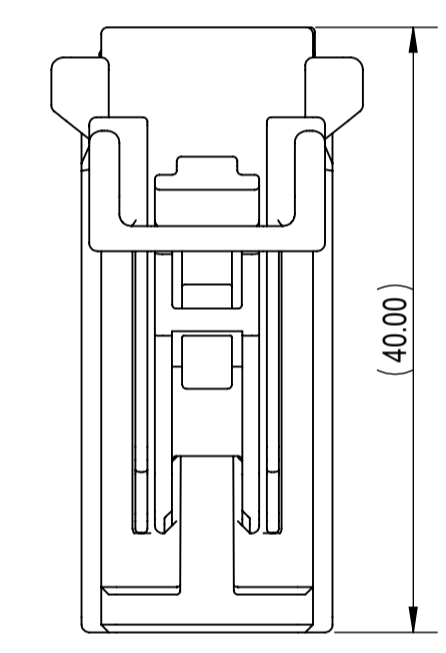
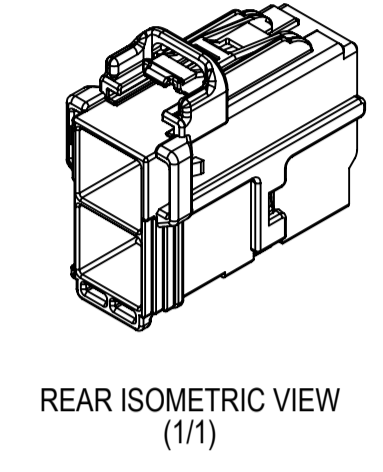
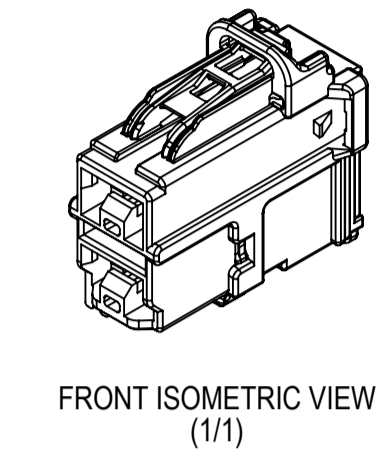
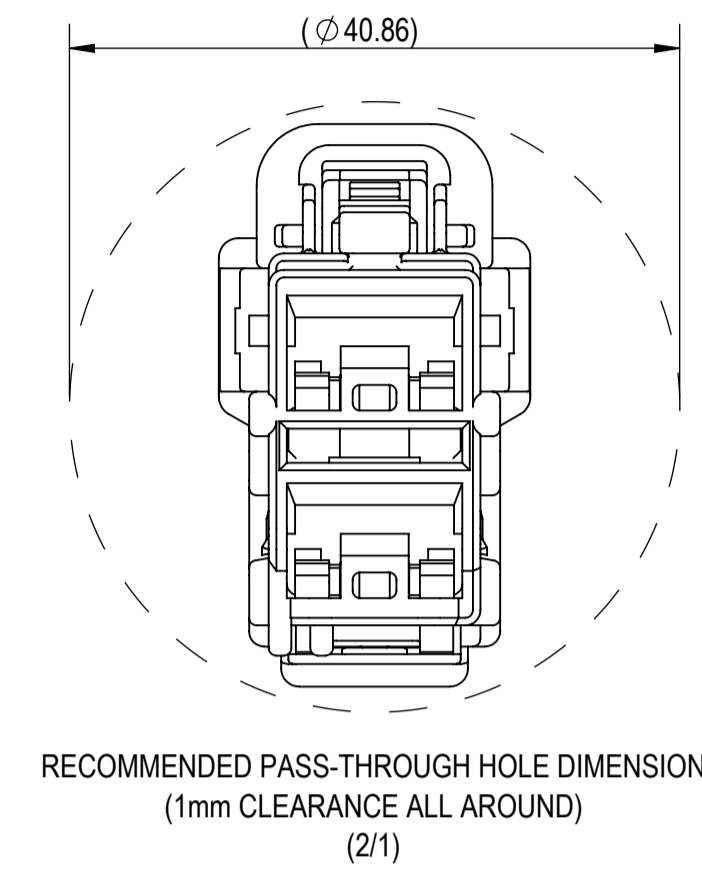


SUB ASSEMBLY PART NUMBER	NO.	PART NUMBER	PART NAME	MATERIAL	COLOR	QUANTITY	MASS (g)
7289-8737-30	1	7189-8732-30	2P 9.5mm YPT UNSEALED FEMALE CONNECTOR HOUSING	PBT-GF15	BLACK	1	(9.97)
	2	7172-1476	2P 9.5mm YPT UNSEALED FEMALE CONNECTOR ISL	PBT-GF15	NATURAL	1	
7289-8732-30	1	7189-8732-30	2P 9.5mm YPT UNSEALED FEMALE CONNECTOR HOUSING	PBT-GF15	BLACK	1	(10.29)
	2	7172-1476	2P 9.5mm YPT UNSEALED FEMALE CONNECTOR ISL	PBT-GF15	NATURAL	1	
	3	7172-1375-50	YESC KAIZEN LARGE LOCK CPA	PBT-GF15	RED	1	



- NOTES:
- PARTS MUST BE PURCHASED FROM YAZAKI.
  - PARTS MUST BE FREE OF FLASH AND IMPERFECTIONS THAT AFFECT FUNCTION.
  - APPLICABLE TERMINAL: SEE 7116-5625-02; R DRAWING (9.5mm YPT) MAX WIRE OD: 8.30mm
  - MATING PART NUMBER: 7288-8751-30
  - PART SATISFIES PF.90012 (T2/V1/S1/MF3) CHANGE LEVEL A.
  - PART TO COMPLY WITH YPES-31-038 REQUIREMENTS.
  - THIS DIMENSION SHOWS THE PRE-SET POSITION OF THE ISL.
  - THIS DIMENSION SHOWS THE PRE-SET POSITION OF THE CPA.
  - THIS DRAWING IS TO BE USED FOR INTERNAL YAZAKI PSW SUBMISSION.
  - HANDLING MANUAL NUMBER: YPES-15-1758E
  - CONNECTOR IS CAPABLE OF ACCEPTING A DRESS COVER.

LET	DATE	REVISION RECORD	NO.	CHKD
-	9-29-2017	NEW	C17-AA19	K.S.

GENERAL TOLERANCE												
	10MAX	50MAX	100MAX	250MAX	250OVR	R5 MAX	R10 MAX	R20 MAX	R20 OVR	ANGLE	ECCENT	
A	±0.15	±0.2	±0.3	±0.5	±0.75					±3°	0.1	
B	±0.2	±0.3	±0.55	±0.95	±1.4	±0.2	±0.3	±0.5	±2.5	±3°	0.1	
C	±0.3	±0.5	±0.8	±1.4	±2					±3°	0.15	
	SPECIFIED										MASS	SEE TABLE

CUSTOMER		MATERIAL SPEC.		TREAT. & FIN.	
CUSTOMER PART NO.	CUSTOMER DWG NO.	SEE TABLE	N/A		
OFFICE	TRIAL PART NO.	NAME			
YNA		2P 9.5mm YPT SYSTEM UNSEALED FEMALE CONNECTOR SUB ASSEMBLY			
VENDOR		PART NO.	7289-8737-30, ETC.		
VENDOR NO.		CH. CODE			
		DWG NO.	7289-8737-30:R		SET DWG NO.
		<b>YAZAKI CORPORATION</b>			