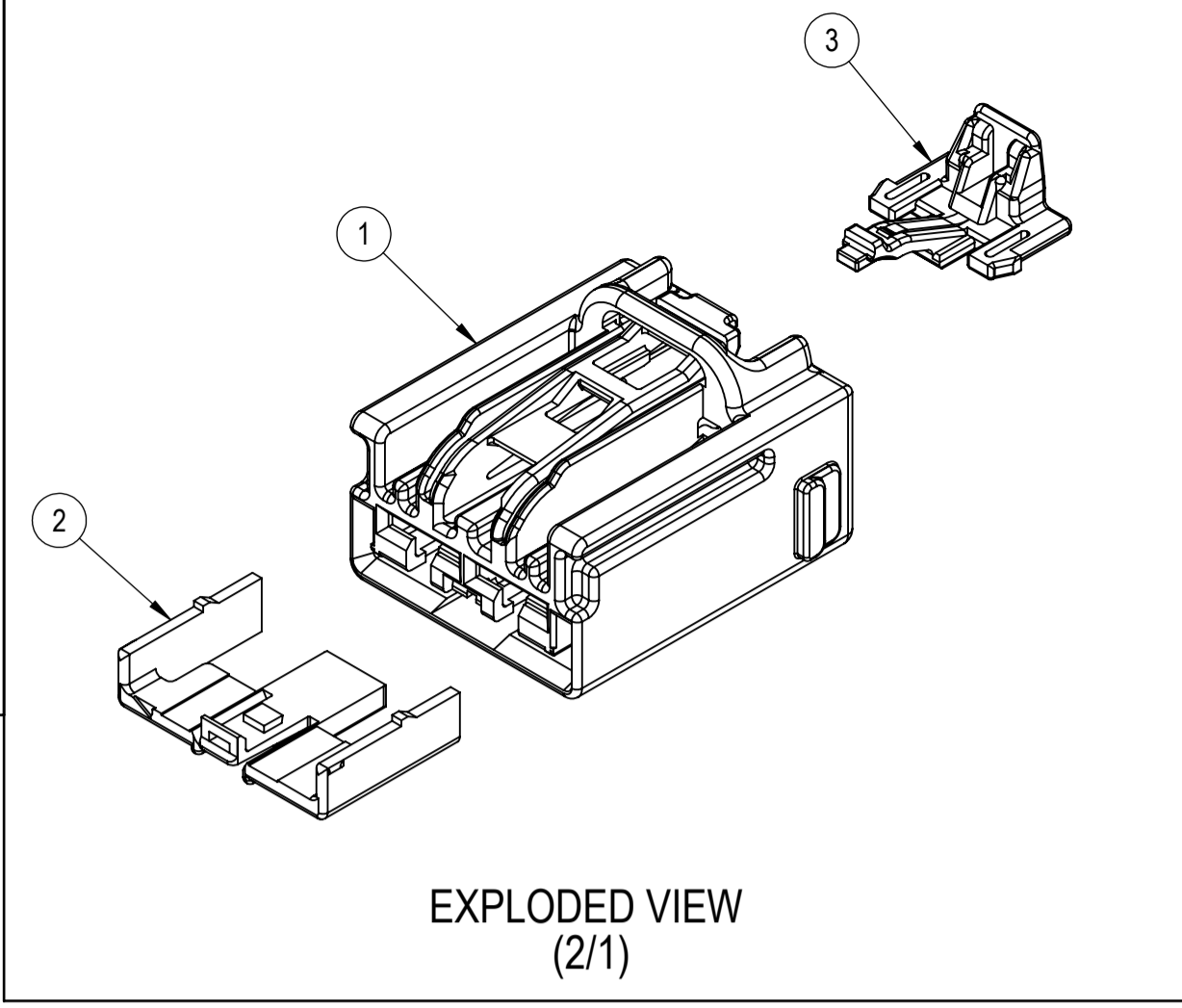


7289-7782-40, ETC.
KEYWAY A

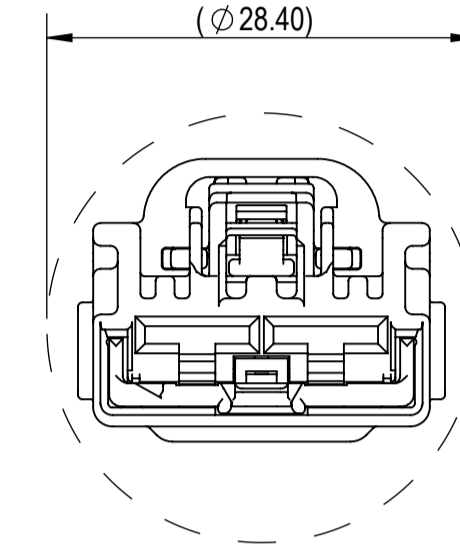
(2/1)



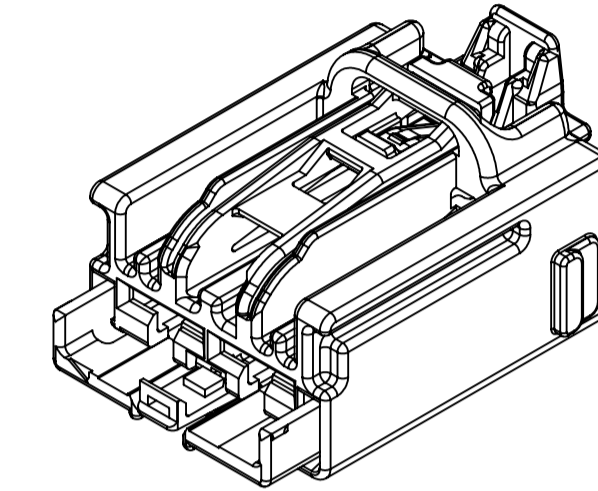
EXPLODED VIEW
(2/1)

TABLE 1	SUB-ASSEMBLY PART NUMBER	NO.	PART NUMBER	PART NAME	MATERIAL	COLOR	QUANTITY
	SEE TABLE 2	①	SEE TABLE 2	2P 6.3 YESC KAIZEN UNSEALED FEMALE CONNECTOR HOUSING	PBT-GF15	SEE TABLE 2	1
		②	7158-5987	2P 6.3 YESC KAIZEN UNSEALED FEMALE CONNECTOR FRONT HOLDER	PBT	NATURAL	1
		③	7172-1375-50	YESC KAIZEN LARGE LOCK CPA	PBT-GF15	RED	1

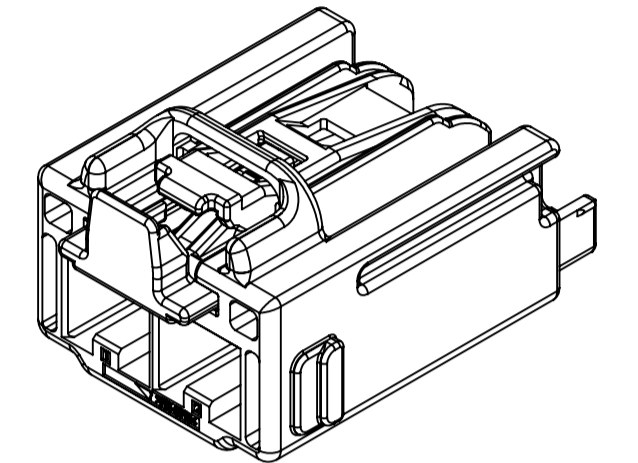
TABLE 2	SUB-ASSEMBLY PART NUMBER	HOUSING PART NUMBER	KEYWAY	CPA	COLOR	MASS (g)	YAZAKI INLINE MATING PART NUMBER
	7289-7782-40	7189-7782-40	A	Y	LIGHT GRAY	(6.20)	7282-6458-40 7297-2051-40
	7289-7782-30	7189-7782-30	A	Y	BLACK	(6.20)	7282-6458-30 7297-2114-30



RECOMMENDED PASS-THROUGH HOLE DIMENSION
(1mm CLEARANCE ALL AROUND)
(2/1)



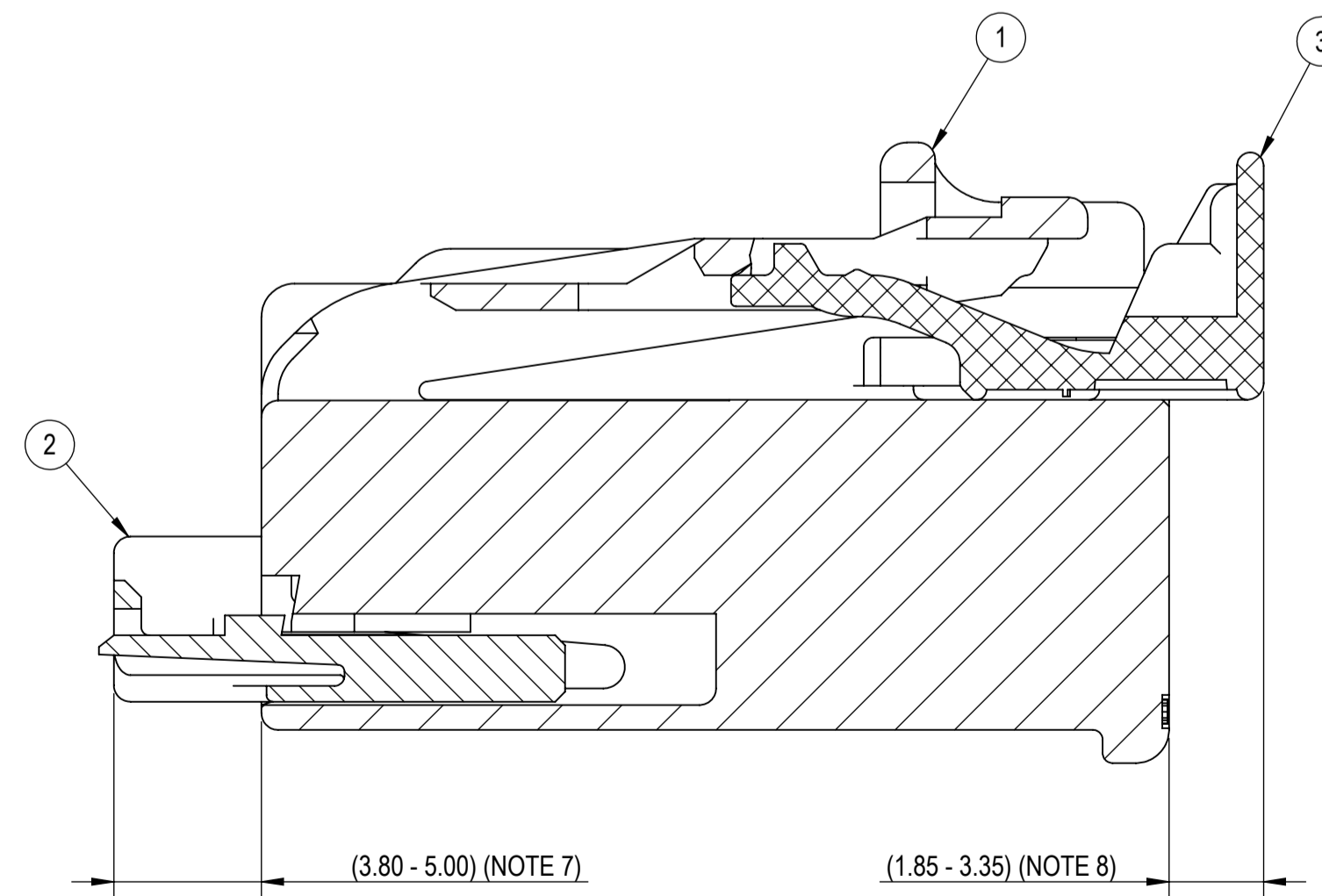
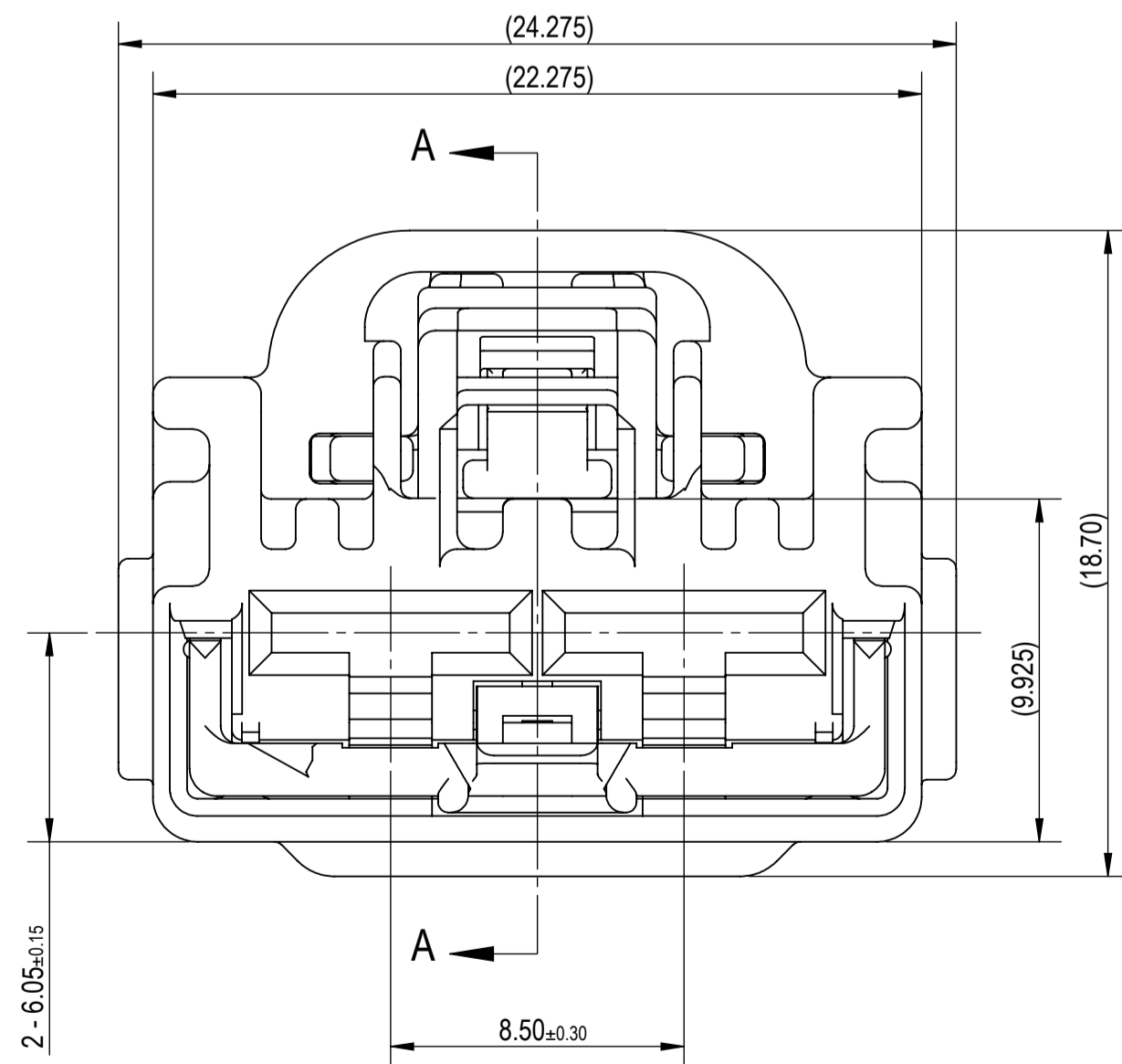
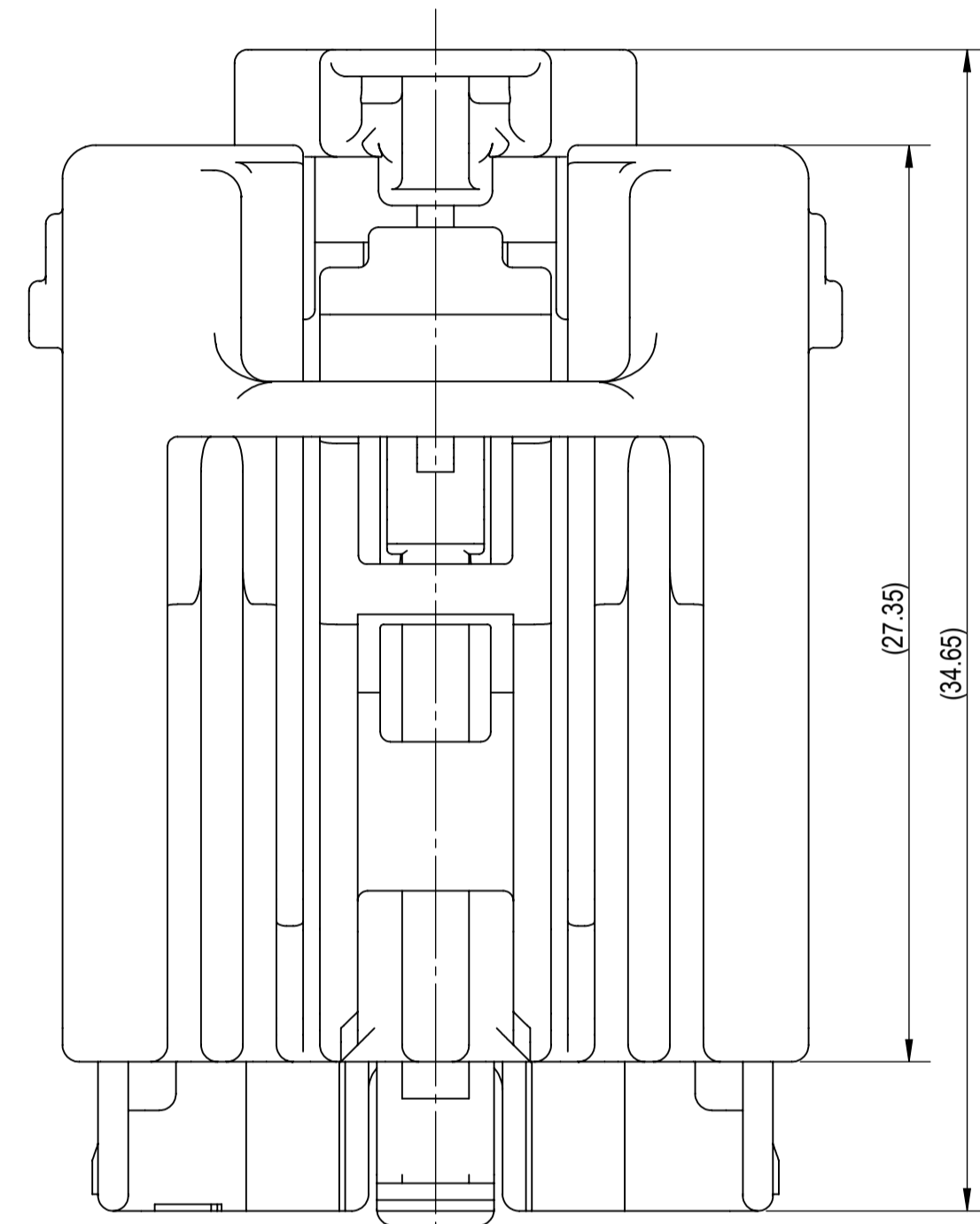
FRONT ISOMETRIC VIEW
(2/1)



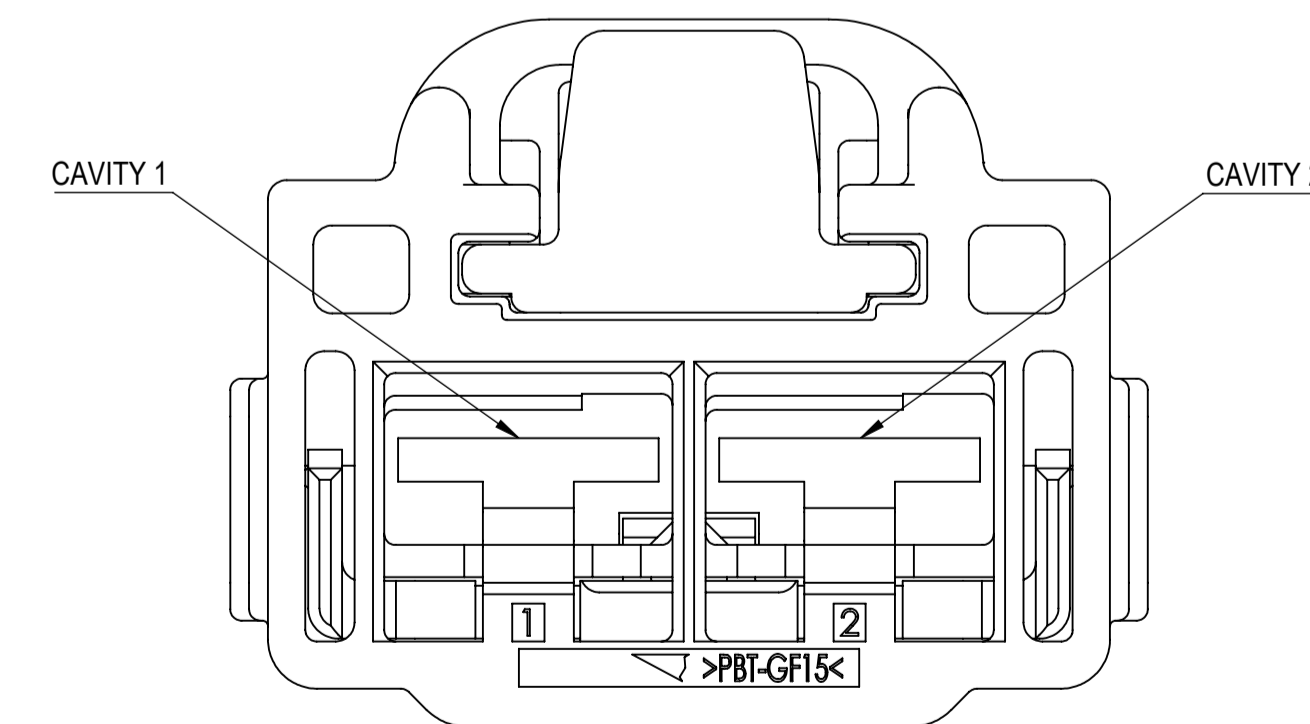
REAR ISOMETRIC VIEW
(2/1)

NOTES:

- PARTS MUST BE PURCHASED FROM YAZAKI.
- PARTS MUST BE FREE OF FLASH AND IMPERFECTIONS THAT AFFECT FUNCTION.
- APPLICABLE TERMINAL: SEE 7116-4120-02:R DRAWING (6.3 YESC UNSEALED) MAX WIRE OD: 4.90mm
- MATING PART NUMBER: SEE TABLE 2
- PART SATISFIES GMW 3191, JUNE 2012, (TC2/VC1/SC1/MF2) WITH THE FOLLOWING EXCEPTIONS:
4.2.4 TERMINAL TO CONNECTOR ENGAGEMENT FORCE WITH TPA IN FULLY SEATED POSITION = TERMINALS SEATED AT 45N MIN
- PART TO COMPLY WITH YPES-31-038 REQUIREMENTS.
- THIS DIMENSION SHOWS THE PRE-SET POSITION OF THE FRONT HOLDER.
- THIS DIMENSION SHOWS THE PRE-SET POSITION OF THE CPA.
- THIS DRAWING IS TO BE USED FOR INTERNAL YAZAKI PSW SUBMISSION.
- HANDLING MANUAL NUMBER: YPES-15-599E
- PART DESIGNED TO MEET USCAR INTERFACE: 630-U-002-1-Z01
- THIS PART IS SIMILAR TO 7283-6458-40, ETC. WITH MODIFICATIONS TO ACCEPT A CPA.



SECTION A-A



CUSTOMER PART NO.		CUSTOMER DWG NO.		MATERIAL SPEC.		TREAT. & FIN.	
YNA		7289-7782-40:M		SEE TABLE		N/A	
OFFICE				NAME			
YNA				2P 6.3 YESC KAIZEN UNSEALED			
VENDOR				FEMALE CONNECTOR SUB-ASSEMBLY			
VENDOR NO.				PART NO.			
				7289-7782-40, ETC.			
DWG TYPE				DWG NO.			
R				7289-7782-40:R			
APPROVED				DESIGN			
CHECKED				DRAWN			
CHECKED				ESTHER CRESWELL			
				ISABEL MUNIZ			
				06-21-2016			
				11-04-2019			
				YAZAKI CORPORATION			

GENERAL TOLERANCE											
	10MAX	50MAX	100MAX	250MAX	250OVR	R5 MAX	R10 MAX	R20 MAX	R20 OVR	ANGLE	ECCENT
A	±0.15	±0.20	±0.30	±0.50	±0.75	±0.20	±0.30	±0.50	±2.50	±3°	0.1
B	±0.20	±0.30	±0.55	±0.95	±1.40	±0.20	±0.30	±0.50	±2.50	±3°	0.1
C	±0.30	±0.50	±0.80	±1.40	±2.00	±0.20	±0.30	±0.50	±2.50	±3°	0.15
MASS	SEE TABLE 2										

LET	DATE	REVISION RECORD	NO.	CHKD
△	10-30-2019	ADDED MATING PART, REMOVED PASS-THROUGH (NOMINAL) VIEW.	C19-A966	IM
-	07-12-2017	NEW	C17-A730	HA

ISSUE MARK