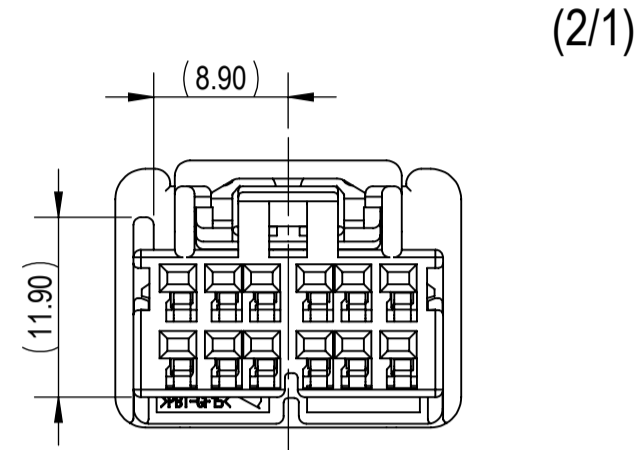
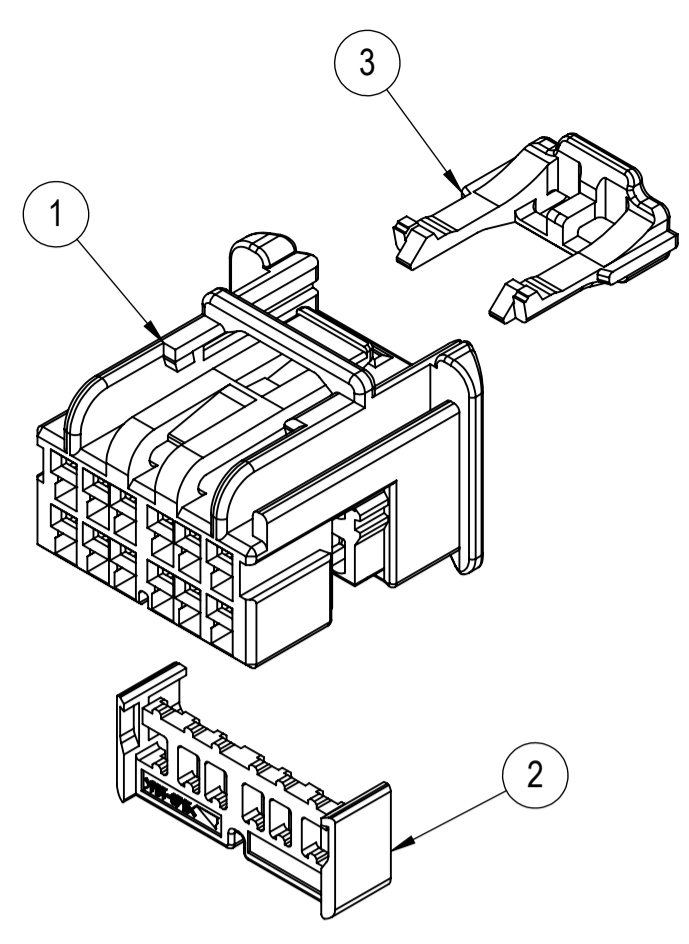


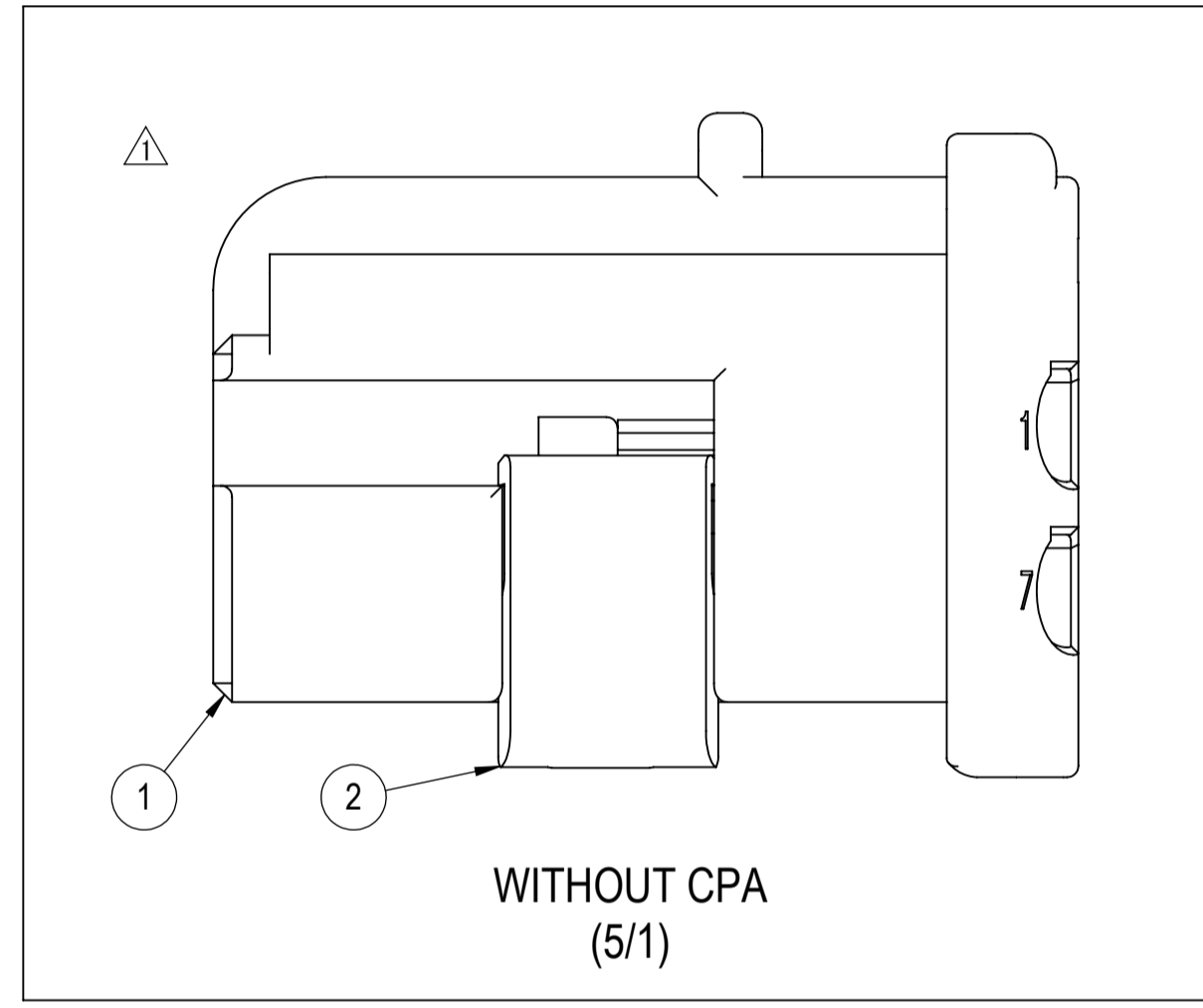
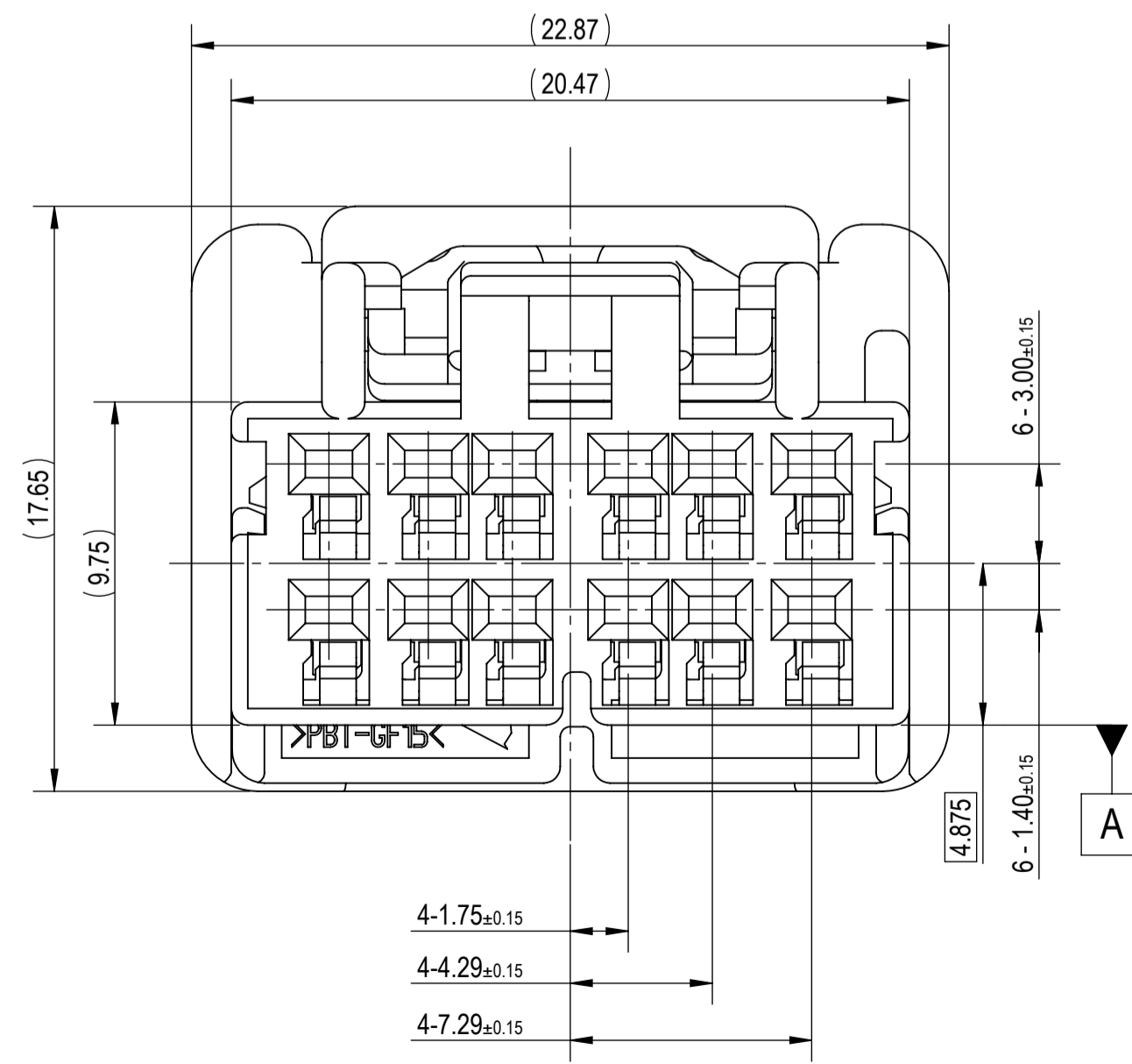
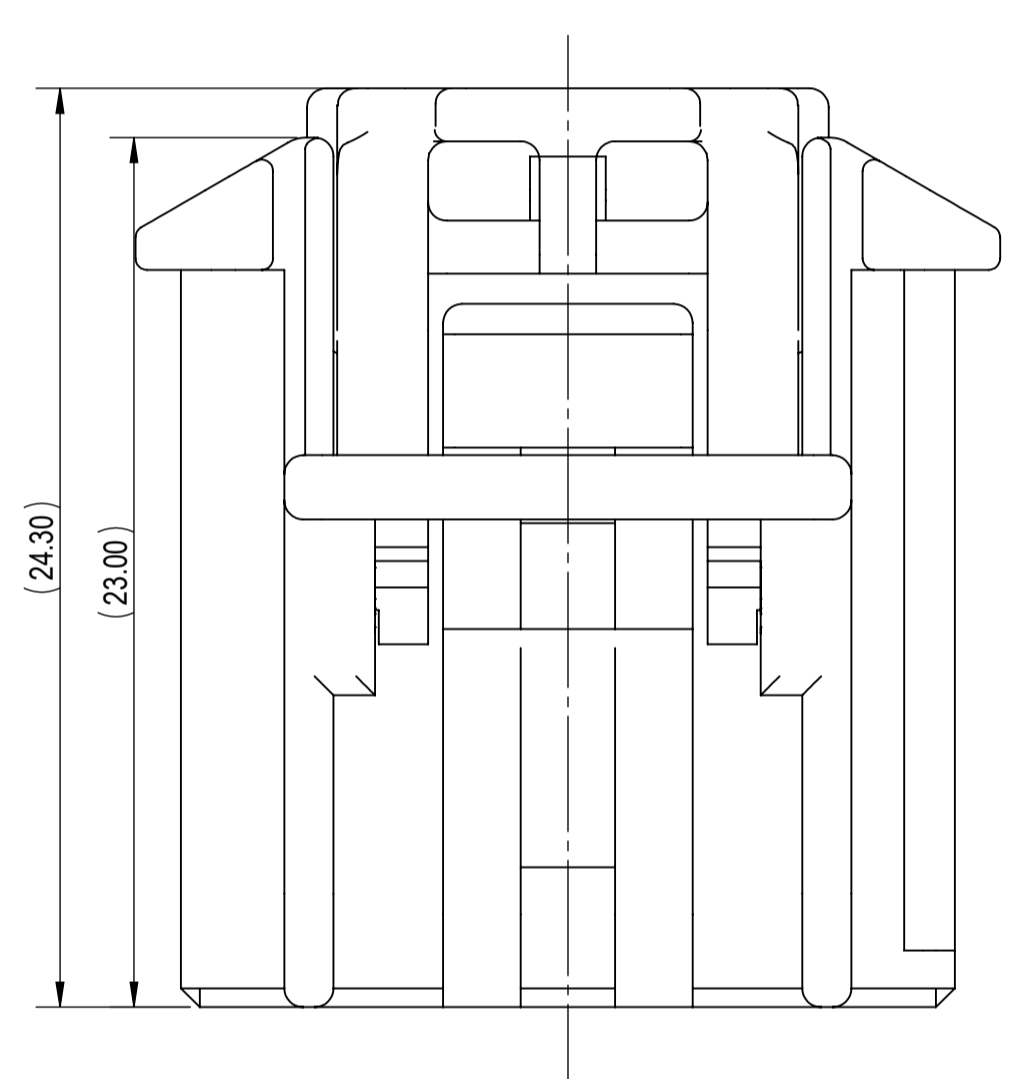
7289-6943-30, ETC.
KEYWAY A



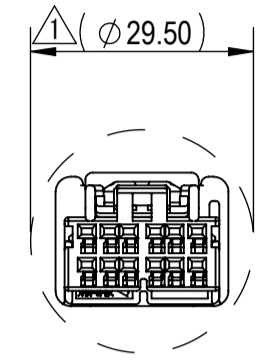
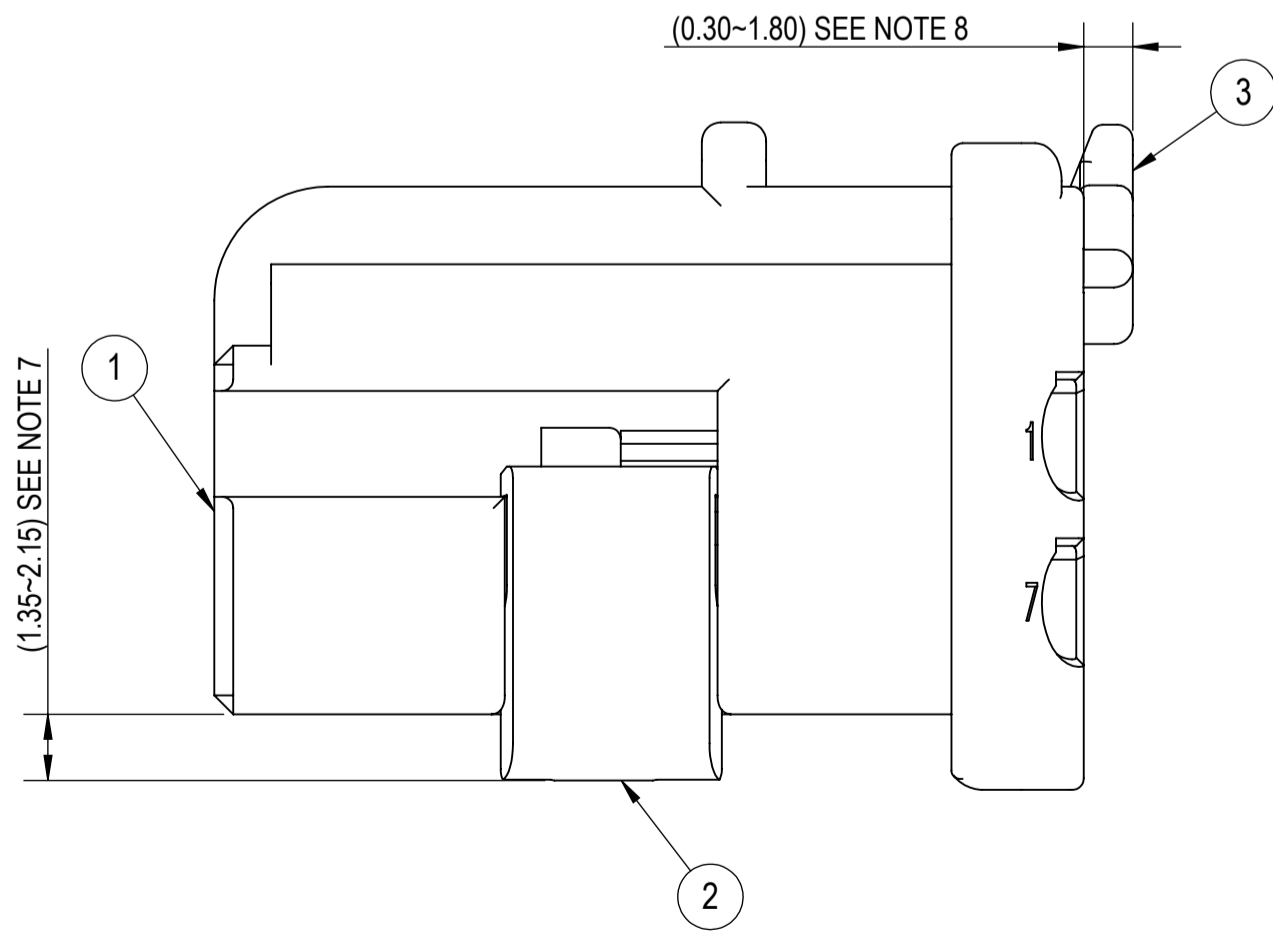
7289-6944-40, ETC.
KEYWAY B



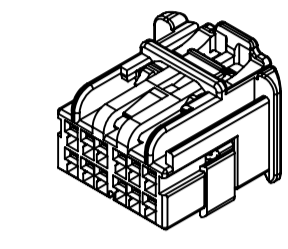
EXPLODED VIEW
(2/1)



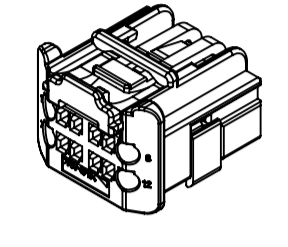
WITHOUT CPA
(5/1)



RECOMMENDED PASS-THROUGH
HOLE DIMENSION
(1mm CLEARANCE ALL AROUND)
(1/1)



FRONT ISOMETRIC VIEW
(1/1)

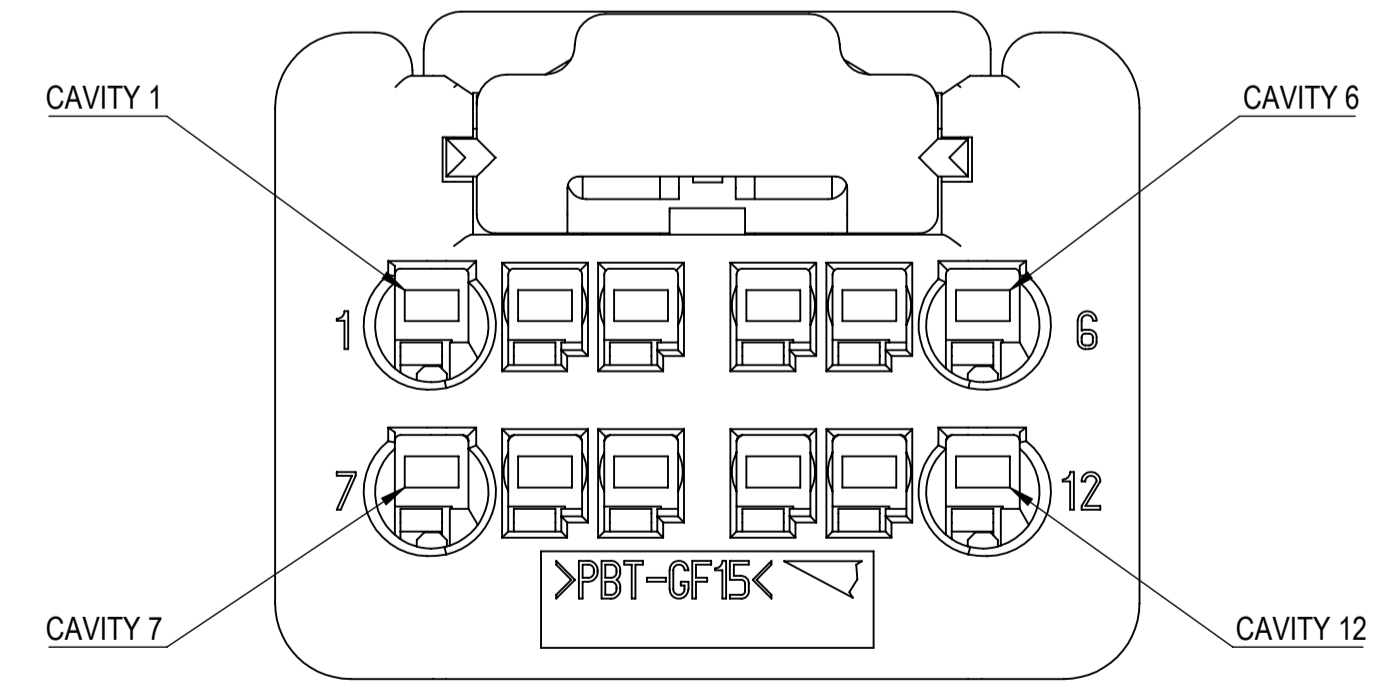


REAR ISOMETRIC VIEW
(1/1)

TABLE 1	SUB-ASSEMBLY PART NUMBER	NO.	PART NUMBER	PART NAME	MATERIAL	COLOR	QUANTITY
	SEE TABLE 2	SEE TABLE 2	1	SEE TABLE 2	12P 1.2mm UNSEALED FEMALE CONNECTOR HOUSING	PBT-GF15	SEE TABLE 2
		2	7172-1320	12P 1.2mm UNSEALED CONNECTOR ISL	PBT-GF15	NATURAL	1
		3	7172-1300	LARGE 1.2mm SYSTEM UNSEALED CONNECTOR CPA	PBT-GF15	NATURAL	1
SEE TABLE 2	SEE TABLE 2	1	SEE TABLE 2	12P 1.2mm UNSEALED FEMALE CONNECTOR HOUSING	PBT-GF15	SEE TABLE 2	1
		2	7172-1320	12P 1.2mm UNSEALED CONNECTOR ISL	PBT-GF15	NATURAL	1

TABLE 2	SUB-ASSEMBLY PART NUMBER	HOUSING PART NUMBER	KEYWAY	CPA	COLOR	MASS (g)	YAZAKI INLINE MATING PART NUMBER
	7289-6943-30	7189-6943-30	A	Y	BLACK	(4.94)	7288-6941-30
7298-1191-30			N		(4.68)		
7289-6944-40	7189-6944-40	B	Y	LIGHT GRAY	(4.94)	7288-6942-40	
7298-1192-40			N		(4.68)		

- NOTES:
- PARTS MUST BE PURCHASED FROM YAZAKI.
 - PARTS MUST BE FREE OF FLASH AND OTHER IMPERFECTIONS THAT AFFECT FUNCTION.
 - APPLICABLE TERMINAL: SEE 7196-1367-02-R DRAWING (1.2mm YAZAKI YCO UNSEALED) OR SEE 1354312 DRAWING (1.2mm APTIV OCS UNSEALED)
MAX WIRE OD: 2.40mm (CAVITIES 1, 6, 7, 12)
MAX WIRE OD: 1.90mm (CAVITIES 2-5, 8-11)
 - MATING PART NUMBER: SEE TABLE 2.
 - PART SATISFIES PF 90012, CHANGE LEVEL A, (T2/V1/S1/MF3).
 - PART TO COMPLY WITH YPES-31-038 REQUIREMENTS.
 - THIS DIMENSION SHOWS THE PRE-SET POSITION OF THE ISL.
 - THIS DIMENSION SHOWS THE PRE-SET POSITION OF THE CPA.
 - THIS DRAWING IS TO BE USED FOR INTERNAL YAZAKI PSW SUBMISSION.
 - HANDLING MANUAL NUMBER: YPES-15-1673E



LET	DATE	REVISION RECORD	NO.	CHKD
△	11-05-2019	REVISED APPLICABLE TERMINAL, ADDED PART NUMBERS IN KEYWAY VIEWS	C19-A974	HA
△	11-14-2017	ADDED NON-CPA PART NUMBERS	C17-AB78	JG
-	02-27-2017	NEW	C17-A230	DZ

GENERAL TOLERANCE											
	10MAX	50MAX	100MAX	250MAX	250OVR	R5 MAX	R10 MAX	R20 MAX	R20 OVR	ANGLE	ECCENT
A	±0.15	±0.2	±0.3	±0.5	±0.75					±3°	0.1
B	±0.2	±0.3	±0.55	±0.95	±1.4	±0.2	±0.3	±0.5	±2.5	±3°	0.1
C	±0.3	±0.5	±0.8	±1.4	±2					±3°	0.15
MASS											SEE TABLE 2

CUSTOMER		CUSTOMER DWG NO.		MATL SPEC.	SEE TABLE 1	TREAT. & FIN.	N/A
OFFICE YNA		TRIAL PART NO.		NAME 12P 1.2mm UNSEALED FEMALE CONNECTOR SUB-ASSEMBLY			
VENDOR		VENDOR NO.		PART NO. 7289-6943-30, ETC.			
DWG TYPE R		DWG SOURCE 7289-6943-30/M		DWG DATE 02-27-2017		CH. CODE	
APPROVED		CHECKED		CHECKED		DWG NO. 7289-6943-30:R	
DESIGN KIRK STAMBAUGH		DRAWN HECTOR AVITIA		YAZAKI CORPORATION			
11-02-2015		11-06-2019					