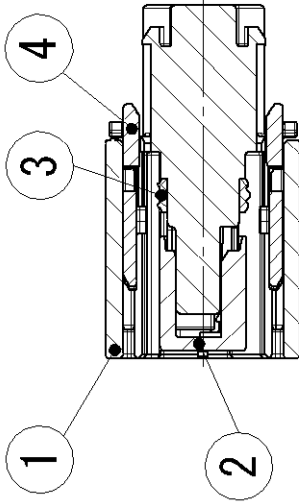
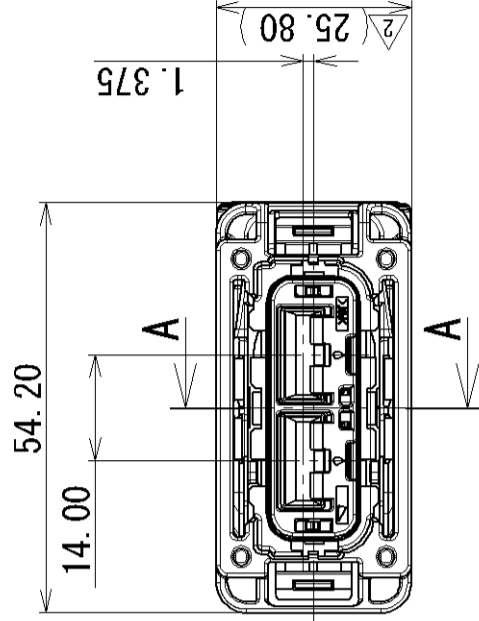
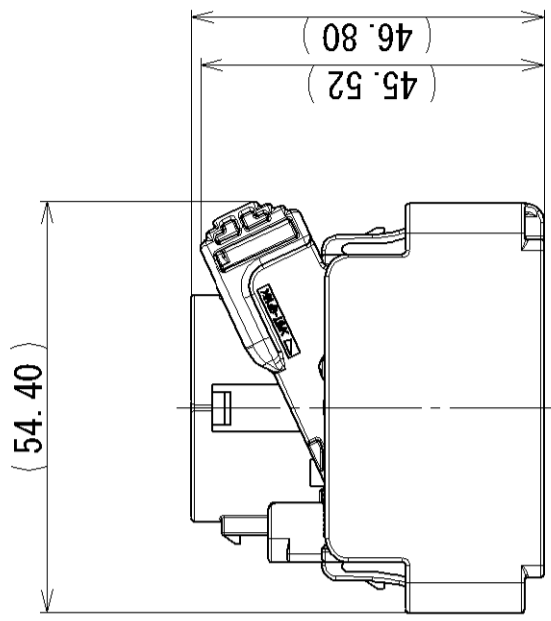


3

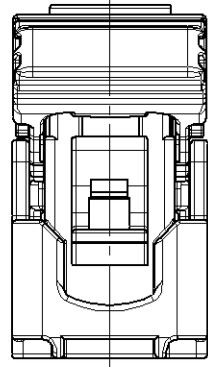
2

1

SUB ASSEMBLY PART NO. AND CH. CODE		NO.	PART NO. AND CH. CODE	PART NAME	MATERIAL	COLOR	QTY.
△ SEE TABLE 2		①	7189-2752-30	WPC 375 2P SEALED LIF HOUSING FEMALE	PBT-G	BLACK	1
		②	7172-0933	WPC 375 2P SEALED LIF FRONT HOLDER FEMALE	PBT	NATURAL	1
		③	7137-2981-80	WPC 375 2P SEALED LIF PACKING	SILICONE RUBBER	BROWN	1
		④	△ SEE TABLE 2	WPC 375 2P SEALED LIF LEVER	PBT-G	△ SEE TABLE 2	1
SUB ASSEMBLY PART NO. AND CH. CODE		△ TABLE 2		PART NO. AND CH. CODE	COLOR		
		△		7289-2752-30	7173-2689		NATURAL
		△		7289-4280-30	7173-2689-40		LIGHT GRAY



SEC. A-A



注記

- 適用端子品番 : 7116-5073-02, 7116-5152-02
- 適用ゴム栓品番 : 7158-3610-80, 7158-3611-60

NOTES

- APPLICABLE TERMINAL NO. : 7116-5073-02, 7116-5152-02
- APPLICABLE SEAL RUBBER NO. : 7158-3610-80, 7158-3611-60

GENERAL TOLERANCE

	10 MAX	50 MAX	100 MAX	250 MAX	R5 OVR	R10 MAX	R20 MAX	R20 OVR	ANGLE	ECCENT
A	±0.15	±0.2	±0.3	±0.5	±0.75				±3°	0.1
B	±0.2	±0.3	±0.55	±0.95	±1.4				±3°	0.1
C	±0.3	±0.5	±0.8	±1.4	±2				±3°	0.15

LET	DATE	REVISION RECORD	NO.	CHKD	CUSTOMER	VENDOR	OFFICE	TRIAL PART NO.	NAME	PART NO. CH. CODE	DWG NO.	SET DWG NO.
△	2015/04/01	CHANGED DIMENSION	C15-X034	T. M	CUSTOMER				WPC 375 2P SEALED LIF HOUSING	△ 7289-2752-30 ETC.		
△	2014/07/24	ADDED PART NO., ETC.	C14-Z428	B. A					SUB ASSEMBLY FEMALE			
△	2014/06/09	NEW	C14-Z308	R. D								
GENERAL TOLERANCE		10MAX	50MAX	100MAX	250MAX	2500VR	ANGLE	ECCENT				
A	±0.15	±0.2	±0.3	±0.5	±0.75	±30'	±30'	0.1				
B	±0.2	±0.3	±0.55	±0.95	±1.4	±30'	±30'	0.1				
C	±0.3	±0.5	±0.8	±1.4	±2	±30'	±30'	0.15				
SPECIFIED												
MATERIAL SPEC.		SEE TABLE		TREAT. & FIN.								
CUSTOMER		CUSTOMER PART NO.		CUSTOMER DWG NO.								
OFFICE		VENDOR		VENDOR NO.		DWG TYPE		DWG DATE	UNIT	SCL	ANGLE	
T. MATSUNAGA		T. TAKAHASHI		K. WACHI		R		2014/06/09	mm	1:1	3	
2015/04/01		2013/11/15		2015/04/01		APPROVED		CHECKED	DESIGN	DRAWN		
						T. MATSUNAGA						
						2015/04/01						
YAZAKI CORPORATION												

3

2

1