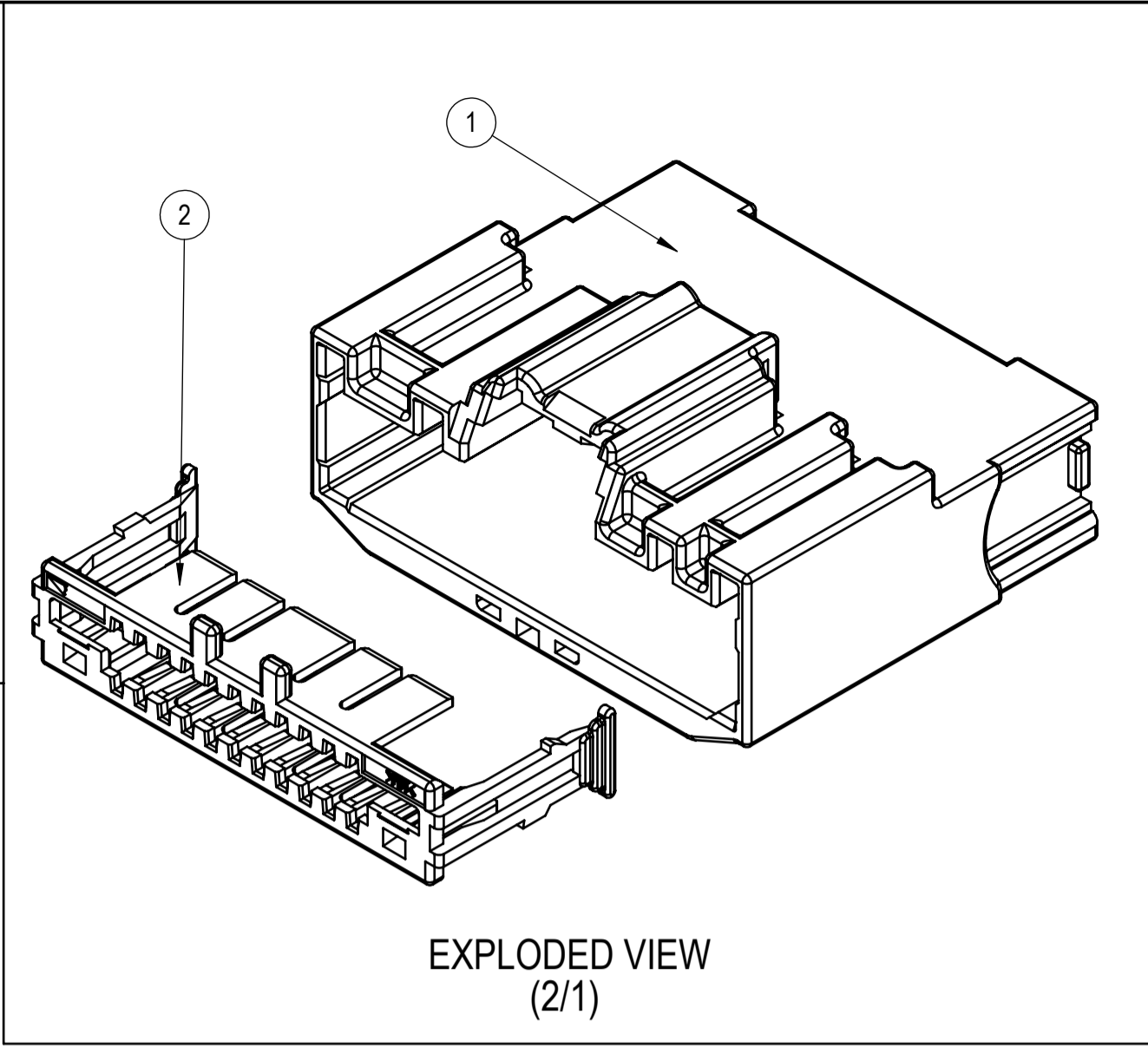
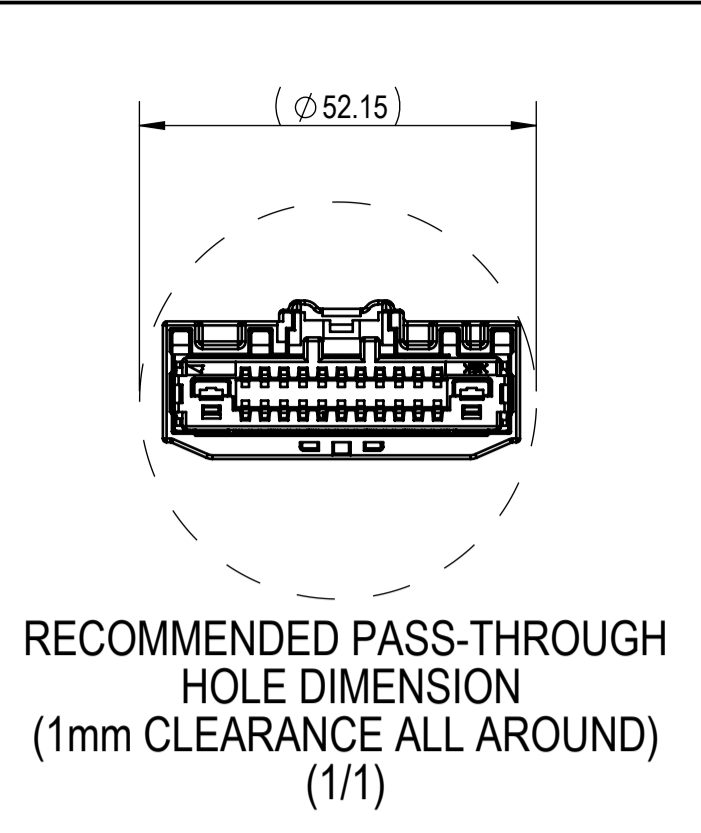


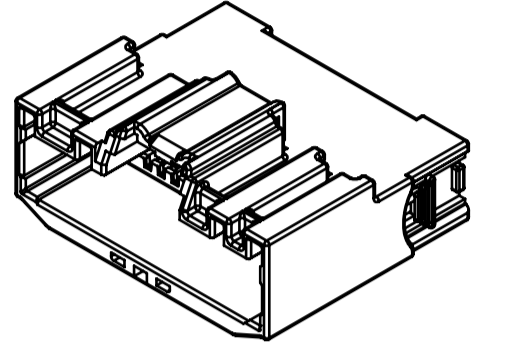
7288-3682-30
KEYWAY A



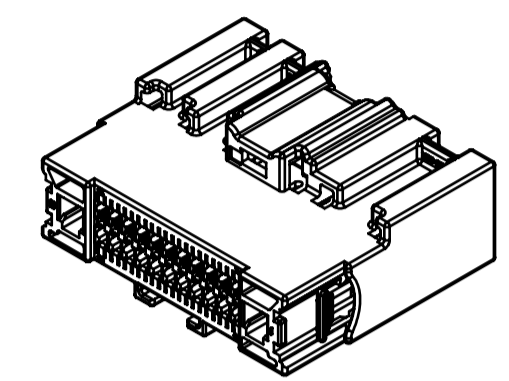
EXPLODED VIEW
(2/1)



RECOMMENDED PASS-THROUGH
HOLE DIMENSION
(1mm CLEARANCE ALL AROUND)
(1/1)

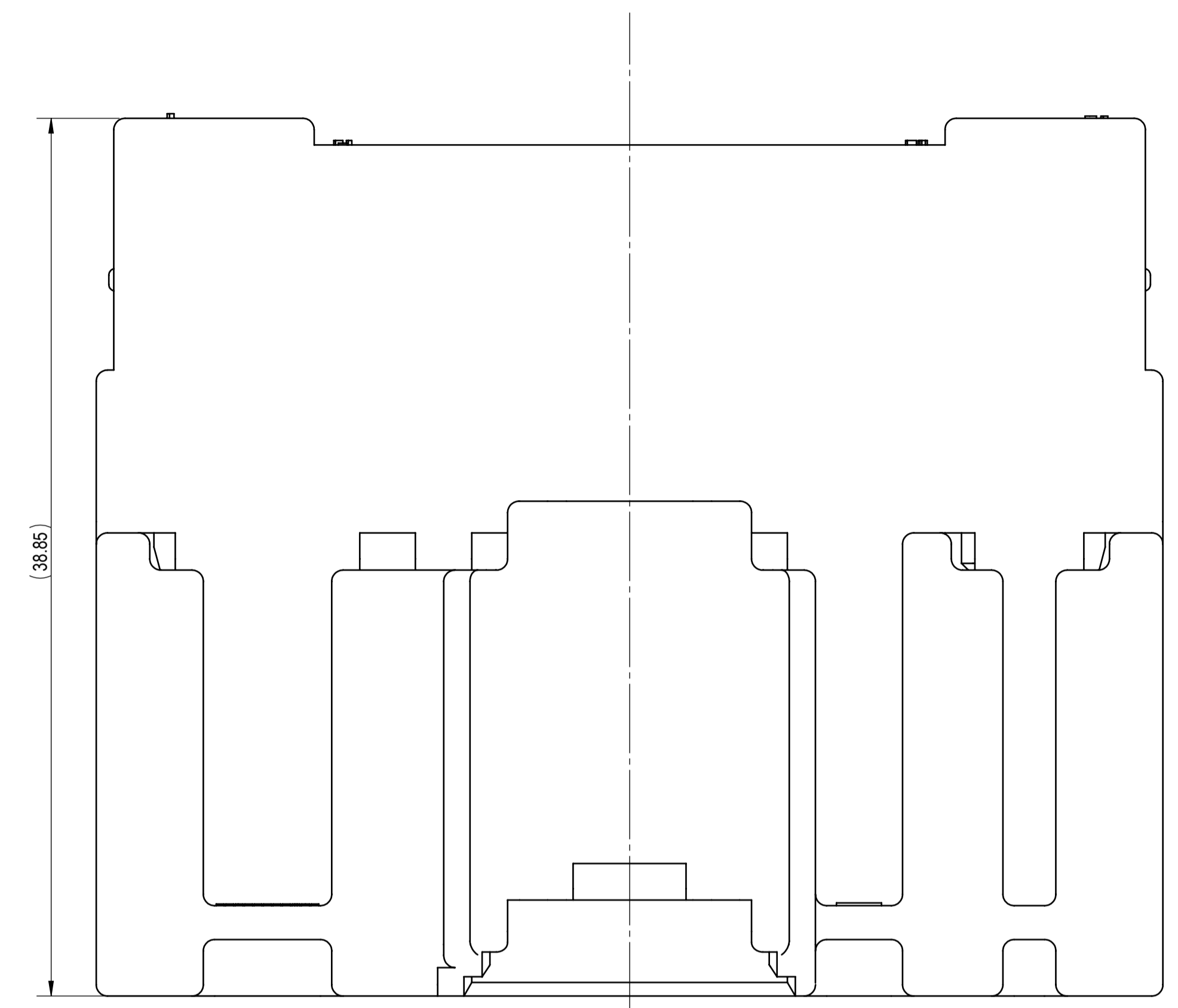


FRONT ISOMETRIC VIEW
(1/1)

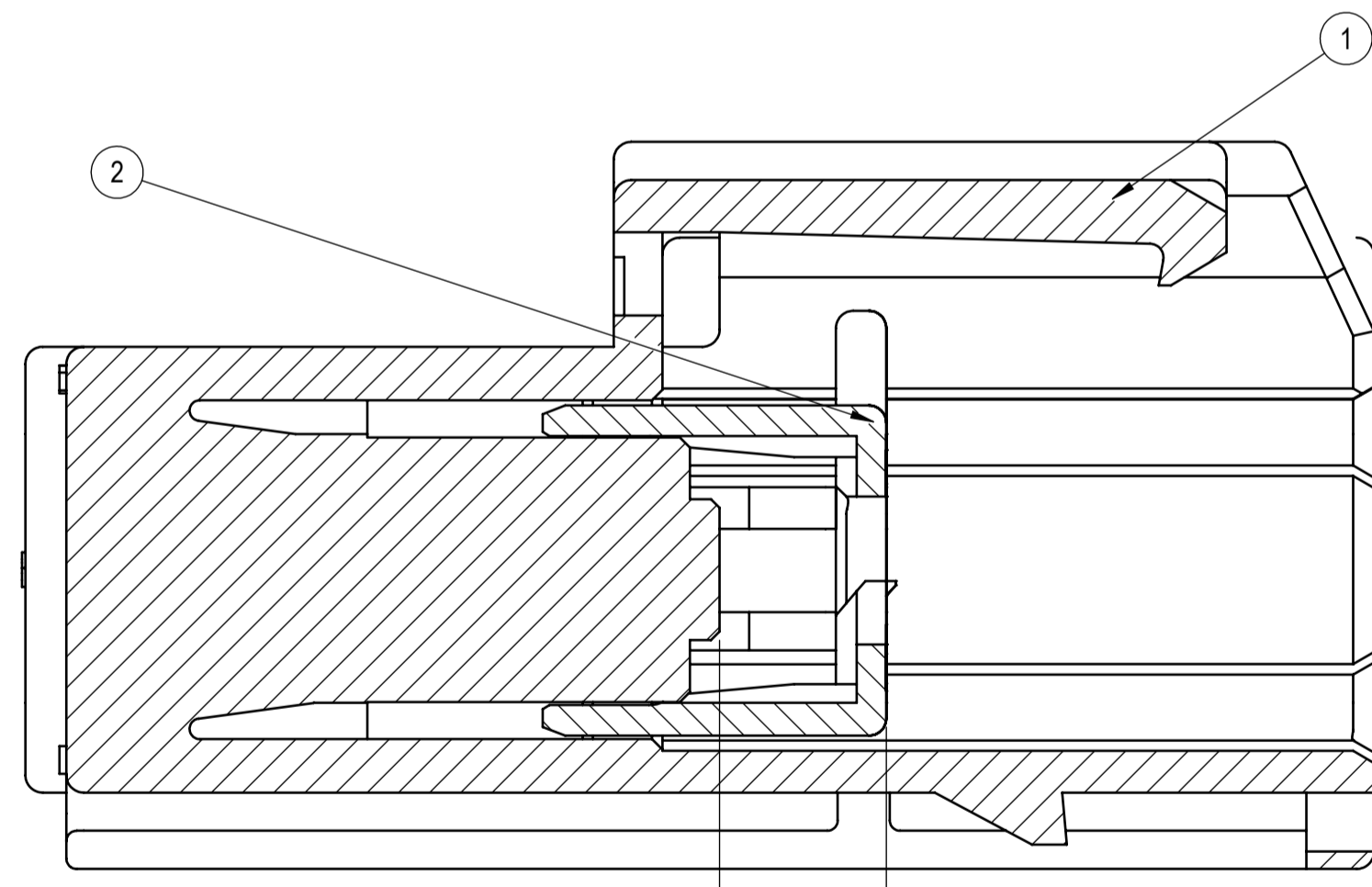
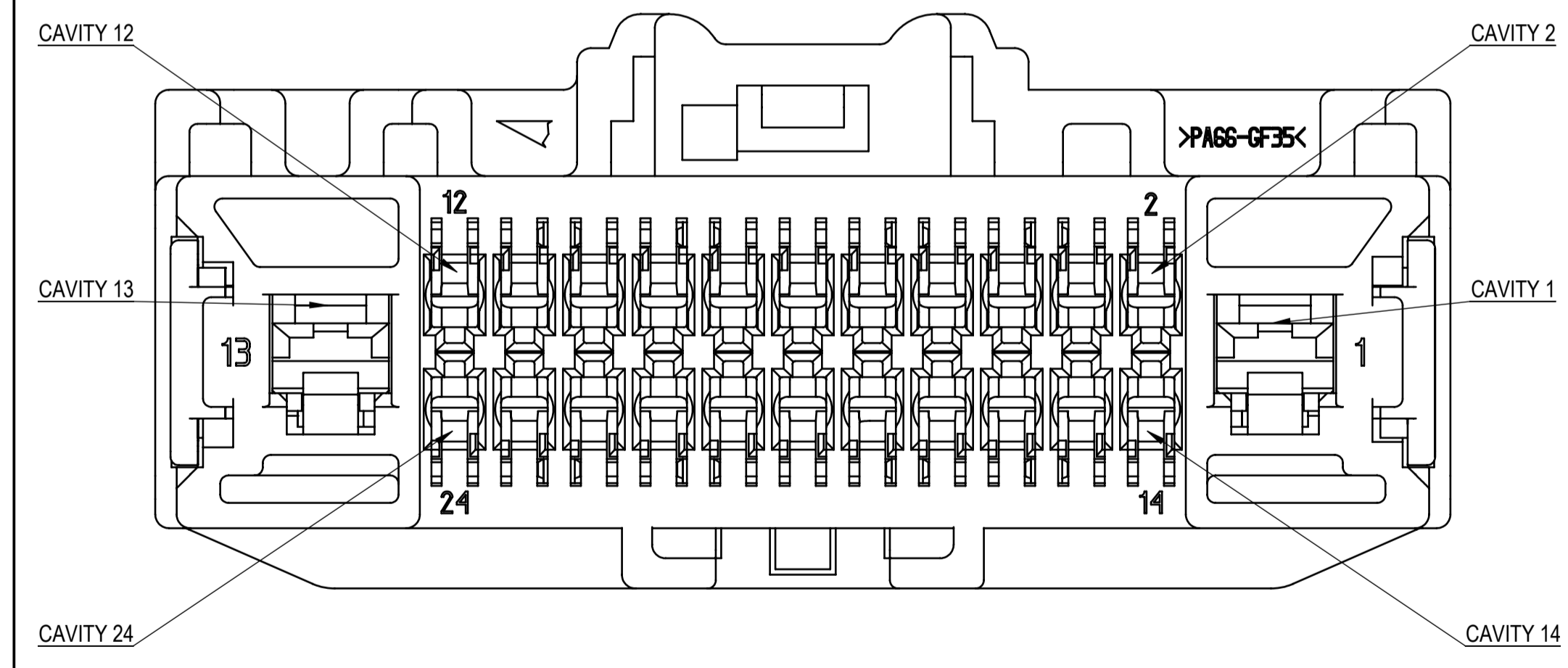


REAR ISOMETRIC VIEW
(1/1)

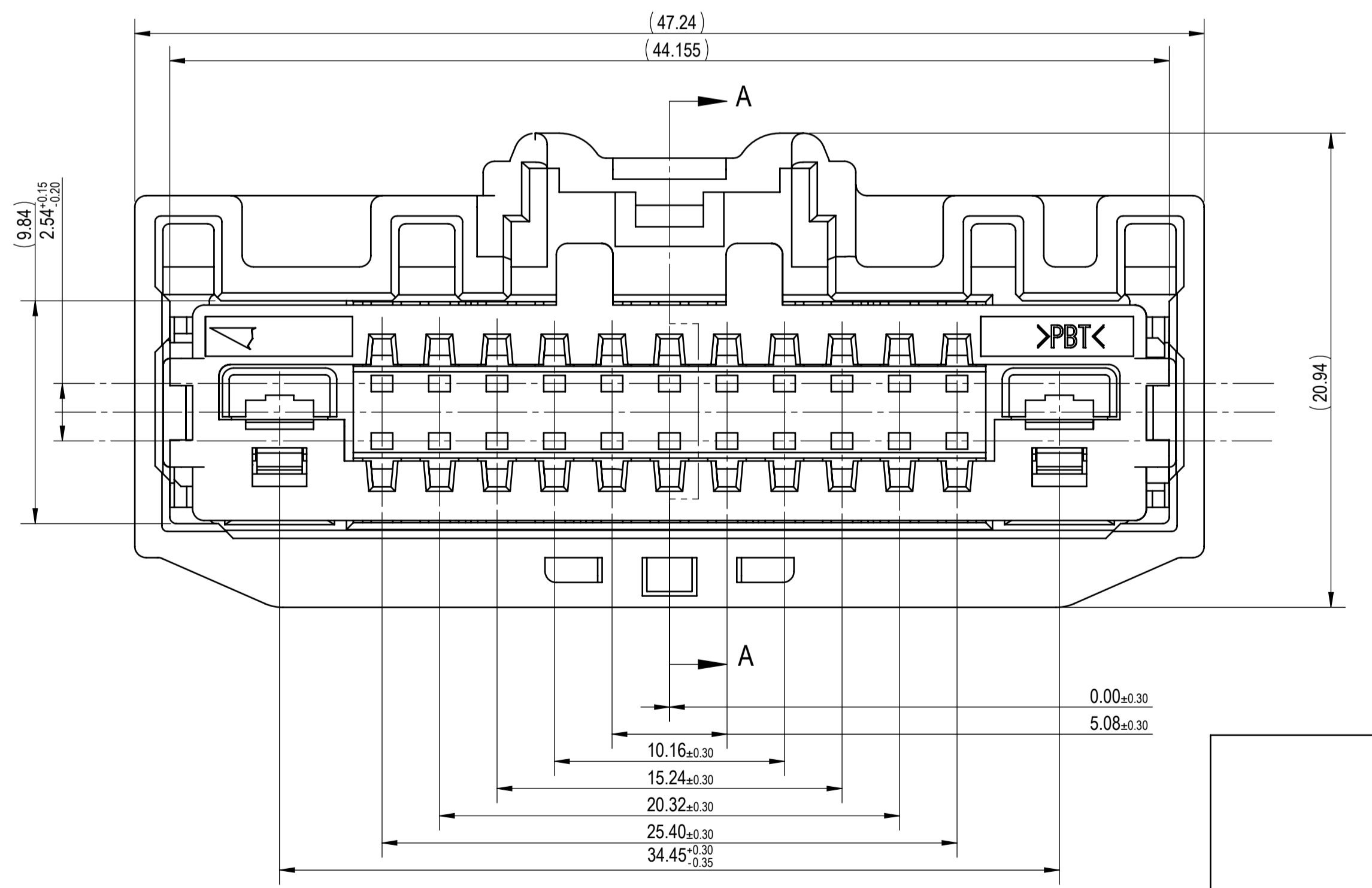
SUB-ASSEMBLY PART NUMBER	NO.	PART NUMBER	PART NAME	MATERIAL	COLOR	QUANTITY
7288-3682-30	①	7188-3682-30	24P HYBRID (22P TYCO GEN Y 0.64 + 2P YESC 2.8) UNSEALED MALE CONNECTOR HOUSING	PA66-GF35	BLACK	1
	②	7172-0999	24P HYBRID (22P TYCO GEN Y 0.64 + 2P YESC 2.8) UNSEALED MALE CONNECTOR TPA	PBT	NATURAL	1



- NOTES:
- PARTS MUST BE PURCHASED FROM YAZAKI.
 - PARTS MUST BE FREE OF FLASH AND IMPERFECTIONS THAT AFFECT FUNCTION.
 - APPLICABLE TERMINALS: SEE DRAWING C-1924275 (0.64 TYCO GEN-Y UNSEALED)
MAX WIRE OD: 2.09mm (CAVITIES 2-12, 14-24)
SEE DRAWING 7114-4110-02-R (2.8 YESC UNSEALED)
MAX WIRE OD: 3.70mm (CAVITIES 1, 13)
 - MATING PART NUMBER: 7287-2047-30
 - PART SATISFIES TEST USCAR-2, REV. 6, FEBRUARY 2013, (T2/V1/S1) WITH THE FOLLOWING EXCEPTIONS:
SECTION 5.4.1 PUSH THROUGH FORCE - TESTED PER USCAR-2 REV. 5
SECTION 5.4.8 CONNECTOR DROP TEST - TPA BECAME DISLODGED
 - PART TO COMPLY WITH YPES-31-038 REQUIREMENTS.
 - THIS DIMENSION SHOWS THE PRE-SET POSITION OF THE TPA.
 - THIS DRAWING IS TO BE USED FOR INTERNAL YAZAKI PSW SUBMISSION.
 - CLIP SLOT: 11mm CLIP SLOT. (BASED ON USCAR 11mm CLIP SLOT, EWCAP-005-11, REV C)
 - HANDLING MANUAL NUMBER: YPES-15-1321E



SECTION A-A



LET	DATE	REVISION RECORD	NO.	CHKD
-	07-03-2018	NEW	C18-A605	DM

GENERAL TOLERANCE											
A	±0.15	±0.20	±0.30	±0.50	±0.75	±0.20	±0.30	±0.50	±2.50	±3°	0.1
B	±0.20	±0.30	±0.55	±0.95	±1.40	±0.20	±0.30	±0.50	±2.50	±3°	0.1
C	±0.30	±0.50	±0.80	±1.40	±2.00	±0.20	±0.30	±0.50	±2.50	±3°	0.15
SPECIFIED											MASS (16.55) g

CUSTOMER		MATERIAL SPEC.		TREAT. & FIN.	
CUSTOMER PART NO.	CUSTOMER DWG NO.	SEE TABLE 1	N/A		
OFFICE	YNA	TRIAL PART NO.	NAME 24P (22P TYCO GEN Y 0.64 + 2P YESC 2.8)		
VENDOR			UNSEALED MALE CONNECTOR SUB-ASSEMBLY		
VENDOR NO.			PART NO.	7288-3682-30	
			CH. CODE		
			DWG NO.	7288-3682-30:R	
			YAZAKI CORPORATION		