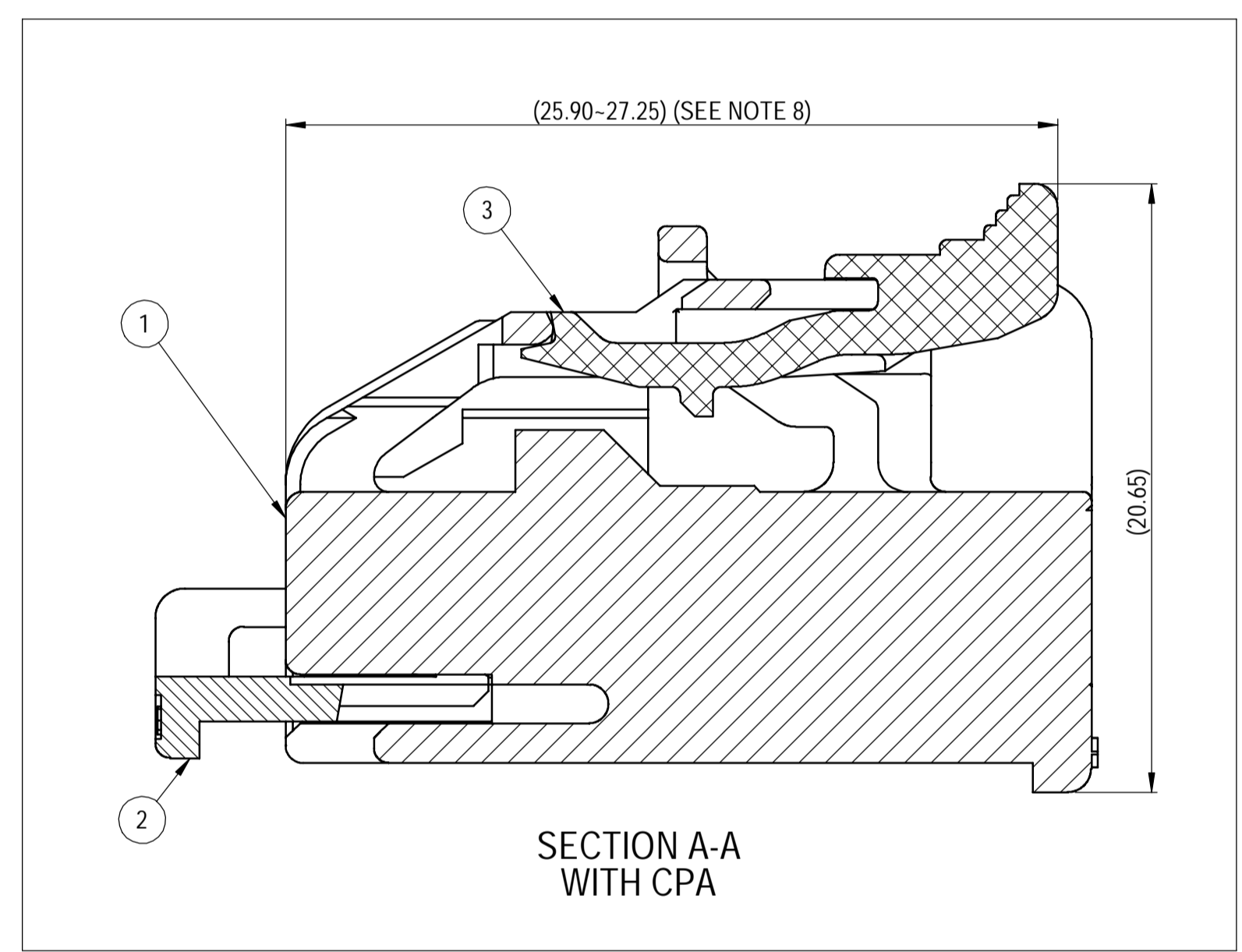
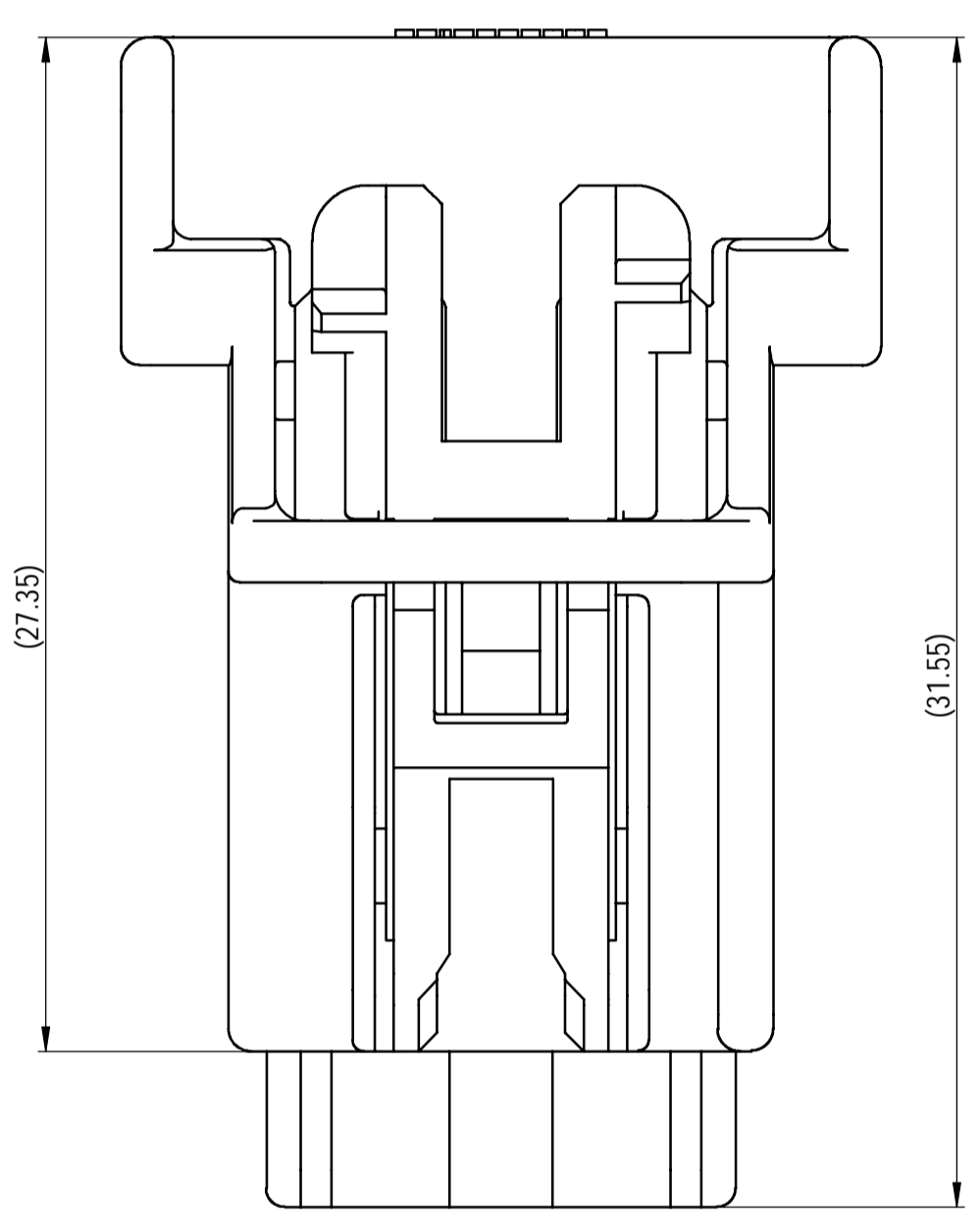
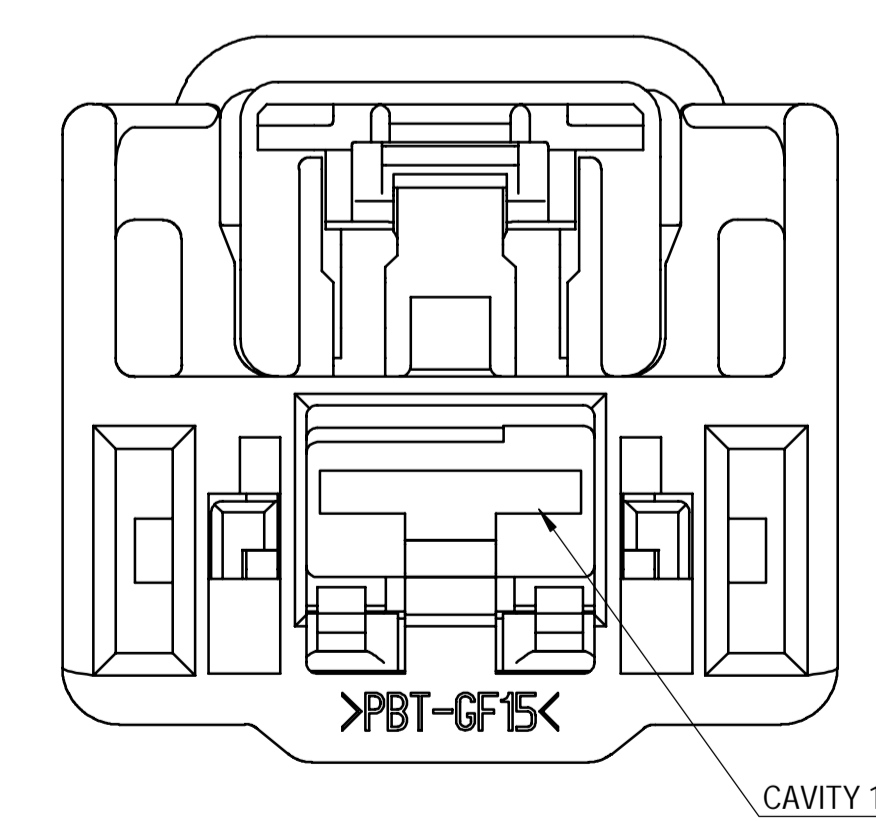
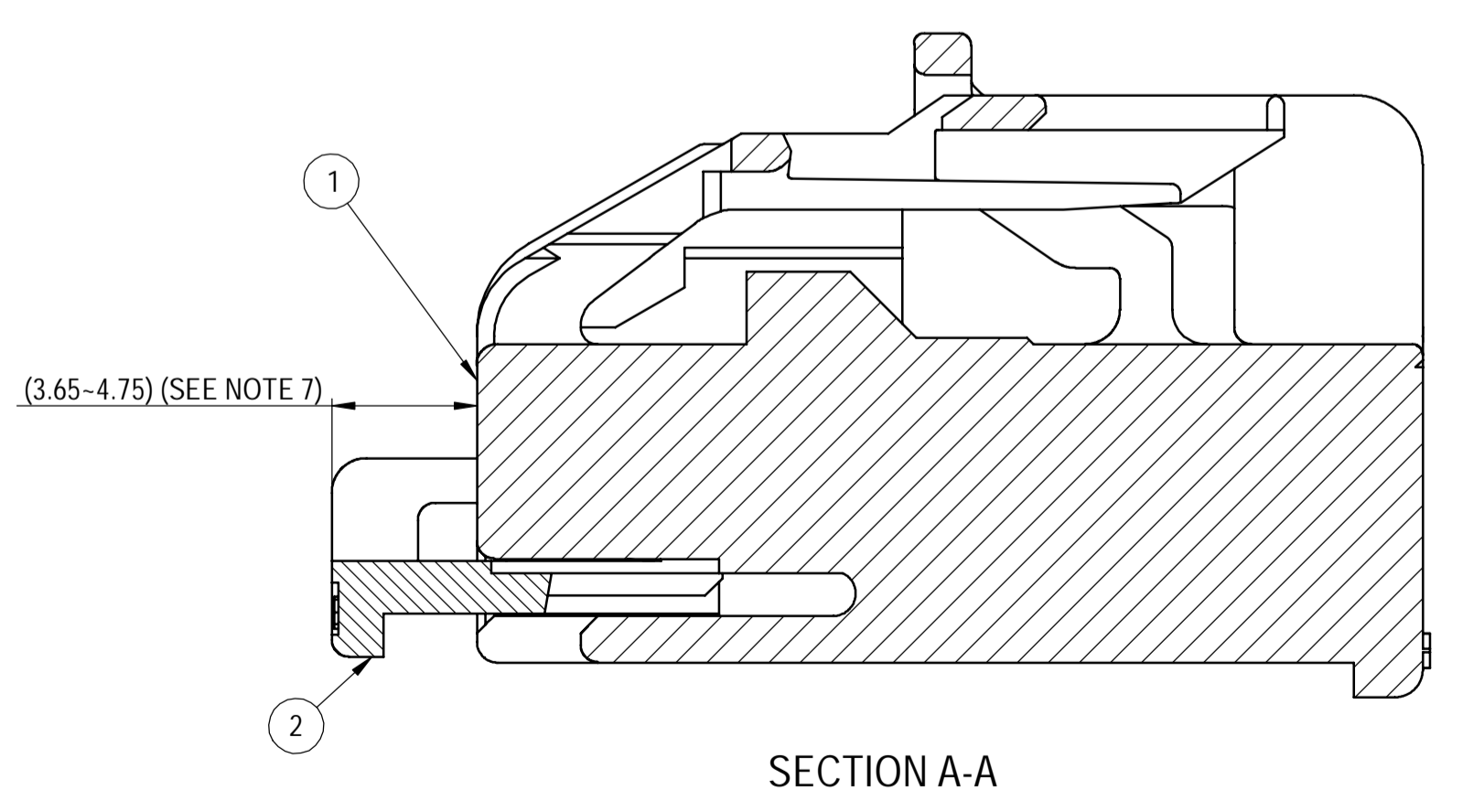
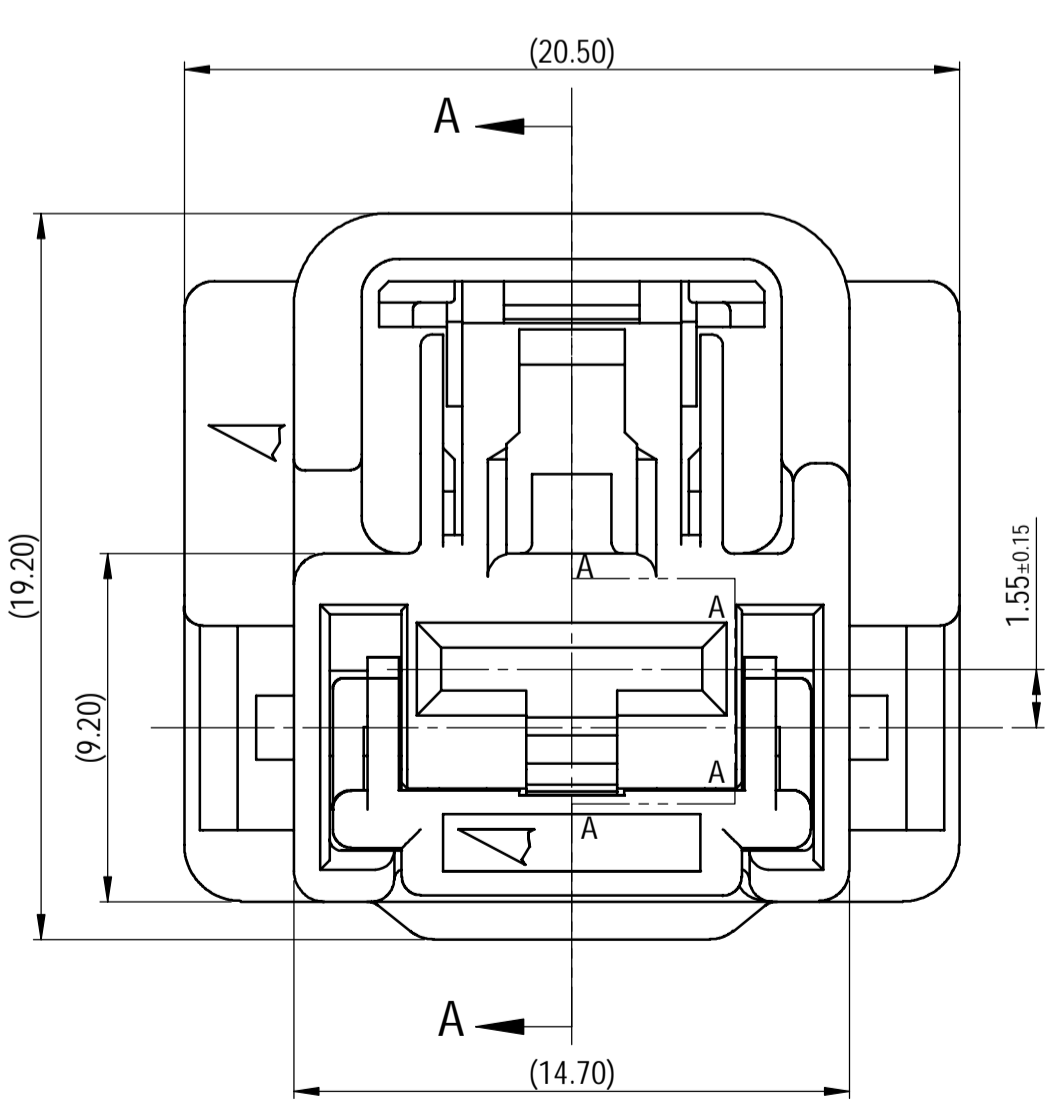


SUB-ASSEMBLY PART NUMBER	NO.	PART NUMBER	PART NAME	MATERIAL	COLOR	MASS(g)	QUANTITY
7287-9357-30	①	7187-9357-30	1P 6.3mm YESC KAIZEN UNSEALED FEMALE CONNECTOR HOUSING	PBT-GF15	BLACK	(4.10)	1
	②	7172-0738	1P 6.3mm YESC KAIZEN UNSEALED FEMALE CONNECTOR TPA	PBT	NATURAL		1
7287-9358-30	①	7187-9357-30	1P 6.3mm YESC KAIZEN UNSEALED FEMALE CONNECTOR HOUSING	PBT-GF15	BLACK	(4.42)	1
	②	7172-0738	1P 6.3mm YESC KAIZEN UNSEALED FEMALE CONNECTOR TPA	PBT	NATURAL		1
	③	7173-2194-50	1P 6.3mm YESC KAIZEN UNSEALED FEMALE CONNECTOR CPA	PBT-GF15	RED		1



- NOTES:
- PARTS MUST BE PURCHASED FROM YAZAKI.
 - PARTS MUST BE FREE OF FLASH AND IMPERFECTIONS THAT AFFECT FUNCTION.
 - APPLICABLE TERMINAL: SEE 7116-4120-02.R DRAWING (YESC 6.3 UNSEALED)
MAX WIRE OD: 4.90mm
 - MATING PART NUMBER: 7286-9357-30
 - PART SATISFIES GMW3191, DEC. 2007 (TC2, SC1, VC1) WITH THE FOLLOWING EXCEPTIONS:
SECTION 4.12.1 FEMALE TPA CLOSING FORCE WITH CORRECTLY ASSEMBLED TERMINAL: 37N MAX.
SECTION 4.12.5 CPA UNLOCKING FORCE: 10N MIN-11.9N MAX.
SECTION 4.26/4.20 CORROSION- DIELECTRIC STRENGTH
 - PART TO COMPLY WITH YPES-31-038 REQUIREMENTS.
 - THIS DIMENSION SHOWS THE PRE-SET POSITION OF THE TPA.
 - THIS DIMENSION SHOWS THE PRE-SET POSITION OF THE CPA.
 - THIS DRAWING IS TO BE USED FOR INTERNAL YAZAKI PSW SUBMISSION.
 - HANDLING MANUAL NUMBER: YPES-15-599E
 - CONNECTOR IS CAPABLE OF ACCEPTING A DRESS COVER.



LET	DATE	REVISION RECORD	NO.	CHKD
-	06-06-2017	NEW	C17-A608	A.P.

GENERAL TOLERANCE											ANGLE	ECCENT
A	±0.15	±0.2	±0.3	±0.5	±0.75	±0.2	±0.3	±0.5	±2.5	±3°	0.1	
B	±0.2	±0.3	±0.55	±0.95	±1.4					±3°	0.1	
©	±0.3	±0.5	±0.8	±1.4	±2					±3°	0.15	
SPECIFIED											MASS	SEE TABLE

CUSTOMER	CUSTOMER PART NO.	CUSTOMER DWG NO.	MATL SPEC.	SEE TABLE	TREAT. & FIN.	N/A
OFFICE	YNA	TRIAL PART NO.	NAME	1P 6.3 YESC KAIZEN UNSEALED		
VENDOR			FEMALE CONNECTOR SUB ASSEMBLY			
VENDOR NO.			PART NO.	7287-9357-30, ETC.		
DWG TYPE	R	DWG SOURCE	DWG DATE	UNIT	SCL	ANGLE
APPROVED	CHECKED	CHECKED	DESIGN	DRAWN	DWG NO.	
			JAMES LITTEK	ALISON PANEK	7287-9357-30-R	
			02-02-2012	08-02-2017	SET DWG NO.	
YAZAKI CORPORATION						