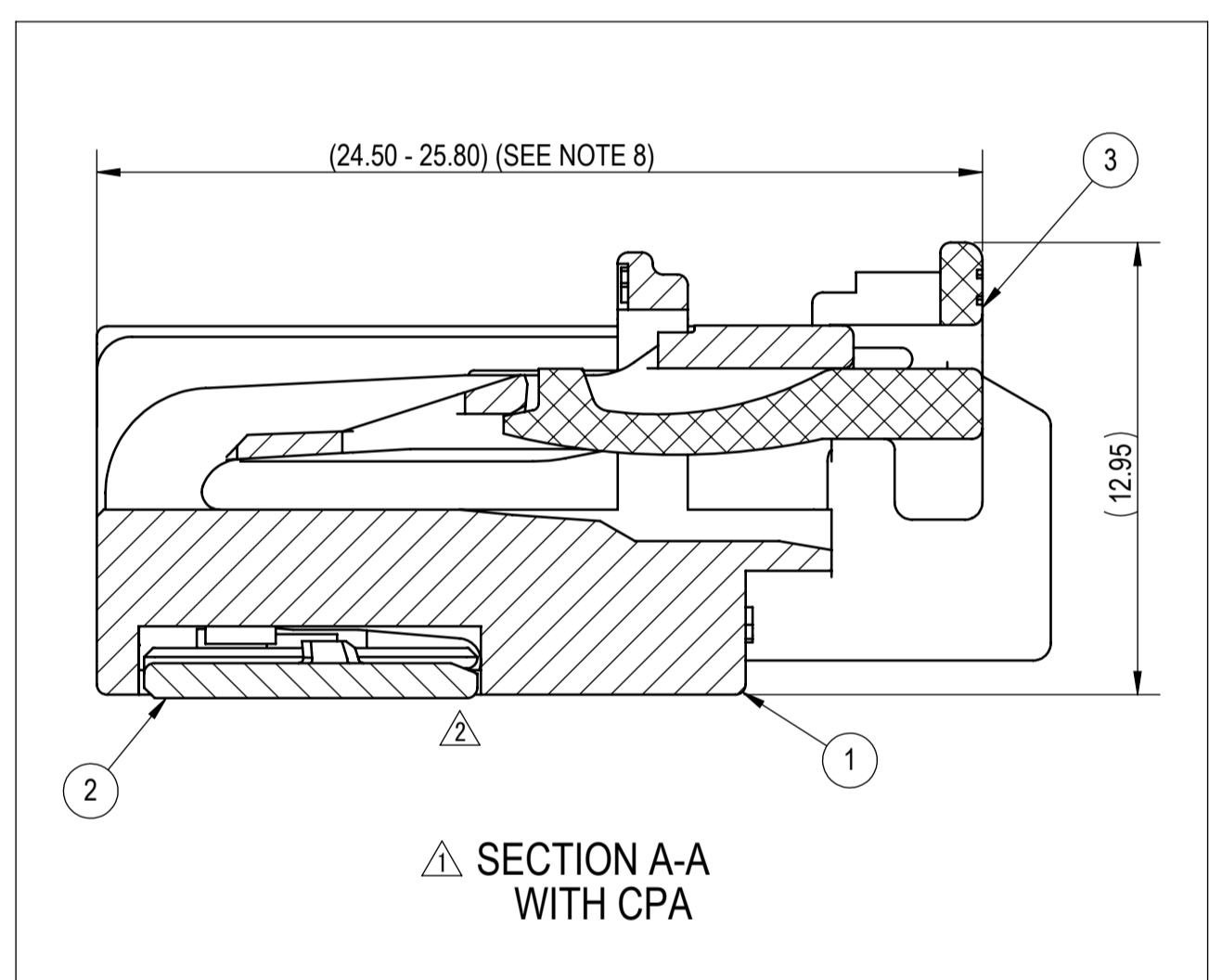
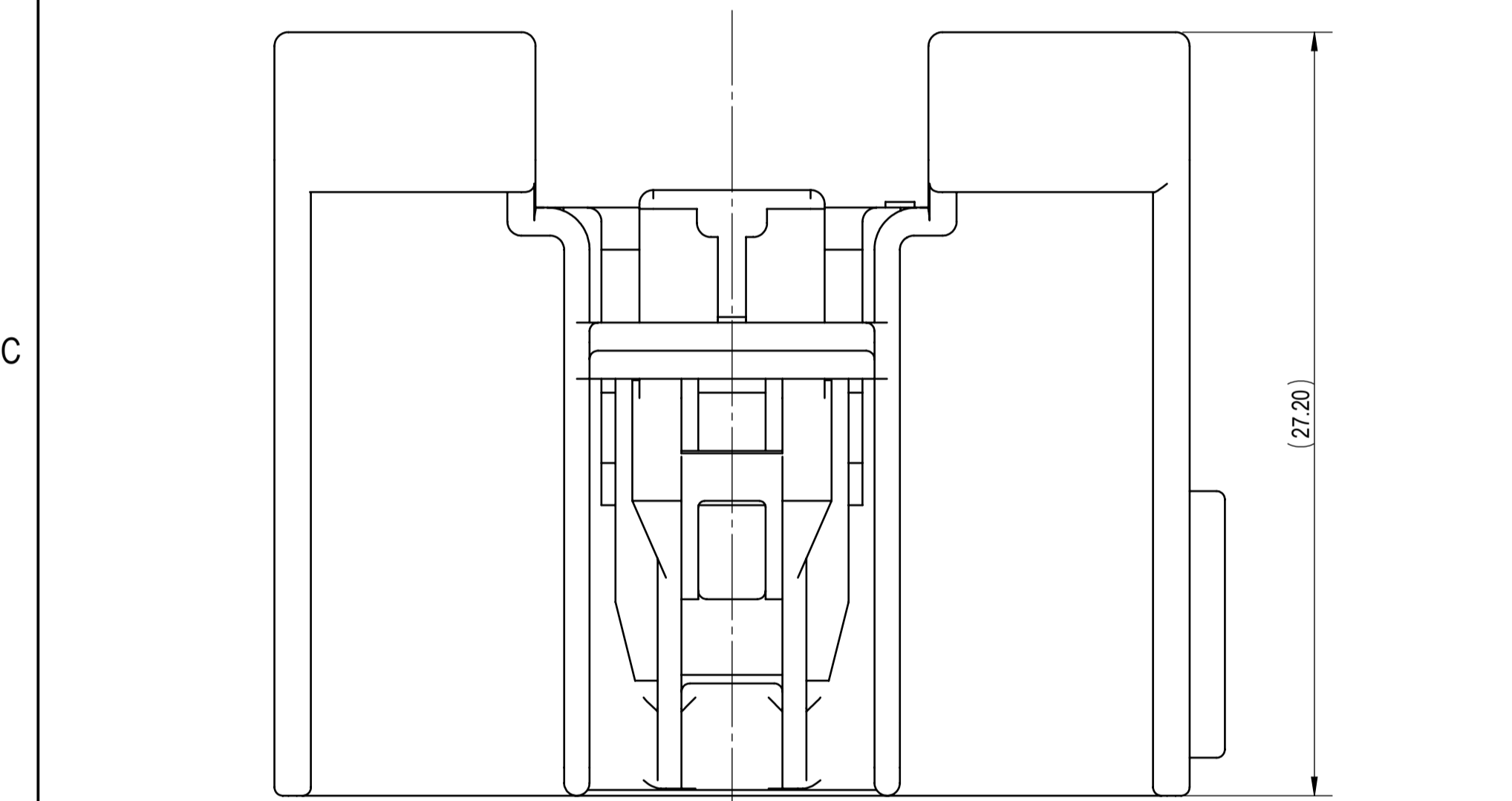
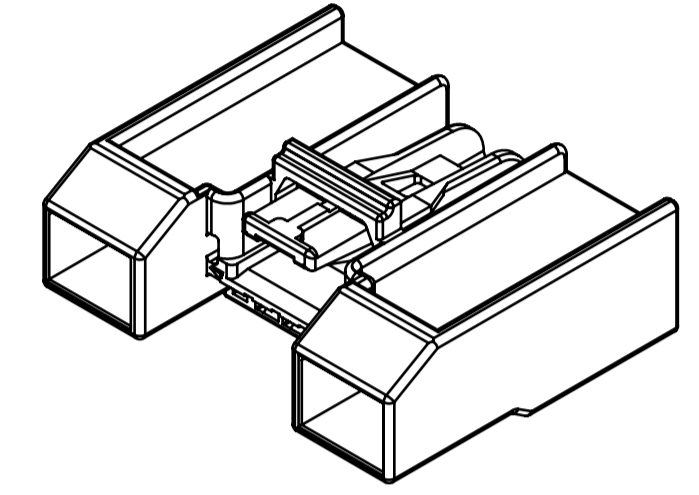
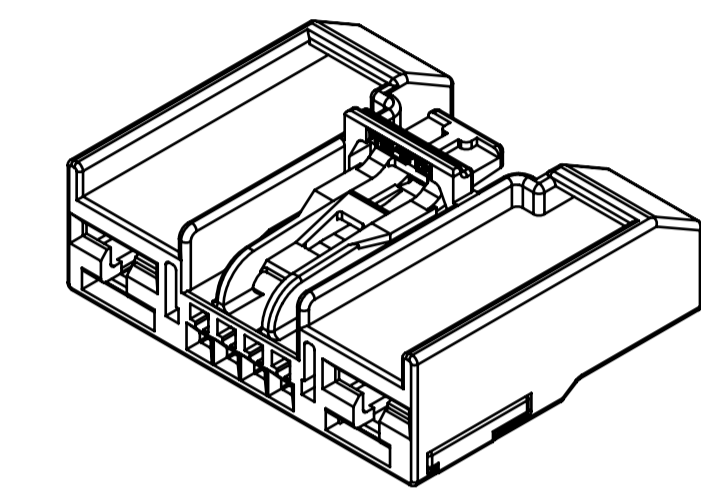
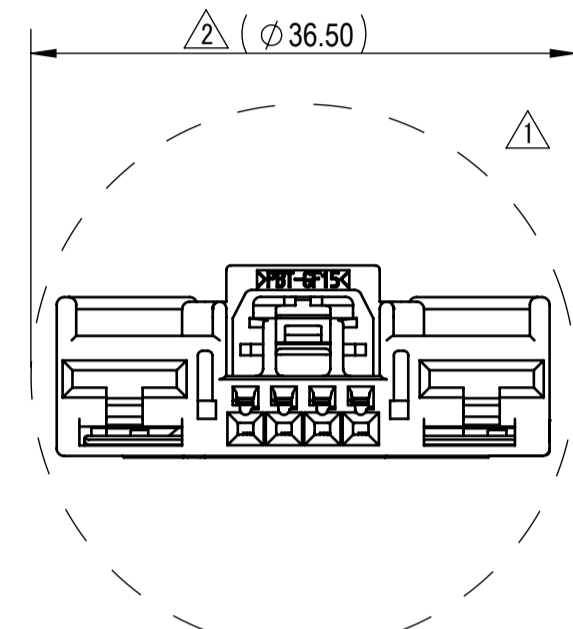
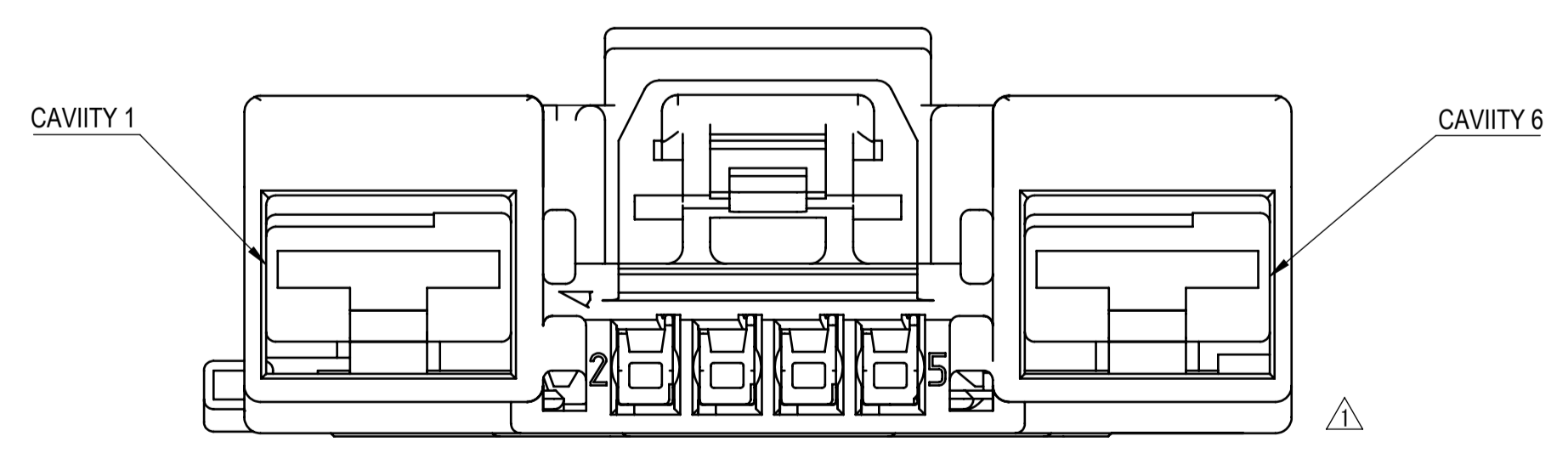
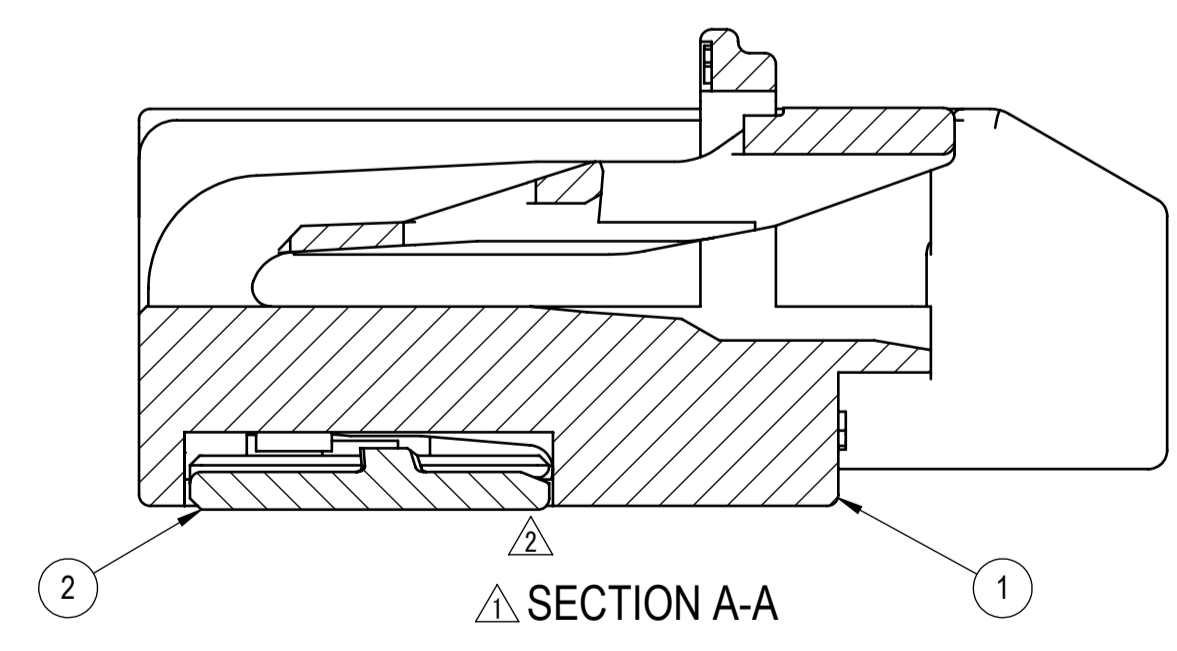
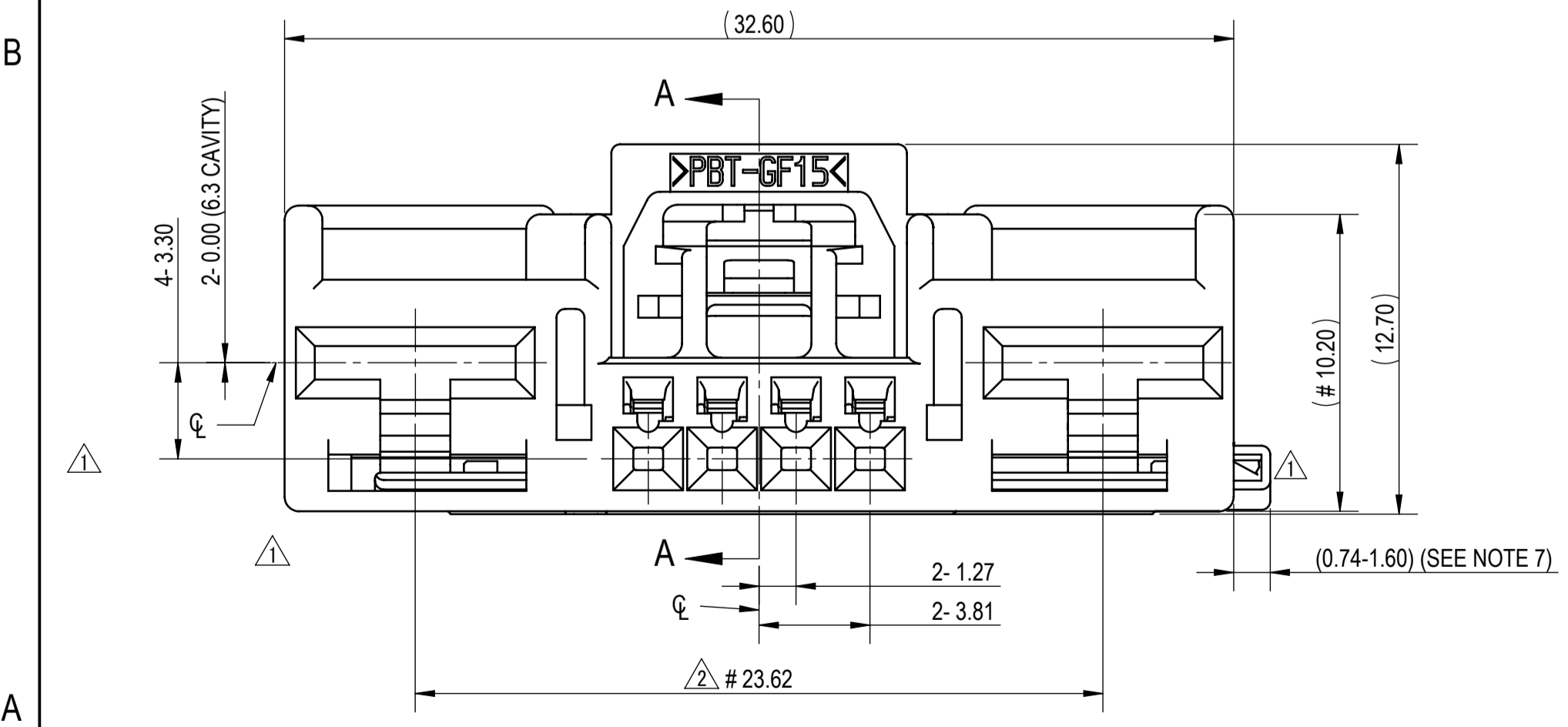


SUB-ASSEMBLY PART NUMBER		NO.	PART NUMBER	PART NAME	MATERIAL	COLOR	QUANTITY
SEE TABLE 2		①	SEE TABLE 2	6P (4P×0.64 GEN Y + 2P×6.3 YESC) UNSEALED FEMALE HOUSING	PBT-GF15	SEE TABLE 2	1
		②	7172-0737	6P (4P×0.64 GEN Y + 2P×6.3 YESC) UNSEALED FEMALE ISL	PA66-GF35	NATURAL	1
SEE TABLE 2		①	SEE TABLE 2	6P (4P×0.64 GEN Y + 2P×6.3 YESC) UNSEALED FEMALE HOUSING	PBT-GF15	SEE TABLE 2	1
		②	7172-0737	6P (4P×0.64 GEN Y + 2P×6.3 YESC) UNSEALED FEMALE ISL	PA66-GF35	NATURAL	1
		③	7172-1339-50	6P (4P×0.64 GEN Y + 2P×6.3 YESC) UNSEALED CPA	PBT-GF30	RED	1

SUB-ASSEMBLY PART NUMBER		HOUSING PART NUMBER	KEYWAY	CPA	COLOR	MASS (g)
7287-9355-30		7187-9355-30	A	N	BLACK	(4.32)
7289-7139-30		7187-9355-30	A	Y	BLACK	(4.65)
△ 7298-4407-40		7198-4407-40	B	N	LIGHT GRAY	(4.32)
△ 7298-4408-40		7198-4407-40	B	Y	LIGHT GRAY	(4.65)



- NOTES:
- PARTS MUST BE PURCHASED FROM YAZAKI.
 - PARTS MUST BE FREE OF FLASH AND IMPERFECTIONS THAT AFFECT FUNCTION.
 - APPLICABLE TERMINAL: SEE 7116-7277-02:R DRAWING (GEN Y 0.64) OR C-1924955 DRAWING (TYCO GEN Y 0.64)
MAX WIRE OD: 2.08mm (CAVITIES 2-5)
MAC WIRE OD: 4.90 (CAVITIES 1 & 6)
SEE 7116-4120-02:R DRAWING (YESC 6.3)
 - MATING PART NUMBER: SEE 7287-9355-30-A
 - PART SATISFIES GMW3191, DEC. 2007. (T2V1/S1/MF2)
 - PART TO COMPLY WITH YPES-31-038 REQUIREMENTS.
 - THIS DIMENSION SHOWS THE PRE-SET POSITION OF THE ISL.
 - THIS DIMENSION SHOWS THE PRE-SET POSITION OF THE CPA.
 - THIS DRAWING IS TO BE USED FOR INTERNAL YAZAKI PSW SUBMISSION.
 - HANDLING MANUAL NUMBER: YPES-15-1320E
 - # INDICATES THE DIMENSION IS DIVIDED EVENLY ABOUT THE CENTERLINE.



DATE	REVISION RECORD	NO.	CHKD
09-11-2019	REDRAWN TO LATEST STANDARDS. ISL SHAPE CHANGED, ADDED KEYWAY B CONFIGURATIONS & REVISED/ADDED NOTE	C19-A810	MS
05-20-2016	UPDATED NOTES & LAYOUT ADDITION OF CPA	C16-A381	DZ
08-30-2012	SHORT DESCRIPTION	C12-A764	MMR

GENERAL TOLERANCE											
	10MAX	50MAX	100MAX	250MAX	250OVR	R5 MAX	R10 MAX	R20 MAX	R20 OVR	ANGLE	ECCENT
A	±0.15	±0.20	±0.30	±0.50	±0.75					±3°	0.1
B	±0.20	±0.30	±0.55	±0.95	±1.40	±0.20	±0.30	±0.50	±2.50	±3°	0.1
C	±0.30	±0.50	±0.80	±1.40	±2.00					±3°	0.15

MASS SPECIFIED SEE TABLE 2

CUSTOMER		MATERIAL		TREAT.	
CUSTOMER PART NO.	CUSTOMER DWG NO.	SPEC.	SEE TABLE	& FIN.	N/A
		NAME		6P (4P×0.64 GEN Y+ 2P×6.3 YESC) UNSEALED	
		NAME		FEMALE CONNECTOR SUB-ASSEMBLY	
		PART NO.		7287-9355-30, ETC.	
		CH. CODE		7287-9355-30:R	
		DWG NO.		7287-9355-30:R	
		DRAWN		YAZAKI CORPORATION	