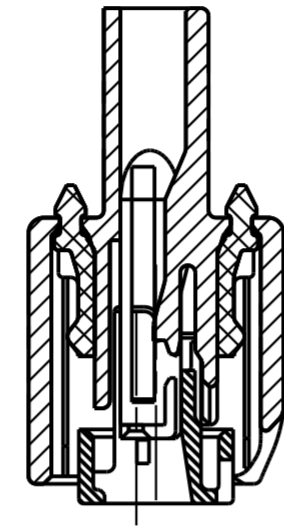
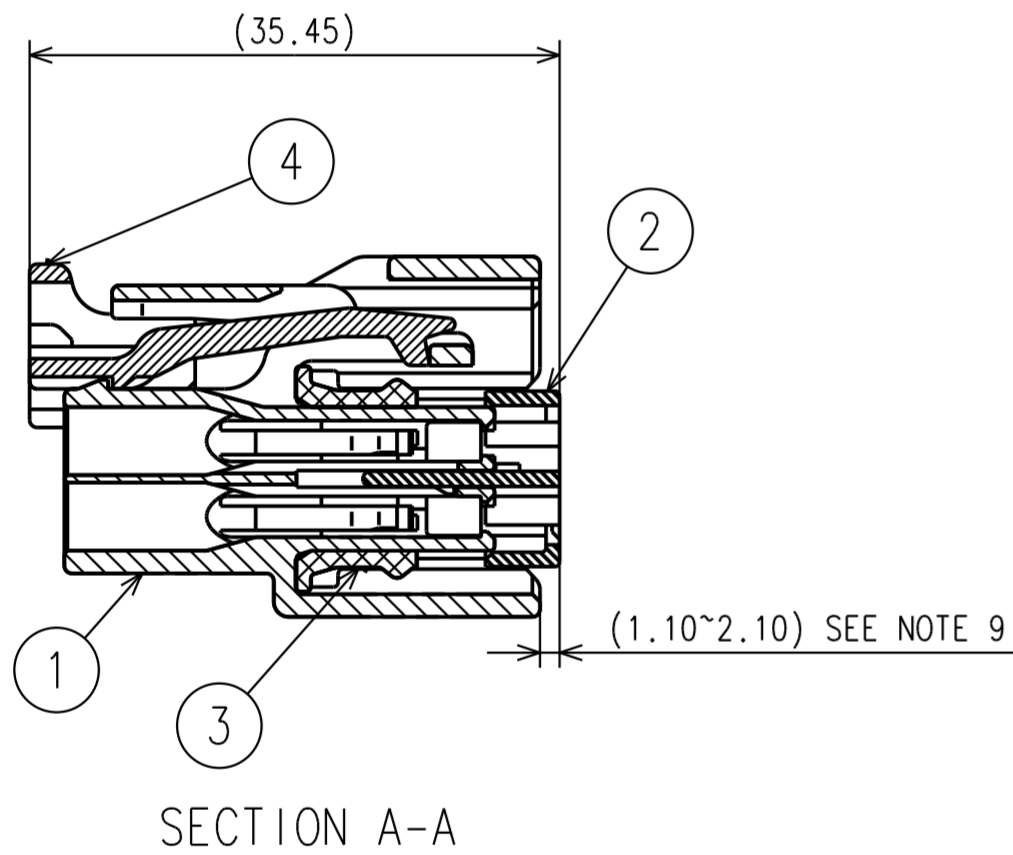


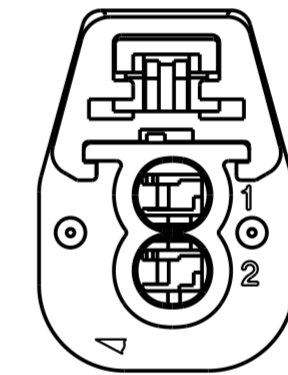
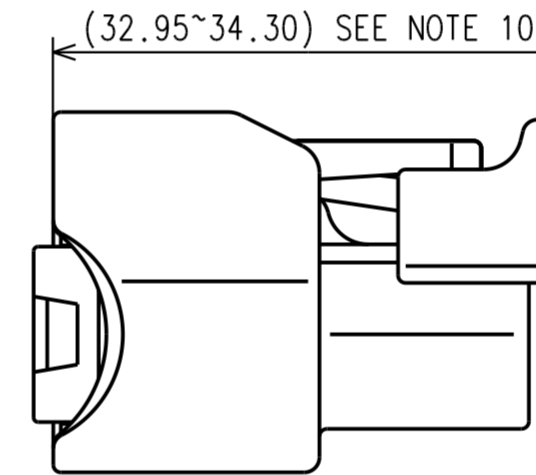
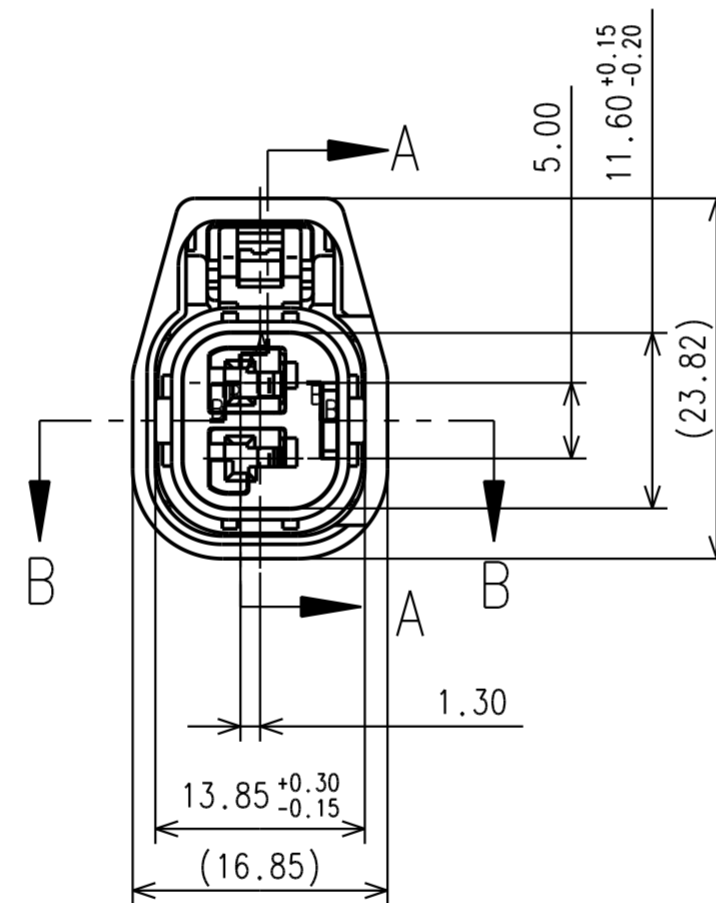
SUB ASSEMBLY PART NUMBER	NO.	PART NUMBER	PART NAME	MATERIAL	COLOR	QUANTITY
7287-3616-10	①	7187-3616-10	2P 1.5 YESC SEALED FEMALE HOUSING	HPA	DARK GREY	1
	②	7158-4269	2P 1.5 YESC SEALED FEMALE TPA	HPA	NATURAL	1
	③	7137-2795-50	2P 1.5 YESC INTERFACE SEAL	SILICONE	RED	1
	④	7158-8090-50	2P 1.5 YESC SEALED CPA	HPA	RED	1



SECTION B-B



SECTION A-A



NOTES:

- PARTS MUST BE PURCHASED FROM YAZAKI.
- PARTS MUST BE FREE OF FLASH AND IMPERFECTIONS THAT AFFECT FUNCTION.
- APPLICABLE TERMINAL: SEE 7116-4102-02:R DRAWING. (1.5 YESC)
- APPLICABLE WIRE SEAL: SEE 7158-3030-50:R DRAWING. (1.5 YESC)
- APPLICABLE CAVITY PLUG: SEE 7158-3032-60:R DRAWING. (1.5 YESC)
- MATING PART NUMBER: MATES TO DEVICE (USCAR FUEL INJECTOR OR EQUIVALENT)
- PART DESIGNED TO SATISFY USCAR, REVISION A, AUGUST 1995, CLASS 3 AND SECTIONS 5.4.2 AND 5.4.6 OF USCAR-2, REVISION 4, MAY 2004, CLASS 3.
- PART TO COMPLY WITH YPES-31-038 REQUIREMENTS.
- THIS DIMENSION SHOWS THE PRESET POSITION OF THE TPA.
- THIS DIMENSION SHOWS THE PRESET POSITION OF THE CPA.
- THIS DRAWING IS TO BE USED FOR INTERNAL YAZAKI PSW SUBMISSION.
- THIS PART IS SIMILAR TO 7283-6430-30 WITH THE EXCEPTION OF CRUSH RIBS AND COLOR OF HOUSING.

LET	DATE	REVISION RECORD	NO.	CHKD
-	06-08-2011	NEW	C11-A393	S.S.

GENERAL TOLERANCE													
	10 MAX	50 MAX	100 MAX	250 MAX	250 OVR	ANGLE	ECCENT	DWG TYPE	DWG SOURCE	DWG DATE	UNIT	SCL	ANGLE
A	± 0.15	± 0.2	± 0.3	± 0.5	± 0.75	± 30'	0.1	R	7287-3616-10:M	06-08-2011	mm	2/1	3
B	± 0.2	± 0.3	± 0.55	± 0.95	± 1.4	± 30'	0.1	APPROVED	CHECKED	CHECKED	DESIGN	DRAWN	
Ⓢ	± 0.3	± 0.5	± 0.8	± 1.4	± 2	± 30'	0.15				MARK	SCOTT	
											TERLAAK	SHAW	
											04.18.08	06-08-2011	

CUSTOMER	CUSTOMER PART NO.	CUSTOMER DWG NO.	MATL. SPEC.	SEE TABLE	TREAT & FIN.
OFFICE	YNA	STDLIB NO.	NAME	2P 1.5 YESC SEALED FEMALE SUB-ASSY (FUEL INJECTOR) W/ CRUSH RIBS	
VENDOR			PART NO.	7287-3616-10	
VENDOR NO.			DWG NO.	7287-3616-10:R	
				YAZAKI CORPORATION	

ISSUE MARK