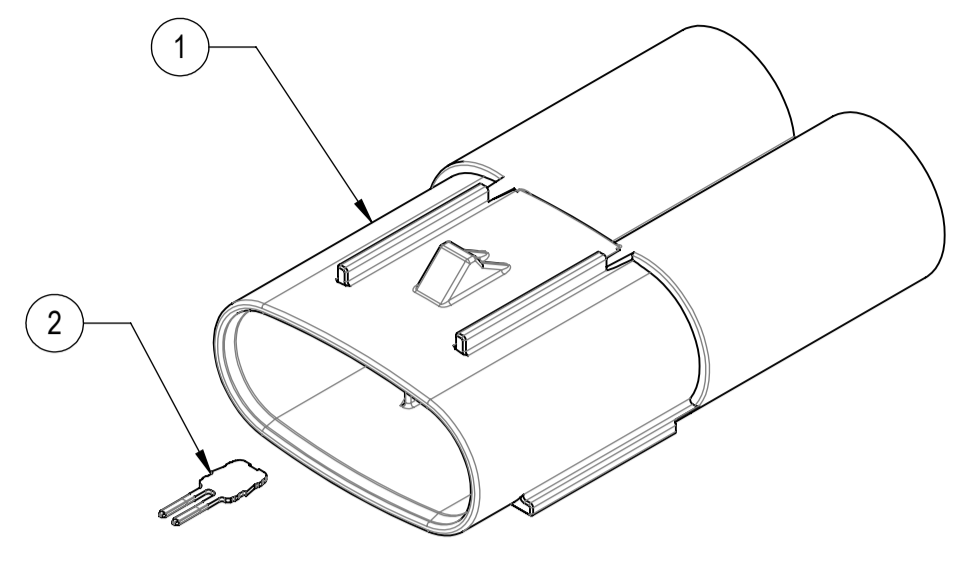
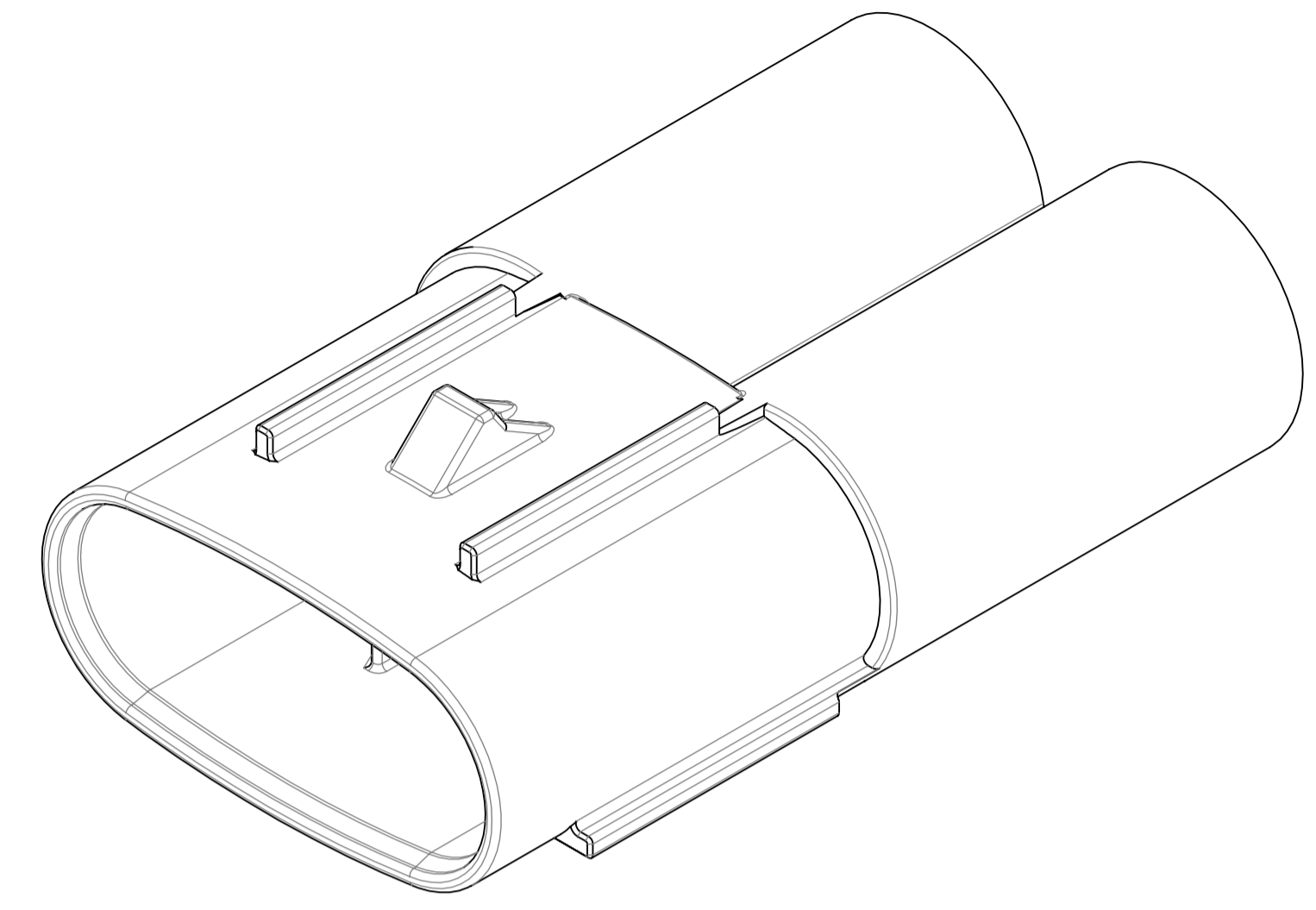


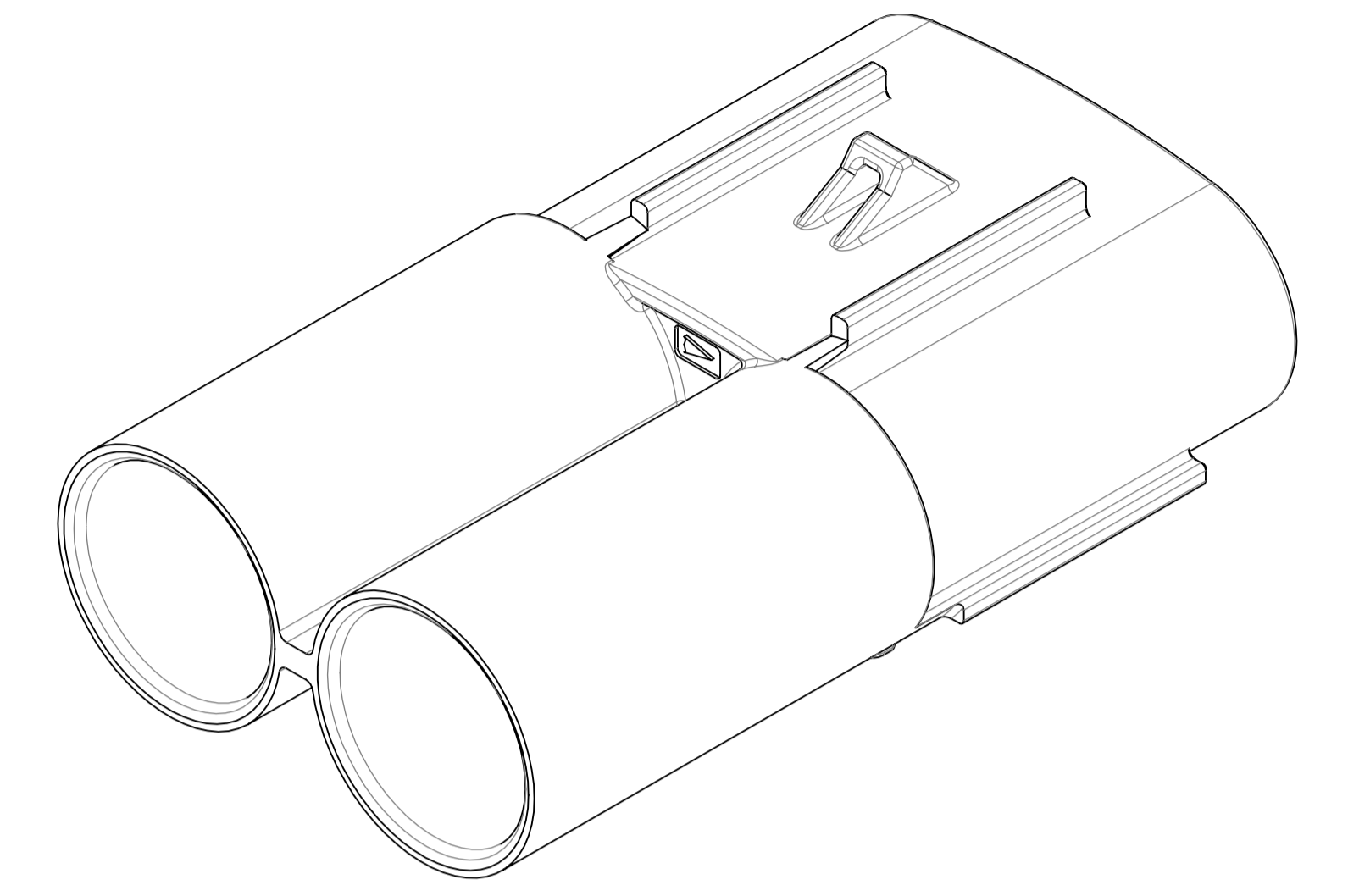
7285-1327
KEYWAY A



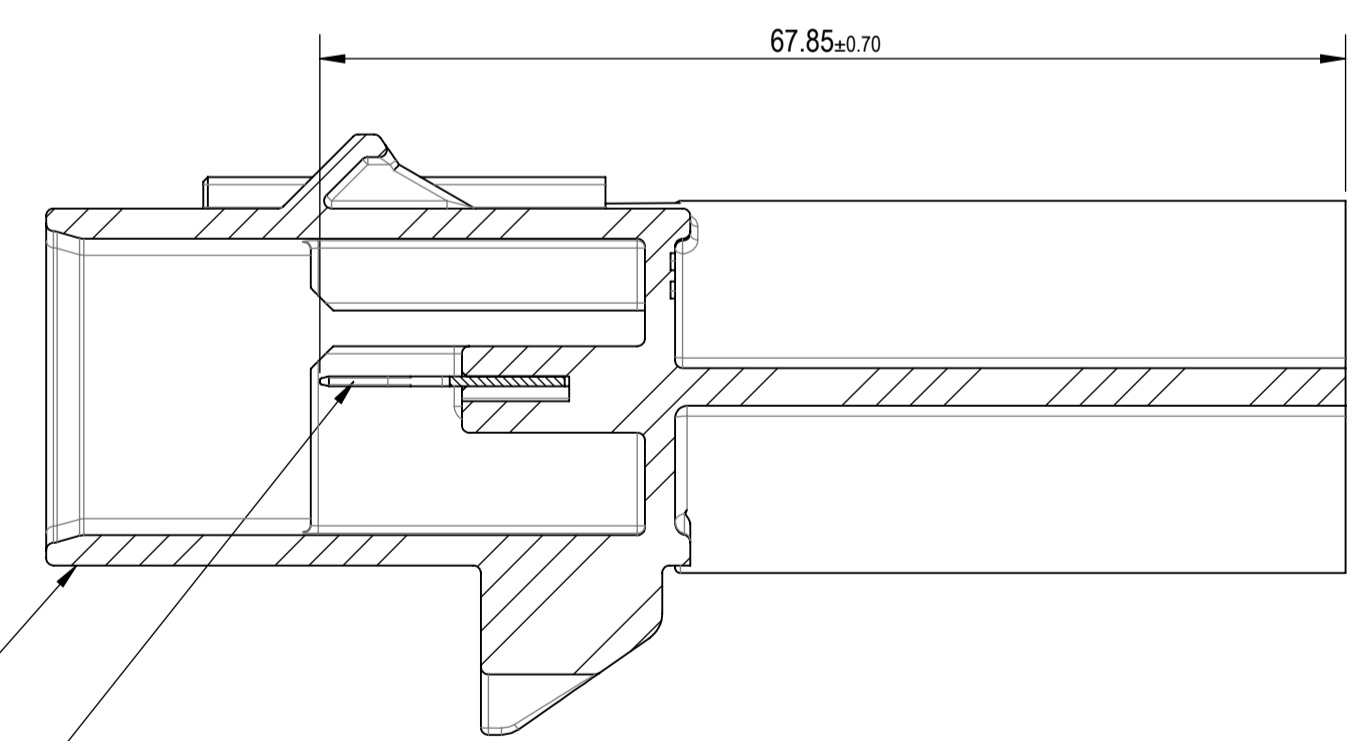
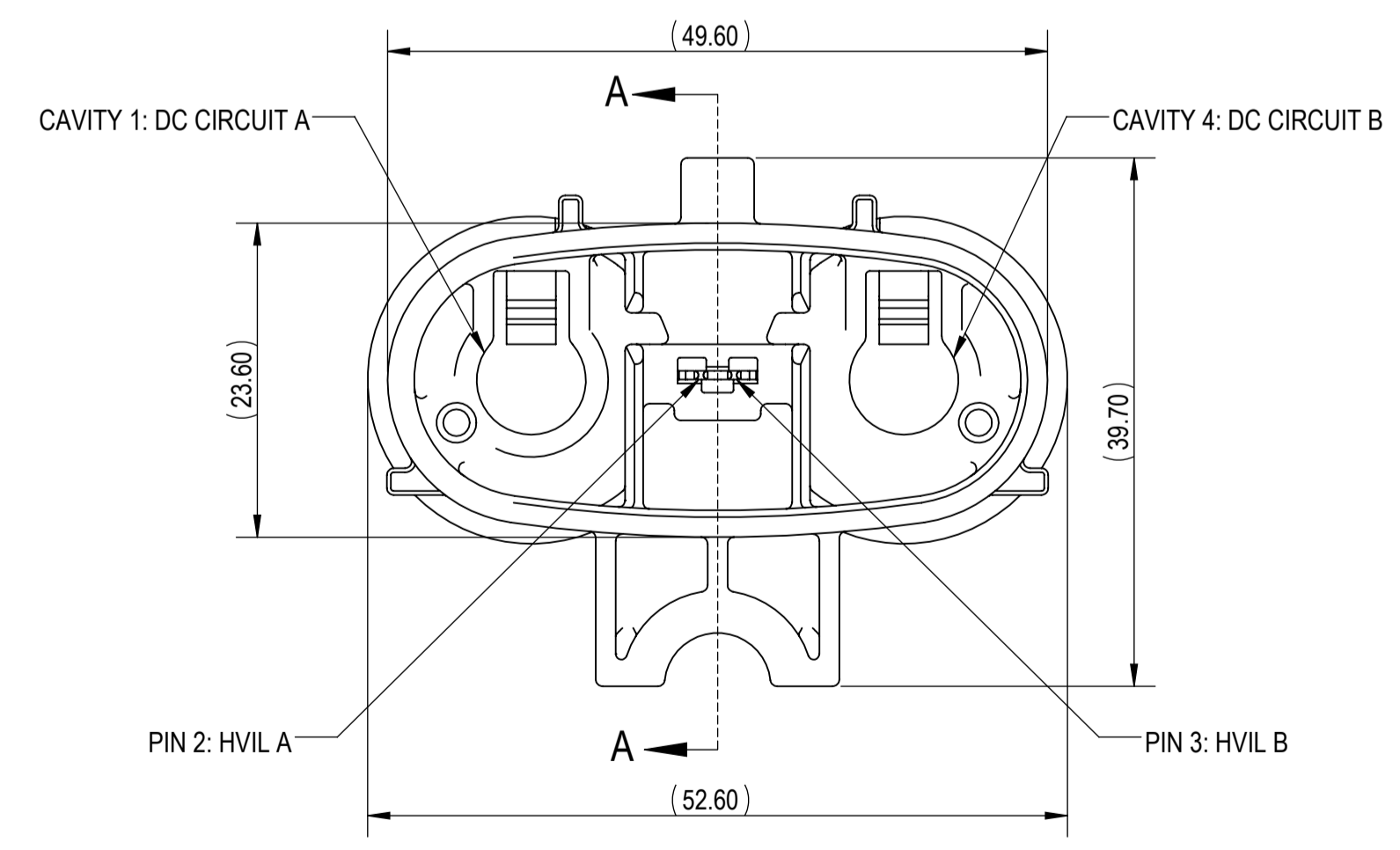
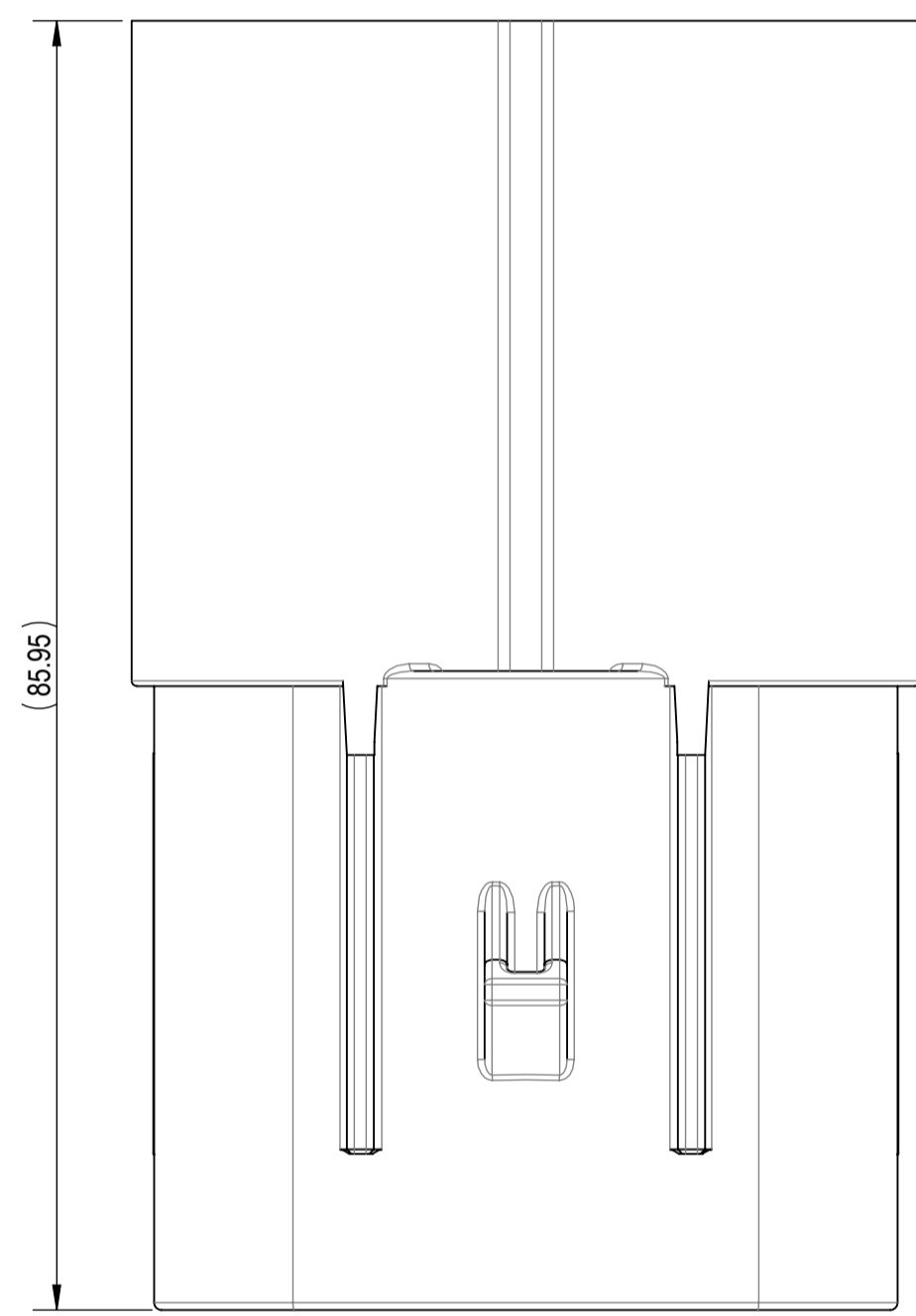
EXPLODED VIEW
(1:1)



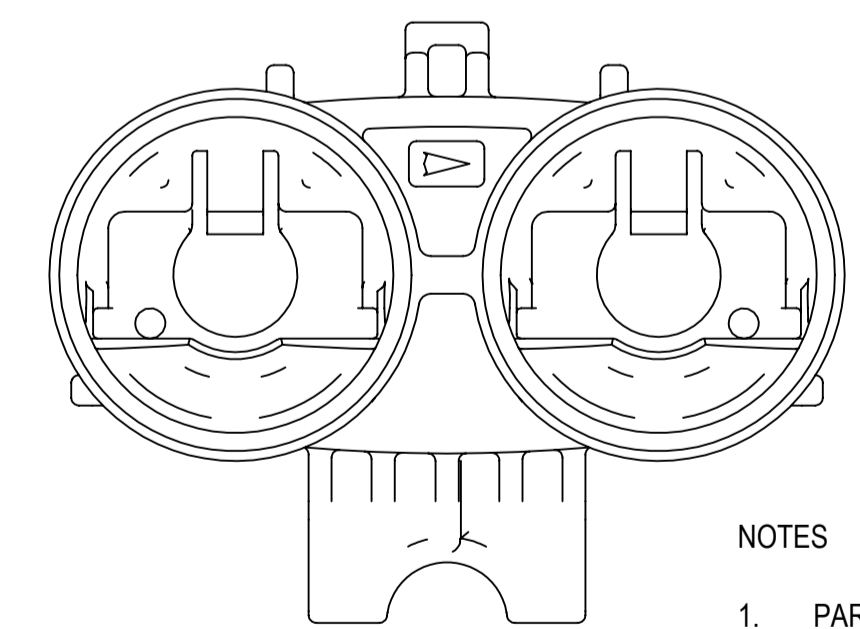
FRONT ISOMETRIC VIEW



REAR ISOMETRIC VIEW



SECTION A-A



NOTES

- PARTS MUST BE PURCHASED FROM YAZAKI.
- PARTS MUST BE FREE OF FLASH AND IMPERFECTIONS THAT AFFECT FUNCTION.
- THIS PART IS A COMPONENT OF: 7285-1098-0W ETC.
- PART SATISFIES USCAR 37, AUG. 2008, (T3, V2, S3) WITH THE FOLLOWING EXCEPTIONS:
5.4.9. CAVITY DAMAGE SUSCEPTIBILITY (TPA SEATED AT 62N MIN.)
- PART TO COMPLY WITH YPES-31-038 REQUIREMENTS.
- THIS DRAWING IS TO BE USED FOR INTERNAL YAZAKI PSW SUBMISSION.

ISSUE MARK

SUB-ASSEMBLY PART NUMBER	NO.	PART NUMBER	PART NAME	MATERIAL	COLOR	QUANTITY
7285-1327	①	7185-0546	2P 8mm SP SEALED 180° MALE CONNECTOR HOUSING	PA66-GF35	NATURAL	1
	②	7185-0165-08	2P 040-III MALE SHORT TERMINAL	Cu ALLOY, Au PLATING	N/A	1

LET	DATE	REVISION RECORD	NO.	CHKD
-	03/14/2019	NEW	C19-A267	M.H.

GENERAL TOLERANCE											
	10MAX	50MAX	100MAX	250MAX	250OVR	R5 MAX	R10 MAX	R20 MAX	R20 OVR	ANGLE	ECCENT
A	±0.15	±0.2	±0.3	±0.5	±0.75					±3°	0.1
B	±0.2	±0.3	±0.55	±0.95	±1.4	±0.2	±0.3	±0.5	±2.5	±3°	0.1
C	±0.3	±0.5	±0.8	±1.4	±2					±3°	0.15

GENERAL TOLERANCE									
	10MAX	50MAX	100MAX	250MAX	250OVR	ANGLE	ECCENT	MASS	
A	±0.15	±0.2	±0.3	±0.5	±0.75	±30'	0.1		
B	±0.2	±0.3	±0.55	±0.95	±1.4	±30'	0.1		
C	±0.3	±0.5	±0.8	±1.4	±2	±30'	0.15		
SPECIFIED								MASS (48.96 g)	

CUSTOMER		CUSTOMER DWG. NO.		MATL SPEC.	SEE NOTES	TREAT. & FIN.	SEE NOTES
CUSTOMER PART NO.		CUSTOMER DWG. NO.		NAME			
OFFICE YNA		TRIAL PART NO.		2P 8mm SP SEALED 180° MALE CONNECTOR SUB-ASSEMBLY			
VENDOR		X41725-A654		PART NO. 7285-1327			
VENDOR NO.				CH. CODE			
DWG TYPE	DWG SOURCE	DWG DATE	UNIT	SCL	ANGLE	DWG NO. 7285-1327:R SET DWG NO.	
R	7285-1327.M/0	05/06/2019	mm	2:1	3		
APPROVED	CHECKED	CHECKED	DESIGN	DRAWN	YAZAKI CORPORATION		
			A. SAMPSON	K. PAKRAVAN			
			11/26/2018	05/06/2019			