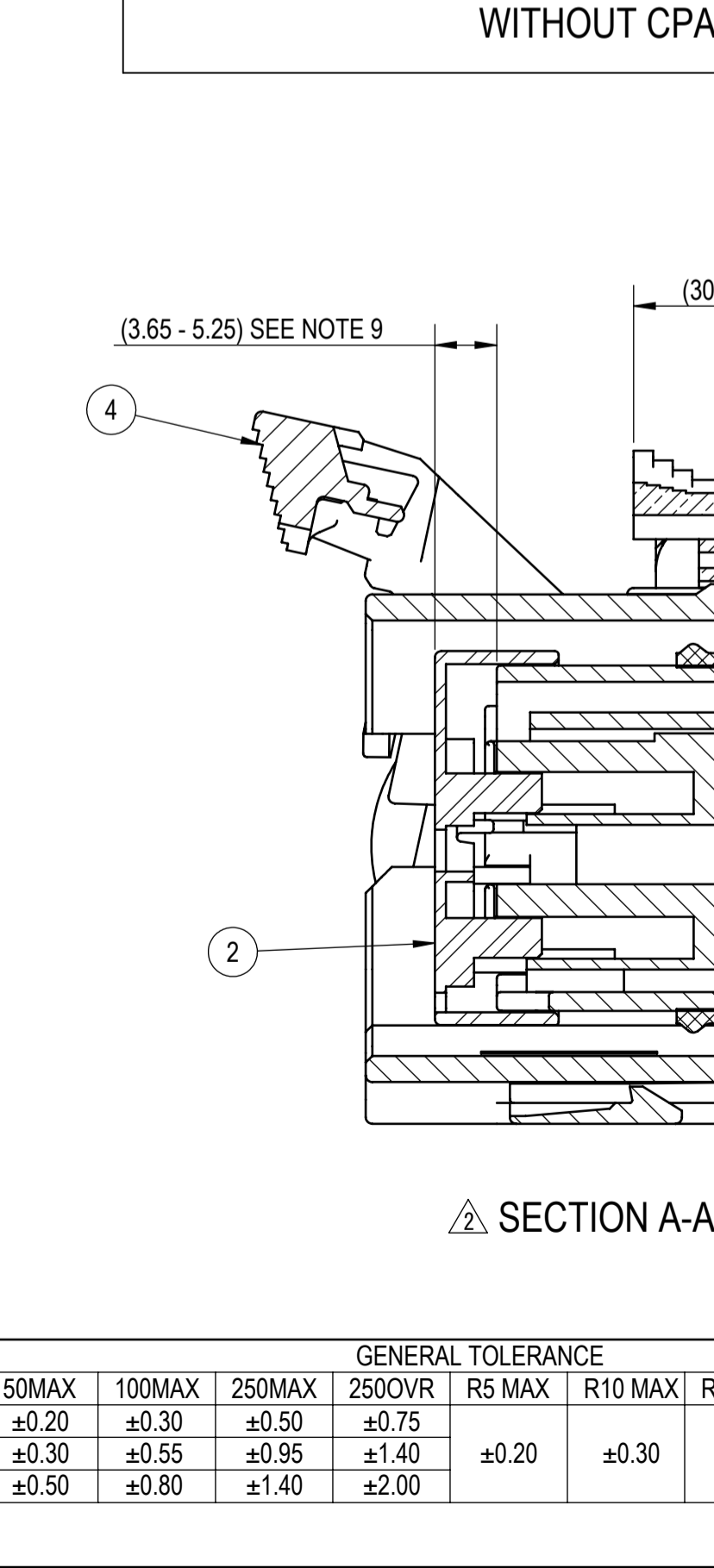
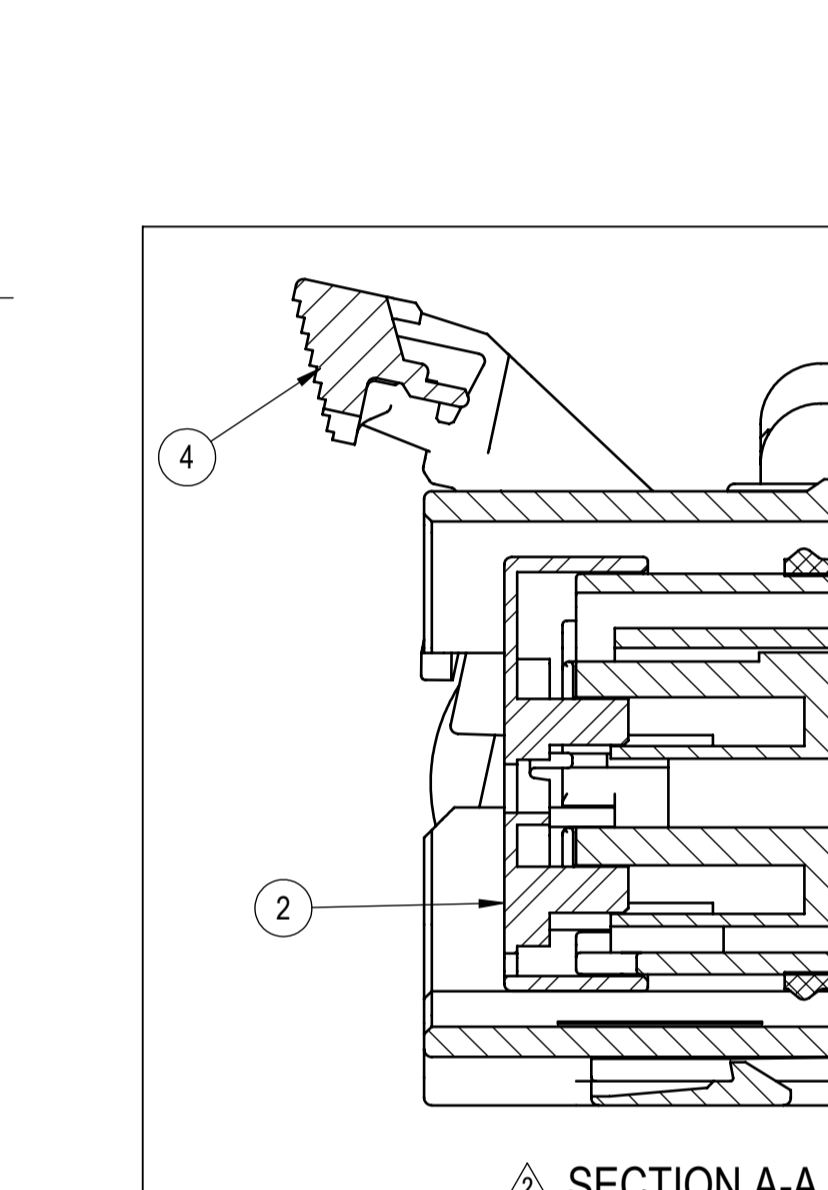
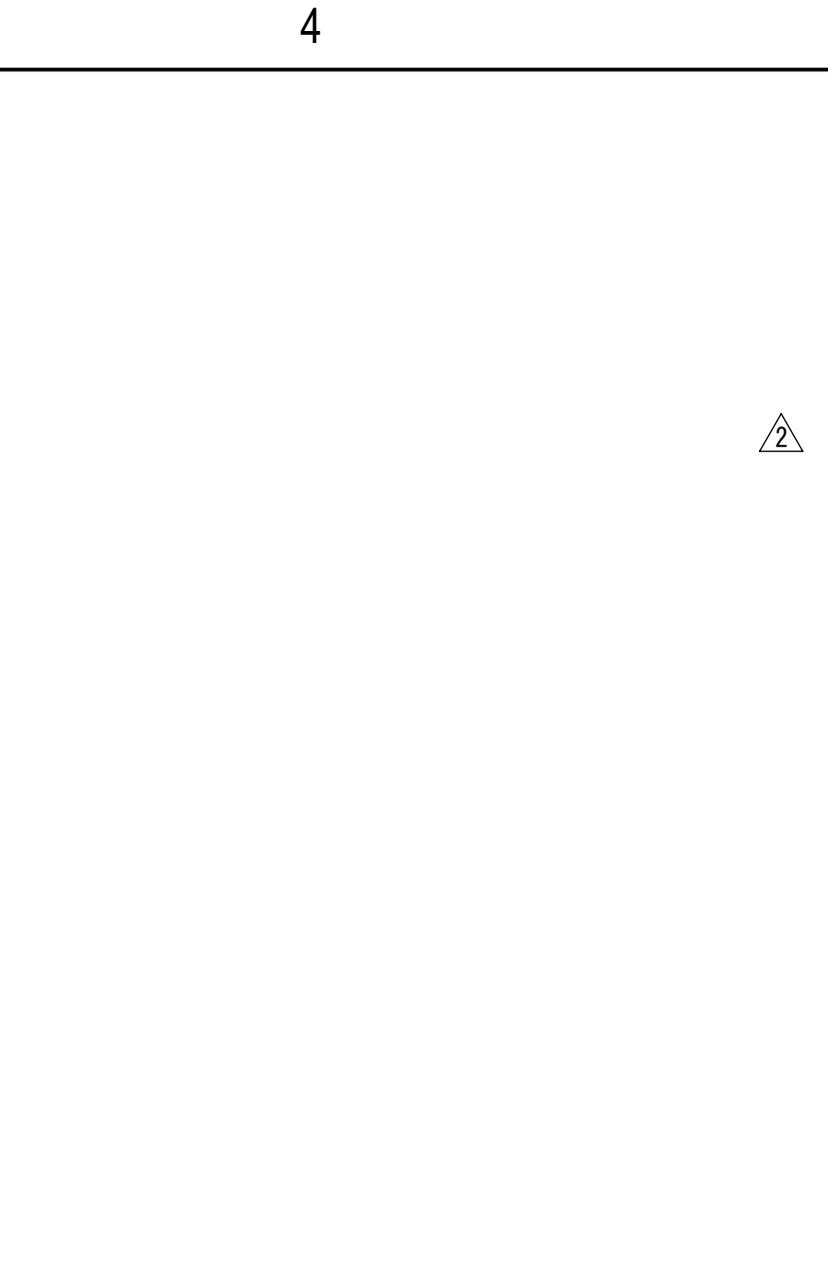
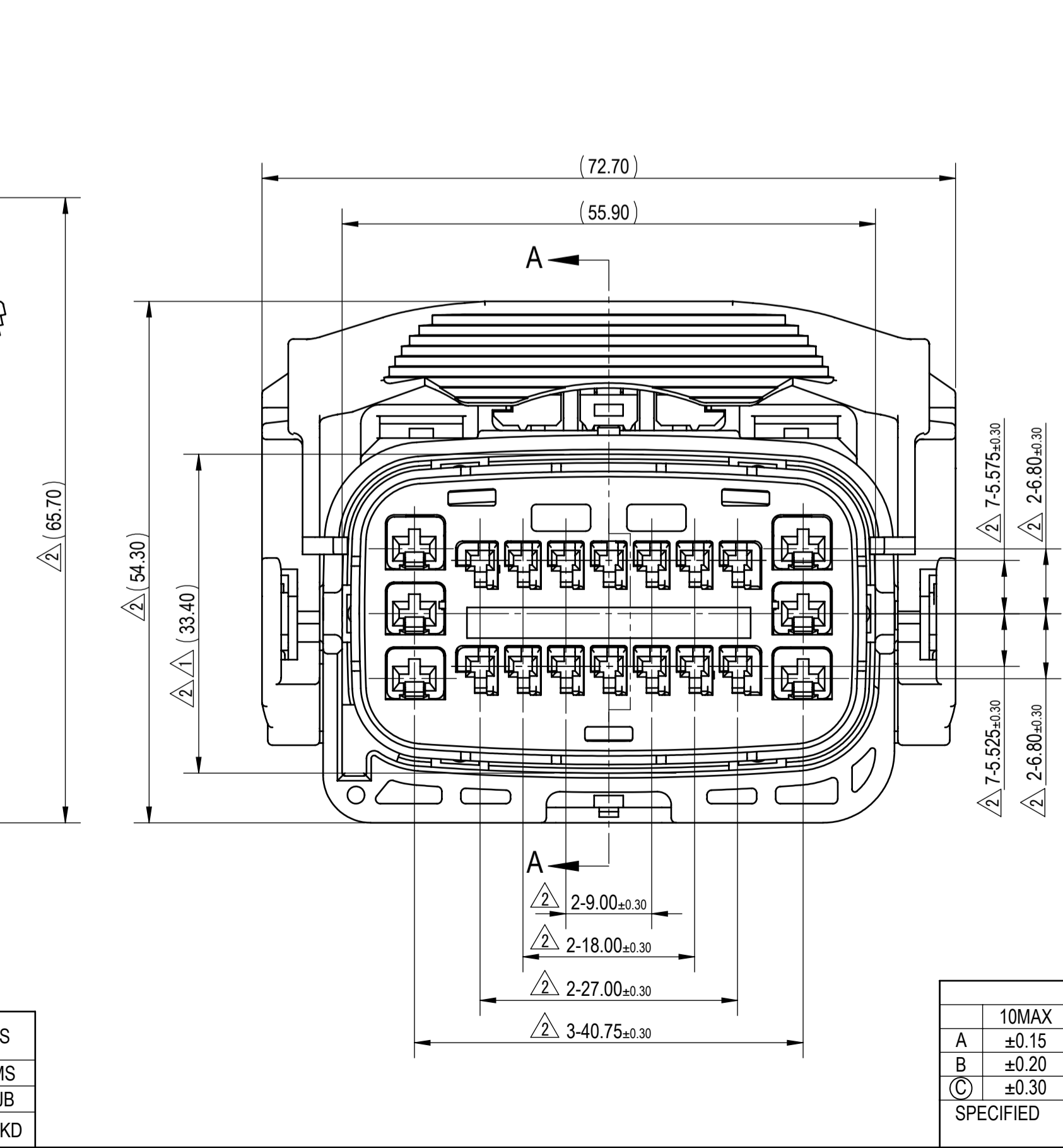
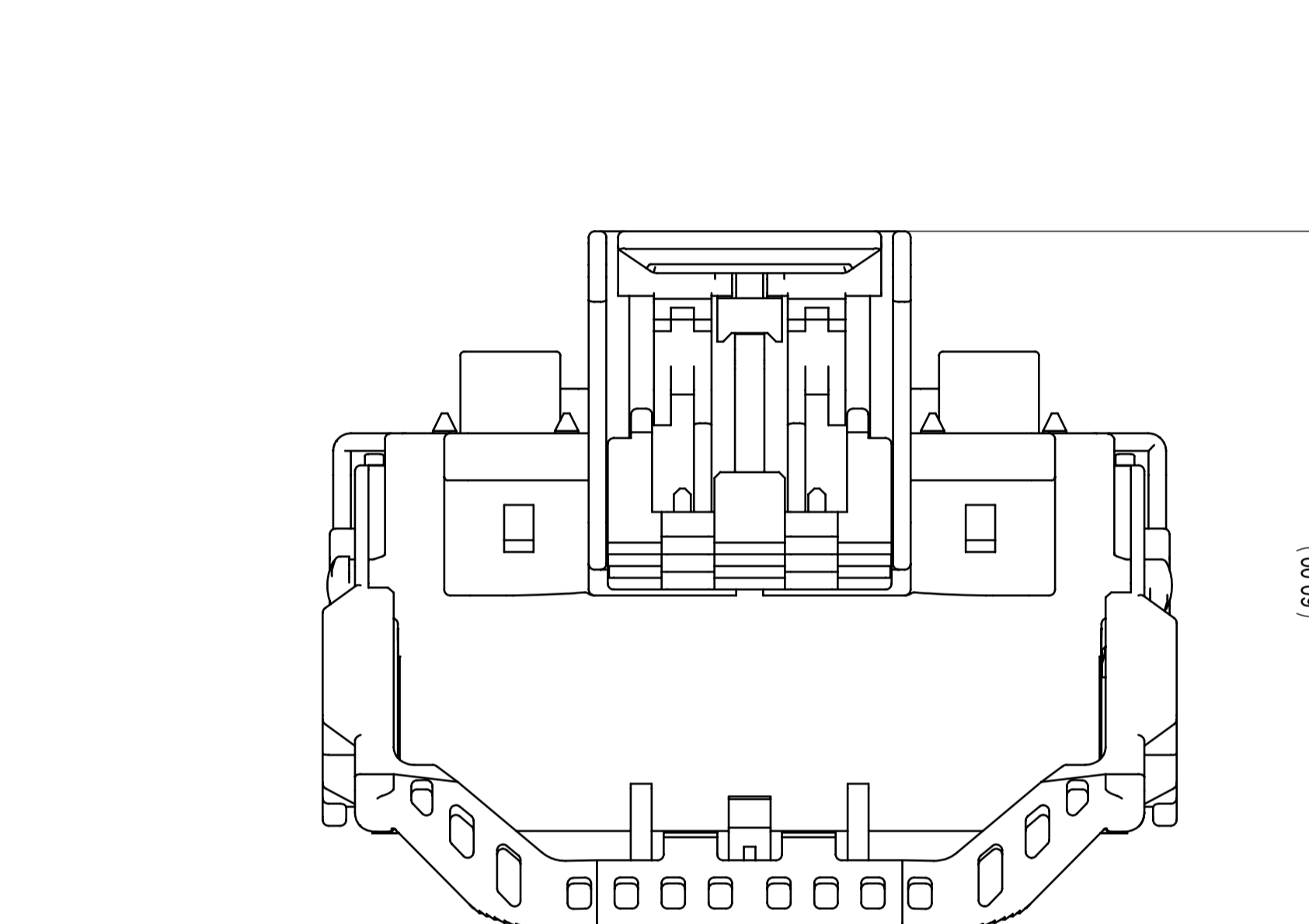
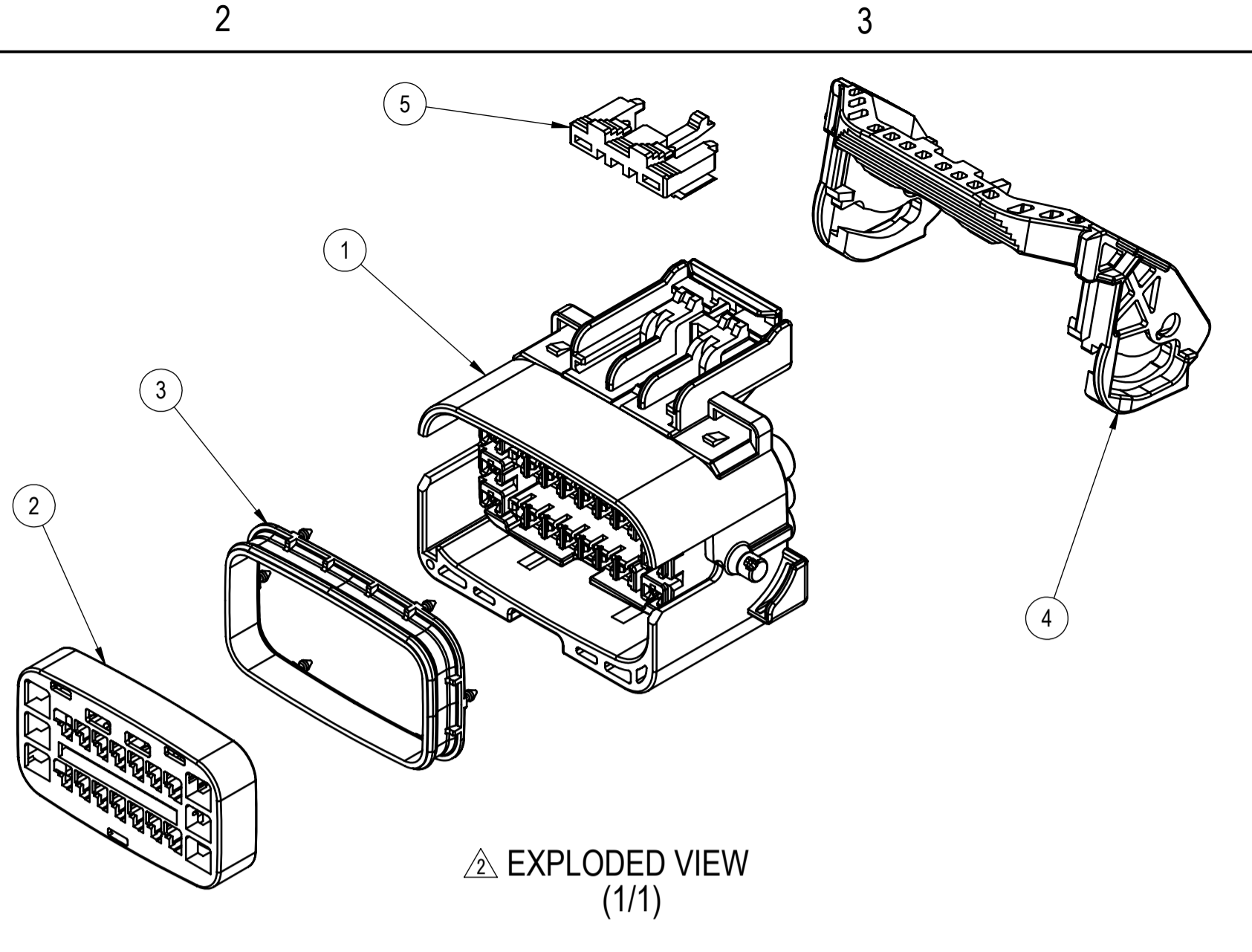
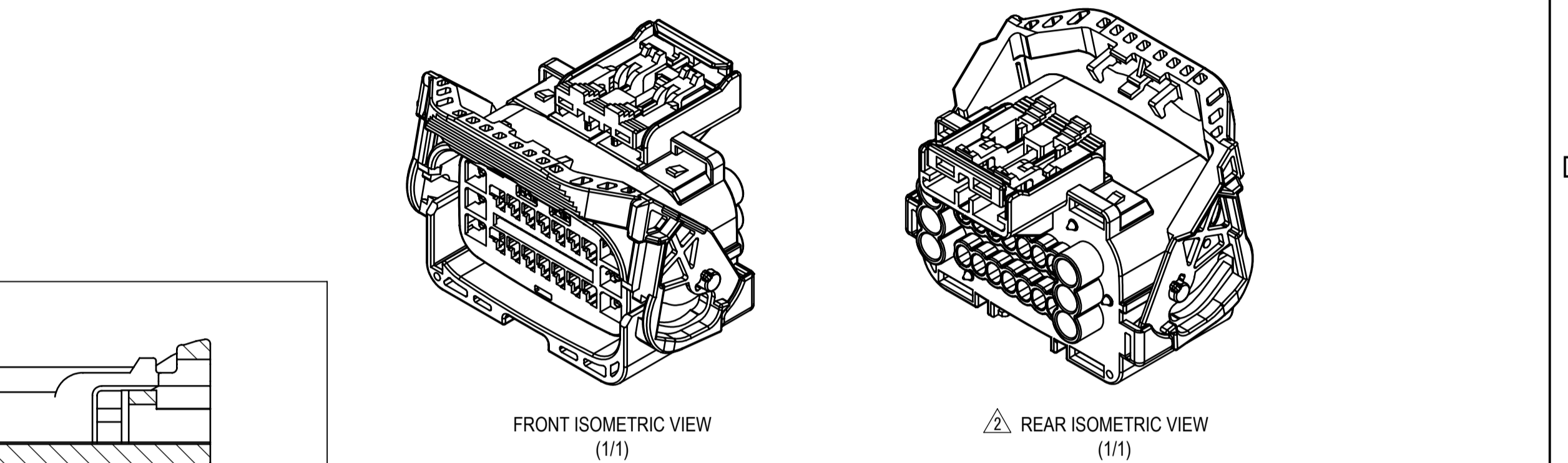


10-25-2017	REVISED FORM, UPDATED LEVER, ADDED PART NUMBERS	C17-AB27	KS
11-15-2006	ADDED NOTE	C06-AE38	JMS
09-02-2005	NEW	C05-A972	CJB
LET	DATE	REVISION RECORD	NO. CHKD

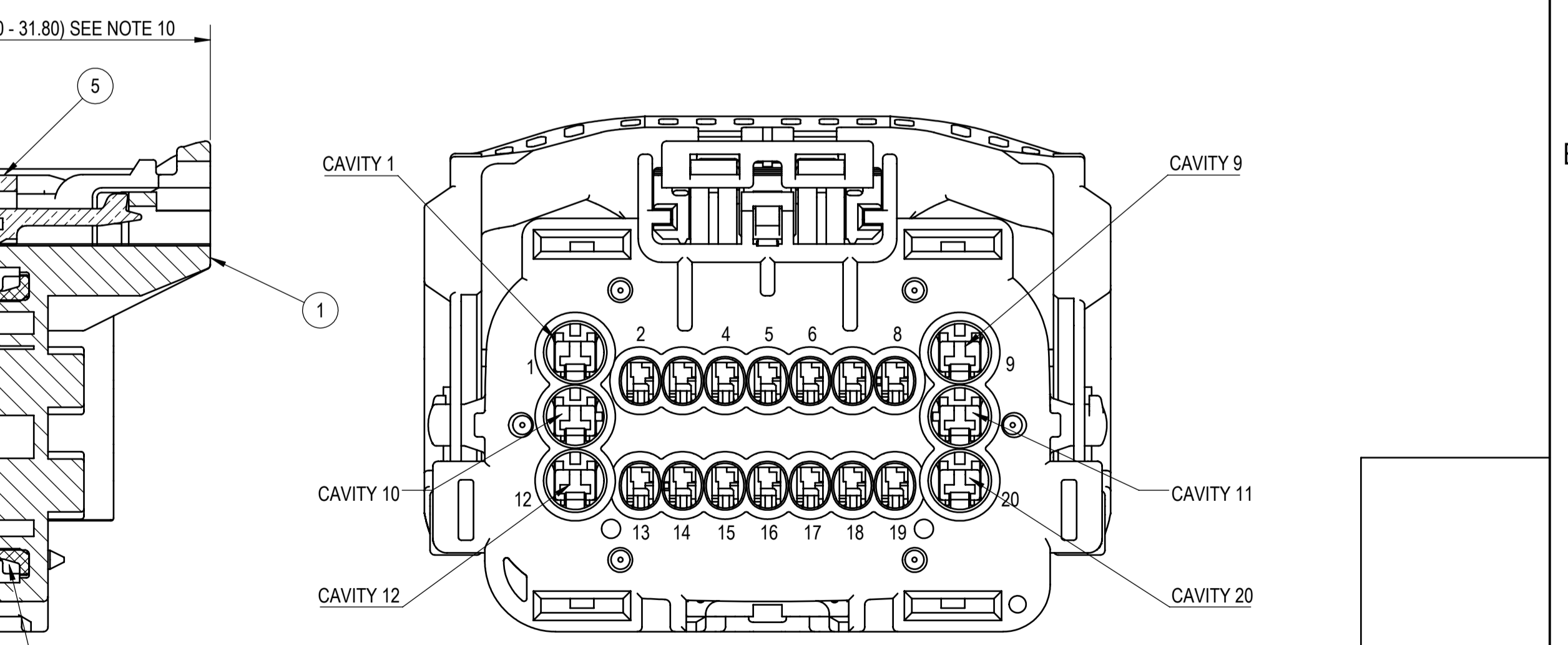


SUB ASSEMBLY PART NUMBER	NO.	PART NUMBER	PART NAME	MATERIAL	COLOR	QUANTITY
7283-9450-30 ETC.	1	SEE TABLE 2	20P (6X2.8mm + 14X1.5mm) YESC SEALED FEMALE CONNECTOR HOUSING	PBT-GF15	SEE TABLE 2	1
	2	7158-6747	20P (6X2.8mm + 14X1.5mm) YESC SEALED FEMALE CONNECTOR TPA	PBT-GF15	NATURAL	1
	3	7137-2649-50	20P (6X2.8mm + 14X1.5mm) YESC SEALED FEMALE CONNECTOR INTERFACIAL SEAL	SILICONE	RED	1
	4	SEE TABLE 2	20P (6X2.8mm + 14X1.5mm) YESC SEALED FEMALE CONNECTOR LEVER	PBT-GF30	SEE TABLE 2	1
	5	7158-5454-50	FEMALE SEALED CPA	HPA	RED	1
7283-9451-30 ETC.	1	SEE TABLE 2	20P (6X2.8mm + 14X1.5mm) YESC SEALED FEMALE CONNECTOR HOUSING	PBT-GF15	SEE TABLE 2	1
	2	7158-6747	20P (6X2.8mm + 14X1.5mm) YESC SEALED FEMALE CONNECTOR TPA	PBT-GF15	NATURAL	1
	3	7137-2649-50	20P (6X2.8mm + 14X1.5mm) YESC SEALED FEMALE CONNECTOR INTERFACIAL SEAL	SILICONE	RED	1
	4	SEE TABLE 2	20P (6X2.8mm + 14X1.5mm) YESC SEALED FEMALE CONNECTOR LEVER	PBT-GF30	SEE TABLE 2	1

SUB-ASSEMBLY PART NUMBER	HOUSING PART NUMBER	KEYWAY	CPA	MASS (g)	HOUSING COLOR	LEVER PART NUMBER	LEVER COLOR	YAZAKI INLINE MATING PART NUMBER
7283-9450-30	7183-9450-30	A	Y	(63.1)	BLACK	7158-9149-40	LIGHT GRAY	7282-9450-30
7283-9451-30	7183-9450-30	A	N	(61.8)	BLACK	7158-9149-40	LIGHT GRAY	7282-9450-30
7287-2290-10	7187-2288-10	B	Y	(63.1)	DARK GRAY	7158-9149-40	LIGHT GRAY	7286-2288-10
7287-2288-10	7187-2288-10	B	N	(61.8)	DARK GRAY	7158-9149-40	LIGHT GRAY	7286-2288-10
7287-8321-30	7183-9450-30	A	Y	(63.1)	BLACK	7158-9149-30	BLACK	7282-9450-30
7287-8322-30	7183-9450-30	A	N	(61.8)	BLACK	7158-9149-30	BLACK	7282-9450-30



- NOTES:
- PARTS MUST BE PURCHASED FROM YAZAKI.
 - PARTS MUST BE FREE OF FLASH AND IMPERFECTIONS THAT AFFECT FUNCTION.
 - APPLICABLE TERMINAL: SEE 7116-4102-02-R DRAWING (1.5mm YESC)
MAX WIRE OD: 2.40mm
MIN WIRE OD: 1.10mm
SEE 7116-4150-02-R DRAWING (2.8mm YESC)
MAX WIRE OD: 3.80mm
MIN WIRE OD: 1.20mm
 - APPLICABLE WIRE SEAL: SEE 7158-3374-90-R DRAWING (1.5mm YESC REDUCED PITCH)
SEE 7158-3111-60-R DRAWING (2.8mm YESC)
 - APPLICABLE CAVITY PLUG: SEE 7158-3037-70-R DRAWING (1.5mm YESC REDUCED PITCH)
SEE 7158-3114-90-R DRAWING (2.8mm YESC)
 - MATING PART NUMBER: SEE TABLE 2
 - PART SATISFIES USCAR-2, REVISION 4, MAY 2004, (T3/V1/S2/MF3) WITH THE FOLLOWING EXCEPTIONS:
SECTION 5.4.5 TPA REMOVAL FROM HOUSING = 20.2N MIN
SECTION 5.4.5 CPA FULL INSTALL TO PRE-SET = 1.88N - 30N
 - PART TO COMPLY WITH YPES-31-038 REQUIREMENTS.
 - THIS DIMENSION SHOWS THE PRE-SET POSITION OF THE TPA.
 - THIS DIMENSION SHOWS THE PRE-SET POSITION OF THE CPA.
 - THIS DRAWING IS TO BE USED FOR INTERNAL YAZAKI PSW SUBMISSION.
 - CLIP SLOT: REFERENCE YPES-15-1344E (PAGE 6)
 - HANDLING MANUAL NUMBER: YPES-15-1344E
 - CONNECTOR IS CAPABLE OF ACCEPTING A DRESS COVER.



CUSTOMER PART NO.		CUSTOMER DWG NO.		MTRL SPEC.		SEE TABLE		TREAT. & FIN.		N/A	
OFFICE		YNA		TRIAL PART NO.		NAME		20P (6X2.8mm + 14X1.5mm) YESC SEALED		ISSUE MARK	
VENDOR						FEMALE CONNECTOR SUB-ASSEMBLY					
VENDOR NO.						PART NO.		7283-9450-30, ETC.			
DWG TYPE		R		DWG SOURCE		DWG DATE		UNIT		SCL	
APPROVED		CHECKED		CHECKED		DESIGN		DRAWN		PART NO.	
KIRK STAMBAUGH		KIRK STAMBAUGH		KIRK STAMBAUGH		12-09-2004		11-06-2017		CH. CODE	
										DWG NO.	
										7283-9450-30:R	
										YAZAKI CORPORATION	

GENERAL TOLERANCE											
	10MAX	50MAX	100MAX	250MAX	250OVR	R5 MAX	R10 MAX	R20 MAX	R20 OVR	ANGLE	ECCENT
A	± 0.15	± 0.20	± 0.30	± 0.50	± 0.75	± 0.20	± 0.30	± 0.50	± 2.50	$\pm 3^\circ$	0.1
B	± 0.20	± 0.30	± 0.55	± 0.95	± 1.40	± 0.20	± 0.30	± 0.50	± 2.50	$\pm 3^\circ$	0.1
C	± 0.30	± 0.50	± 0.80	± 1.40	± 2.00	± 0.20	± 0.30	± 0.50	± 2.50	$\pm 3^\circ$	0.15
SPECIFIED											MASS (SEE TABLE 2) g