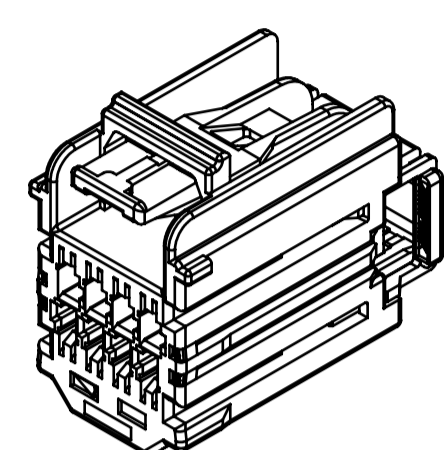
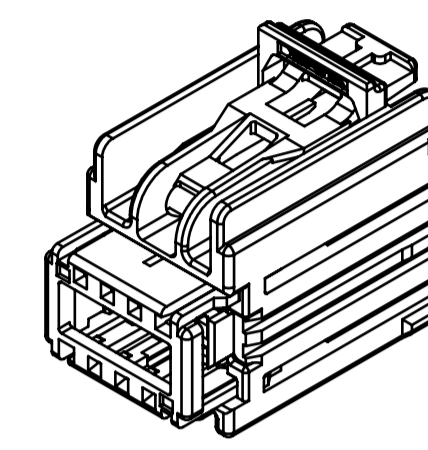
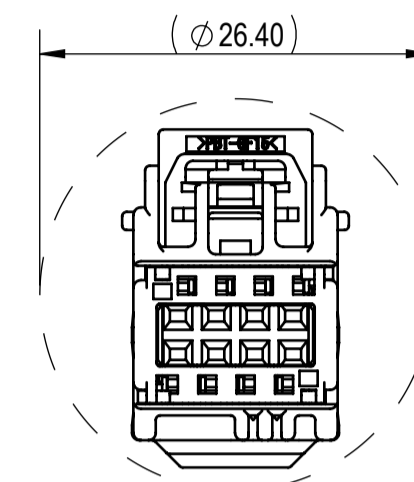


TABLE 1	SUB-ASSEMBLY PART NUMBER	NO.	PART NUMBER	PART NAME	MATERIAL	COLOR	QUANTITY
	SEE TABLE 2	①	SEE TABLE 2	8P 0.64mm YESC KAIZEN UNSEALED FEMALE CONNECTOR HOUSING	PBT-GF15	SEE TABLE 2	1
		②	7158-6581	8P 0.64mm YESC KAIZEN UNSEALED CONNECTOR FEMALE TPA	PBT-GF15	NATURAL	1
		③	7172-1081-50	0.64mm KAIZEN UNSEALED CONNECTOR CPA	NYLON	RED	1

TABLE 2	SUB-ASSEMBLY PART NUMBER	HOUSING PART NUMBER	KEYWAY	CPA	COLOR	MASS (g)	YAZAKI INLINE MATING PART NUMBER
	7283-9028-30	7183-9022-30	A	NO	BLACK	(3.63)	7282-9022-30
	7283-9029-40	7183-9023-40	B	NO	LIGHT GRAY	(3.63)	N/A
	7289-2894-30	7183-9022-30	A	YES	BLACK	(3.95)	7282-9022-30
	7289-2895-40	7183-9023-40	B	YES	LIGHT GRAY	(3.95)	N/A



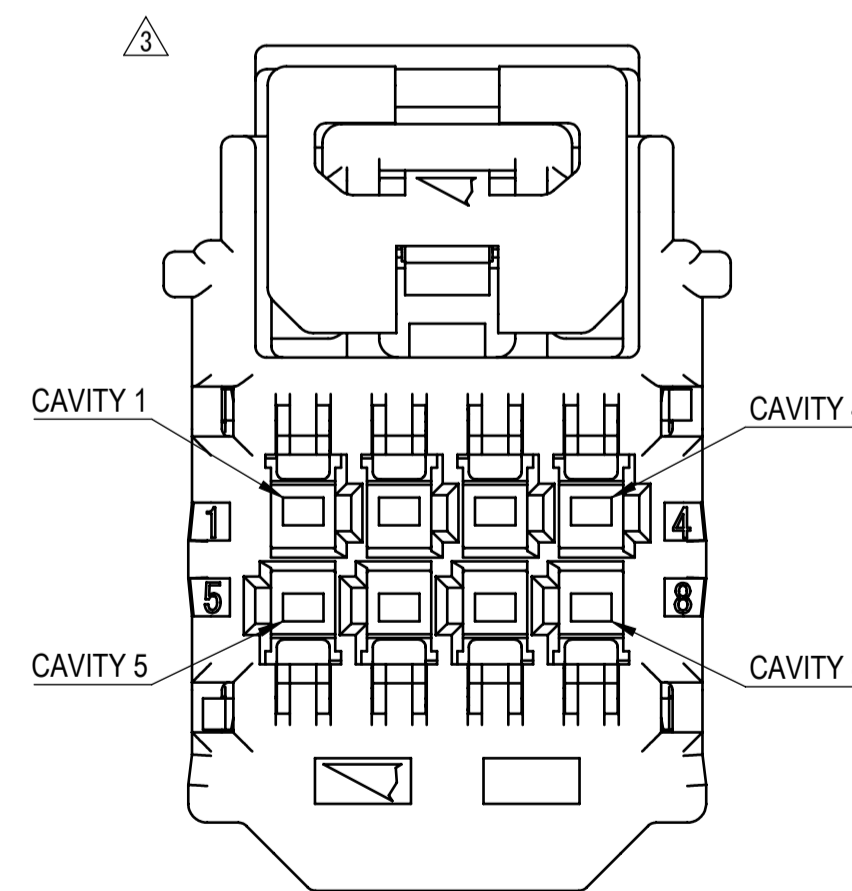
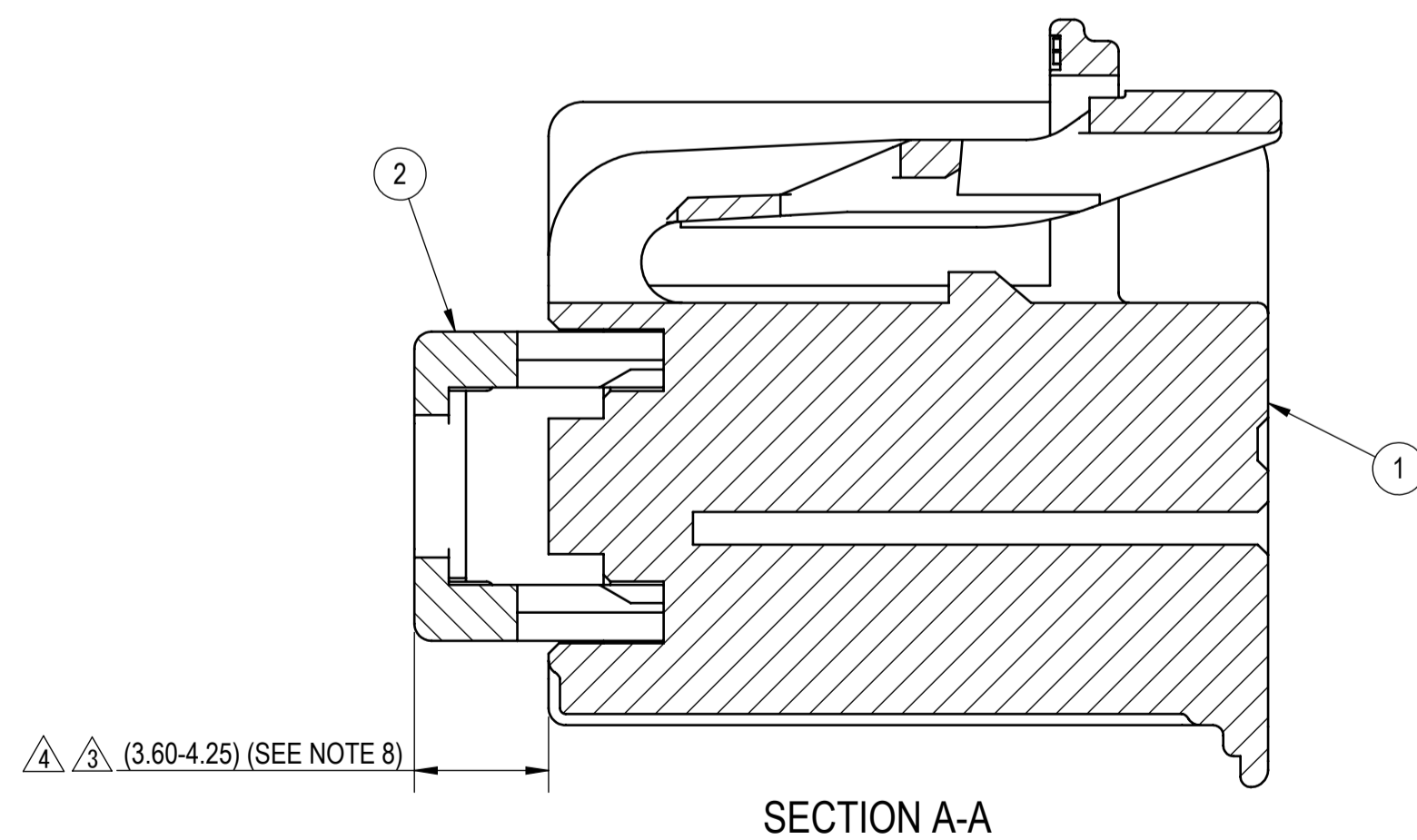
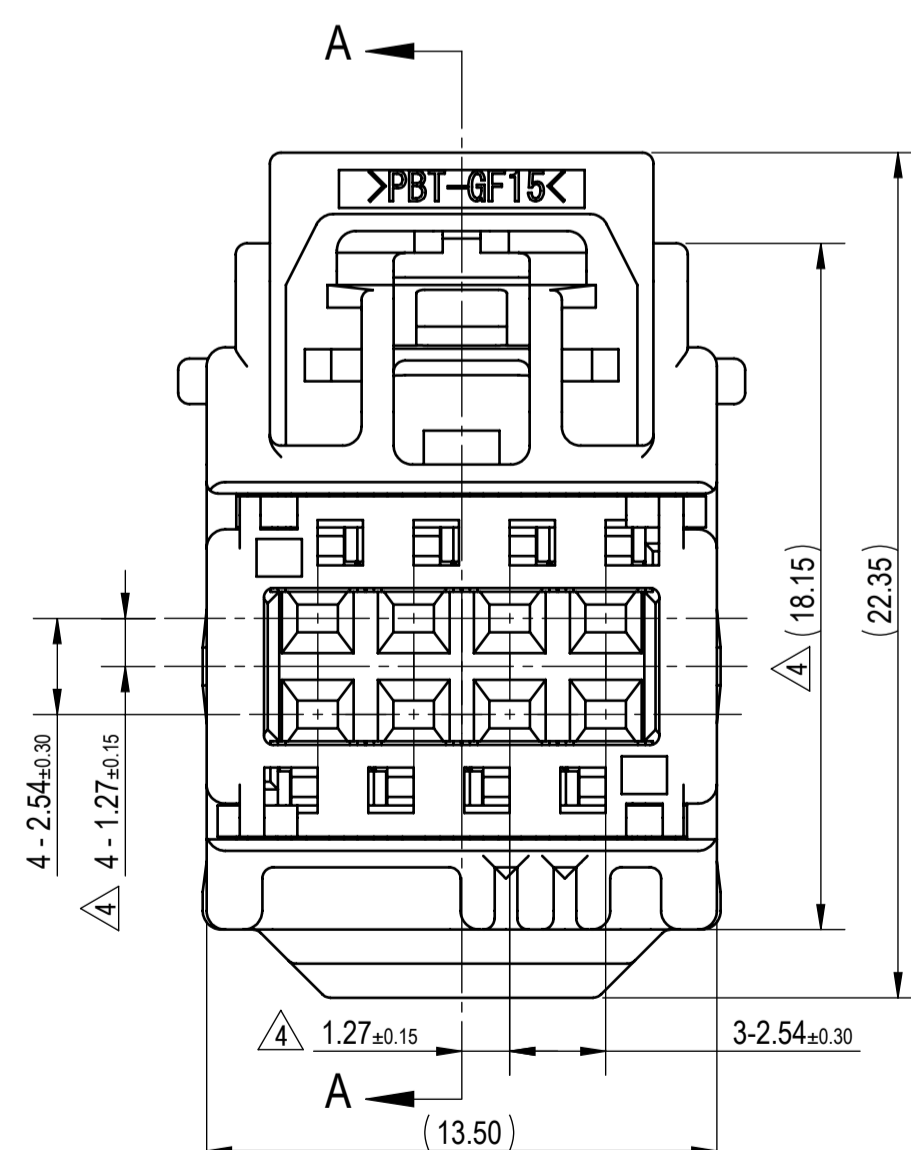
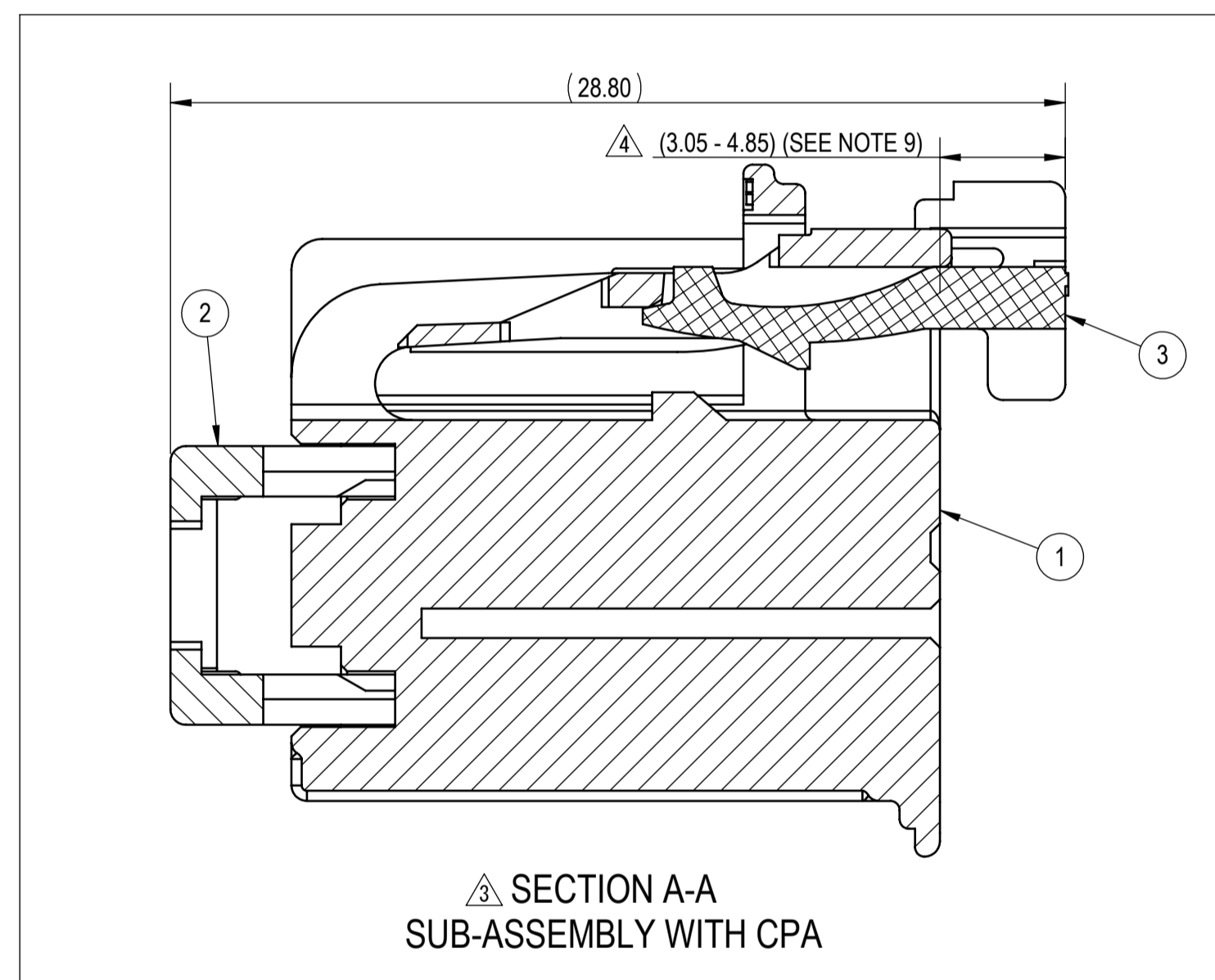
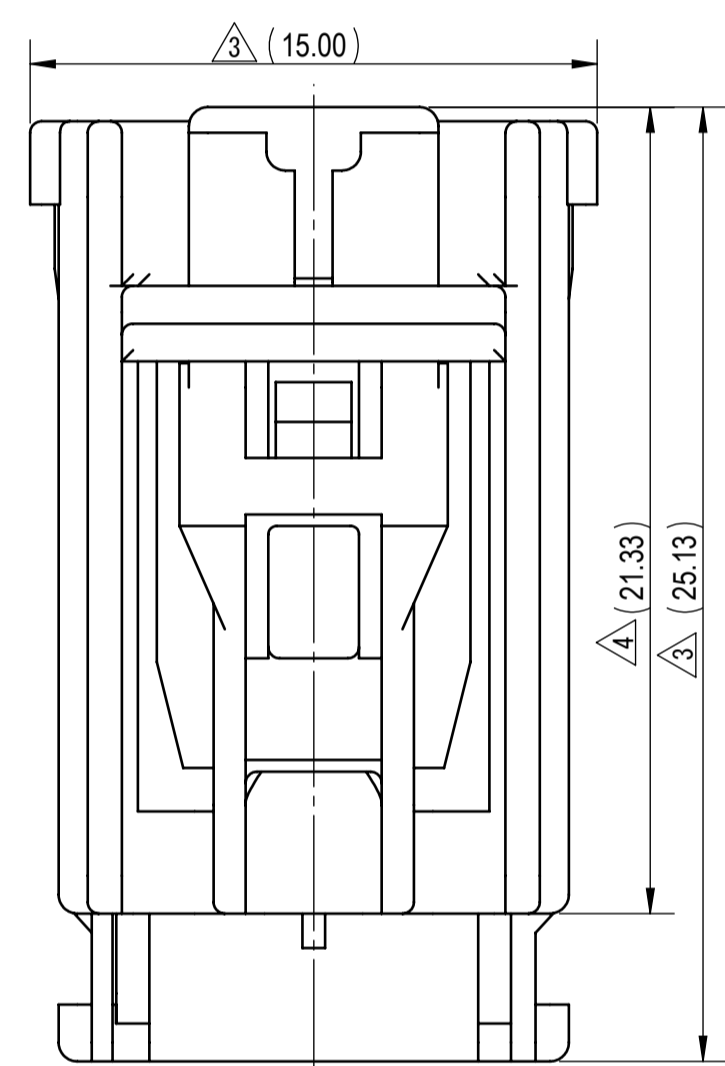
RECOMMENDED PASS-THROUGH HOLE DIMENSION (1mm CLEARANCE ALL AROUND) (2/1)

FRONT ISOMETRIC VIEW (2/1)

REAR ISOMETRIC VIEW (2/1)

NOTES:

- PARTS MUST BE PURCHASED FROM YAZAKI.
- PARTS MUST BE FREE OF FLASH AND IMPERFECTIONS THAT AFFECT FUNCTION.
- APPLICABLE TERMINAL: SEE 7116-4618-02:R DRAWING (0.64mm KAIZEN UNSEALED). MAX WIRE OD: 1.90mm
- MATING PART NUMBER: SEE TABLE 2
- PART DESIGNED TO MEET USCAR INTERFACE: 064-U-008-2-Z02
- PART SATISFIES USCAR-2, REVISION 3, APRIL 2001, (T2N1/S1).
- PART TO COMPLY WITH YPES-31-038 REQUIREMENTS.
- THIS DIMENSION SHOWS THE PRE-SET POSITION OF THE TPA.
- THIS DIMENSION SHOWS THE PRE-SET POSITION OF THE CPA.
- THIS DRAWING IS TO BE USED FOR INTERNAL YAZAKI PSW SUBMISSION.
- HANDLING MANUAL NUMBER YPES-15-711E



REV	DATE	REVISION RECORD	NO.	CHKD
△	08-30-2022	FIXED TYPO IN THE INTERFACE REFERENCE, REVISED DIMENSION AND NOTES	C22-A451	A.P
△	10-29-2018	CORRECTED PART NUMBER & UPDATED TO LATEST STANDARDS	C18-AA55	M.S.
△	11-11-2015	CHANGED FORM, TABLE, ADDED DIMENSIONS & CPA	C15-A895	K.S.
△	10-15-2010	CHANGE PART NAME	C10-ZA72	N.B.
△	10-04-2006	CHANGED PART FORM,	C06-Z944	T.Y.
-	12-22-2003	NEW	C03-R527	T.M.

GENERAL TOLERANCE									
	10MAX	50MAX	100MAX	250MAX	250OVR	R5 MAX	R10 MAX	R20 MAX	R20 OVR
A	±0.15	±0.20	±0.30	±0.50	±0.75				
B	±0.20	±0.30	±0.55	±0.95	±1.40	±0.20	±0.30	±0.50	±2.50
C	±0.30	±0.50	±0.80	±1.40	±2.00				

CUSTOMER		CUSTOMER DWG NO.		MATERIAL SPEC.		TREAT. & FIN.	
CUSTOMER PART NO.		CUSTOMER DWG NO.		SEE TABLE 1		N/A	
OFFICE YNA		TRIAL PART NO.		NAME			
VENDOR				△ 8P 0.64mm YESC KAIZEN UNSEALED			
VENDOR NO.				FEMALE CONNECTOR SUB-ASSEMBLY			
DWG TYPE		DWG SOURCE		DWG DATE		PART NO.	
R		7283-9028-30:M		12-22-2003		7283-9028-30, ETC.	
APPROVED		CHECKED		CHECKED		DWG NO.	
DESIGN		DESIGN		DRAWN		7283-9028-30:R	
T. MIYAKAWA		ADILENE PEREZ		YAZAKI CORPORATION			
11-03-2003		08-30-2022					