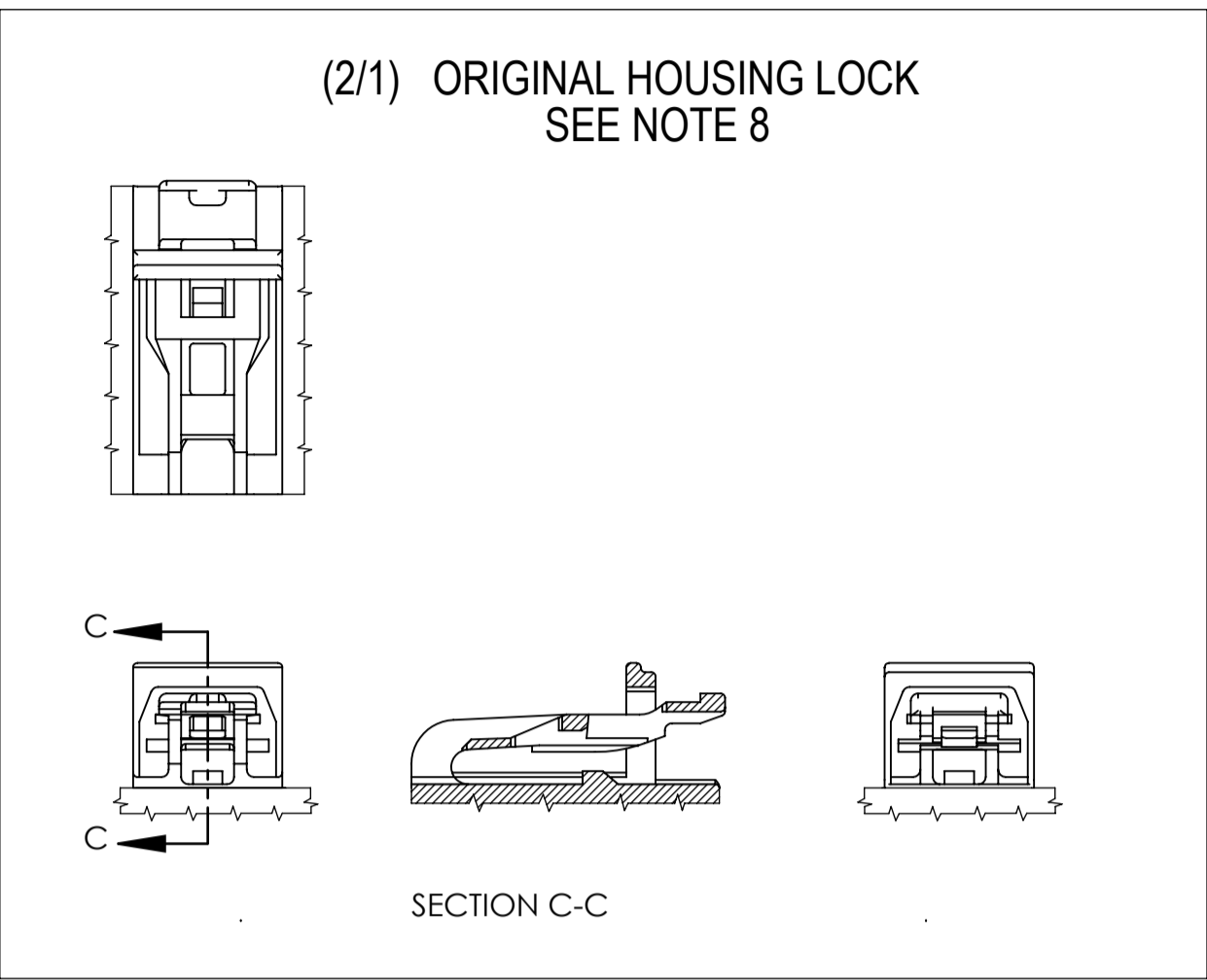
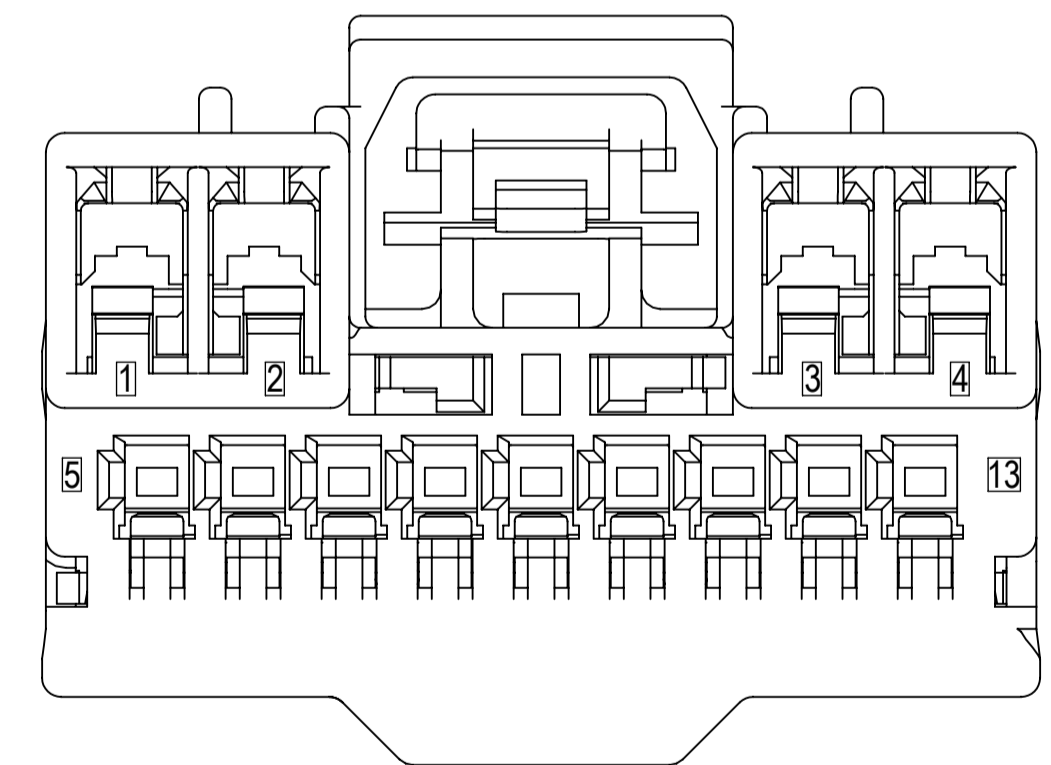
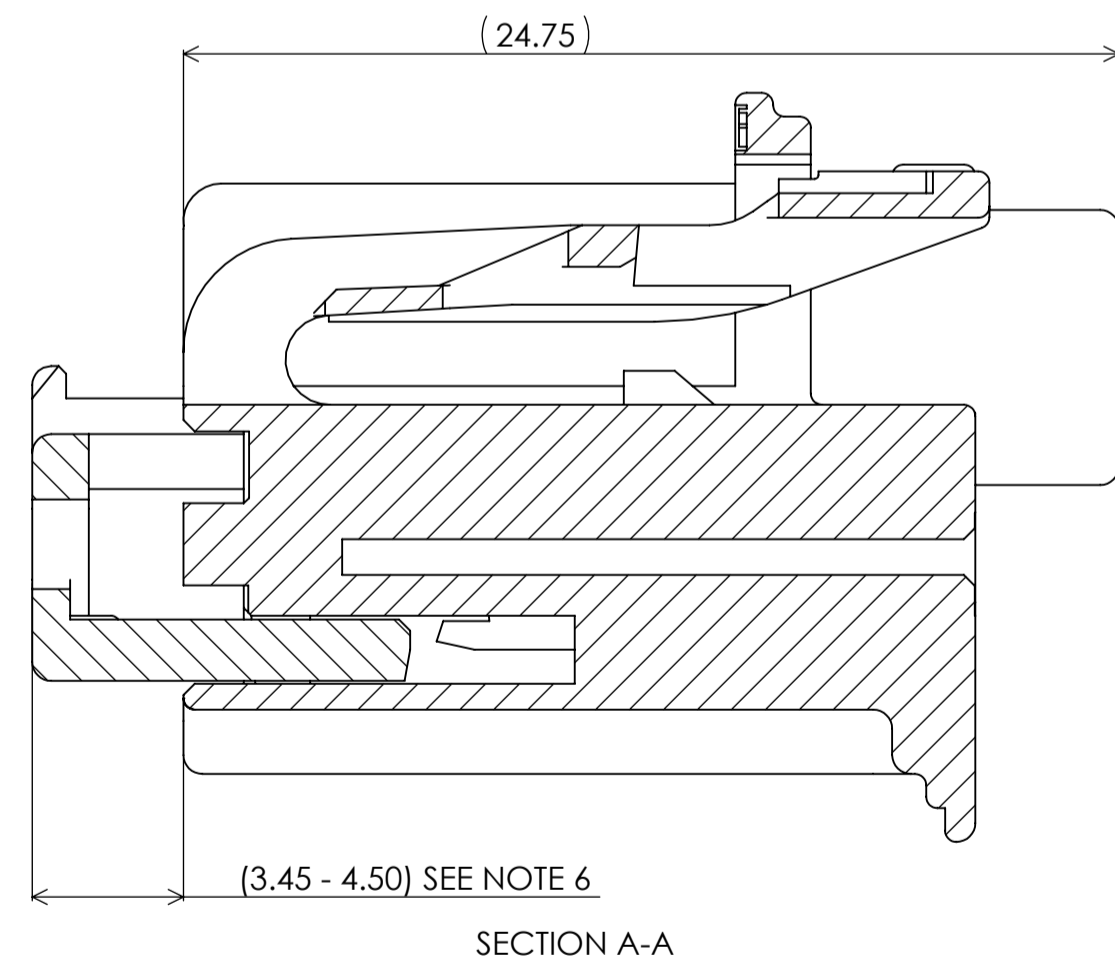
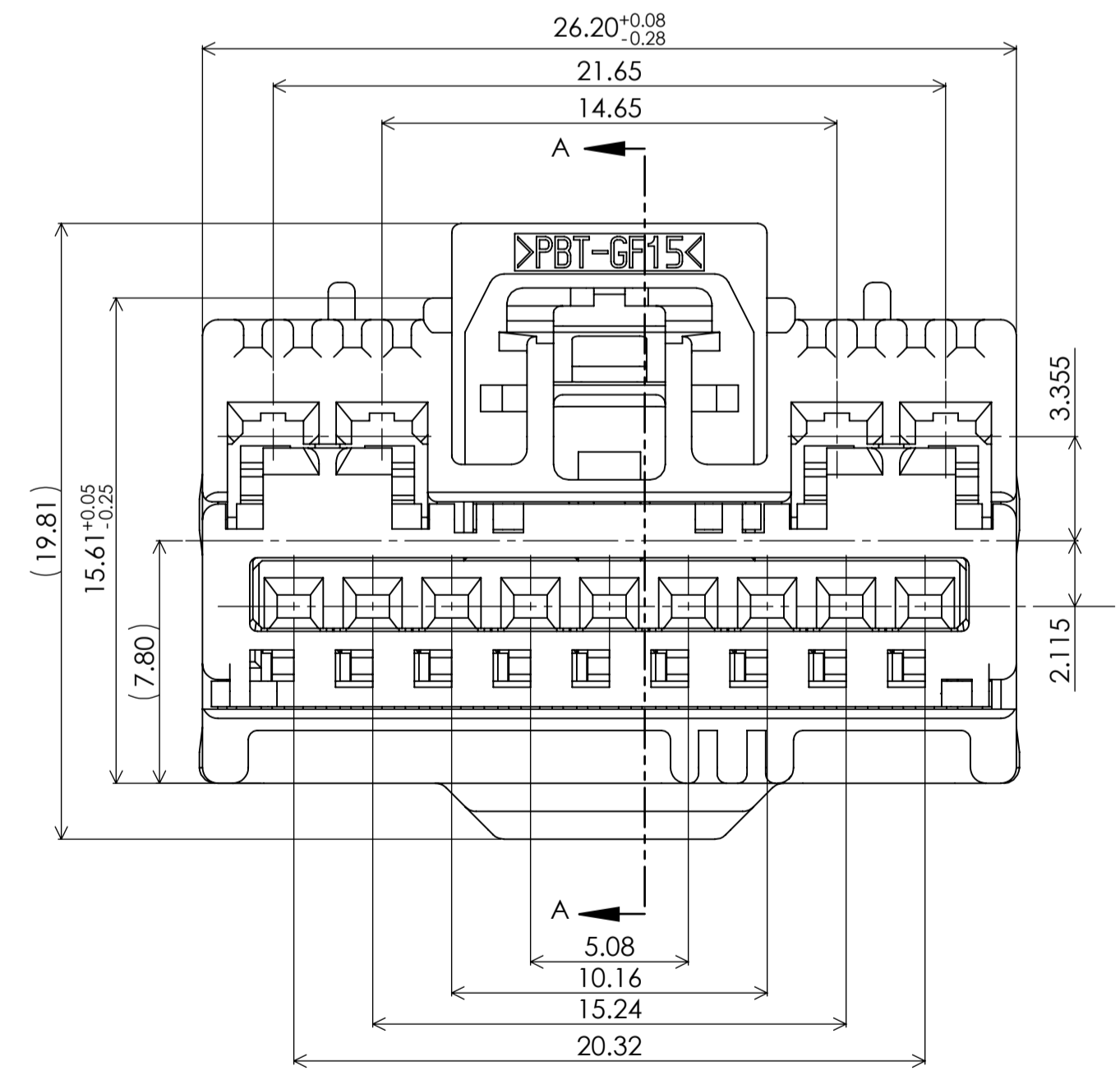


TABLE 1		SUB ASSEMBLY PART NUMBER	NO.	PART NUMBER	PART NAME	MATERIAL	COLOR	QUANTITY
		7283-3522-30	①	SEE TABLE 2	13P (9P 0.64 YESC KAIZEN + 4P 1.5 YESC) UNSEALED FEMALE HOUSING	PBT-GF	SEE TABLE 2	1
			②	7158-6524	13P (9P 0.64 YESC KAIZEN + 4P 1.5 YESC) UNSEALED FEMALE TPA	PBT-GF	NATURAL	1

TABLE 2		SUB ASSEMBLY PART NUMBER	HOUSING PART NUMBER	KEYWAY OPTION	COLOR	YAZAKI INLINE MATING PART NUMBER
		7283-3522-30	7183-3522-30	A	BLACK	N/A
		7283-3523-40	7183-3523-40	B	LIGHT GREY	N/A



- PARTS MUST BE PURCHASED FROM YAZAKI.
- PARTS MUST BE FREE OF FLASH AND IMPERFECTIONS THAT AFFECT FUNCTION.
- APPLICABLE TERMINALS: 7116-4780-02, ETC. (1.5mm YESC KAIZEN)
7116-4618-02, ETC. (0.64mm YESC KAIZEN)
- MATING PART NUMBER: SEE TABLE 2.
- PART DESIGNED TO SATISFY USCAR-2, REV 3, APRIL 2001, T2, WITH THE FOLLOWING EXCEPTIONS:
 - SECTION 5.4.2 HOUSING LOCK FORCE TO SERVICE.
- THIS DIMENSION SHOWS THE PRE-SET POSITION OF THE TPA.
- THIS DRAWING IS TO BE USED FOR INTERNAL YAZAKI PSW SUBMISSION.
- ORIGINAL HOUSING LOCK IS ACCEPTABLE FOR USE ON ALL KEYWAYS.
- PART TO COMPLY WITH YPES-31-038 REQUIREMENTS.



△	11-12-15	NEW	C15-A896	JG
LET	DATE	REVISION RECORD	NO.	CHKD

GENERAL TOLERANCE										
A	±0.15	±0.2	±0.3	±0.5	±0.75	±0.2	±0.3	±0.5	±2.5	±3°
B	±0.2	±0.3	±0.55	±0.95	±1.4					±3°
C	±0.3	±0.5	±0.8	±1.4	±2					±3°
SPECIFIED										MASS (6.22) g

CUSTOMER PART NO.		CUSTOMER DWG NO.		MATL. SPEC.	SEE TABLE 1	TREAT. & FIN.	N/A
OFFICE YNA		TRIAL PART NO.		NAME 13P (9P 0.64mm YESC KAIZEN + 4P 1.5mm YESC KAIZEN)			
VENDOR		VENDOR NO.		UNSEALED FEMALE SUB-ASSEMBLY			
DWG TYPE R		DWG SOURCE 7283-3522-30.M		DWG DATE 11-12-15	UNIT mm	SCL 5/1	ANGLE 3
APPROVED		CHECKED		CHECKED	DESIGN	DRAWN	
				J. GAGNON	J. GONZALEZ		
				01-21-04	11-30-15		
				PART NO. 7283-3522-30 ETC.			
				CH. CODE			
				DWG NO. 7283-3522-30 : R			
				YAZAKI CORPORATION			

ISSUE MARK