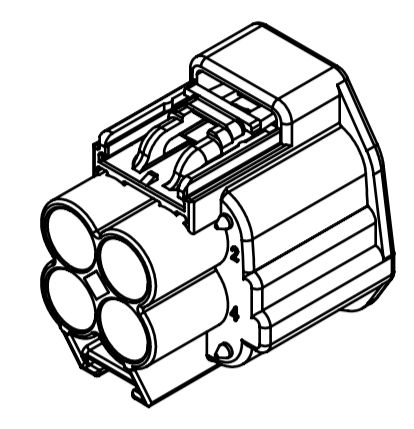
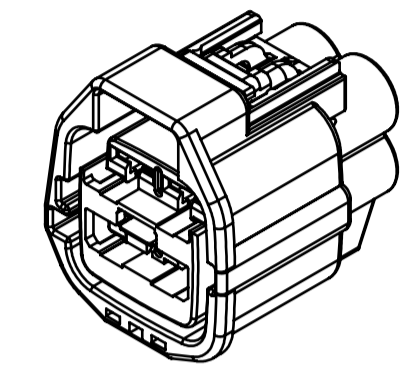
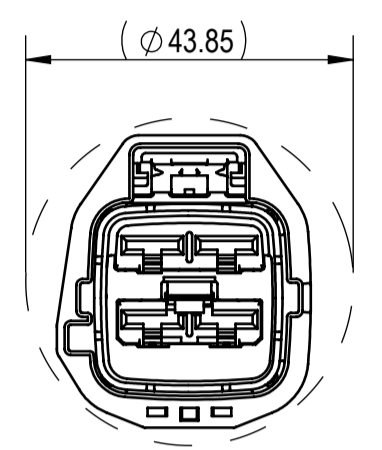


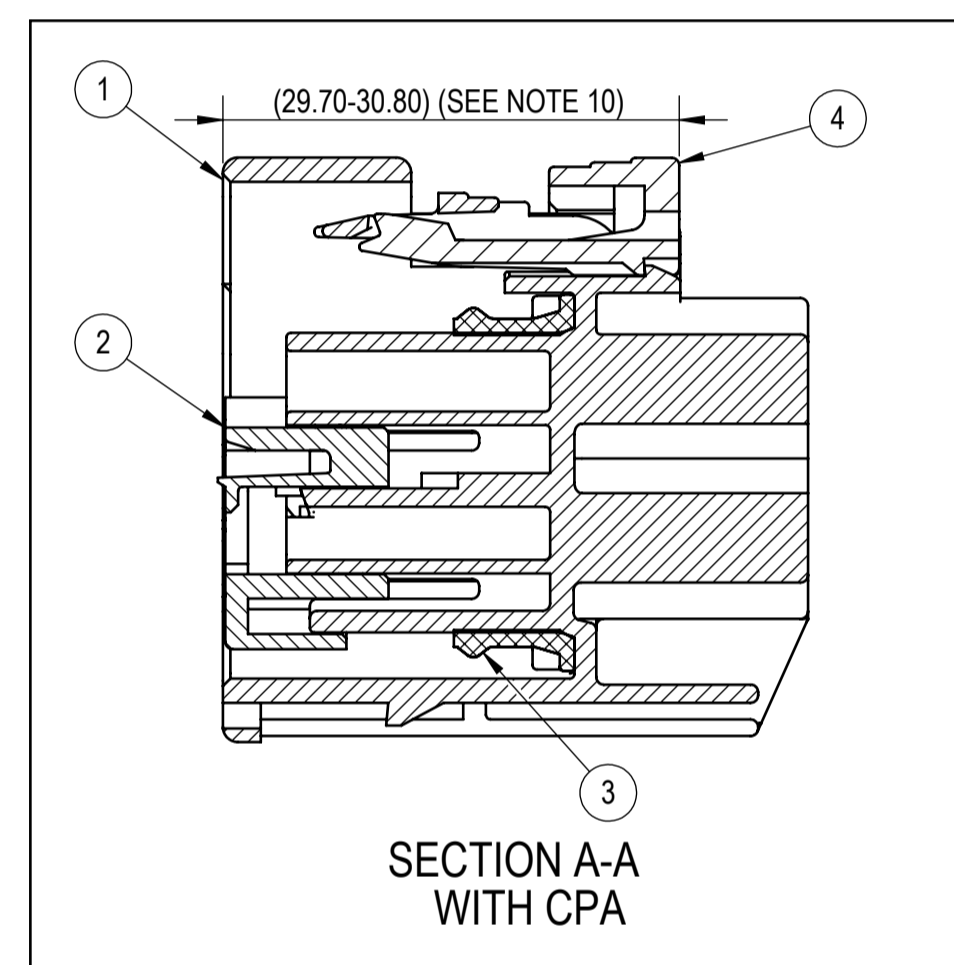
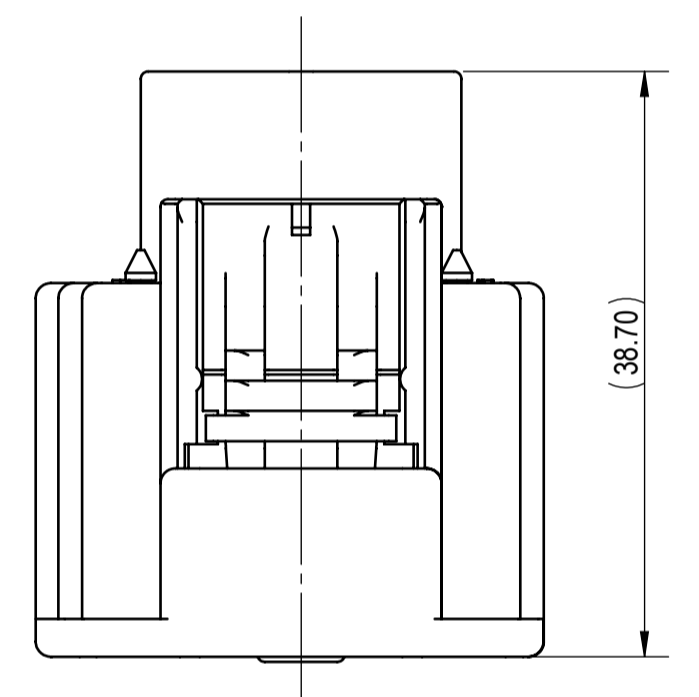
| SUB-ASSEMBLY PART NUMBER | NO. | PART NUMBER  | PART NAME  | MATERIAL | COLOR     | QUANTITY | △ MASS (g) |
|--------------------------|-----|--------------|--|----------|-----------|----------|------------|
| 7283-3108-10             | ①   | 7183-3108-10 | 4P 6.3mm YESC SEALED FEMALE CONNECTOR HOUSING        | PBT-GF   | DARK GRAY | 1        | (17.90)    |
|                          | ②   | 7158-4217    | 4P 6.3mm YESC SEALED FEMALE CONNECTOR TPA            | HPA      | NATURAL   | 1        |            |
|                          | ③   | 7137-2740-70 | 4P 6.3mm YESC SEALED FEMALE CONNECTOR INTERFACE SEAL | SILICONE | YELLOW    | 1        |            |
| 7283-3601-10             | ①   | 7183-3108-10 | 4P 6.3mm YESC SEALED FEMALE CONNECTOR HOUSING        | PBT-GF   | DARK GRAY | 1        | (18.50)    |
|                          | ②   | 7158-4217    | 4P 6.3mm YESC SEALED FEMALE CONNECTOR TPA            | HPA      | NATURAL   | 1        |            |
|                          | ③   | 7137-2740-70 | 4P 6.3mm YESC SEALED FEMALE CONNECTOR INTERFACE SEAL | SILICONE | YELLOW    | 1        |            |
|                          | ④   | 7158-7080-50 | YESC SEALED FEMALE CONNECTOR CPA                     | HPA      | RED       | 1        |            |



△ RECOMMENDED PASS-THROUGH HOLE DIMENSION (1mm CLEARANCE ALL AROUND) (1/1)

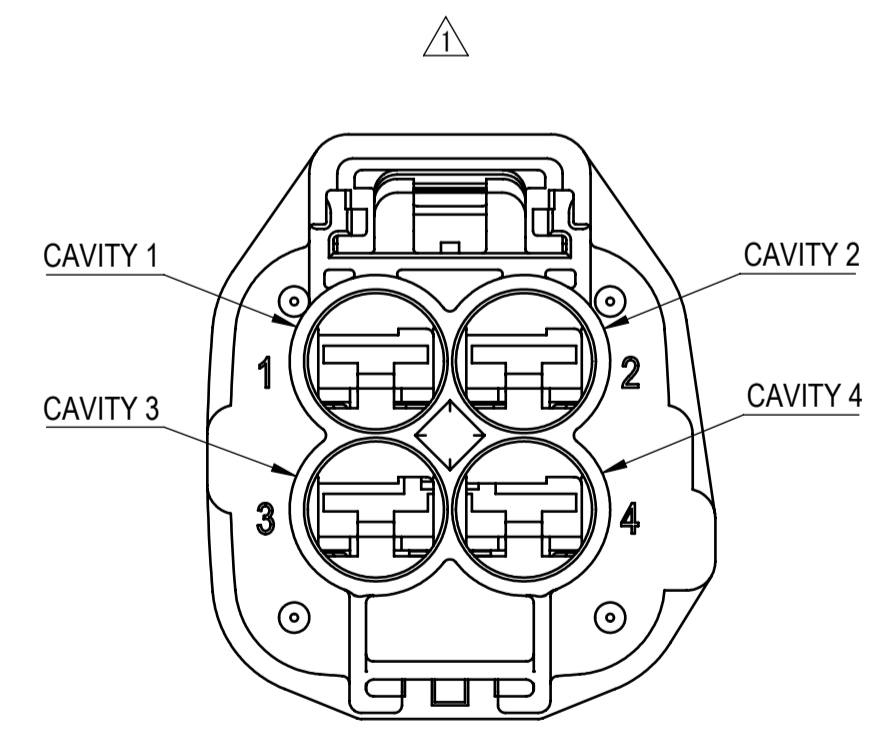
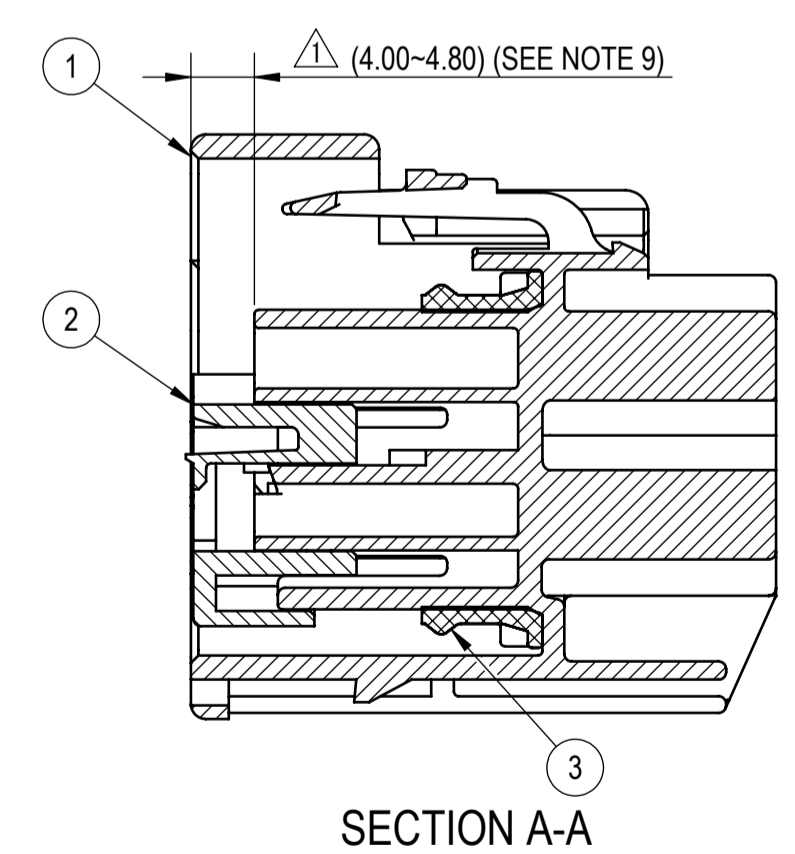
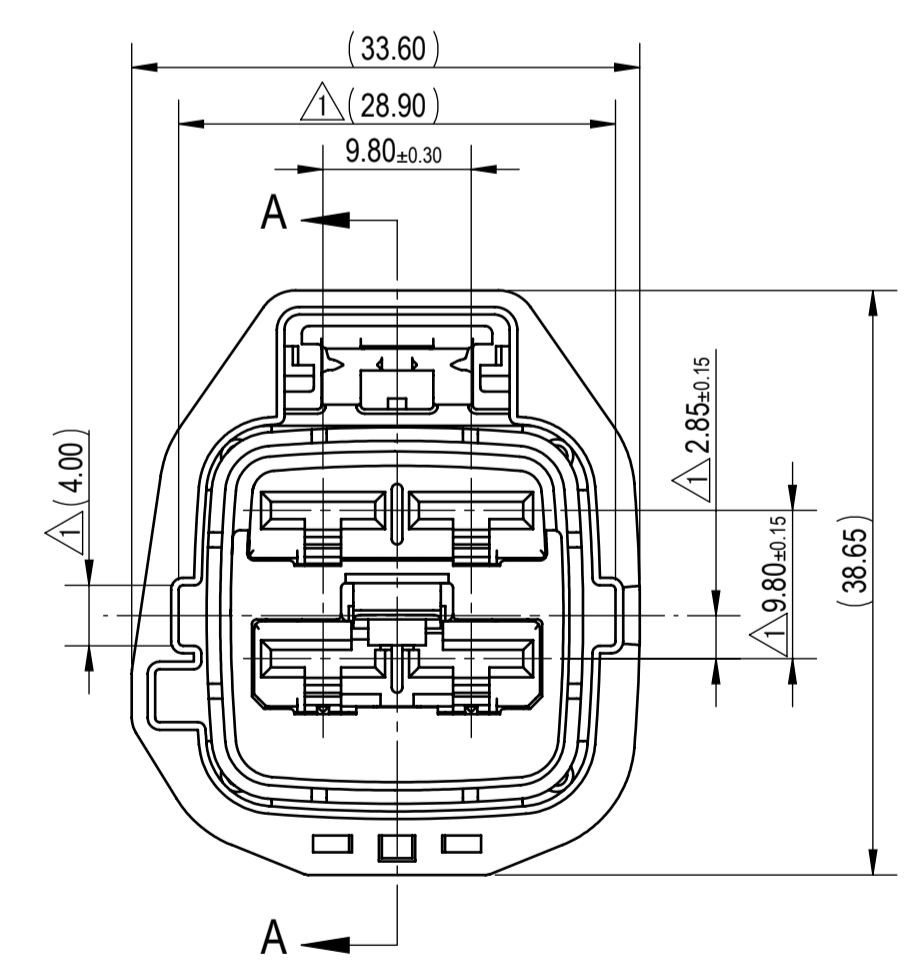
FRONT ISOMETRIC VIEW (1/1)

△ REAR ISOMETRIC VIEW (1/1)



NOTES:

1. PARTS MUST BE PURCHASED FROM YAZAKI.
2. PARTS MUST BE FREE OF FLASH AND IMPERFECTIONS THAT AFFECT FUNCTION.
- △ 3. APPLICABLE TERMINAL: SEE 7116-4140-02:R DRAWING (6.3mm YESC SEALED, Sn-PLATE) SEE 7116-7142-06:R DRAWING (6.3mm YESC SEALED, Ag-PLATE) MAX WIRE OD: 4.30mm MIN WIRE OD: 1.40mm
- △ 4. APPLICABLE WIRE SEAL: SEE 7158-3081-50:R AND 7158-3084-40:RA DRAWINGS (6.3mm YESC SEALED)
5. APPLICABLE CAVITY PLUG: SEE 7158-3080-60:R DRAWING (6.3mm YESC SEALED)
6. MATING PART NUMBER: 7282-5595-10
7. PART SATISFIES USCAR-2, REVISION 4, MAY 2004, (T3/V2/S2/MF3)
8. PART TO COMPLY WITH YPES-31-038 REQUIREMENTS.
9. THIS DIMENSION SHOWS THE PRE-SET POSITION OF THE TPA.
10. THIS DIMENSION SHOWS THE PRE-SET POSITION OF THE CPA.
11. THIS DRAWING IS TO BE USED FOR INTERNAL YAZAKI PSW SUBMISSION.
- △ 12. CLIP SLOT: 11mm CLIP SLOT. (BASED ON USCAR 11mm CLIP SLOT, EWCAP-005-11, REV C)
- △ 13. HANDLING MANUAL NUMBER: YPES-15-300E



| △ | DATE       | REVISION RECORD  | NO.      | CHKD |
|---|------------|--|----------|------|
| △ | 06-08-2018 | UPDATED APPLICABLE WIRE SEAL NOTE, UPDATED TO THE LATEST STANDARDS | C18-A499 | S.A. |
| - | 07-22-2009 | NEW  | C09-A551 | M.R. |

| GENERAL TOLERANCE |       |       |        |        |        |        |         |         |         |       |        |           |
|-------------------|-------|-------|--------|--------|--------|--------|---------|---------|---------|-------|--------|-----------|
|                   | 10MAX | 50MAX | 100MAX | 250MAX | 250OVR | R5 MAX | R10 MAX | R20 MAX | R20 OVR | ANGLE | ECCENT | MASS      |
| A                 | ±0.15 | ±0.20 | ±0.30  | ±0.50  | ±0.75  |        |         |         |         | ±3°   | 0.1    | SEE TABLE |
| B                 | ±0.20 | ±0.30 | ±0.55  | ±0.95  | ±1.40  | ±0.20  | ±0.30   | ±0.50   | ±2.50   | ±3°   | 0.15   |           |
| Ⓒ                 | ±0.30 | ±0.50 | ±0.80  | ±1.40  | ±2.00  |        |         |         |         |       |        |           |

| CUSTOMER          |  | CUSTOMER DWG. NO. |  | MATERIAL SPEC.  |  | TREAT. & FIN. |  |
|-------------------|--|-------------------|--|---|--|---------------|--|
| CUSTOMER PART NO. |  | CUSTOMER DWG. NO. |  | SEE TABLE   |  | N/A           |  |
| OFFICE YNA        |  | TRIAL PART NO.    |  | NAME 4P 6.3mm YESC SEALED FEMALE CONNECTOR SUB-ASSEMBLY |  |               |  |
| VENDOR            |  | VENDOR NO.        |  | PART NO. 7283-3108-10, ETC.                             |  |               |  |
|                   |  |                   |  | DWG NO. 7283-3108-10:R                                  |  |               |  |
|                   |  |                   |  | YAZAKI CORPORATION                                      |  |               |  |