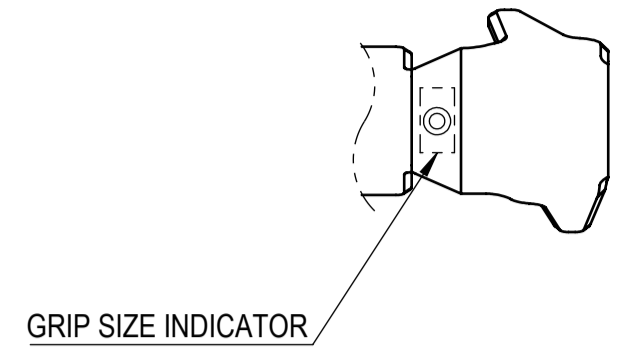


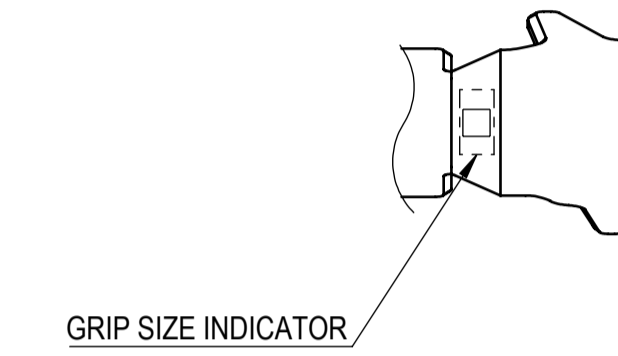
APPLICABLE WIRE GRIP SIZE IDENTIFICATION

(10/1)



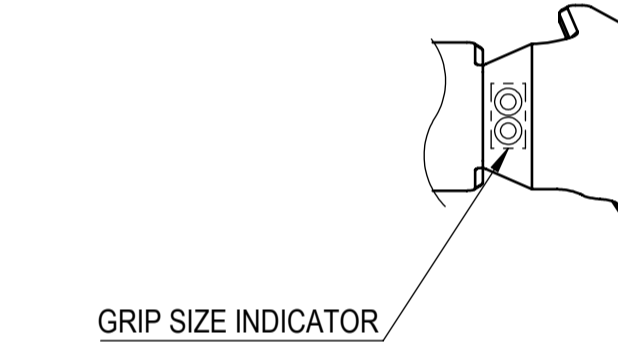
7195-1963-02

(10/1)



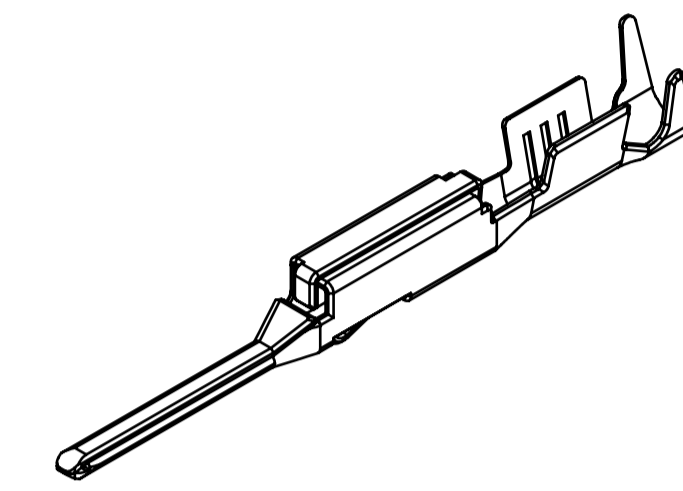
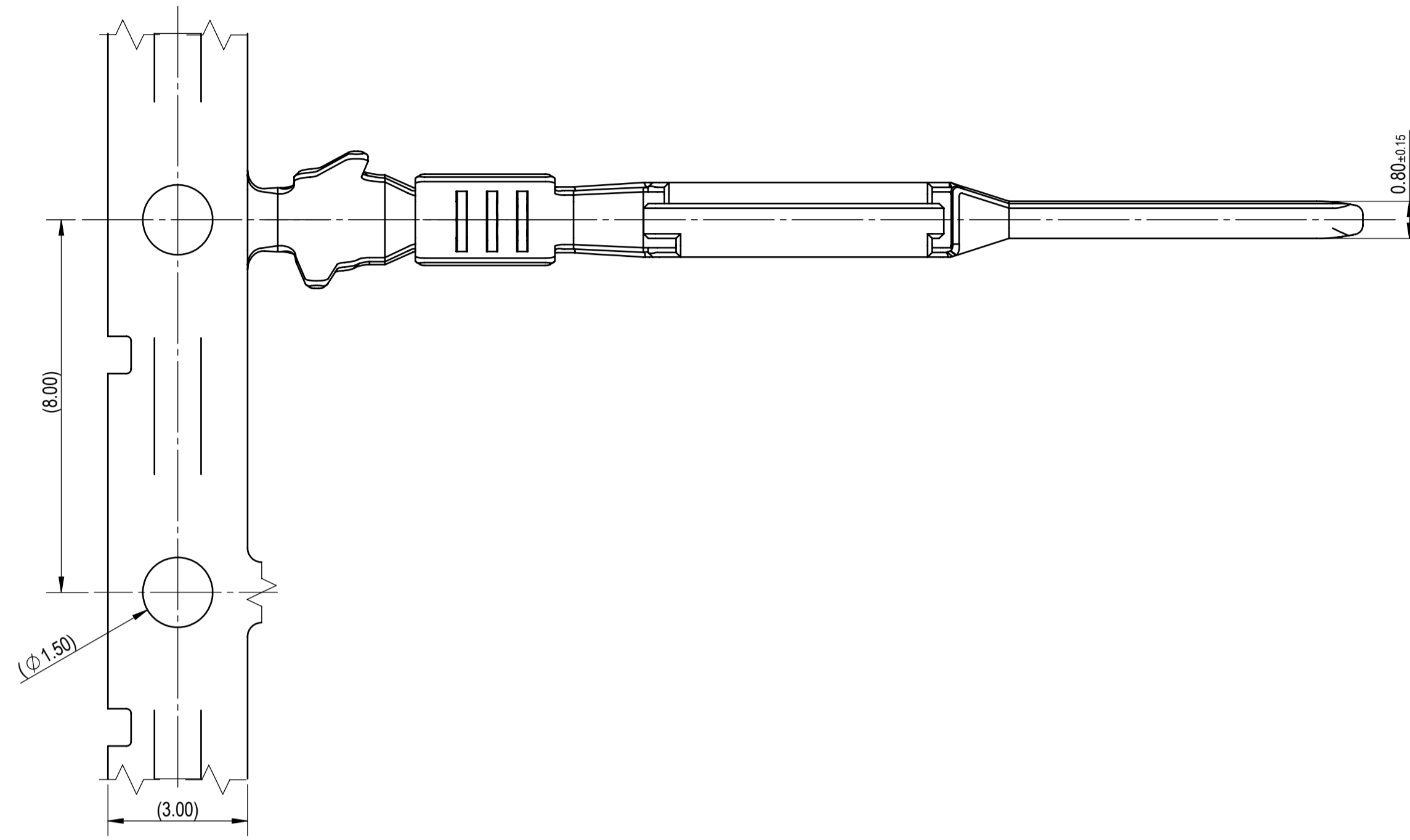
7195-1964-02

(10/1)

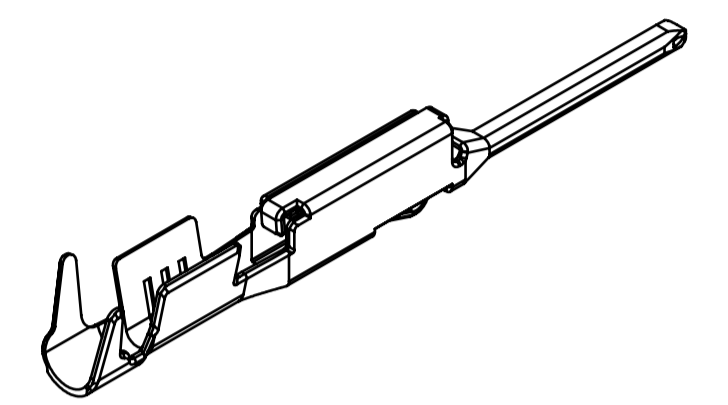


7195-1965-02

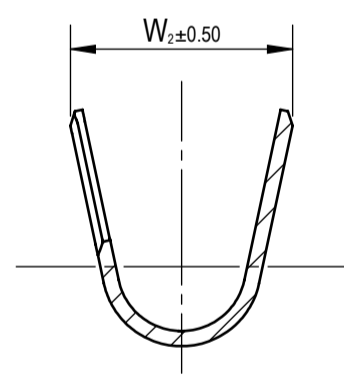
PART NUMBER	GRIP SIZE	PLATING	APPLICABLE WIRE SIZE (SINGLE CRIMP)		GRIP DIMENSIONS		MASS (g)
			METRIC (mm ²)	INSULATION O.D (mm)	W ₁	W ₂	
7195-1963-02 (NOT AVAILABLE)	SMALL	Sn	0.13	0.85-1.05	1.38	1.70	(0.13)
7195-1964-02	MEDIUM	Sn	0.35-0.50	1.10-1.60	1.82	2.45	(0.15)
7195-1965-02	LARGE	Sn	0.75	1.70-1.90	1.96	2.94	(0.16)



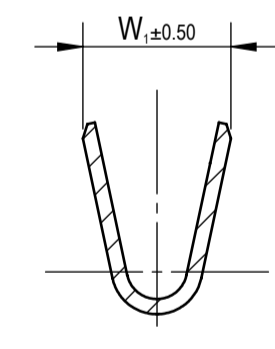
FRONT ISOMETRIC VIEW (5/1)



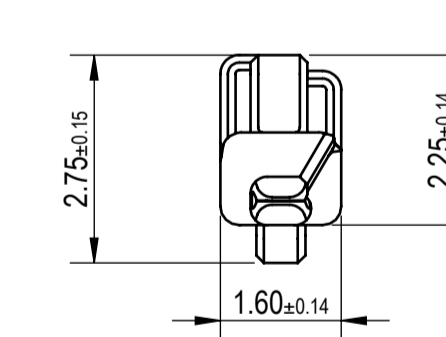
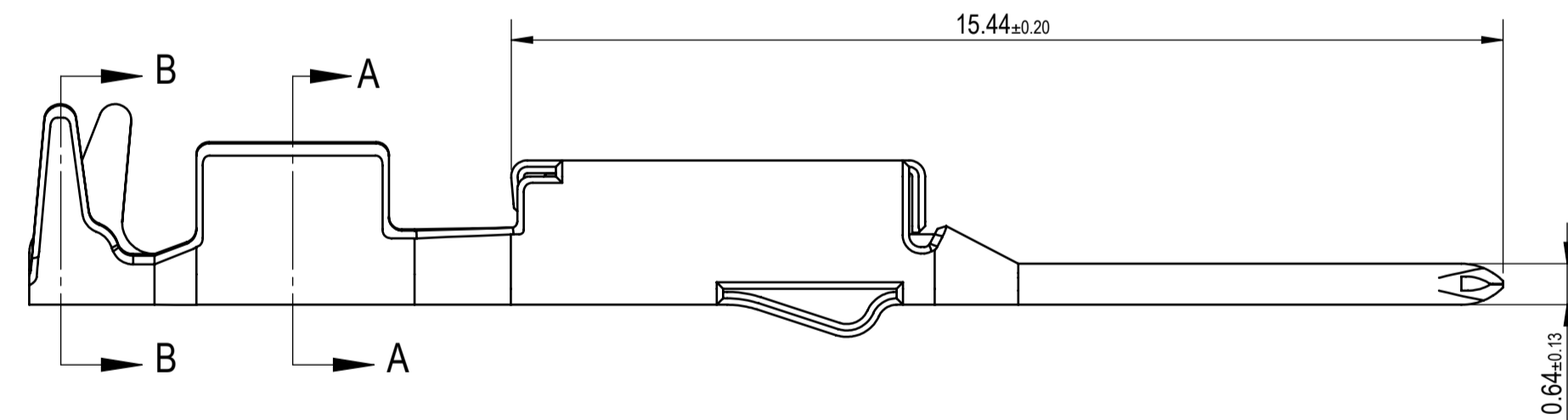
REAR ISOMETRIC VIEW (5/1)



SECTION B-B



SECTION A-A



NOTES:

- PARTS MUST BE PURCHASED FROM YAZAKI.
- PARTS MUST BE FREE OF BURRS AND SHARP EDGES THAT MAY BE DETRIMENTAL TO SATISFACTORY ASSEMBLY, SAFE HANDLING OR FUNCTION OF THE PART.
- MATERIAL: COPPER ALLOY.
- PLATING: SEE TABLE.
- APPLICABLE WIRE SIZE: SEE TABLE.
- MATING PART NUMBER: SEE 7196-0187-02:R DRAWING (TAB UP) 7196-0191-02:R DRAWING (TAB DOWN)
- PART TO COMPLY WITH YPES-31-038 REQUIREMENTS.
- THIS DRAWING IS TO BE USED FOR INTERNAL YAZAKI PSW SUBMISSION.
- HANDLING MANUAL NUMBER: YPES-15-1321E

ISSUE MARK

CUSTOMER		CUSTOMER DWG. NO.		MATERIAL SPEC.		SEE NOTES		TREAT. & FIN.		SEE NOTES	
OFFICE		TRIAL PART NO.		NAME							
YNA				0.64mm FLX UNSEALED MALE TERMINAL							
VENDOR				PART NO.		7195-1965-02, ETC.					
VENDOR NO.				CH. CODE		7195-1965-02:R					
				DWG NO.		7195-1965-02:R					
				YAZAKI CORPORATION							

GENERAL TOLERANCE											
	10MAX	50MAX	100MAX	250MAX	250OVR	R5 MAX	R10 MAX	R20 MAX	R20 OVR	ANGLE	ECCENT
A	±0.15	±0.20	±0.30	±0.50	±0.75					±3°	0.1
B	±0.20	±0.30	±0.55	±0.95	±1.40	±0.20	±0.30	±0.50	±2.50	±3°	0.15
Ⓒ	±0.30	±0.50	±0.80	±1.40	±2.00					±3°	0.15
MASS (SEE TABLE)											

10-25-2021	NEW	C21-A766	F.R.
LET	DATE	REVISION RECORD	CHKD