

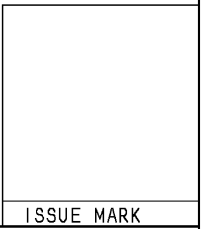
| | |
|-----------------|---------|
| YAZAKI PART NO. | COLOR |
| 7183-4020 | NATURAL |
| 7183-4020-30 | BLACK |
| 7183-4020-60 | GREEN |

注 記

- 1. かん合相手品番 : 7182-4020 ETC., 7122-8326 ETC.
- △ 2. 適用ターミナル品番 : 7116-1486-02, 7116-1486-08
7116-1487-02
- 3. 適用リヤホルダ品番 : 7157-4580-80

NOTES

- 1. MATING PART NO. : 7182-4020 ETC., 7122-8326 ETC.
- △ 2. APPLICABLE TERMINAL NO. : 7116-1486-02, 7116-1486-08
7116-1487-02
- 3. APPLICABLE REAR HOLDER NO. : 7157-4580-80



| | | | | | | | | | | | | |
|-------------------|------------|--|----------|--------|-------------------|--------------------------------|----------|---------------|------------|--------------|---------------------|----------------|
| △ | 10. 11. 15 | CHANGED PART NAME | C10-ZB07 | R. B | CUSTOMER | MATL. SPEC. | PBT | TREAT. & FIN. | | | | |
| △ | 93. 03. 26 | CHANGED TERMINAL PART NO. & CHANGED FORM | C93-6392 | T. M | CUSTOMER PART NO. | NAME △ SDLII HOUSING 2P FEMALE | | | | | | |
| | 92. 04. 28 | NEW | C92-L199 | S. I | OFFICE | TRIAL PART NO. ----- | | | | | | |
| LET | DATE | REVISION RECORD | NO. | CHKD | VENDOR | VENDOR NO. ----- | | | | | | |
| GENERAL TOLERANCE | | | | | DWG TYPE | DWG SOURCE | DWG DATE | UNIT | SCL | ANGLE | PART NO. | 7183-4020 ETC. |
| A | ±0. 15 | ±0. 2 | ±0. 3 | ±0. 5 | ±0. 75 | ±30' | 0. 1 | R | NEW | 92. 04. 28 | mm | 2/1 3 |
| B | ±0. 2 | ±0. 3 | ±0. 55 | ±0. 95 | ±1. 4 | ±30' | 0. 1 | APPROVED | CHECKED | CHECKED | DESIGN | DRAWN |
| © | ±0. 3 | ±0. 5 | ±0. 8 | ±1. 4 | ±2 | ±30' | 0. 15 | S. MIZUSE | ----- | R. DE GUZMAN | M. ABE | R. BUCE |
| SPECIFIED | | | | | MASS | 10. 11. 15 | ----- | 10. 11. 15 | 91. 10. 25 | 10. 11. 15 | DWG NO. 7183-4020:R | |
| | | | | | | | | | | | YAZAKI CORPORATION | |

1

2

3

