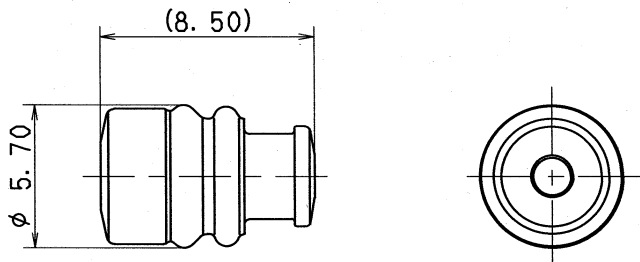


RUBBER PART GENERAL TOLERANCE				
PART DIM.	1	2	③	
0 TO 3	± 0.2	± 0.3	± 0.4	
3 TO 6	± 0.2	± 0.4	± 0.5	
6 TO 10	± 0.3	± 0.5	± 0.6	
10 TO 18	± 0.3	± 0.6	± 0.8	
18 TO 30	± 0.4	± 0.8	± 1.0	
30 TO 50	± 0.5	± 1.0	± 1.5	
50 TO 80	± 0.6	± 1.2	± 2.0	
80 TO 120	± 0.7	± 1.4	± 2.5	
120 TO 180	± 0.8	± 1.6	± 3.0	
180 TO 250	± 1.0	± 2.0	± 4.0	
250 TO 315	± 1.2	± 2.5	± 5.0	
315 TO 400	± 1.5	± 3.0	± 6.0	
400 TO 500	± 1.8	± 3.5	± 7.0	
500 OVER	± 0.4 %	± 0.8 %	± 1.5 %	



注記

- △ 1. 適用電線サイズ: AVS 0.5~0.85  
: AVSS/CAVS 1.25  
: CHFUS 1.5 HFSS 1~1.5
- △ 2. ( ) 内品番は、エアバック (A/B) 回路及び特別管理回路に使用する時に適用すること。

NOTES

- △ 1. APPLICABLE WIRE SIZE: AVS 0.5~0.85  
: AVSS/CAVS 1.25  
: CHFUS 1.5 HFSS 1~1.5
- △ 2. ( ) PART NO. IS USED FOR PARTS ASSOCIATED WITH A/B CIRCUITS OR OTHER SPECIFIED CIRCUIT.

△	05/01/27	CHANGED NOTE, ETC.	C05-Z155	H. T	CUSTOMER		MATL. SILICONE RUBBER		TREAT.					
△	04/04/08	CHANGED NOTE, NAME & ADDED NOTE, A/B PART NO.	C04-X219	H. T	CUSTOMER PART NO.		SPEC. (DARK GRAY)		& FIN.					
	95/08/24	NEW	C95-M259	K. O	OFFICE		NAME △ 2.3II (090II) 6mm pitch RUBBER							
LET	DATE	REVISION RECORD	NO.	CHKD	VENDOR		TRIAL PART NO.		STOPPER (M SIZE)					
GENERAL TOLERANCE					VENDOR NO.									
	10MAX	50MAX	100MAX	250MAX	2500VR	ANGLE	ECCENT	DWG TYPE	DWG SOURCE	DWG DATE	UNIT	SCL	ANGLE	PART NO.
A	±0.15	±0.2	±0.3	±0.5	±0.75	±30'	0.1	R	NEW	95/08/03	mm	5:1	3	△ 7158-3007-10 (7B58-3007-10)
B	±0.2	±0.3	±0.55	±0.95	±1.4	±30'	0.1	APPROVED	CHECKED	CHECKED	DESIGN	DRAWN	DWG NO.	7158-3007-10:R
C	±0.3	±0.5	±0.8	±1.4	±2	±30'	0.15				MAEDA	A. PACABIS	SET DWG NO.	
SPECIFIED					MASS									YAZAKI CORPORATION
					g	'05.01.28					94/09/27	05/01/27		

