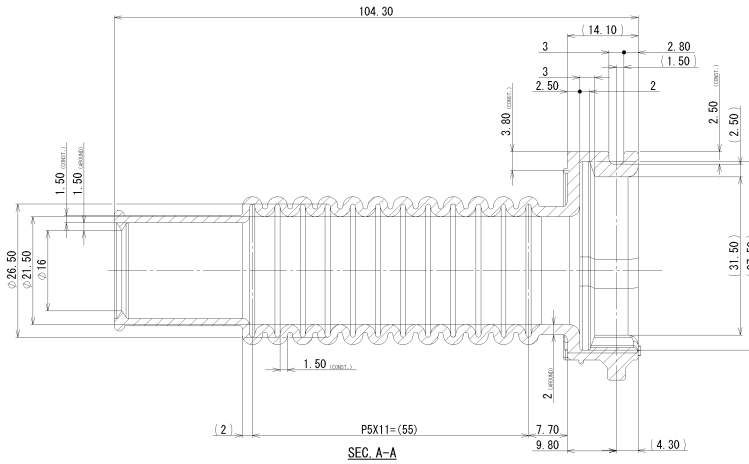
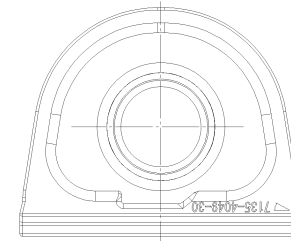
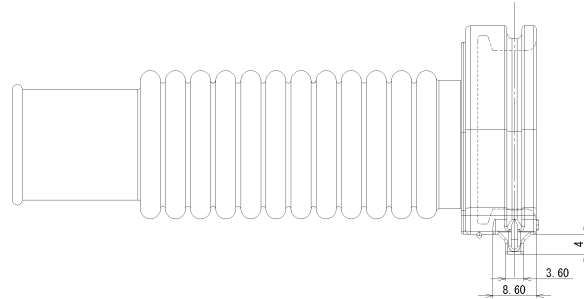
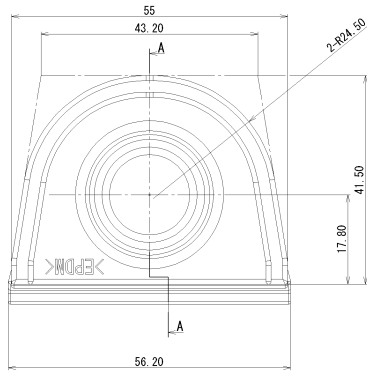


RUBBER PART GENERAL TOLERANCE				
PART DIM.	1	2	3	④
0 TO 3	±0.2	±0.3	±0.4	
3 TO 6	±0.2	±0.4	±0.5	
6 TO 10	±0.3	±0.5	±0.6	
10 TO 18	±0.3	±0.5	±0.8	
18 TO 30	±0.4	±0.8	±1.0	
30 TO 50	±0.5	±1.0	±1.5	
50 TO 80	±0.6	±1.2	±2.0	
80 TO 120	±0.7	±1.4	±2.5	
120 TO 180	±0.8	±1.6	±3.0	
180 TO 250	±1.0	±2.0	±4.0	
250 TO 315	±1.2	±2.5	±5.0	
315 TO 400	±1.5	±3.0	±6.0	
400 TO 500	±1.8	±3.5	±7.0	
500 OVER	±0.4%	±0.8%	±1.5%	



注 記  
 1. 適合相手品番  
 GROMMET INNER : 7158-9541  
 CONNECTOR BOX SUB ASSY : 7254-8446-0V

NOTE  
 1. MATCHING PART NO.  
 GROMMET INNER : 7158-9541  
 CONNECTOR BOX SUB ASSY : 7254-8446-0V

LET	DATE	REVISION RECORD	NO.	CHKD
	06.05.15	NEW	006-1A94	R. K

GENERAL TOLERANCE						
	TOMAX	SOMAX	LOOMAX	250MAX	2500R	ANGLE
A	±0.15	±0.2	±0.3	±0.5	±0.75	±30°
B	±0.2	±0.3	±0.5	±0.95	±1.4	±30°
C	±0.3	±0.5	±0.8	±1.4	±2	±30°
SPECIFIED						SEE RUBBER GENERAL TOLERANCE TABLE
						31 g

CUSTOMER		CUSTOMER PART NO.		CUSTOMER DRG NO.		MATL. EPDM (BLACK)		TREAT. & FIN.	
OFFICE		TRIAL PART NO.		NAME		SPEC. 硬度 50		GROMMET	
VENOR NO.		X3045-1029							
DWG TYPE	DWG SOURCE	DWG DATE	UNIT	SCL	ANGLE	PART NO.	CH. CODE	7135-4049-30	
R	NEW	06.05.15	mm	2:1	3	7135-4049-30		7135-4049-30-R	
APPROVED	CHECKED	CHECKED	DESIGN	DRAWN	DWG NO.	GROMMET INNER		SET DWG NO.	
T. SUZUKI	H. SATO		T. ISHIMARU	R. KAWAI	05.09.27	06.05.15		YAZAKI CORPORATION	

ISSUE MARK