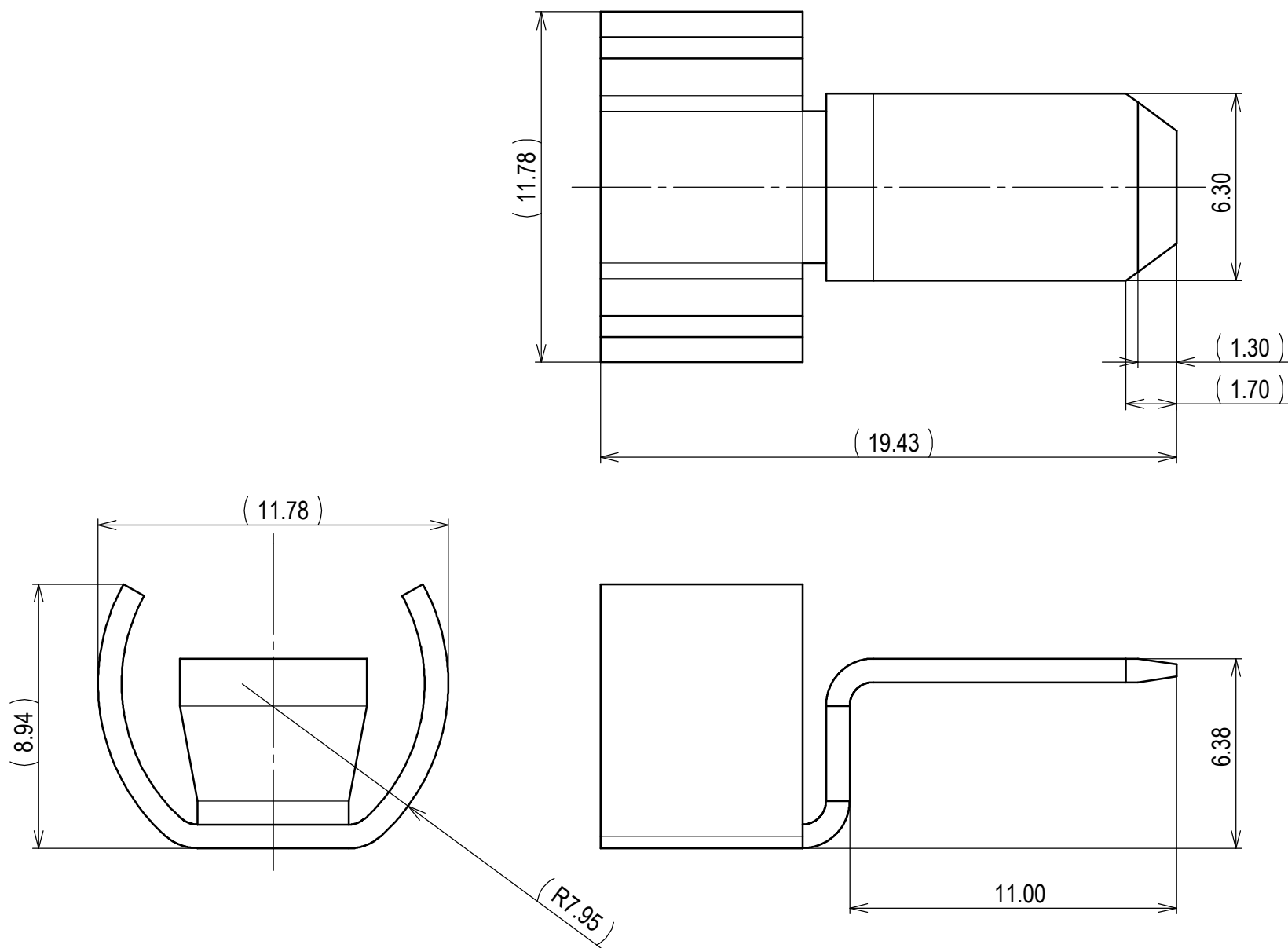


B

B



NOTES

- 1. PART MUST BE FREE OF CRACKS AND BURRS THAT AFFECT FUNCTION.
- 2. MATERIAL: C194 1/2 H T=0.8 ±0.05mm
- 3. MATERIAL PLATING: PRE-SN 0.8-3.0µm (REFLOW)
- 4. FOR REFERENCE ONLY MATING PART LITTLEFUSE PART# OHEV.SXBDY

ISSUE MARK

A

A

								CUSTOMER -				MATL. SPEC.		TREAT. & FIN.					
								CUSTOMER PART NO.				SEE NOTE 2		SEE NOTE 3					
								OFFICE YNA				NAME AC FUSE TERMINAL							
								VENDOR -				TRIAL PART NO.							
								VENDOR NO. -											
GENERAL TOLERANCE								DWG TYPE		DWG SOURCE		DWG DATE		UNIT		SCL		ANGLE	
	10MAX	50MAX	100MAX	250MAX	250OVR	ANGLE	ECCENT	M	NEW	11.09.10	mm	5:1	3	PART NO.		7126-8061-02			
A	±0.15	±0.2	±0.3	±0.5	±0.75	±30'	0.1	APPROVED		CHECKED	CHECKED	DESIGN	DRAWN	DWG NO.		7126-8061-02:R			
B	±0.2	±0.3	±0.55	±0.95	±1.4	±30'	0.1					T. JETTON	M.MANOR	SET DWG NO.		-			
(C)	±0.3	±0.5	±0.8	±1.4	±2	±30'	0.15					11.09.10	2/24/2012	YAZAKI CORPORATION					
SPECIFIED							MASS												
							2.03 g												

