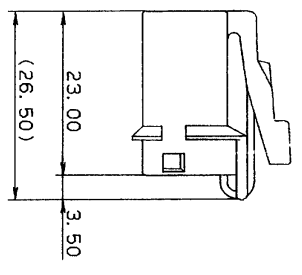
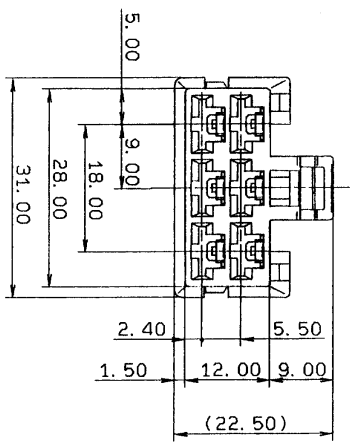
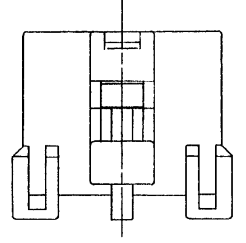


MARK	PART NO.	COLOR	MATING PART NO.
M06FW	7123-6060	NATURAL	7122-6060
M06FW-GY	7123-6060-40	GRAY	7122-6060-40

- 注 記
- 1) 適用端子品番: 7116-2870, 7116-2871, 7116-2872
 - 2) 適用リヤホルダ品番: 7157-6260-30

- NOTES
- 1) APPLICABLE TERMINAL NO. :
7116-2870, 7116-2871, 7116-2872
 - 2) APPLICABLE REAR HOLDER NO. :
7157-6260-30



REV	DATE	REVISION RECORD	NO.	CHNG
88.12.12		NEW	BMC-3159	T.M

GENERAL TOLERANCE		ANGLE		ECCENT		WEIGHT	
A	±0.15	±0.2	±0.3	±0.5	±0.75	±30°	0.1
B	±0.2	±0.3	±0.55	±1.4	±2	±30°	0.1
C	±0.3	±0.5	±0.8	±1.4	±2	±30°	0.15

CUSTOMER PART NO.	CUSTOMER DWG NO.	MATL.	NYLON	TREAT.	ISSUE MARK
OFFICE	STDLIB NO.	NAME	M TYPE CONNECTOR HOUSING		
VENDOR NO.			6PF (W)		
DWG TYPE	DWG SOURCE	DWG DATE	UNIT	SCL	ANGLE
R	NEW	88.11.19	7121	27	3
APPROVED	CHECKED	CHECKED	DESIGN	PART NO.	
<i>K. Sato</i>	<i>M. Yagi</i>	<i>M. Yagi</i>	SAKAI	7123-6060 ETC.	
				DWG NO.	TRIAL PART NO.
				7123-6060-R	
				YAZAKI CORPORATION	

1 2 3 4 5