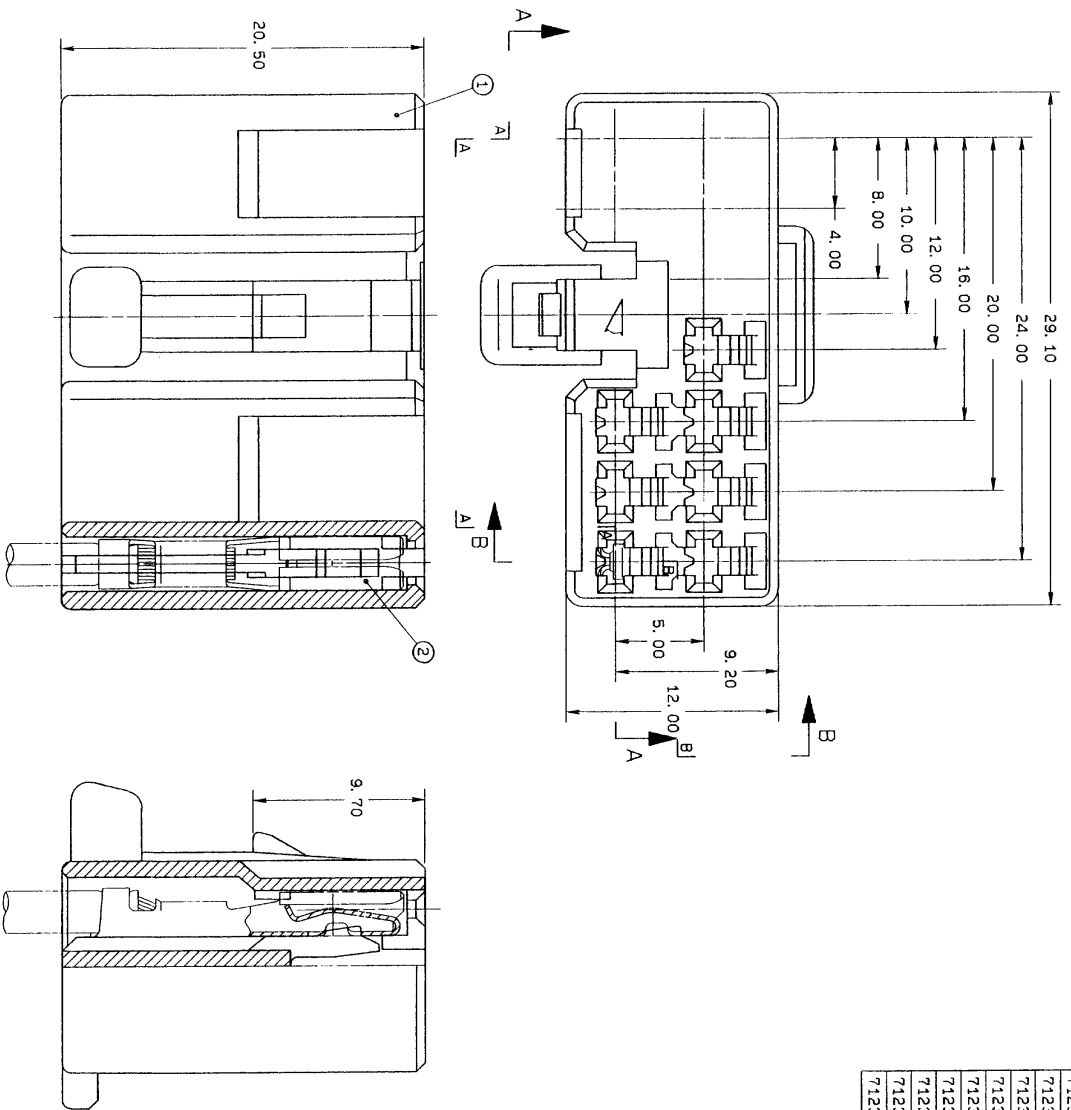


NO.	YAZAKI NO.	NAME	MATL&SPEC	REMARKS	LET DATE	REVISION RECORD	NO.	CHKD
1	7123-1210 ETC.	12P 090 FEMALE HOUSING	NYLON-66		83.08.30	NEW	083-6081	T.Y.
2	7116-1180 ETC.	090 FEMALE	BSR T=0.25		88.02.09	ADDED PART NO.	8MC-0402	H.Y.

YAZAKI NO.	COLOR
7123-1210	NATURAL
7123-1210-30	BLACK
7123-1210-40	GRAY
7123-1210-50	ORANGE
7123-1210-60	GREEN
7123-1210-70	YELLOW
7123-1210-80	BROWN
7123-1210-90	BLUE
7123-1210-10	DARK GRAY



NOTE
 1) MATING PART NO. 7122-1210ETC.
 注記
 1) 嵌合相手品番 7122-1210ETC.

APPROVED	CHKD	CHKD	DESIGN	DRAWN
加藤	加藤	加藤	KANEKO	加藤
83.08.04	83.08.04	88.08.03	82.05.10	83.07.28
GENERAL TOLERANCE				
10MAX 150MAX 100MAX 250MAX 250OVR ANGLE 1ECCENT				
A	±0.15	±0.2	±0.3	±0.5
B	±0.2	±0.3	±0.55	±0.95
Ø	±0.3	±0.5	±0.8	±1.4
SPECIFIED				
DWG SOURCE NEW				
OFFICE NEW				
DWG DATE 83.08.20				
CUSTOMER				
CUSTOMER PART NO.				
CUSTOMER DWG NO.				
VENDOR				
VENDOR NO.				
TRIAL PART NO.				
DWG TYPE R				
UNIT MM				
SCALE 5/1				
ANGLE 3				
MATL&SPEC NYLON-66				
TREATMENT&FINISH				
NAME 12P 090 FEMALE HOUSING				
YAZAKI NO. 7123-1210 ETC.				
DWG NO. 7123-1210 R				
YAZAKI CORPORATION				