

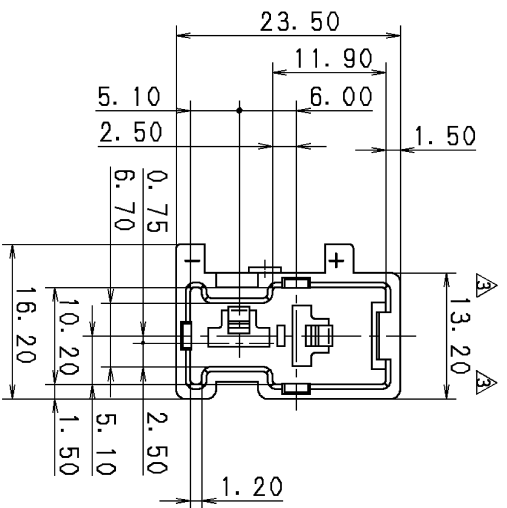
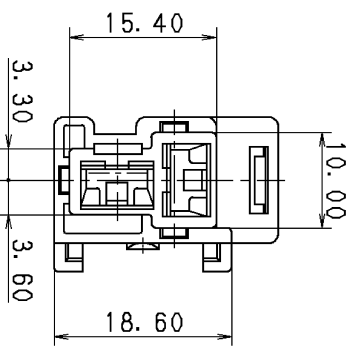
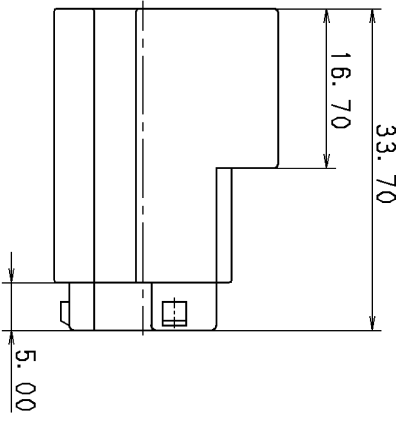
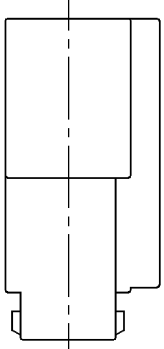
△ YAZAKI PART NO.	COLOR
7122-6020, □	NATURAL
7122-6020-40, ▣	GRAY

注記

1. 通用オク-ミナル品番 : 7114-2870 ETC.
2. カムメカメカナル品番 : 7123-6020
3. 適用リヤル品番 : 7157-6220-30

△ NOTES

1. APPLICABLE MALE TERMINAL NO. : 7114-2870 ETC.
2. MATING FEMALE HOUSING NO. : 7123-6020
3. APPLICABLE REAR HOLDER NO. : 7157-6220-30



△ 11.01.14	CHANGED PART NAME	C11-ZA30	C. S	CUSTOMER	CUSTOMER PART NO.	CUSTOMER DWG NO.	MATL. SPEC.	NYLON 6	TREAT. & FIN.	ISSUE MARK	
△ 96.04.12	CHANGED FORM, ▽	C96-L671	H. K	NAME	△ M TYPE HOUSING 2PM (W)						
△ 90.02.20	RENEW	C89-M290	H. Y	OFFICE	TRIAL PART NO.						
LET	DATE	REVISION RECORD		VENDOR NO.							
GENERAL TOLERANCE											
10MAX	50MAX	100MAX	250MAX	250OVR	ANGLE	ECCENT					
A ±0.15	±0.2	±0.3	±0.5	±0.75	±30'	0.1	DWG TYPE	R	DWG SOURCE	RENEW	
B ±0.2	±0.3	±0.55	±0.95	±1.4	±30'	0.1	APPROVED	S. MI ZUSE	CHECKED	R. DE GUZMAN	
③ ±0.3	±0.5	±0.8	±1.4	±2	±30'	0.15	UNIT	mm	DESIGN	S. INABA	
SPECIFIED							SCALE	2:1	DRAWN	C. SANJOAQUIN	
							PART NO.	7122-6020 ETC.			
							CH. CODE	△ 7122-6020:R			
							DWG NO.	YAZAKI CORPORATION			

