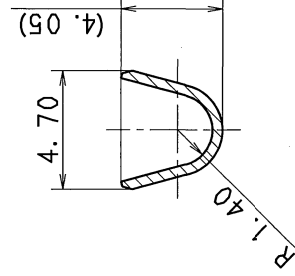
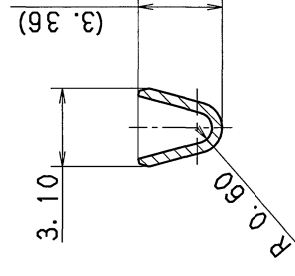
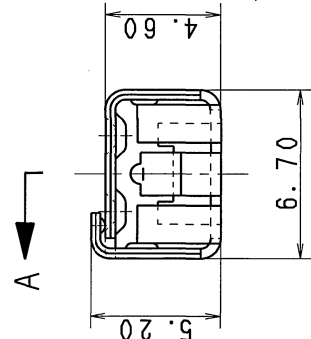
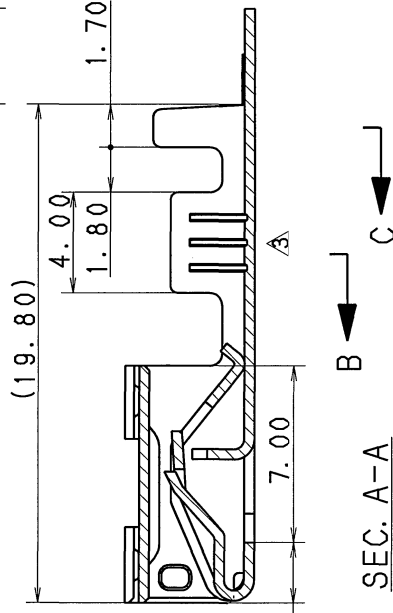
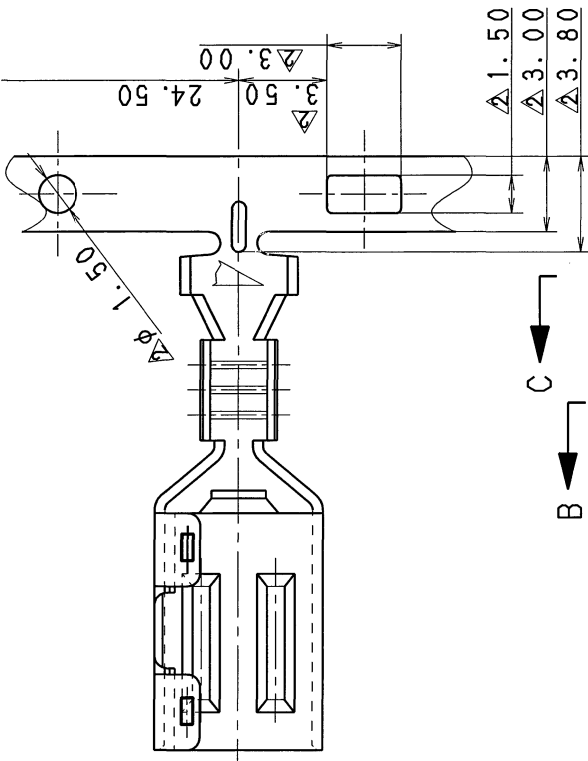


3

2

1

△ 注
 1. 取組手順書NO. : YPES-15-047
 △ NOTES
 1. HANDLING MANUAL NO. : YPES-15-047



△ SEC. C-C

△ SEC. B-B

SEC. A-A

△ 2015/05/06	CHANGED FORM, ETC.	C15-Z205	E. E	CUSTOMER	CUSTOMER DWG NO.	MATL. SPEC.	△ BRASS (t=0.40)	TREAT. & FIN.	△ TIN PLATING	ISSUE MARK
△ 2011/09/26	CHANGED NOTES ETC.	C11-Z650	R. B	CUSTOMER PART NO.		NAME	△ 5.2 POSITIVE LOCK TERMINAL			
△ 1994/03/02	ADDED SEC. B-B, C-C	C94-L361	H. F	OFFICE	TRIAL PART NO.	FEMALE				
1993/06/08	NEW	C93-L649	H. F	VENDOR						
LET	DATE	REVISION RECORD NO.	CHKD	VENDOR NO.						
GENERAL TOLERANCE										
10MAX	50MAX	100MAX	250MAX	2500VR	ANGLE	ECCENT				
A	±0.15	±0.2	±0.3	±0.5	±0.75	±30'	0.1	PART NO.	7116-7150	
B	±0.2	±0.3	±0.55	±0.95	±1.4	±30'	0.1	CH. CODE		SET DWG NO.
◎	±0.3	±0.5	±0.8	±1.4	±2	±30'	0.15	DWG NO.	7116-7150:R	
MASS SPECIFIED										
				S. SUZUKI	M. NAGANO	T. SHIMIZU	KAMEYAMA	E. EUGENIO	YAZAKI CORPORATION	
				2015/05/06	2015/05/06	2015/05/06	1985/07/02	2015/05/06		

3

2

1