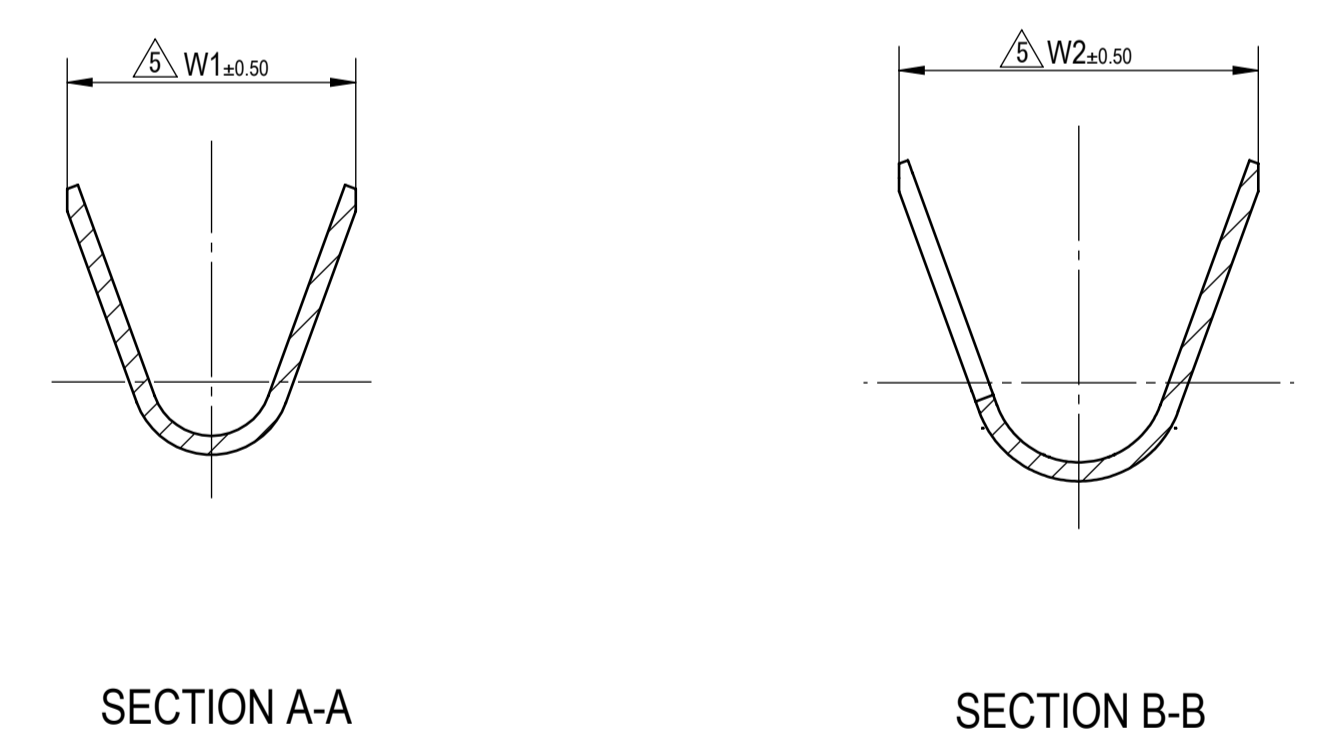
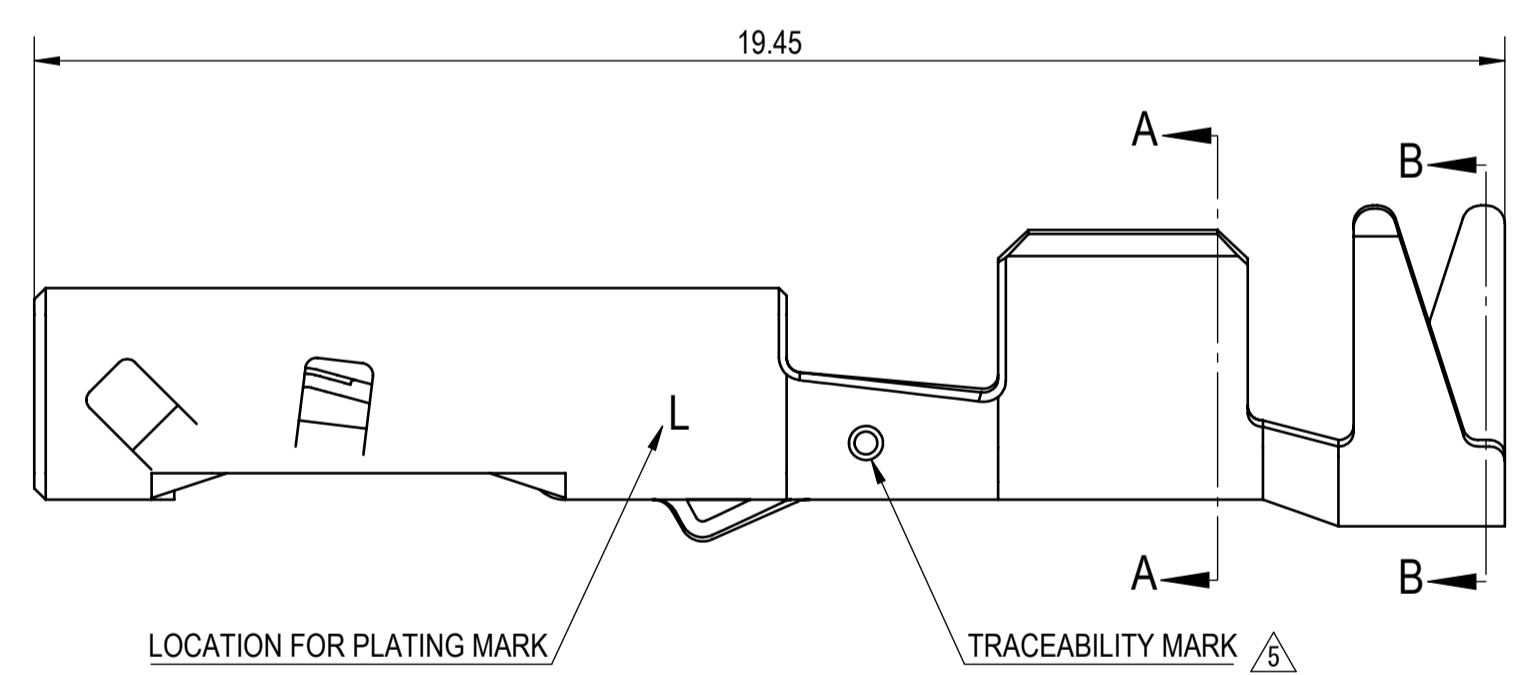
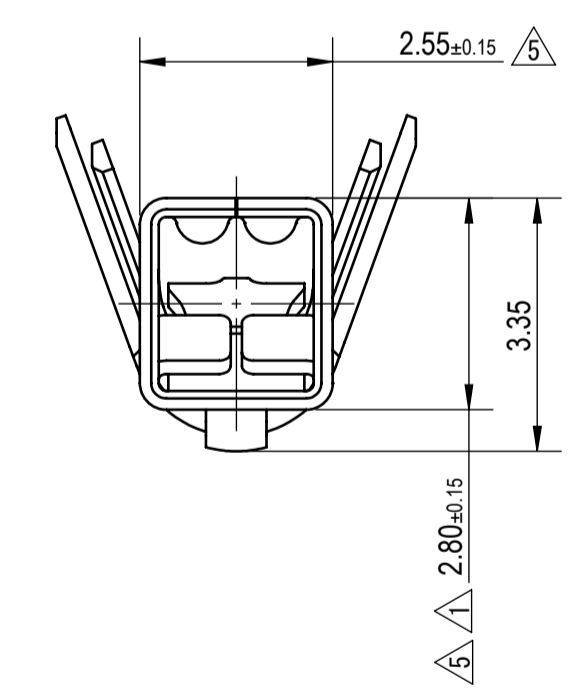
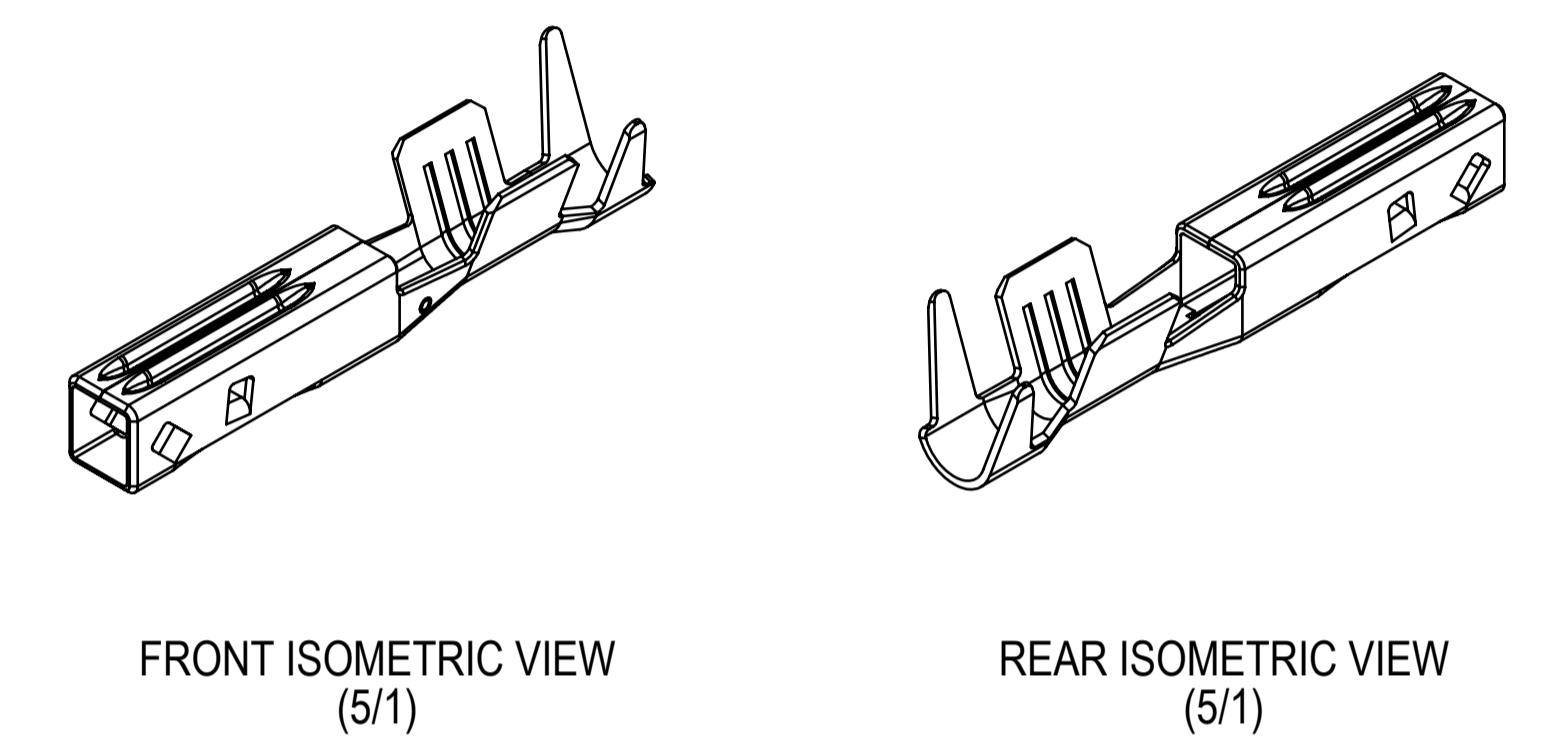
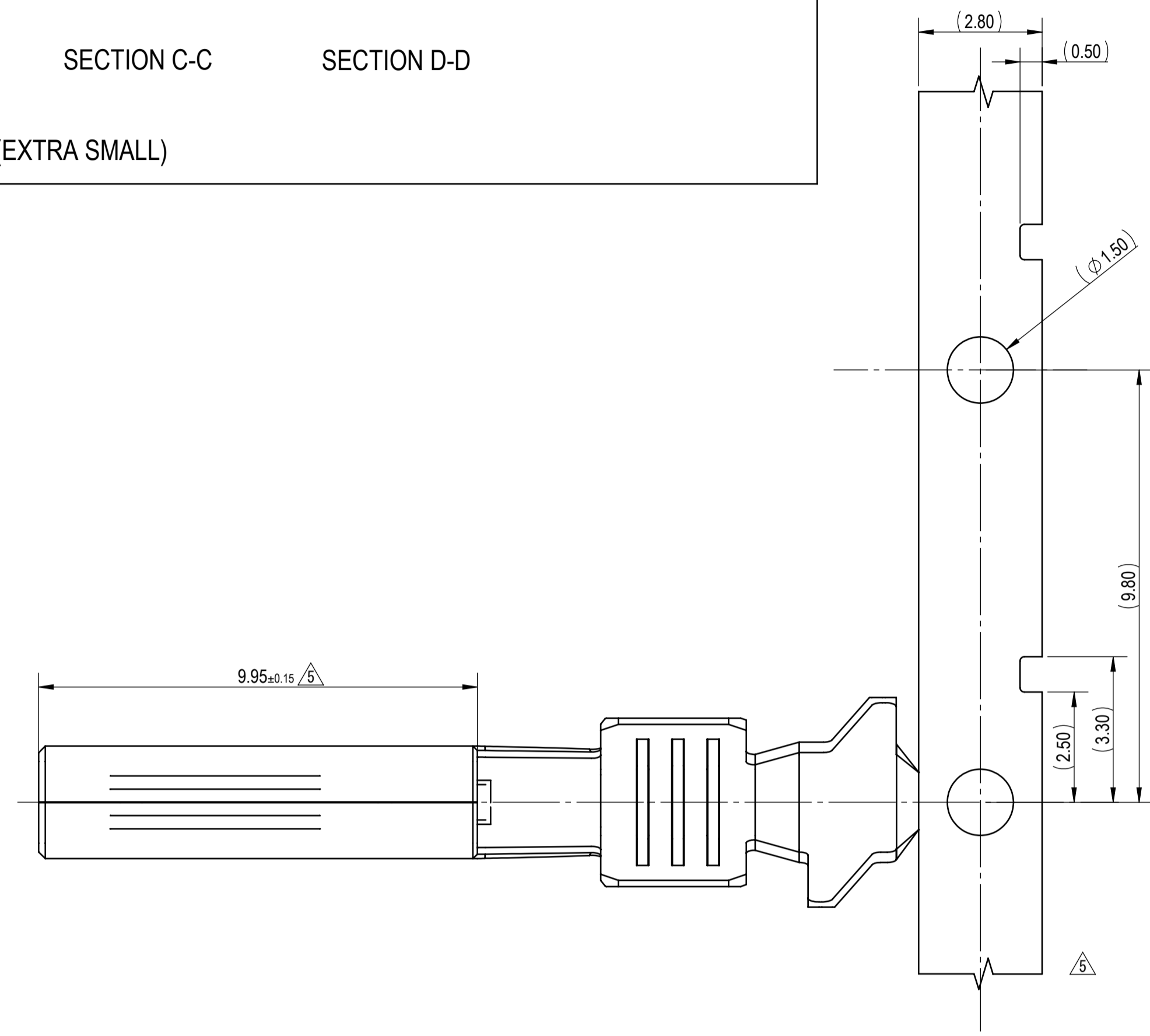
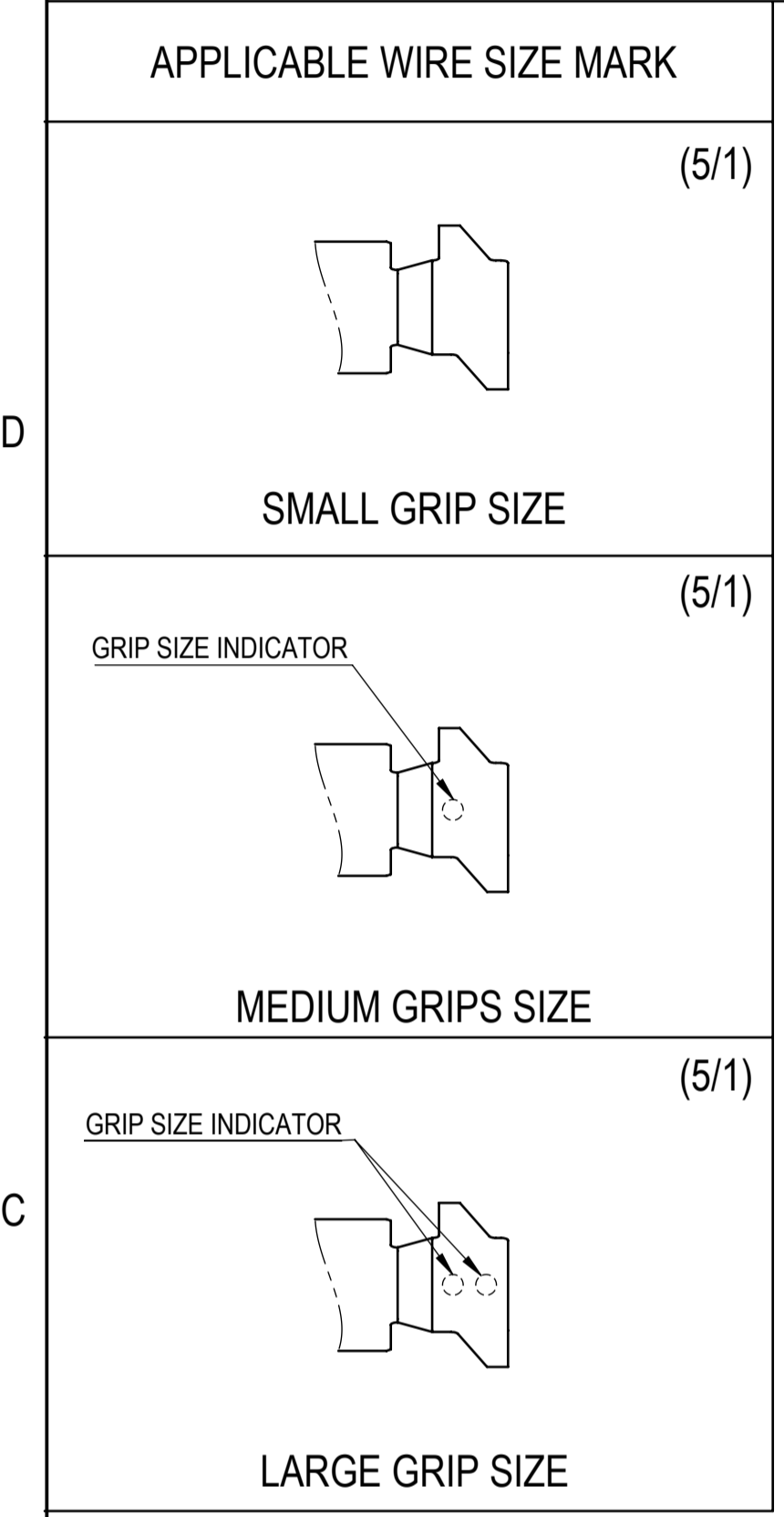


GRIP SIZE	PART NUMBER	PLATING (MARK)	GREASE	APPLICABLE WIRE SIZE (SINGLE CRIMP)			GRIP DIMENSIONS	
				AWG	ISO (mm²)	INSULATION (mm)	W1	W2
SMALL	7116-6315-02	Sn	N/A	22-20	0.35-0.50	1.20mm-1.90mm	2.15	3.10
	7116-6315-06	Ag (L)	N/A					
	7216-6315-02	Sn	761G					
MEDIUM	7296-0795-02	Sn	768G	18-16	0.75-1.0	1.70mm-2.34mm	2.65	3.90
	7116-6316-02	Sn	N/A					
	7116-6316-06	Ag (L)	N/A					
LARGE	7216-6316-02	Sn	761G	14	1.5-2.0	2.20mm-2.80mm	3.30	4.80
	7296-0796-02	Sn	768G					
	7116-6317-02	Sn	N/A					
EXTRA SMALL	7116-6317-06	Ag (L)	N/A	N/A	0.13	0.85mm-1.05mm	1.39	2.13
	7296-0797-02	Sn	768G					
	7116-6886-02	Sn	N/A					
	7216-6886-02	Sn	768G					



DATE	REVISION RECORD	NO.	CHKD
06-17-2024	REVISED PART NUMBER	C24-A393	AZ
03-23-2021	REDRAWN, ADDED TRACEABILITY MARK AND MASS, REVISED DIMENSIONS AND TABLE	C21-A259	AP
03-31-2016	UPDATED INSUL THICKNESS	C16-A273	KP
01-29-2016	ADDED GREASED VERSIONS, ISO WIRES	C16-A094	KP
05-09-2013	ADDED Ag PLATING, GREASED TERMINALS	C13-A281	MMR
11-03-2011	REVISED DIMENSION	C11-A942	MMR
05-09-2011	NEW	C11-A420	MMR

GENERAL TOLERANCE											
A	±0.15	±0.20	±0.30	±0.50	±0.75	±0.20	±0.30	±0.50	±2.50	±3°	0.1
B	±0.20	±0.30	±0.55	±0.95	±1.40	±0.20	±0.30	±0.50	±2.50	±3°	0.1
C	±0.30	±0.50	±0.80	±1.40	±2.00					±3°	0.15
LET	DATE	REVISION RECORD	NO.	CHKD	MASS (0.34) g						

- NOTES:
- PARTS MUST BE PURCHASED FROM YAZAKI.
 - PARTS MUST BE FREE OF BURRS AND SHARP EDGES THAT MAY BE DETRIMENTAL TO SATISFACTORY ASSEMBLY, SAFE HANDLING OR FUNCTION OF THE PART.
 - MATERIAL: COPPER ALLOY
 - PLATING: TIN PLATED (ALL OVER)
SILVER PLATED (INSIDE CONTACT AREA)
 - MATING PART NUMBER: SEE 7114-6317-02-R DRAWING.
 - PART TO COMPLY WITH YPES-31-038 REQUIREMENTS.
 - THIS DRAWING IS TO BE USED FOR INTERNAL YAZAKI PSW SUBMISSION.

CUSTOMER		CUSTOMER DWG NO.		MTRL SPEC.		SEE NOTES		TREAT. & FIN.		SEE NOTES	
OFFICE YNA		TRIAL PART NO.		NAME		YESC III 1.5mm SYSTEM					
VENDOR				PART NO.		7116-6317-02, ETC.					
VENDOR NO.				DWG NO.		7116-6317-02-R					
				DWG DATE		05-09-2011		DRAWN		ADRIANA ZAPATA	
				UNIT		mm		DESIGN		OSTERHART	
				SCL		10/1		CHECKED		06-16-2008	
				ANGLE		3°		CHECKED		06/17/2024	
				ECCENT		0.1		APPROVED			
				DWG TYPE		R		APPROVED			
				DWG SOURCE		7116-6317-02.M		APPROVED			
				DWG DATE		05-09-2011		APPROVED			

YAZAKI CORPORATION

ISSUE MARK