

PART NO. AND CH. CODE	TREATMENT
7116-5752-02 △(7B16-5752-02)	TIN PLATING 0.8~1.5 μm
7116-5752-08 △(7B16-5752-08)	NI UNDERPLATING 1.0 μm MIN. GOLD PLATING 0.38 μm MIN. TIN PLATING 0.8~1.5 μm

注記

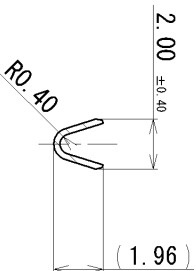
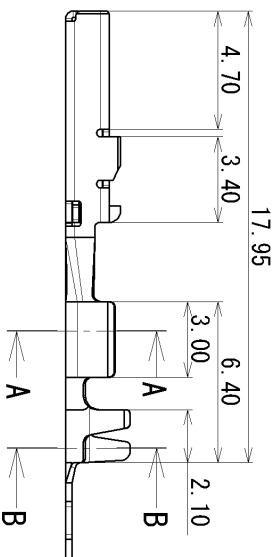
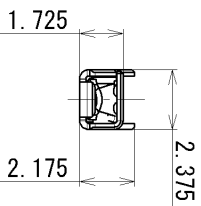
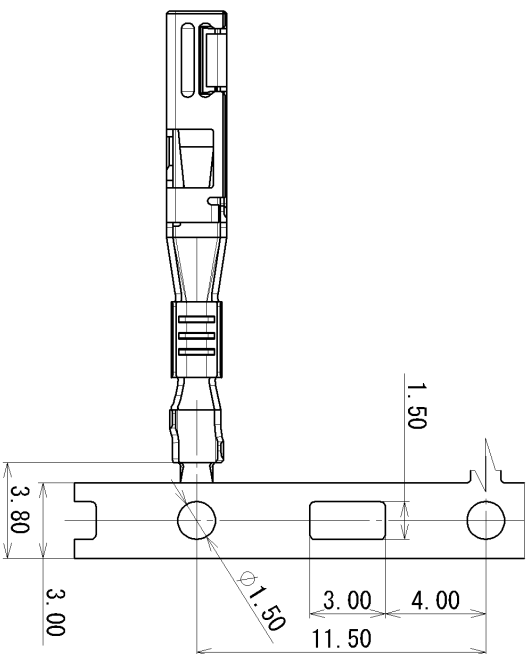
△ 1. 取扱説明書No. : YPES-15-961

△ 2. () 内品番は、エアバッジ (A/B) 回路及び  
特別管理回路に使用する時に適用すること。

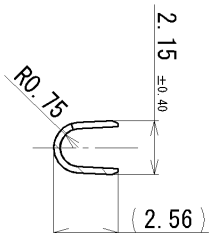
NOTES

△ 1. HANDLING MANUAL NO. : YPES-15-961

△ 2. PART NUMBERS IN PARENTHESIS SHALL BE USED FOR AIR BAG (A/B)  
CIRCUITS AND OTHER CIRCUITS DESIGNATED FOR SPECIAL MONITORING.



SEC. A-A



SEC. B-B

△ GENERAL TOLERANCE											
	10 MAX	50 MAX	100 MAX	250 MAX	250 OVR	R5 MAX	R10 MAX	R20 MAX	R20 OVR	ANGLE	ECCENT
A	±0.15	±0.2	±0.3	±0.5	±0.75					±3°	0.1
B	±0.2	±0.3	±0.55	±0.95	±1.4					±3°	0.1
◎	±0.3	±0.5	±0.8	±1.4	±2					±3°	0.15

CUSTOMER PART NO. CUSTOMER DWG NO.

OFFICE TRIAL PART NO.

VENDOR

VENDOR NO.

DWG TYPE

APPROVED

DWG SOURCE

CHECKED

DWG DATE

CHECKED

UNIT

DESIGN

SCL

ANGLE

PART NO.

CH. CODE

NAME

DWG NO.

TREAT.

SEE TABLE

SET DWG NO.

ISSUE MARK

1.5 TERMINAL FEMALE (SS SIZE)

7116-5752-02 ETC.

7116-5752-02:R

YAZAKI CORPORATION

MATL. COPPER ALLOY (△ t=0.25)

GENERAL TOLERANCE

DATE

REVISION RECORD

ADDED A/B PART NO., ETC.

NEW

2012/03/27

007-2783

J.B

2007/09/19

CHKD

2012/03/27

2012/03/27

2012/03/27

2012/03/27

2012/03/27

2012/03/27

2012/03/27

2012/03/27

2012/03/27

2012/03/27

2012/03/27

2012/03/27

2012/03/27

2012/03/27

2012/03/27

2012/03/27

2012/03/27

2012/03/27

2012/03/27

2012/03/27

2012/03/27

2012/03/27

2012/03/27

2012/03/27

2012/03/27

2012/03/27

2012/03/27

2012/03/27

2012/03/27

2012/03/27

2012/03/27

2012/03/27

2012/03/27

2012/03/27

2012/03/27

2012/03/27

2012/03/27

2012/03/27

2012/03/27

2012/03/27

2012/03/27

2012/03/27

2012/03/27

2012/03/27

2012/03/27

2012/03/27

2012/03/27

2012/03/27

2012/03/27

2012/03/27

2012/03/27

2012/03/27

2012/03/27

2012/03/27

2012/03/27

2012/03/27

2012/03/27

2012/03/27

2012/03/27

2012/03/27

2012/03/27

2012/03/27

2012/03/27

2012/03/27

2012/03/27

2012/03/27

2012/03/27

2012/03/27

2012/03/27

2012/03/27

2012/03/27

2012/03/27

2012/03/27

2012/03/27

2012/03/27

2012/03/27

2012/03/27

2012/03/27

2012/03/27

2012/03/27

2012/03/27

2012/03/27

2012/03/27

2012/03/27

2012/03/27

2012/03/27

2012/03/27

2012/03/27

2012/03/27

2012/03/27

2012/03/27

2012/03/27

2012/03/27

2012/03/27

2012/03/27

2012/03/27

2012/03/27

2012/03/27

2012/03/27

2012/03/27

2012/03/27

2012/03/27

2012/03/27

2012/03/27

2012/03/27

2012/03/27

2012/03/27

2012/03/27

2012/03/27

2012/03/27

2012/03/27

2012/03/27

2012/03/27

2012/03/27

2012/03/27

2012/03/27

2012/03/27

2012/03/27

2012/03/27

2012/03/27

2012/03/27

2012/03/27

2012/03/27

2012/03/27

2012/03/27

2012/03/27

2012/03/27

2012/03/27

2012/03/27

2012/03/27

2012/03/27

2012/03/27

2012/03/27

2012/03/27

2012/03/27

2012/03/27

2012/03/27

2012/03/27

2012/03/27

2012/03/27

2012/03/27

2012/03/27

2012/03/27

2012/03/27

2012/03/27

2012/03/27

2012/03/27

2012/03/27

2012/03/27

2012/03/27

2012/03/27

2012/03/27

2012/03/27

2012/03/27

2012/03/27

2012/03/27

2012/03/27

2012/03/27

2012/03/27

2012/03/27

2012/03/27

2012/03/27

2012/03/27

2012/03/27

2012/03/27

2012/03/27

2012/03/27

2012/03/27

2012/03/27

2012/03/27

2012/03/27

2012/03/27

2012/03/27

2012/03/27

2012/03/27

2012/03/27

2012/03/27

2012/03/27

2012/03/27

2012/03/27

2012/03/27

2012/03/27

2012/03/27

2012/03/27

2012/03/27

2012/03/27

2012/03/27

2012/03/27

2012/03/27

2012/03/27

2012/03/27

2012/03/27

2012/03/27

2012/03/27

2012/03/27

2012/03/27

2012/03/27

2012/03/27

2012/03/27

2012/03/27

2012/03/27

2012/03/27

2012/03/27

2012/03/27

2012/03/27

2012/03/27

2012/03/27