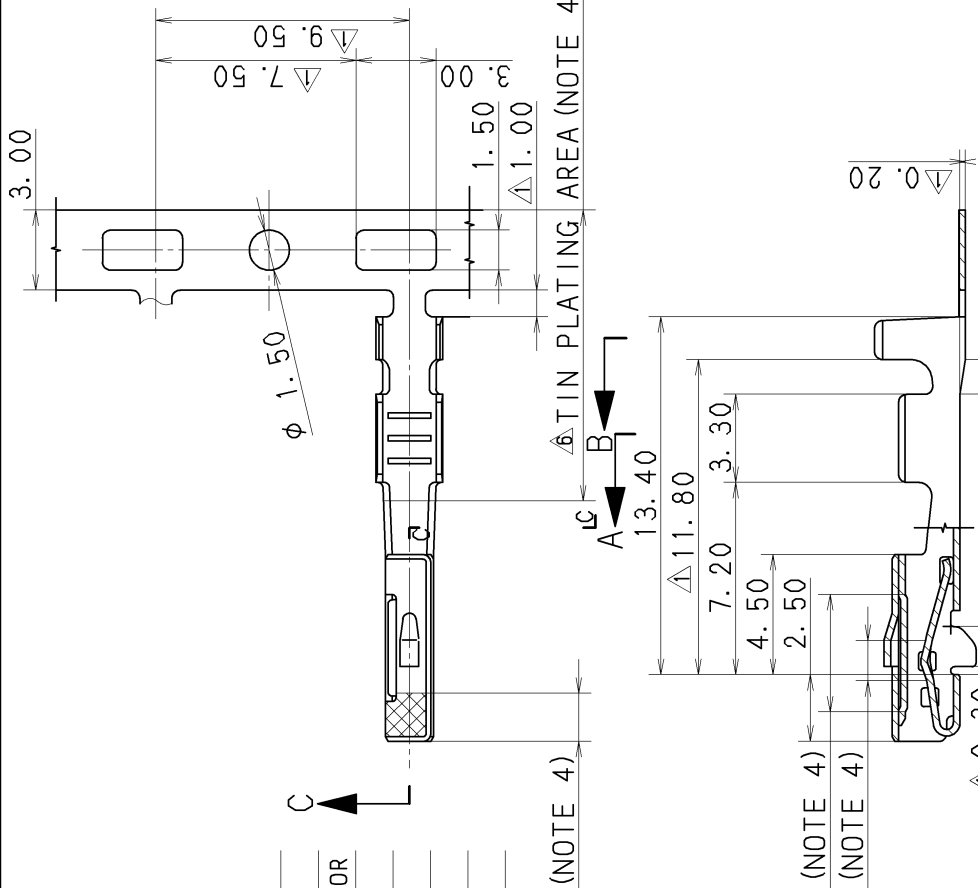


PART NO. AND CH. CODE	TREATMENT
7116-4231-08, Δ (7B16-4231-08, Δ)	Δ GOLD PLATING Δ TIN PLATING
7116-4231-02, Δ (7B16-4231-02)	TIN PLATING



- 注記
1. 嵌合相手品番 : 7114-4231-02, 7114-4231-08
 2. 適用電線サイズ : CAVUS 0.3~CAVS 0.5
 3. () 内品番は、エアバッグ (A/B) 回路及び特別管理回路に使用するとき適用すること。
 4. 金めっき端子7116-4231-08 (7B16-4231-08) に適用する。

- NOTES
1. MATING PART NO. : 7114-4231-02, 7114-4231-08
 2. APPLICABLE WIRE SIZE : CAVUS 0.3~CAVS 0.5
 3. PART NUMBERS IN PARENTHESIS SHALL BE USED FOR AIR BAG (A/B) CIRCUITS AND OTHER CIRCUITS DESIGNATED FOR SPECIAL MONITORING.
 4. APPLIES TO GOLD-PLATED TERMINAL 7116-4231-08 (7B16-4231-08).

- Δ GOLD PLATING AREA (NOTE 4)
- Δ GOLD FLASH PLATING AREA (NOTE 4)
- Δ GOLD PLATING AREA (NOTE 4)
- Δ GOLD PLATING AREA (NOTE 4)

LET	DATE	REVISION RECORD NO.	CHKD	NO.	CHANGED FORM, PLATING & DIMENSION	REVISION RECORD NO.	CHKD	NO.
Δ	09/01/16	ADDED NOTE ETC.			C09-Z028			T. O
Δ	05/11/15	CHANGED PART NAME			C05-ZF35			T. O
Δ	03/07/25	ADDED A/B PART NO.			C03-X494			Y. I
Δ	01/10/24	CHANGED TREATMENT & PART NAME, Δ			C01-X908			E. F
Δ	98/11/12	ADDED NOTE & A/B PART NO.			C98-M817			T. H
Δ	98/07/18	CHANGED FORM, PLATING & DIMENSION			C97-N442			H. K
Δ	97/03/31	NEW			C97-L553			H. K

GENERAL TOLERANCE			
10MAX	50MAX	100MAX	2500VR
A ± 0.15	± 0.2	± 0.3	± 0.75
B ± 0.2	± 0.3	± 0.55	± 1.4
(C) ± 0.3	± 0.5	± 0.8	± 1.4

DWG TYPE	DWG SOURCE	DWG DATE	UNIT	SCL	ANGLE
R	NEW	97/03/31	mm	5:1	3

APPROVED	CHECKED	DESIGN	DRAWN
M. YAMANASHI	T. MIWA	T. OSADA	E. FUKUDA

09/01/16	09/01/16	09/01/16	96/04/23	09/01/16
MASS				g

CUSTOMER	CUSTOMER PART NO.	CUSTOMER DWG NO.	CUSTOMER	COPPER ALLOY	TREAT. & FIN.
OFFICE	TRIAL PART NO.		MATL. SPEC.	COPPER ALLOY (t=0.25)	
VENDOR			NAME	Δ 1.0 III TERMINAL FEMALE	ISSUE MARK
VENDOR NO.			PART NO. CH. CODE	Δ 7116-4231-08 ETC. (7B16-4231-08 ETC.)	
DWG TYPE	DWG SOURCE	DWG DATE	DWG NO.	7116-4231-08 : R	SET DWG NO.
R	NEW	97/03/31			
APPROVED	CHECKED	CHECKED			
M. YAMANASHI	T. MIWA	T. OSADA	E. FUKUDA	R. BUCE	
09/01/16	09/01/16	09/01/16	96/04/23	09/01/16	