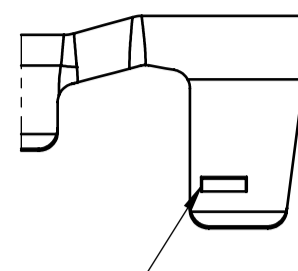
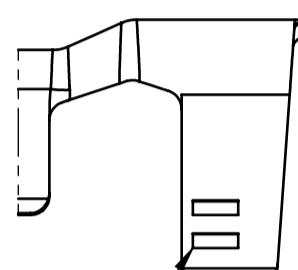
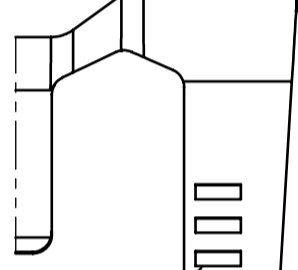
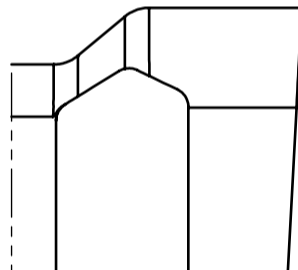
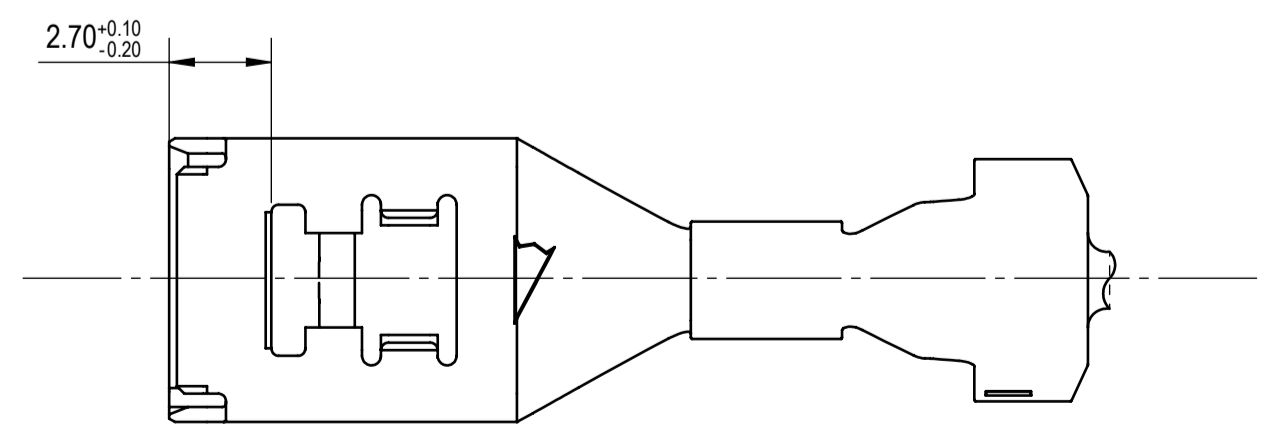
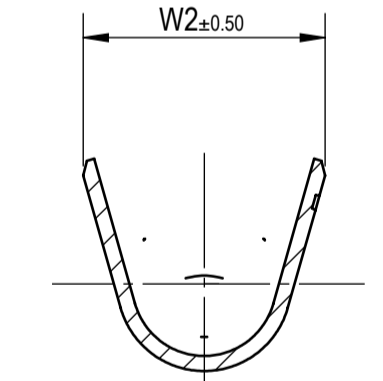
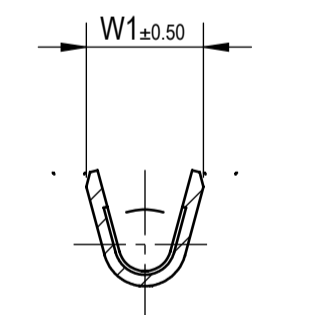
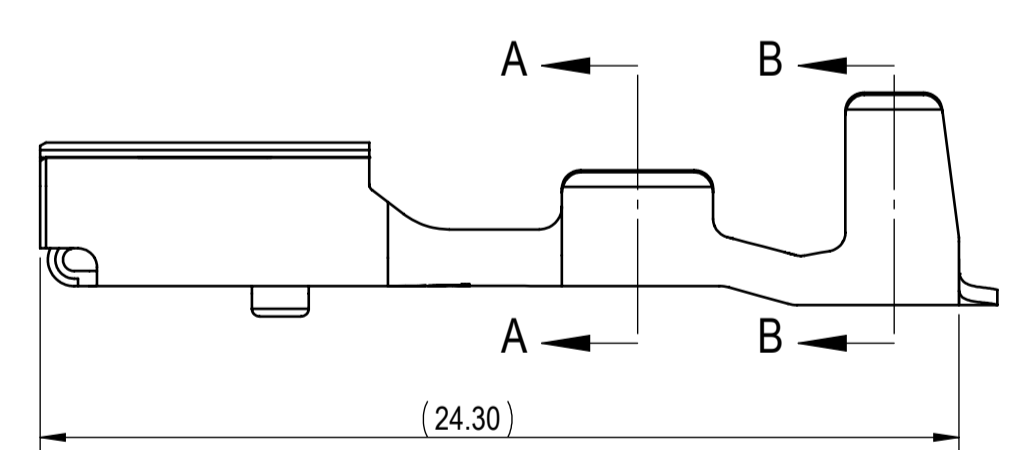
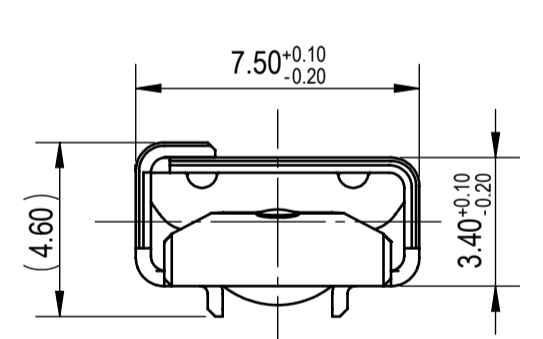
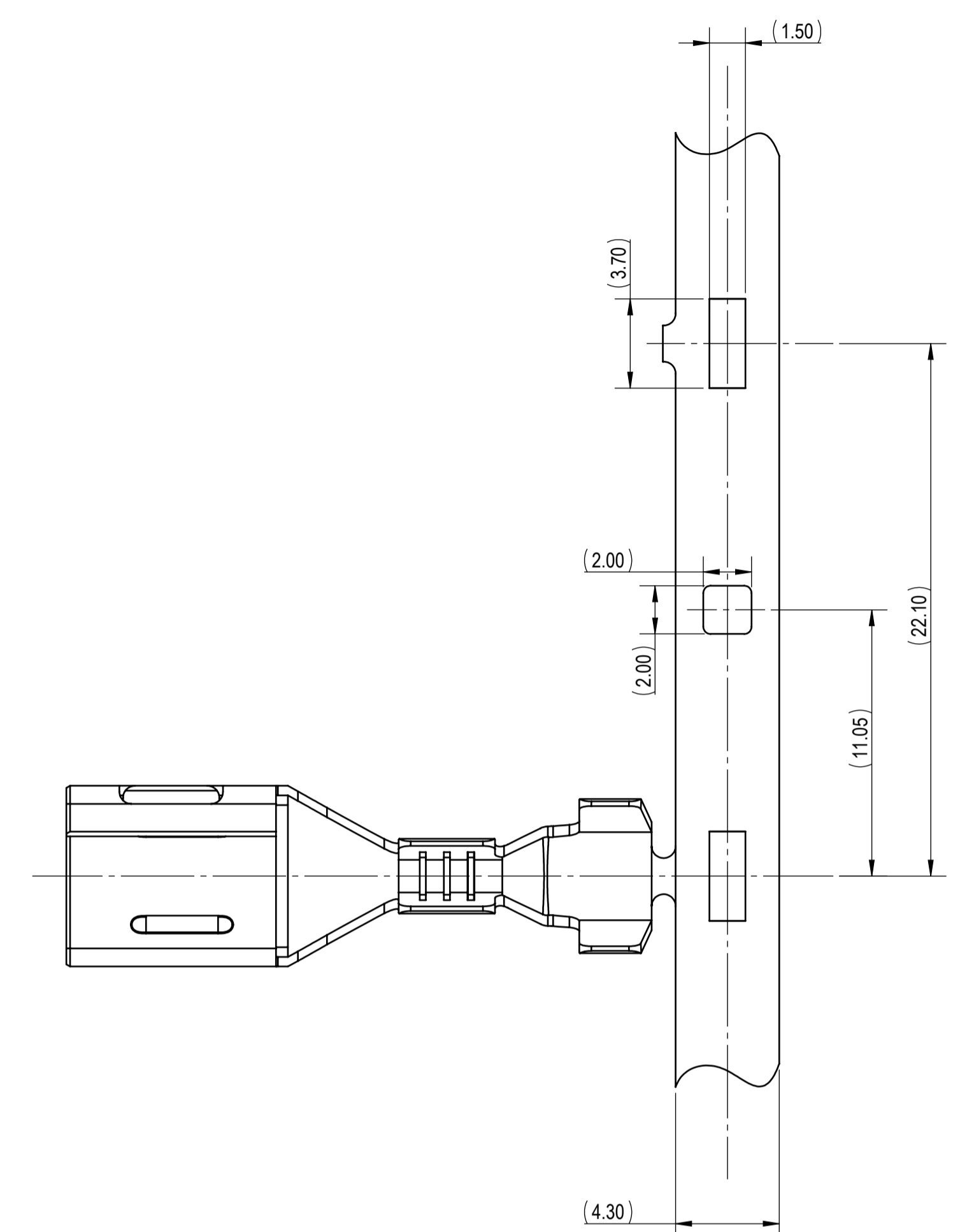
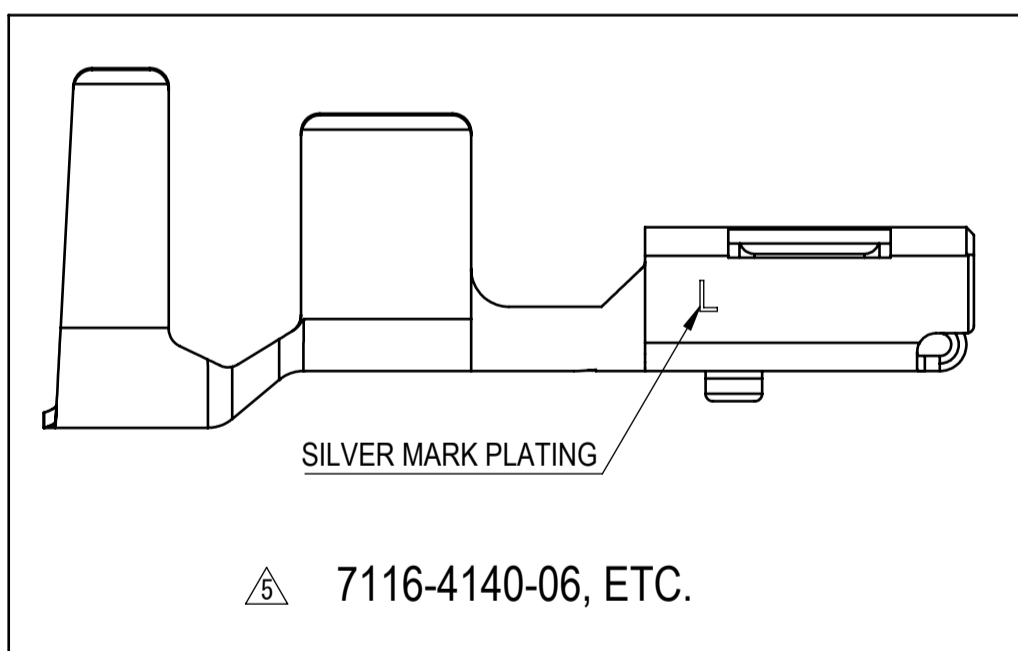
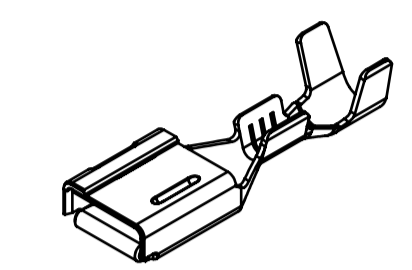


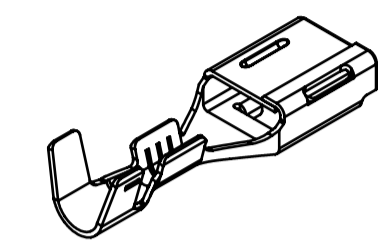
APPLICABLE WIRE GRIP SIZE IDENTIFICATION	
	(5/1) 7116-4140-02, ETC.
	(5/1) 7116-4141-02, ETC.
	(5/1) 7116-4142-02, ETC.
	(5/1) 7116-4143-02, ETC.



PART NUMBER	PLATING	PLATING MARK	APPLICABLE WIRE SIZE (SINGLE CRIMP)		GRIP DIMENSIONS		MASS (g)
			ISO (mm ²)	INSULATION O.D. (mm)	W1	W2	
7116-4140-02	Sn	-	0.5 - 1.0	1.40 - 2.10	3.10	6.40	(0.95)
7116-4141-02	Sn	-	1.5 - 2.5	2.20 - 3.00	4.00	7.30	(1.46)
7116-4142-02	Sn	-	3.0 - 4.0	3.10 - 3.70	5.00	8.30	(1.50)
7116-4143-02	Sn	-	5.0 - 6.0	3.90 - 4.30	5.60	9.10	(1.68)
7116-4140-06 (NOT AVAILABLE)	Ag	L	0.5 - 1.0	1.40 - 2.10	3.10	6.40	(0.95)
7116-4141-06	Ag	L	1.5 - 2.5	2.20 - 3.00	4.00	7.30	(1.46)
7116-7142-06	Ag	L	2.5 - 4.0	2.70 - 3.70	5.00	8.30	(1.50)
7116-4143-06	Ag	L	5.0 - 6.0	3.90 - 4.30	5.60	9.10	(1.68)
7196-2512-06	Ag	L	5.0 - 6.0	3.90 - 4.30	5.60	9.10	(1.68)



FRONT ISOMETRIC VIEW (2/1)



REAR ISOMETRIC VIEW (2/1)

- NOTES:
- PARTS MUST BE PURCHASED FROM YAZAKI.
 - PARTS MUST BE FREE OF BURRS AND SHARP EDGES THAT MAY BE DETRIMENTAL TO SATISFACTORY ASSEMBLY. SAFE HANDLING OR FUNCTION OF THE PART.
 - MATERIAL: COOPER ALLOY.
 - PLATING: SEE TABLE.
 - MATING PART NUMBER: SEE 7114-4140-02:R DRAWING.
 - APPLICABLE WIRE SEAL: SEE 7158-3081-50:R AND 7158-3084-40:R DRAWINGS.
 - PART TO COMPLY WITH YPES-31-038 REQUIREMENTS.
 - THIS DRAWING IS TO BE USED FOR INTERNAL YAZAKI PSW SUBMISSION.
 - HANDLING MANUAL NUMBER: YPES-15-644 AND YPES-15-970.

08-21-2023	REDRAWN TO THE LATEST STANDARDS. UPDATED WIRE SIZE RANGE. UPDATED NOTES AND ADDED SILVER CONFIGURATIONS.	C23-A620	I.B
08-01-1996	NEW	C96-M174	H.K
LET	DATE	REVISION RECORD	NO. CHKD

GENERAL TOLERANCE											
A	±0.15	±0.20	±0.30	±0.50	±0.75	±0.20	±0.30	±0.50	±2.50	±3°	0.1
B	±0.20	±0.30	±0.55	±0.95	±1.40	±0.20	±0.30	±0.50	±2.50	±3°	0.1
C	±0.30	±0.50	±0.80	±1.40	±2.00	±0.20	±0.30	±0.50	±2.50	±3°	0.15

MASS SEE TABLE

CUSTOMER N/A	CUSTOMER PART NO.	CUSTOMER DWG NO.	MATL SPEC.	SEE NOTES	TREAT. & FIN.	SEE NOTES
OFFICE	YNA	TRIAL PART NO.	NAME 6.3 SYSTEM SEALED FEMALE TERMINAL			
VENDOR						
VENDOR NO.						
DWG TYPE	R	DWG SOURCE	7116-4140-02:M	DWG DATE	08-01-1996	UNIT mm
APPROVED	CHECKED	CHECKED	DESIGN	DRAWN	IWAHORI	ISABEL BACA
			03-20-1996	08-21-2023		
			YAZAKI CORPORATION			

ISSUE MARK