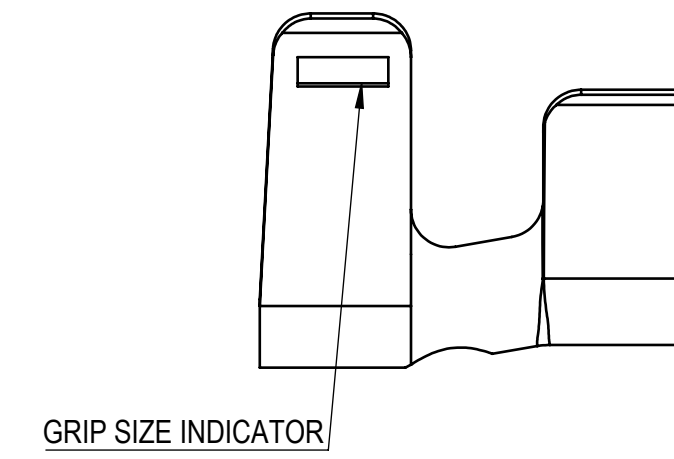


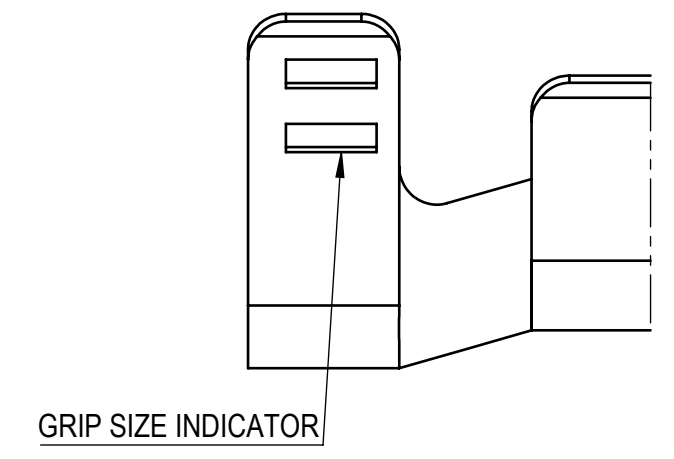
APPLICABLE WIRE GRIP SIZE IDENTIFICATION

(5/1)



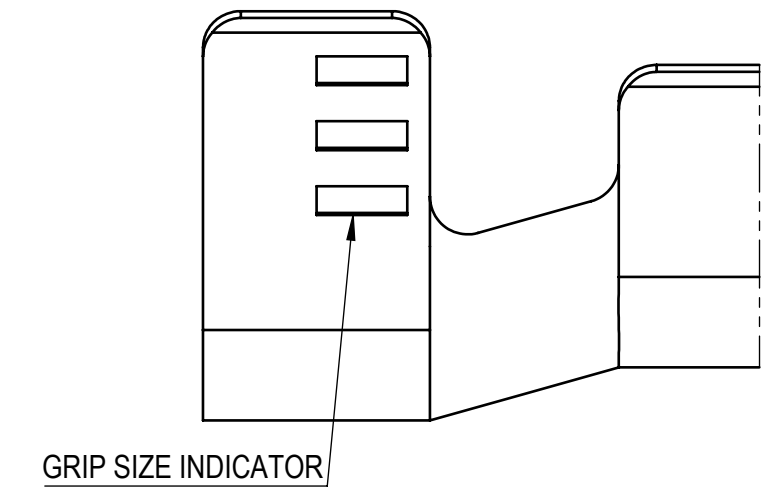
7116-4120-02, ETC.

(5/1)



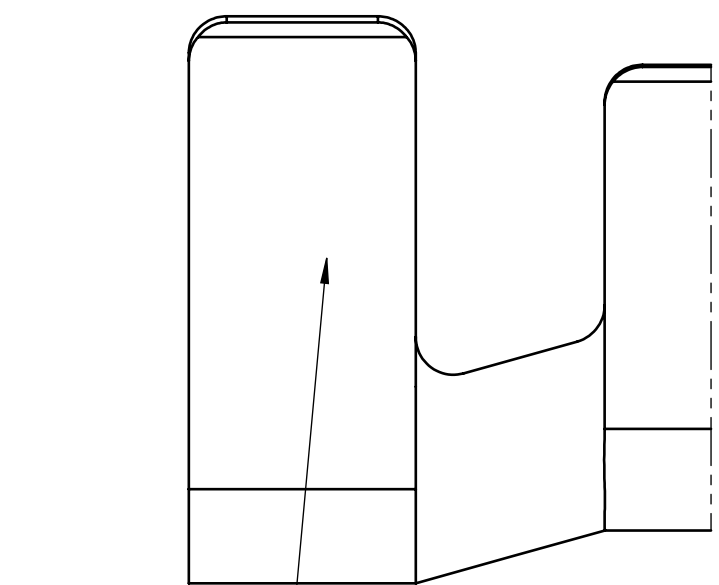
7116-4121-02, ETC.

(5/1)

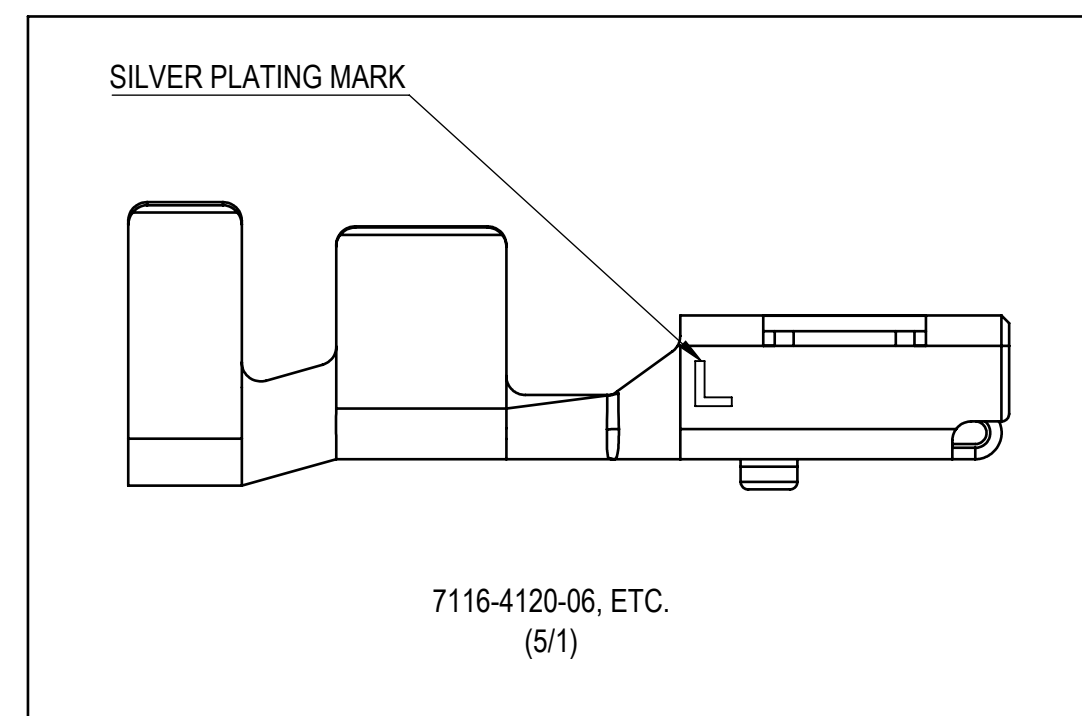


7116-4122-02, ETC.

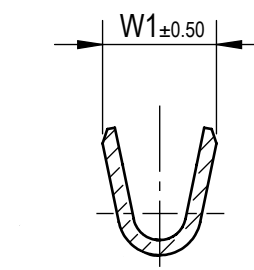
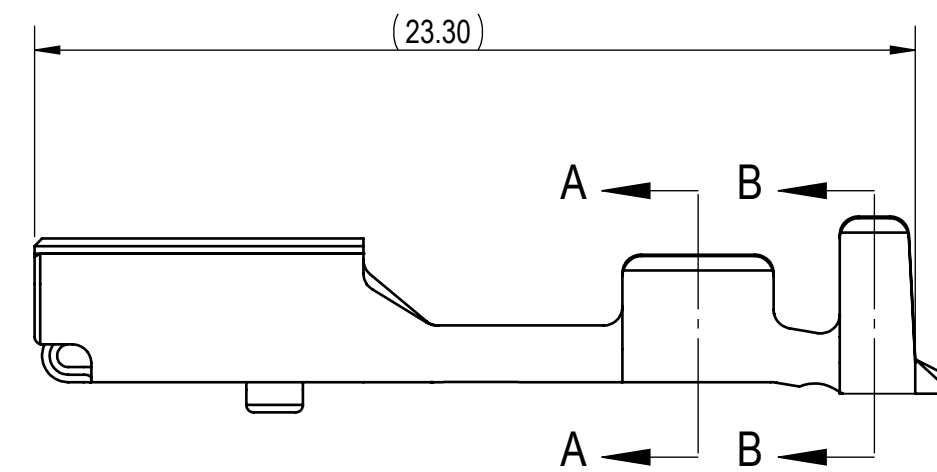
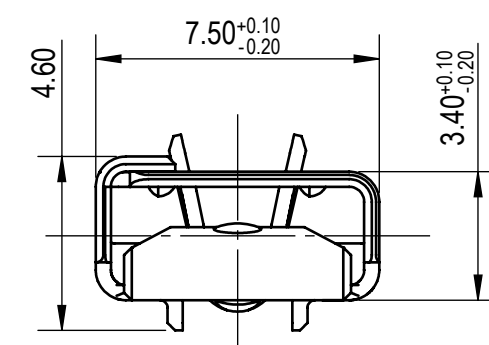
(5/1)



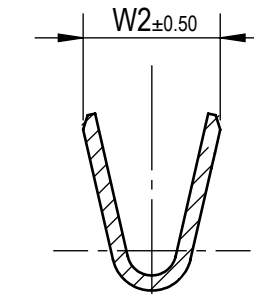
7116-4124-02, ETC.



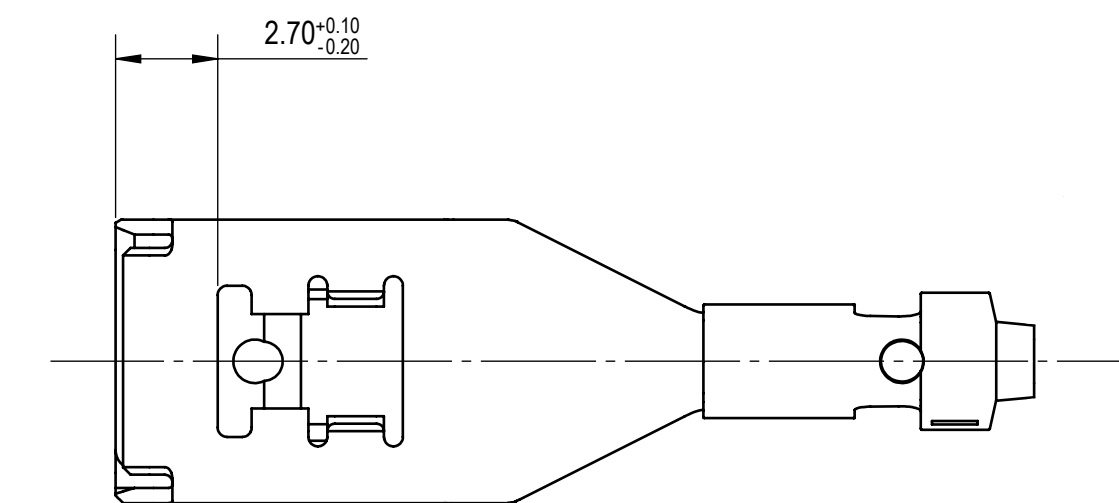
7116-4120-06, ETC.  
(5/1)



SECTION A-A

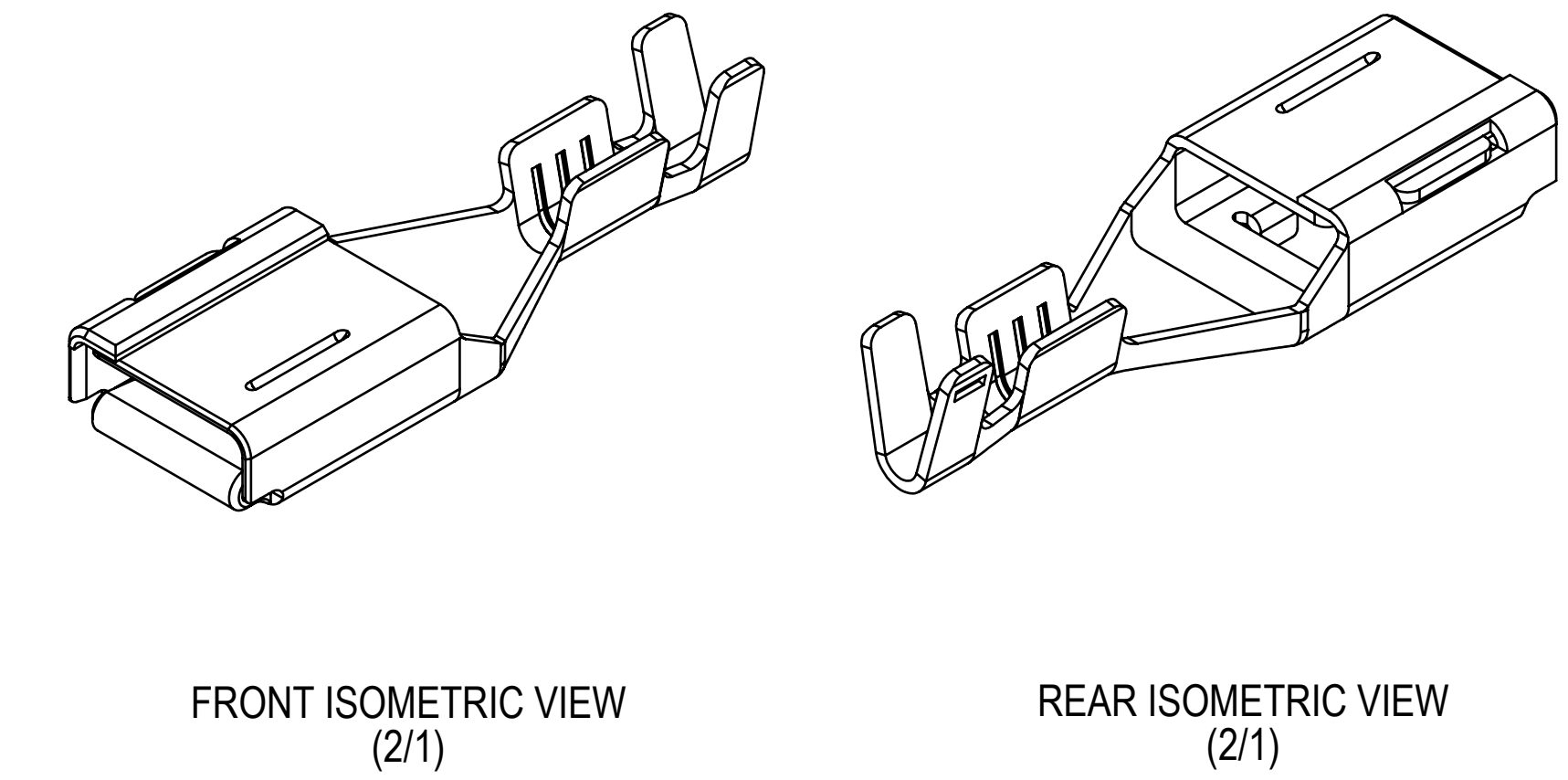


SECTION B-B



NOTES:

- PARTS MUST BE PURCHASED FROM YAZAKI.
- PARTS MUST BE FREE OF BURRS AND SHARP EDGES THAT MAY BE DETRIMENTAL TO SATISFACTORY ASSEMBLY, SAFE HANDLING OR FUNCTION OF THE PART.
- MATERIAL: COPPER ALLOY.
- PLATING: SEE TABLE.
- MATING PART NUMBER: SEE 7114-4120-02R DRAWING.
- PART TO COMPLY WITH YPES-31-038 REQUIREMENTS.
- THIS DRAWING IS TO BE USED FOR INTERNAL YAZAKI PSW SUBMISSION.
- HANDLING MANUAL NUMBER: YPES-15-599E



FRONT ISOMETRIC VIEW  
(2/1)

REAR ISOMETRIC VIEW  
(2/1)

PART NUMBER	PLATING	PLATING MARK	APPLICABLE WIRE SIZE (SINGLE CRIMP)		GRIP DIMENSIONS		MASS (g)
			METRIC (mm <sup>2</sup> )	INSULATION O.D. (mm)	W1	W2	
7116-4120-02	Sn	-	0.5-1.00	(1.40-2.10)	3.10	3.70	(0.95)
7116-4121-02	Sn	-	1.00-2.5	(1.90-3.00)	4.00	4.90	(1.46)
7116-4122-02	Sn	-	3.0-4.0	(3.10-3.70)	5.00	5.70	(1.50)
7116-4124-02	Sn	-	5.0-6.0	(3.90-4.30)	5.60	6.60	(1.68)
7116-4120-06 (NOT AVAILABLE)	Ag	L	0.5-1.00	(1.40-2.10)	3.10	3.70	(0.95)
7116-4121-06 (NOT AVAILABLE)	Ag	L	1.00-2.5	(1.90-3.00)	4.00	4.90	(1.46)
7116-4122-06	Ag	L	3.0-4.0	(3.10-3.70)	5.00	5.70	(1.50)
7116-4124-06	Ag	L	5.0-6.0	(3.90-4.30)	5.60	6.60	(1.68)
7196-2560-06	Ag	L	5.0-6.0	(3.90-4.30)	5.60	6.60	(1.68)

LET	DATE	REVISION RECORD	NO.	CHKD
△	08-17-2023	REDRAWN TO LATEST STANDARD ALSO SILVER PLATING WAS ADDED.	C23-A609	AC
△	08-28-1995	NEW	C95-M160	I.I

GENERAL TOLERANCE											
	10MAX	50MAX	100MAX	250MAX	250OVR	R5-MAX	R10-MAX	R20-MAX	R20-OVR	ANGLE	ECCENT
A	±0.15	±0.20	±0.30	±0.50	±0.75					±3°	0.1
B	±0.20	±0.30	±0.55	±0.95	±1.40	±0.20	±0.30	±0.50	±2.50	±3°	0.15
Ⓒ	±0.30	±0.50	±0.80	±1.40	±2.00					±3°	0.15
SPECIFIED MASS (SEE TABLE)											

CUSTOMER N/A	CUSTOMER PART NO.	CUSTOMER DWG NO.	MATL SPEC.	SEE NOTES	TREAT. & FIN.	SEE NOTES
OFFICE	YNA	TRIAL PART NO.	NAME 6.3mm SYSTEM UNSEALED			
VENDOR			FEMALE TERMINAL			
VENDOR NO.			PART NO.	7116-4120-02, ETC		
DWG TYPE	R	DWG SOURCE	DWG DATE	UNIT	SCL	ANGLE
APPROVED	CHECKED	CHECKED	DESIGN	DRAWN	PART NO. 7116-4120-02:R	
						SET DWG NO. (1/1)
						YAZAKI CORPORATION