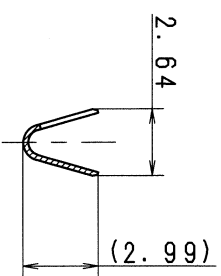
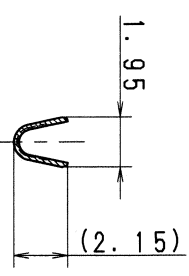
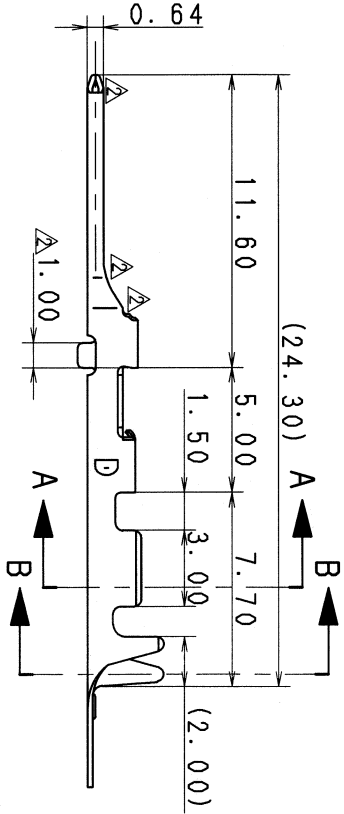
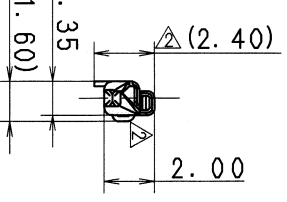
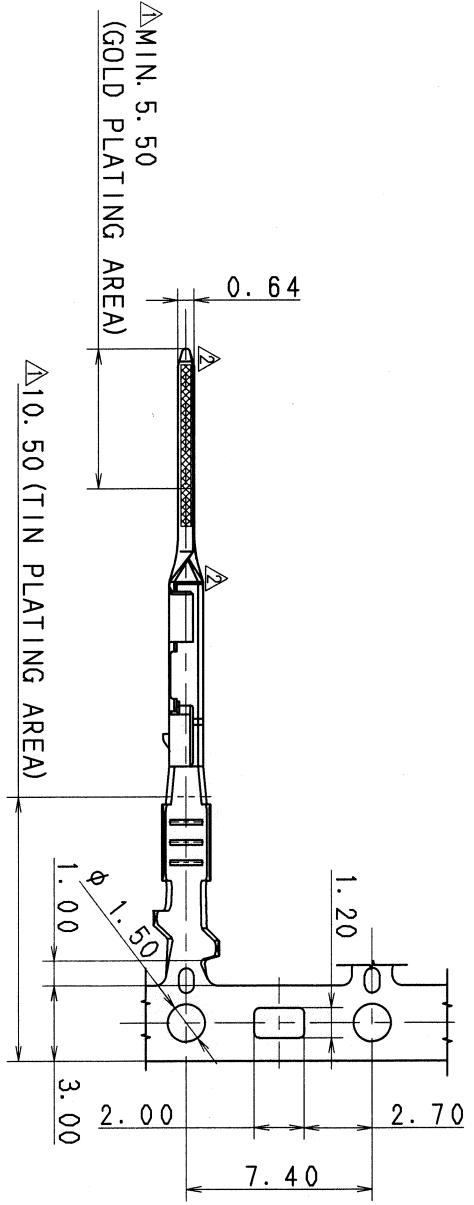


GENERAL TOLERANCE											
	10MAX	50MAX	100MAX	250MAX	500VR	R5 MAX	R10 MAX	R20 MAX	R20 OVR	ANGLE	ECCENT
A	±0.15	±0.2	±0.3	±0.5	±0.75	±0.2	±0.3	±0.5	±2.5	±3°	0.1
B	±0.2	±0.3	±0.55	±0.95	±1.4	±0.2	±0.3	±0.5	±2.5	±3°	0.1
C	±0.3	±0.5	±0.8	±1.4	±2	±0.2	±0.3	±0.5	±2.5	±3°	0.15

PART NO.	TREATMENT
AND CH. CODE	TIN PLATING
7114-4764-02	TIN PLATING
7114-4764-08	GOLD PLATING

注記  
 1. 嵌合相手品番: 7116-4660-02  
 2. 適用電線サイズ: CAVS 0.3~CAVS 0.5

NOTES  
 1. MATING PART NO.: 7116-4660-02  
 2. APPLICABLE WIRE SIZE: CAVS 0.3~CAVS 0.5



REV	DATE	REVISION RECORD	NO.	CHKD	VENDOR	VENDOR NO.
Δ	05/12/27	CHANGED CODE ETC.	C06-Z008	Y. K	CUSTOMER	
Δ	02/04/04	ADDED PART NO. & ADDED PLATING AREA	C02-X349	S. K	CUSTOMER PART NO.	
	01/04/13	NEW	C01-P362	N. S	OFFICE	
LET	DATE	REVISION RECORD	NO.	CHKD	VENDOR	VENDOR NO.
GENERAL TOLERANCE						
A	±0.15	±0.2	±0.3	±0.5	±0.75	±30'
B	±0.2	±0.3	±0.55	±0.95	±1.4	±30'
C	±0.3	±0.5	±0.8	±1.4	±2	±30'
SPECIFIED						

MATL. SPEC.	TREAT. & FIN.	ISSUE MARK
ABRASS (t=0.20)	SEE TABLE	
NAME	025 TERMINAL MALE	
PART NO.	7114-4764-02 ETC.	
CH. CODE	7114-4764-02:R	SET DWG NO.
DWG NO.	7114-4764-02:R	
YAZAKI CORPORATION		

1 2 3