

1

2

3

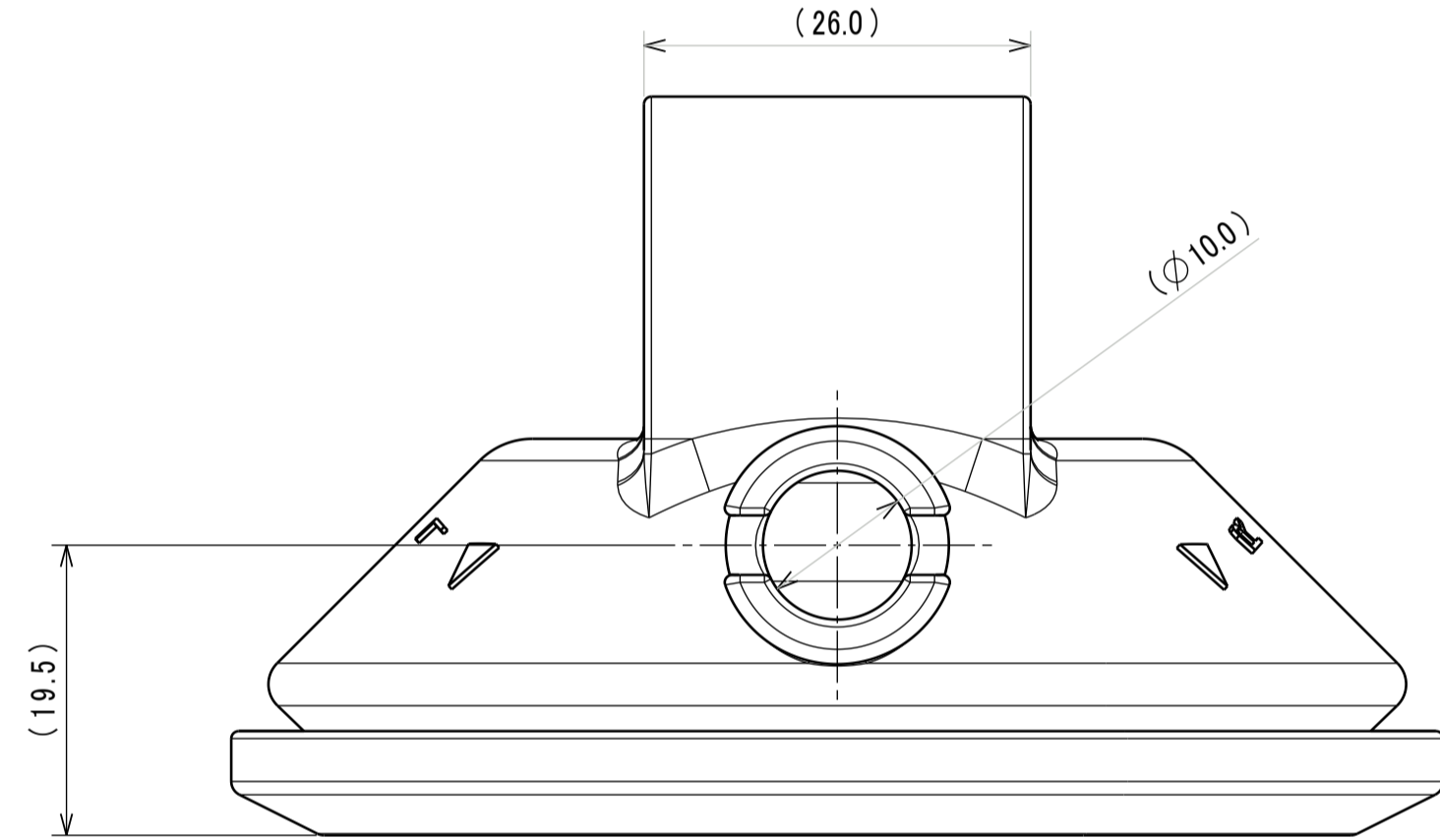
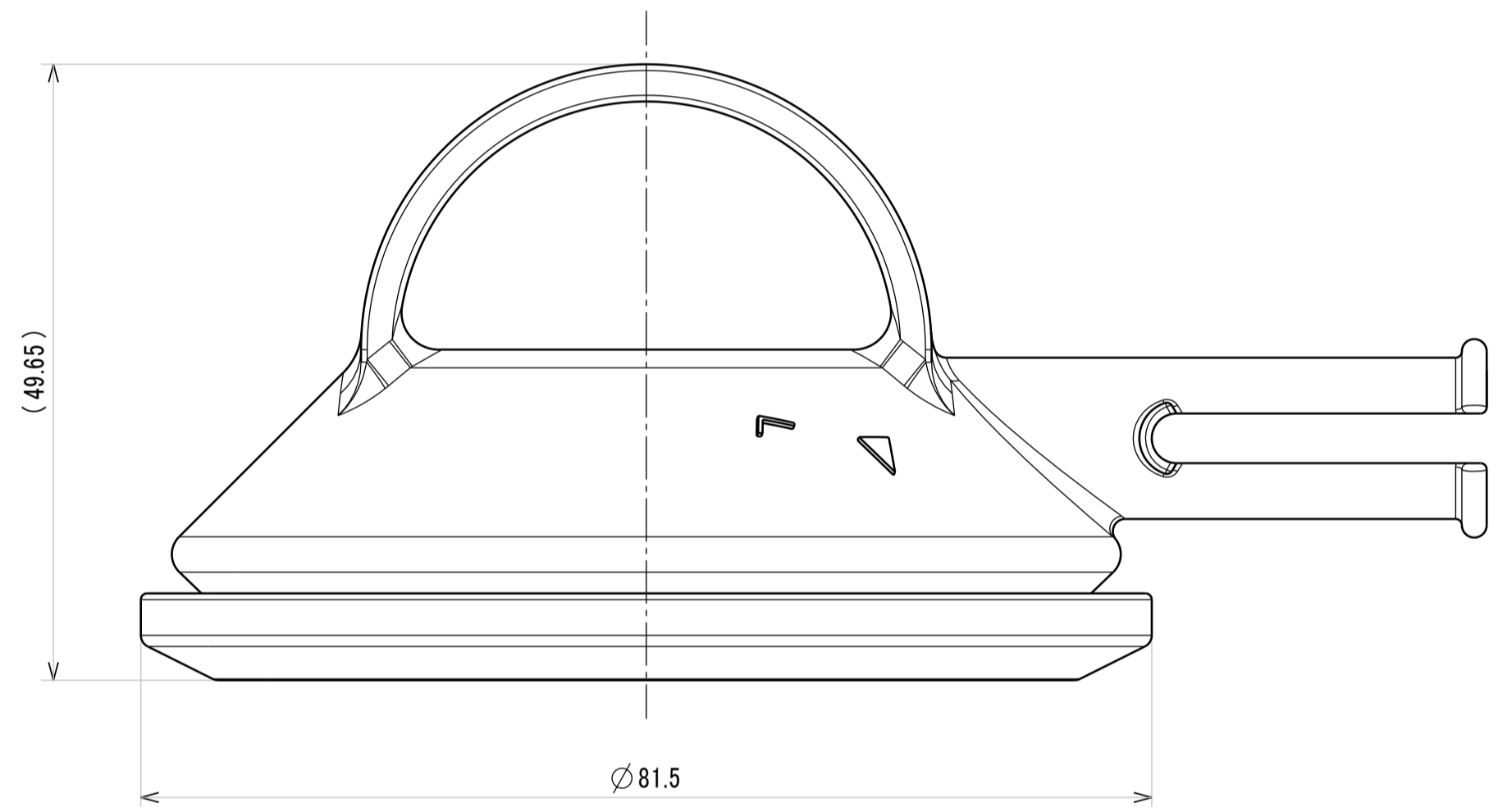
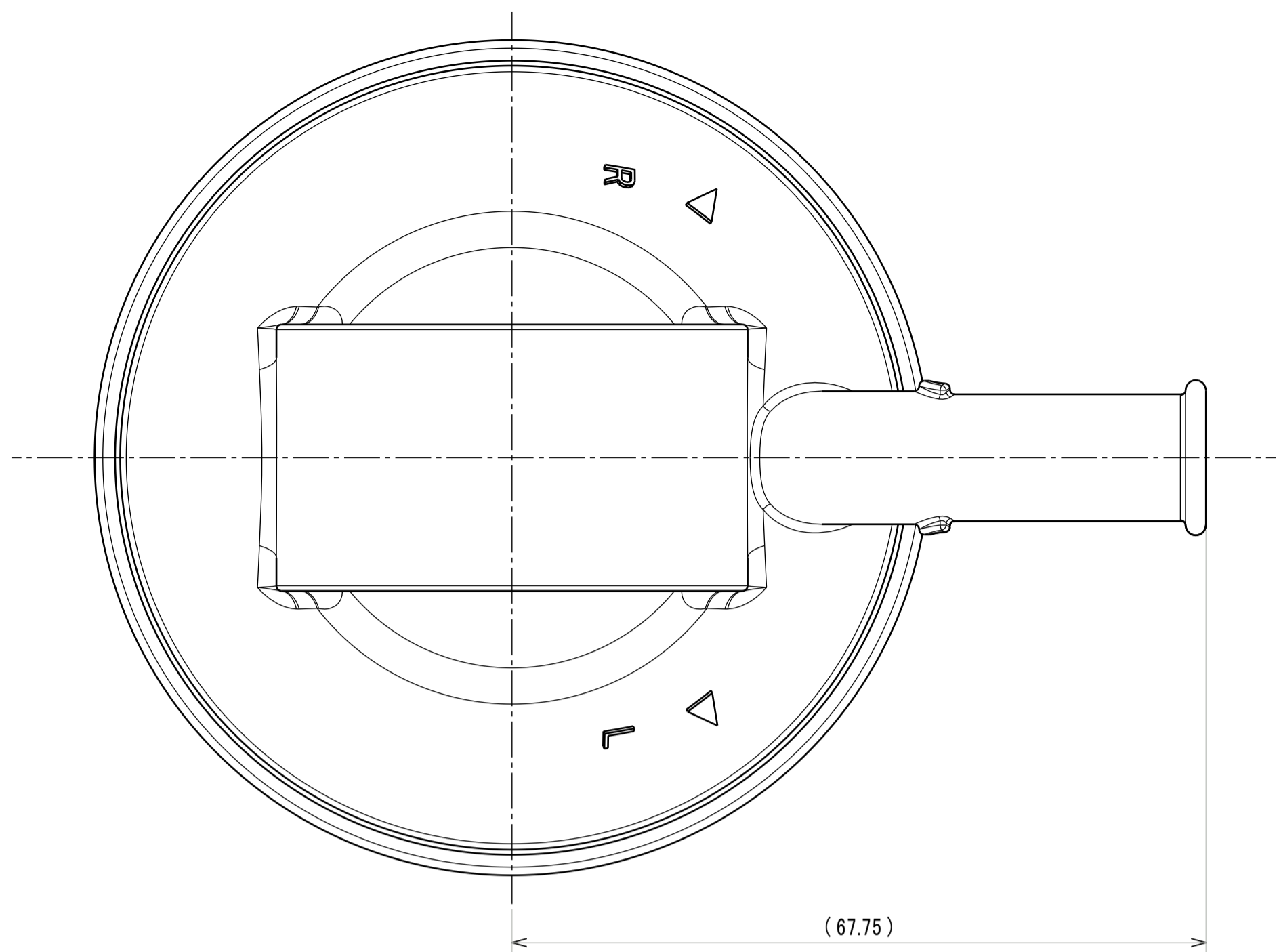
4

5

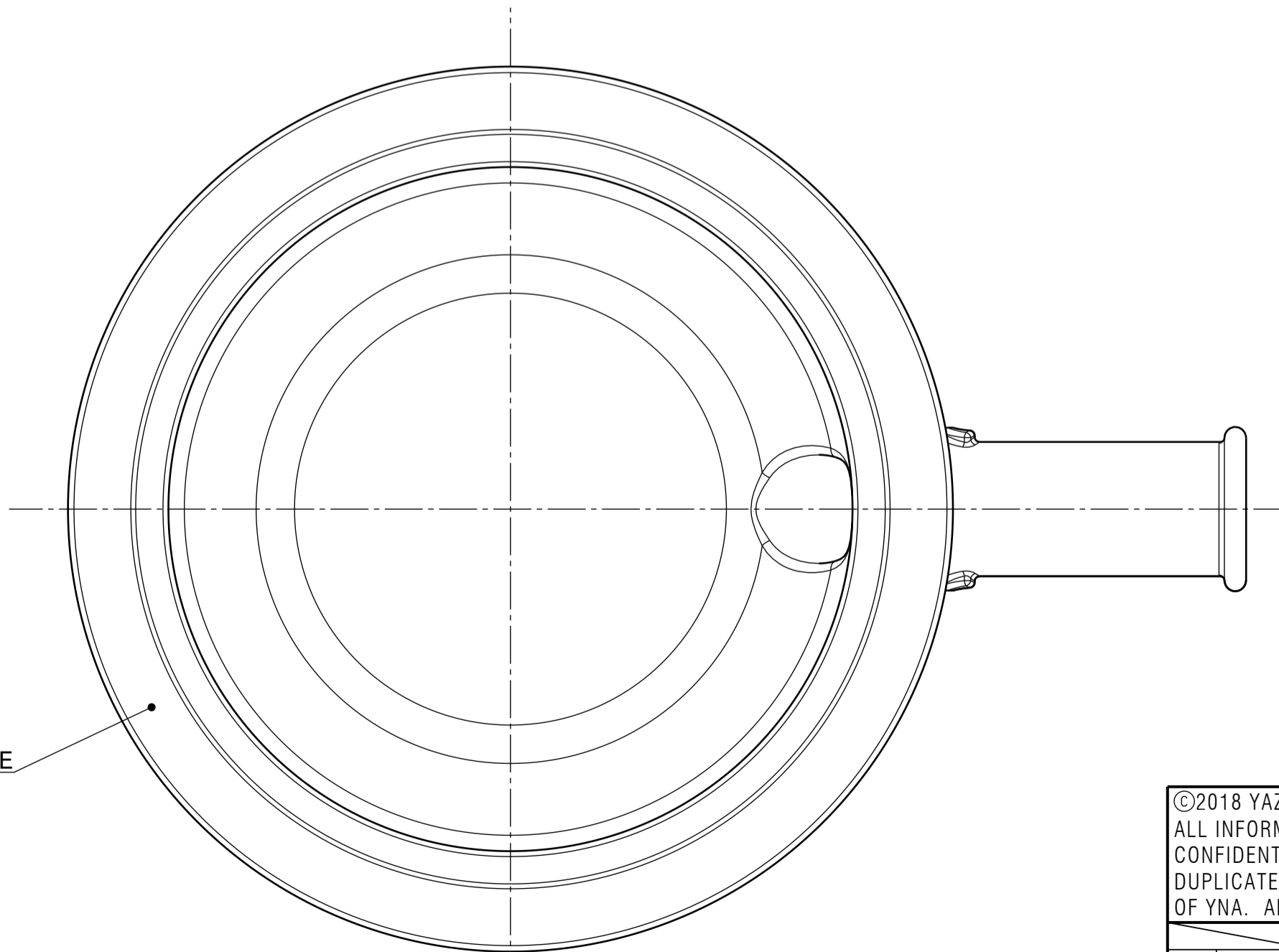
6

7

RUBBER PART GENERAL TOLERANCE			
PART DIM.	1	2	3
0 TO 3	±0.2	±0.3	±0.4
3 TO 6	±0.2	±0.4	±0.5
6 TO 10	±0.3	±0.5	±0.6
10 TO 18	±0.3	±0.6	±0.8
18 TO 30	±0.4	±0.8	±1.0
30 TO 50	±0.5	±1.0	±1.5
50 TO 80	±0.6	±1.2	±2.0
80 TO 120	±0.7	±1.4	±2.5
120 TO 180	±0.8	±1.6	±3.0
180 TO 250	±1.0	±2.0	±4.0
250 TO 315	±1.2	±2.5	±5.0
315 TO 400	±1.5	±3.0	±6.0
400 TO 500	±1.8	±3.5	±7.0
500 OVER	±0.4%	±0.8%	±1.5%



- NOTES:
- MUST BE FREE OF FLASH AND IMPERFECTION THAT AFFECT FUNCTION.
 - APPLICABLE PANEL: Ø70.0, t=0.65



PART IDENTIFICATION THIS SURFACE

ISSUE MARK

LET	DATE	REVISION RECORD	NO.	CHKD
	2020/08/25	NEW	C20-A615	R.E.

©2018 YAZAKI NORTH AMERICA, INC. ALL INFORMATION ON THIS DRAWING IS THE PROPRIETARY AND CONFIDENTIAL PROPERTY OF YNA AND SHALL NOT BE DISCLOSED, DUPLICATED OR DISTRIBUTED WITHOUT THE EXPRESS WRITTEN CONSENT OF YNA. ALL RIGHTS RESERVED.										CUSTOMER CUSTOMER PART NO. CUSTOMER DWG NO. OFFICE YNA-L				MATERIAL SPEC. EPDM (BLACK)				TREAT. & FIN. N/A																																			
GENERAL TOLERANCE										VENDOR NO.				NAME DOOR PANEL GROMMET																																							
<table border="1"> <thead> <tr> <th></th> <th>10MAX</th> <th>50MAX</th> <th>100MAX</th> <th>250MAX</th> <th>2500OVR</th> <th>ANGLE</th> <th>ECCENT</th> </tr> </thead> <tbody> <tr> <td>A</td> <td>±0.15</td> <td>±0.2</td> <td>±0.3</td> <td>±0.5</td> <td>±0.75</td> <td>±0.5°</td> <td>0.1</td> </tr> <tr> <td>B</td> <td>±0.2</td> <td>±0.3</td> <td>±0.55</td> <td>±0.95</td> <td>±1.4</td> <td>±1.0°</td> <td>0.1</td> </tr> <tr> <td>C</td> <td>±0.3</td> <td>±0.5</td> <td>±0.8</td> <td>±1.4</td> <td>±2</td> <td>±1.5°</td> <td>0.15</td> </tr> </tbody> </table>											10MAX	50MAX	100MAX	250MAX	2500OVR	ANGLE	ECCENT	A	±0.15	±0.2	±0.3	±0.5	±0.75	±0.5°	0.1	B	±0.2	±0.3	±0.55	±0.95	±1.4	±1.0°	0.1	C	±0.3	±0.5	±0.8	±1.4	±2	±1.5°	0.15	DWG TYPE R				DWG SOURCE NEW				DWG DATE 2020/08/25			
	10MAX	50MAX	100MAX	250MAX	2500OVR	ANGLE	ECCENT																																														
A	±0.15	±0.2	±0.3	±0.5	±0.75	±0.5°	0.1																																														
B	±0.2	±0.3	±0.55	±0.95	±1.4	±1.0°	0.1																																														
C	±0.3	±0.5	±0.8	±1.4	±2	±1.5°	0.15																																														
SPECIFIED SEE RUBBER PART GENERAL TOLERANCE										APPROVED				DRAWN																																							
MASS 39.8 g										DESIGN				DRAWN																																							
										NOMOTO R.				EXENBERGER																																							
										2018/11/15				2020/08/25																																							
										PART NO. 7075-1935-30				DWG NO. 7075-1935-30-R																																							
										YAZAKI CORPORATION				A1																																							

1

2

3

4

5

6

7