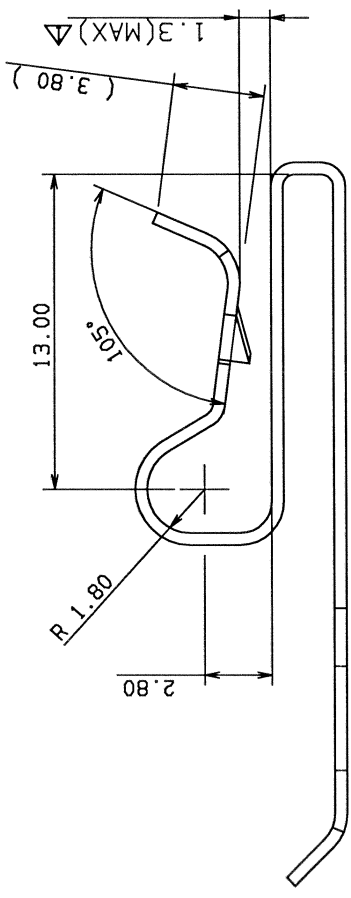
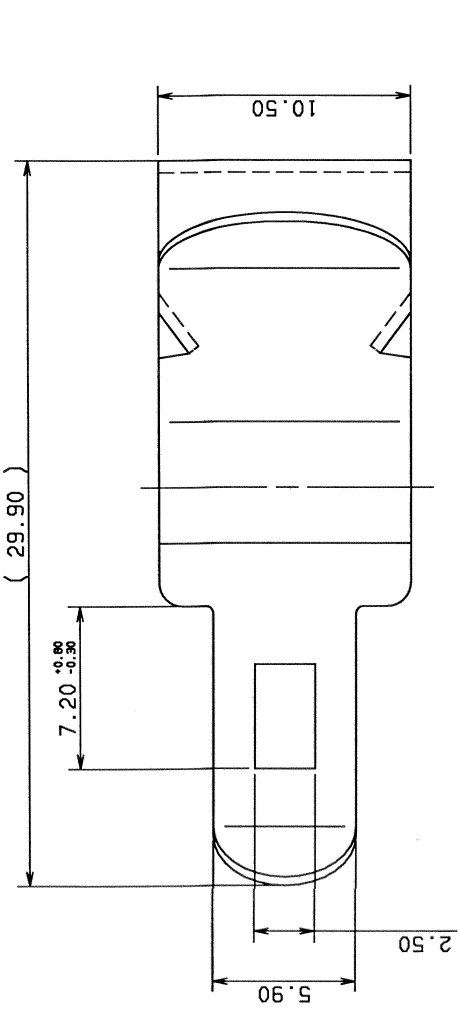


- NOTES:
- 1) GENERAL THICKNESS: 0.50
 - 2) MATERIAL: 1050 ANNEALED STEEL
 - 3) APPLICABLE PANEL THICKNESS: 0.70 - 2.00 (METAL OR PLASTIC)
 - 4) SEE DVP&R NUMBER DVPR-97-050 FOR TESTING SPECIFICATIONS
 - 5) RESTRICTED AND REPORTABLE CHEMICALS TO BE REPORTED PER GMW 3059



30.NOV.07	ADD DIMENSION	C07-E081	R.F.	CUSTOMER PART NO.	CUSTOMER DWG NO.	MATL. SEE NOTE 1 & 2	TREAT. & FIN.	ISSUE MARK
14.JUN.05	RENEW	C05-E028	R.F.	OFFICE KIDEN	TRIAL PART NO.	NAME YESC CONNECTOR CLIP		
25.JUL.03	NEW	C03-E271	J.K.	VENDOR	X30947-A317			
LET DATE	REVISION RECORD	NO.	CHKD	VENDOR NO.				
GENERAL TOLERANCE								
10MAX	50MAX	100MAX	250MAX	2500VR	ANGLE	ECCENT		
A	±0.15	±0.2	±0.3	±0.5	±0.75	±30'	0.1	
B	±0.2	±0.3	±0.55	±0.95	±1.4	±30'	0.1	
C	±0.3	±0.5	±0.8	±1.4	±2	±30'	0.15	
SPECIFIED WEIGHT 2.0 g								
APPROVED				CHECKED	DESIGN	DRAWN		
S. WEBER				J. KLEINER	R. FENTROHSR	J. FENTROHS		
30.NOV.07				30.NOV.07	14.JUN.05	30.NOV.07		
DWG TYPE				DWG SOURCE	DWG DATE	UNIT	SCL	ANGLE
R				NEW	25.JUL.03	7077	5/1	3
PART NO.				CH. CODE	PART NO. 7047-9652-0WΔ			
DWG NO.				DWG NO. 7047-9652-0W:RΔ				
SET DWG NO.				SET DWG NO.				
YAZAKI CORPORATION				YAZAKI CORPORATION				