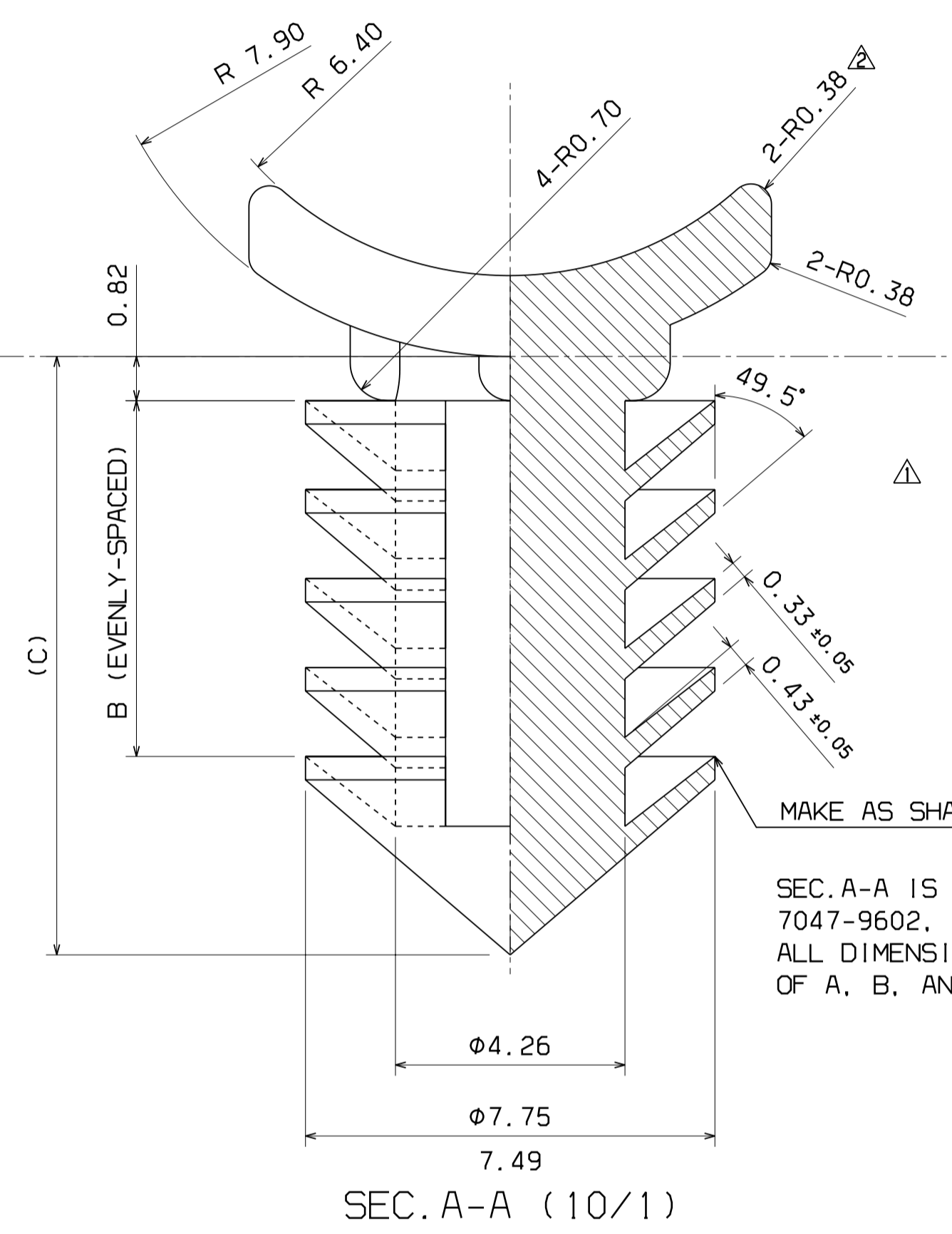
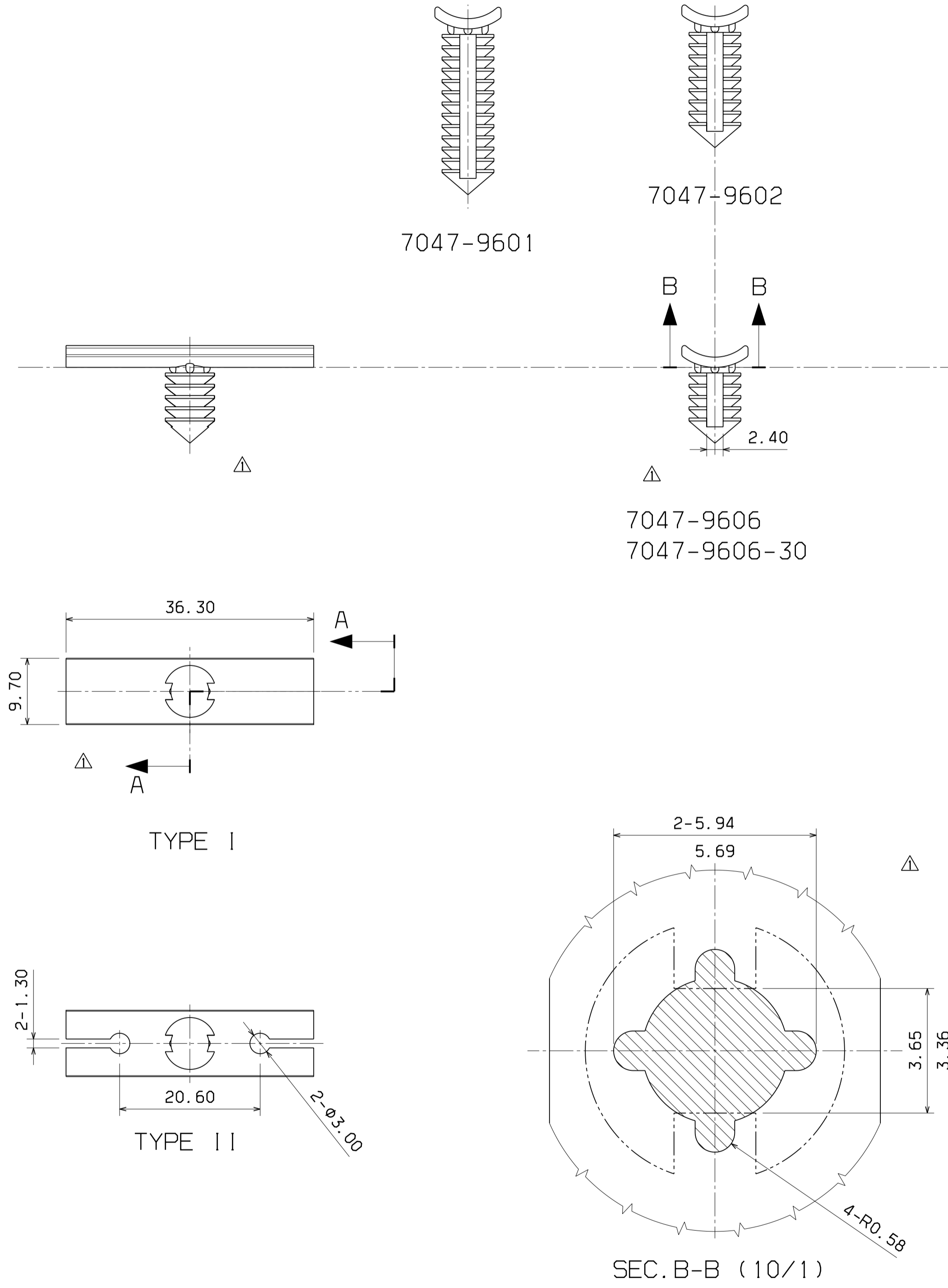


PART NUMBER	DIMENSION		NUMBER OF FINS	COLOR	TYPE
	B	C			
7047-9606	6.60	11.10	5	NATURAL	I
7047-9602	13.20	17.70	9	NATURAL	I
7047-9601	19.80	24.30	13	NATURAL	I
7047-9600	6.60	11.10	5	NATURAL	II
7047-9606-30	6.60	11.10	5	BLACK	I



SEC. A-A IS SECTION CUT OF 7047-9606
 7047-9602, 7047-9601 DIFFER IN NUMBER OF FINS
 ALL DIMENSIONS ARE THE SAME WITH THE EXCEPTION
 OF A, B, AND C (SEE TABLE)

© 2020 YAZAKI NORTH AMERICA, INC. ALL INFORMATION ON THIS DRAWING IS THE PROPRIETARY AND CONFIDENTIAL PROPERTY OF YNA AND SHALL NOT BE DISCLOSED, DUPLICATED OR DISTRIBUTED WITHOUT THE EXPRESS WRITTEN CONSENT OF YNA. ALL RIGHTS RESERVED.									
CUSTOMER		PART NUMBER		COMMENT		MATERIAL		TREATMENT	
CUSTOMER PART NO.		CUSTOMER DWG NO.		SPEC. COLOR (SEE TABLE)		NAME		RETAINER REAR LAMP WIRING	
OFFICE YNA		TRIAL PART NO.		VENDOR		VENDOR NO.		PART NO. 7047-9600 ETC.	
DWG TYPE R		DWG SOURCE NEW		DWG DATE 02/15/02		UNIT mm		SCL 2/1	
APPROVED		CHECKED		DESIGN		DRAWN		DWG NO. 7047-9600:R	
SPECIFIED		Michael Kauth		KITAMURA		MARCELA FLORES		YAZAKI CORPORATION	
DATE 2020/4/23		DATE 02/15/02		DATE 04/21/20		DATE		DATE	

GENERAL TOLERANCE						ANGLE	ECCENT
A	±0.15	±0.2	±0.3	±0.5	±0.75	±30'	0.1
B	±0.2	±0.3	±0.55	±0.95	±1.4	±30'	0.1
C	±0.3	±0.5	±0.8	±1.4	±2	±30'	0.15
SPECIFIED						±0.1	±1.0
						g	MASS

LET	DATE	REVISION RECORD	NO.	CHKD
Δ	04/21/20	REVISED	C20-A306	M.F.
Δ	04/02/20	REVISED	C20-A286	I.K.
Δ	02/15/02	RELEASED	R02-002	M.M.