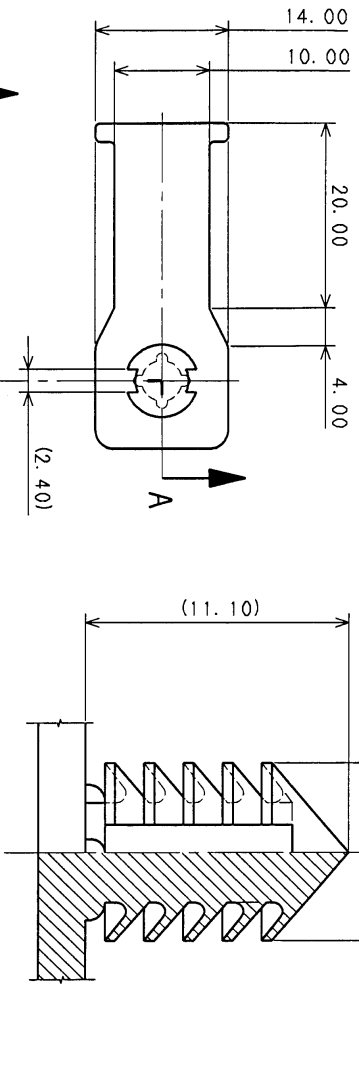
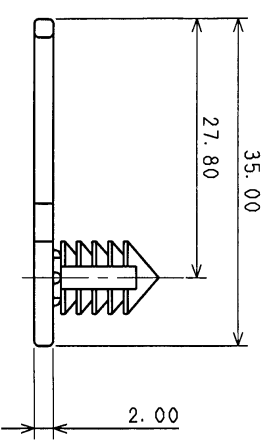


| | | |
|---|--------------------|--------------|
| △ | PART NAME | PART NUMBER |
| | RETAINER - NATURAL | 7047-5344 |
| | RETAINER - BLACK | 7047-5344-30 |



SEC. A-A (5/1)



- NOTES:
- 1) MATING HOLE: ϕ 6.5, t=0.56~5.10
 - 2) RETENTION FORCE: 12.5 kgf (MIN.)
 - 3) APPLICABLE BUNDLE DIA: 10.0 mm (MAX.)
 - 4) MATERIAL: YPES-25-02-091 OR IDEMITSU MOSTLOY H802
 - 5) TO BE USED IN ENVIRONMENTS LESS THAN 100° C ONLY

| | | | | | | | | | | | |
|-------------------|--|-------------------|--|------------------|--|----------------|--|---------------|--|--------------------|--|
| CUSTOMER | | CUSTOMER PART NO. | | CUSTOMER DWG NO. | | MATERIAL SPEC. | | TREAT. & FIN. | | ISSUE MARK | |
| G. K. | | C04-A561 | | C02-B301 | | G. K. | | D. D. | | | |
| D. D. | | YNA | | STDLIB NO. | | D. D. | | D. D. | | | |
| CHKD | | VENDOR NO. | | VENDOR NO. | | DWG TYPE | | DWG SOURCE | | DWG DATE | |
| NEW | | NO. | | NO. | | NEW | | NEW | | 02.12.03 | |
| REVISION RECORD | | NO. | | NO. | | CHECKED | | CHECKED | | DESIGN | |
| GENERAL TOLERANCE | | NO. | | NO. | | CHECKED | | CHECKED | | DRAWN | |
| 10MAX | | 50MAX | | 100MAX | | 250OVR | | ANGLE | | ECCENT | |
| ±0.15 | | ±0.2 | | ±0.3 | | ±0.5 | | ±0.75 | | ±30' | |
| ±0.2 | | ±0.3 | | ±0.55 | | ±1.4 | | ±1.4 | | 0.1 | |
| ±0.3 | | ±0.5 | | ±0.8 | | ±1.4 | | ±2 | | 0.15 | |
| WEIGHT | | 2.0 | | 9 | | APPROVED | | CHECKED | | D. DEMARATOS | |
| 1 | | 2 | | 3 | | 4.12.04 | | 4.12.04 | | 4.12.04 | |
| PART NO. | | 7047-5344, ETC | | △ | | DWG NO. | | 7047-5344:R | | YAZAKI CORPORATION | |

