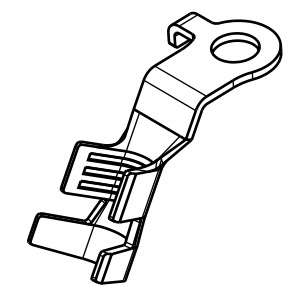
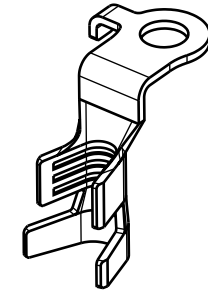
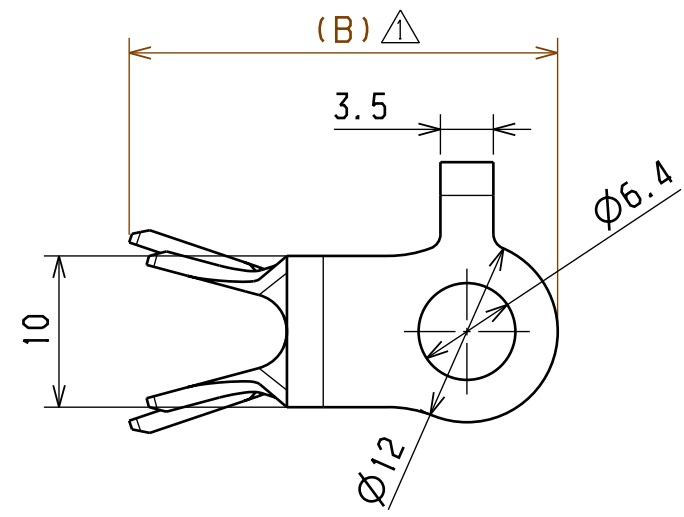
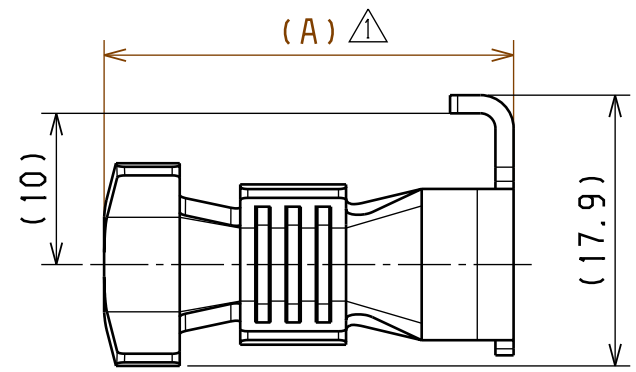


1

2

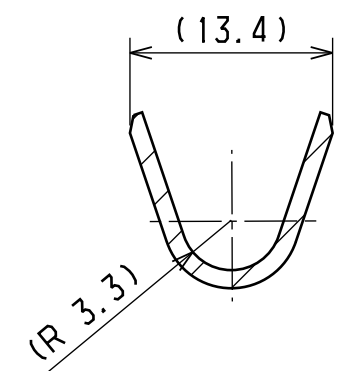
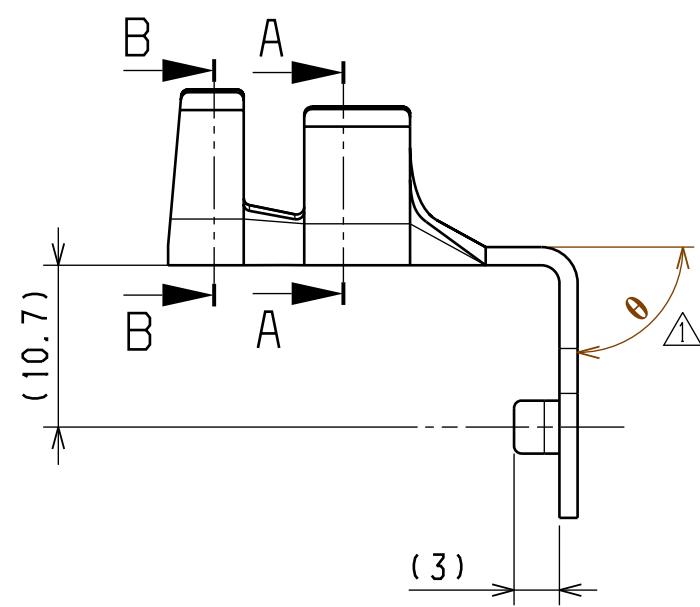
3

| | DESCRIPTION | PART NUMBER | θ | A | B |
|---|----------------|--------------|------|--------|--------|
| 1 | LA TERMINAL 90 | 7009-6113-02 | 90±2 | (27.1) | (28.3) |
| 2 | LA TERMINAL 60 | 7009-6564-02 | 60±2 | (23.6) | (39.1) |

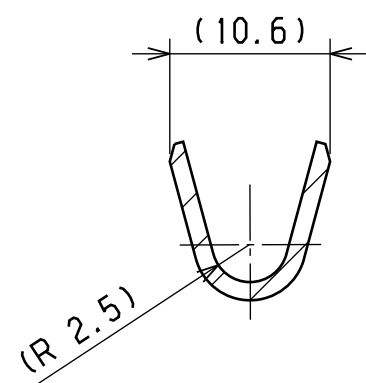


7009-6113-02

△7009-6564-02



SECTION B-B



SECTION A-A

NOTES:

- 1. THICKNESS t=1.2mm.
- 2. APPLICABLE WIRE SIZE: AV 8~15sq, AVX 8~15sq.
- 3. MATERIAL: COPPER ALLOY.
- 4. PLATING: Sn PLATING.
- 5. APPLICABLE BOLT SIZE: M6.

©2018 YAZAKI NORTH AMERICA, INC.
 ALL INFORMATION ON THIS DRAWING IS THE PROPRIETARY AND CONFIDENTIAL PROPERTY OF YNA AND SHALL NOT BE DISCLOSED, DUPLICATED OR DISTRIBUTED WITHOUT THE EXPRESS WRITTEN CONSENT OF YNA. ALL RIGHTS RESERVED.

| |
|------------|
| ISSUE MARK |
|------------|

| | | | | | | | | | | | | | | | | | |
|-------------------|-----------|-----------------------|----------|------------|-------------------|----------|-----------------------------|------------|---------------|-----------|---------------|------------|-----|-----------------------------|------------------------|-------------|-------------|
| △ | 6/29/2020 | ADDED ANGLE TOLERANCE | C20-A425 | E.R. | CUSTOMER | | MATL. SPEC. | NOTE 3 | TREAT. & FIN. | NOTE 4 | | | | | | | |
| △ | 5/21/2018 | ADD PN | C18-A433 | C.M. | CUSTOMER PART NO. | | NAME LA TERMINAL | | | | | | | | | | |
| | 2/12/2016 | NEW | C16-A145 | R.E. | OFFICE YNA-C | | TRIAL PART NO. | | | | | | | | | | |
| LET | DATE | REVISION RECORD | NO. | CHKD | VENDOR | | PART NO. 7009-6113-02, ETC. | | | | | | | | | | |
| GENERAL TOLERANCE | | | | VENDOR NO. | | DWG TYPE | | DWG SOURCE | | DWG DATE | | UNIT | SCL | ANGLE | DWG NO. 7009-6113-02:R | | SET DWG NO. |
| | 10MAX | 50MAX | 100MAX | 250MAX | 250OVR | ANGLE | ECCENT | R | NEW | 2/12/2016 | mm | 2 / 1 | 3 | DWG NO. 7009-6113-02:R | | SET DWG NO. | |
| A | ±0.15 | ±0.2 | ±0.3 | ±0.5 | ±0.75 | ±0.5° | 0.1 | APPROVED | CHECKED | CHECKED | DESIGN | DRAWN | | PART NO. 7009-6113-02, ETC. | | SET DWG NO. | |
| B | ±0.2 | ±0.3 | ±0.55 | ±0.95 | ±1.4 | ±1.0° | 0.1 | | | | JASON BURNETT | E. RUCHKIN | | DWG NO. 7009-6113-02:R | | SET DWG NO. | |
| Ⓢ | ±0.3 | ±0.5 | ±0.8 | ±1.4 | ±2 | ±1.5° | 0.15 | | | | 6/18/2015 | 6/29/2020 | | DWG NO. 7009-6113-02:R | | SET DWG NO. | |
| SPECIFIED | | | | MASS | | 6.1 g | | | | | | | | YAZAKI CORPORATION | | A3 | |

1

2

3

