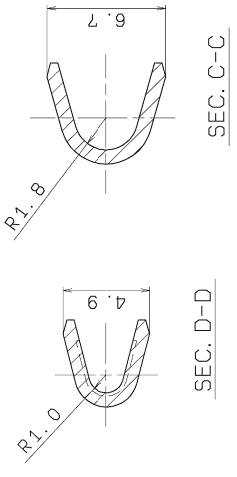
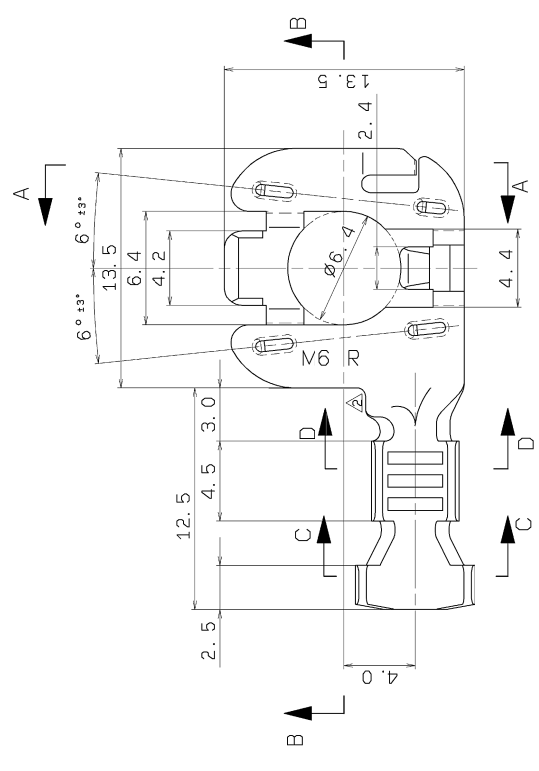
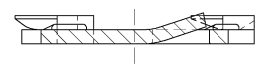


5	YAZAKI PART NO.	REMARK
4	7009-2190-02	メッキ挿(TIN PLATING)
3	7A09-2190-02	メッキ挿(TIN PLATING)



SEC. A-A

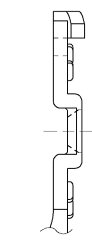


NOTES

- 1) APPLICABLE WIRE SIZE : AVSO.5~ AVS 2
- 2) MATING PART NO. : 7009-1865 ETC., 7009-1867 ETC., 7009-1868 ETC., 7009-1869 ETC., 7009-1862 ETC., 7009-1863 ETC.

注記

- 1) 適用電線サイズ: AVSO.5~AVS2
- 2) 嵌合相手品番: 7009-1865 ETC., 7009-1867 ETC., 7009-1868 ETC., 7009-1869 ETC., 7009-1862 ETC., 7009-1863 ETC.



SEC. B-B

ISSUE MARK

CUSTOMER PART NO.	CUSTOMER DWG NO.	MATL. BRASS	t=0.8	TREAT. & FIN.
OFFICE	TRIAL PART NO.	NAME M6 EARTH TERMINAL (R)		

GENERAL TOLERANCE		ECCENT		ANGLE		SCL		ANGLE	
10MAX	50MAX	100MAX	250MAX	2500VR	±30'	±30'	5/1	3	7009-2190-02
A	±0.15	±0.2	±0.3	±0.5	±0.75	±1.4	5/1	3	7009-2190-02
B	±0.2	±0.3	±0.55	±0.95	±1.4	±30'	5/1	3	7009-2190-02
C	±0.3	±0.5	±0.8	±1.4	±2	±30'	5/1	3	7009-2190-02
SPECIFIED		MASS		2		g		99.06.28	
								14.01.23	

14.01.23	CHANGED FORM & RENEW	C14-3149	G. S
01.08.01	ADDED PART NO.	C01-3570	Y. K
00.03.15	NEW	C00-3475	J. L
LET DATE	REVISION RECORD	NO.	CHKD